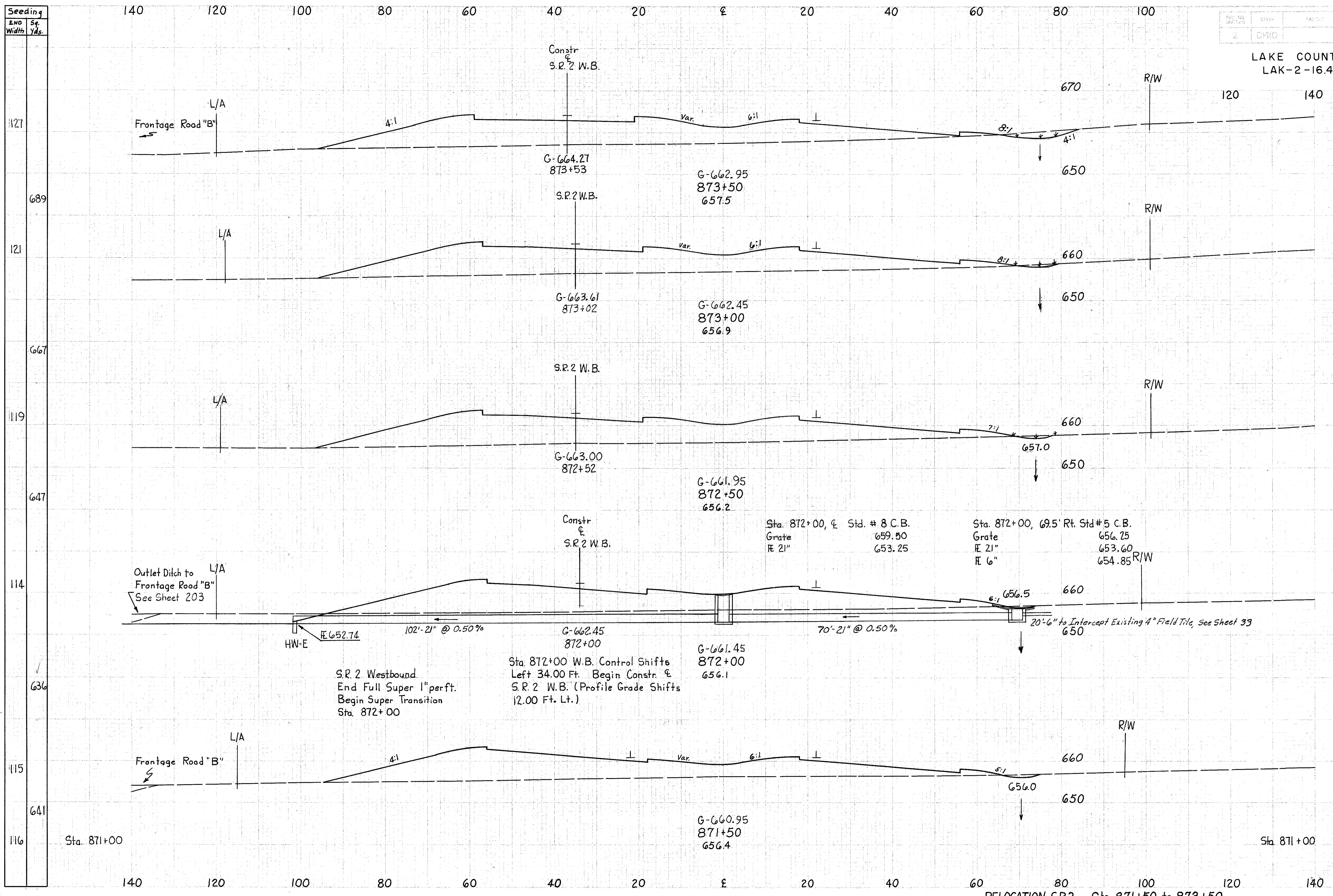


LAKE COUNTY
LAK-2-16.49



END STA	AREA	VOLUME	
		CUT	FILL
127	20	693	
689			21
121	3	725	
667			6
119	4	743	
647			6
114	2	685	
636			7
115	6	641	
641			13
116	8	671	

RELOCATION S.R. 2 Sta. 871+50 to 873+50

2/1/83
102'-21" @ 0.50%
70'-21" @ 0.50%

S.R. 2 Westbound
End Full Super 1" per ft.
Begin Super Transition
Sta. 872+00

Sta. 872+00 W.B. Control Shifts
Left 34.00 Ft. Begin Constr. &
S.R. 2 W.B. (Profile Grade Shifts
12.00 Ft. Lt.)

Sta. 872+00, &	Std. # 8 C.B.	Sta. 872+00, 69.5' Rt. Std # 5 C.B.	
Grate	659.50	Grate	656.25
℄ 21"	653.25	℄ 21"	653.60
		℄ 6"	654.85

Outlet Ditch to
Frontage Road "B"
See Sheet 203

20'-6" to Intercept Existing 4" Field Tile, See Sheet 33