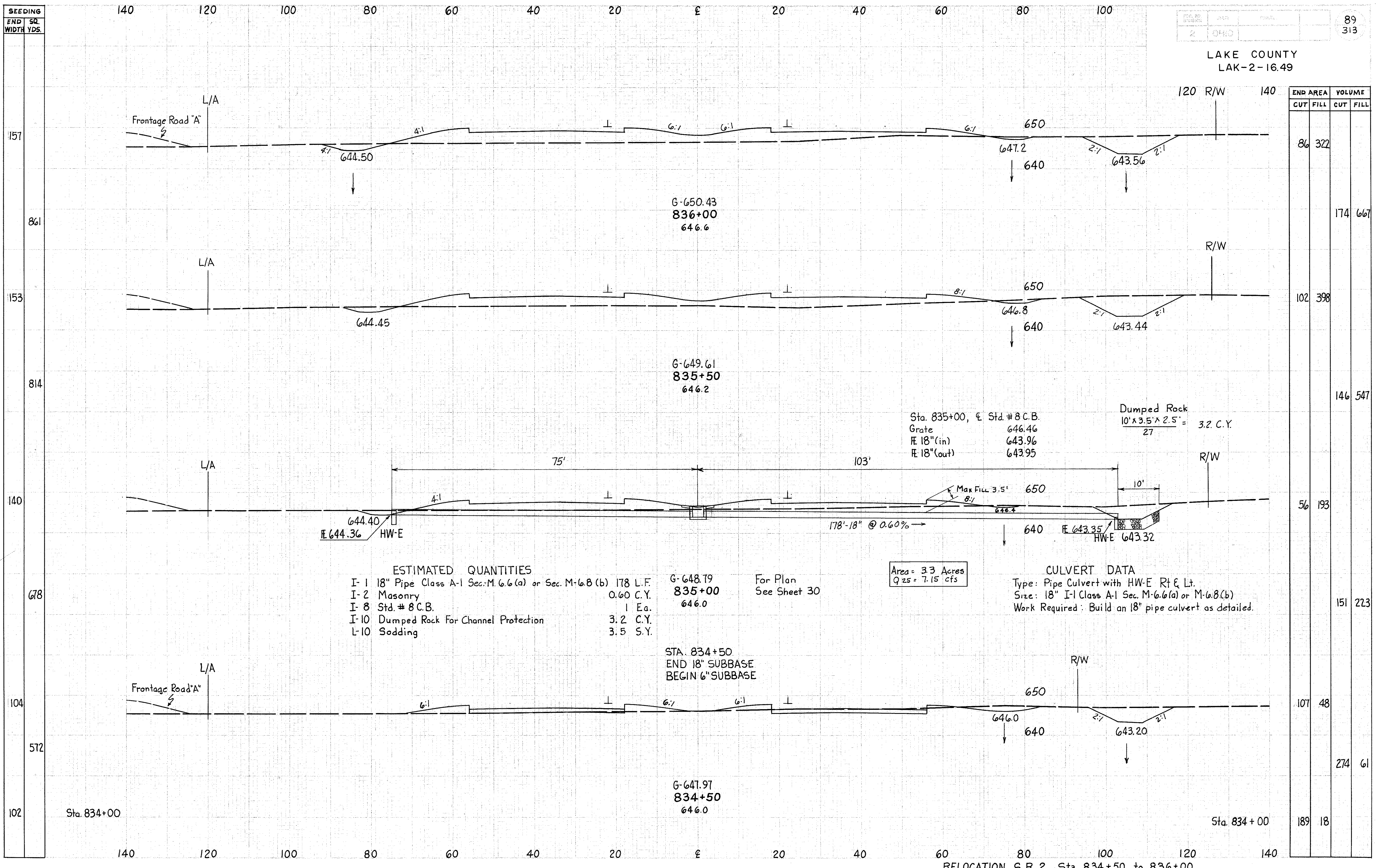


SEEDING
END SQ.
WIDTH YDS.

LAKE COUNTY
LAK-2-16.49



END STA.	END AREA		VOLUME	
	CUT	FILL	CUT	FILL
834+00	189	18		
834+50	107	48	274	61
835+00	56	193	146	547
835+50	102	398	174	667
836+00	86	322		

ESTIMATED QUANTITIES

I-1 18" Pipe Class A-1 Sec. M-6.6(a) or Sec. M-6.8(b)	178 L.F.
I-2 Masonry	0.60 C.Y.
I-8 Std. # 8 C.B.	1 Ea.
I-10 Dumped Rock For Channel Protection	3.2 C.Y.
L-10 Sodding	3.5 S.Y.

Area = 3.3 Acres
Q 25 = 7.15 cfs

CULVERT DATA
Type: Pipe Culvert with HW-E Rt & Lt.
Size: 18" I-1 Class A-1 Sec. M-6.6(a) or M-6.8(b)
Work Required: Build an 18" pipe culvert as detailed.

Sta. 835+00, E Std. # 8 C.B.
Grate E 646.46
E 18"(in) 643.96
E 18"(out) 643.95

Dumped Rock
10' x 3.5' x 2.5' = 3.2 C.Y.

STA. 834+50
END 18" SUBBASE
BEGIN 6" SUBBASE

G-650.43
836+00
646.6

G-649.61
835+50
646.2

G-648.79
835+00
646.0

G-647.97
834+50
646.0

Handwritten notes in the bottom left corner.