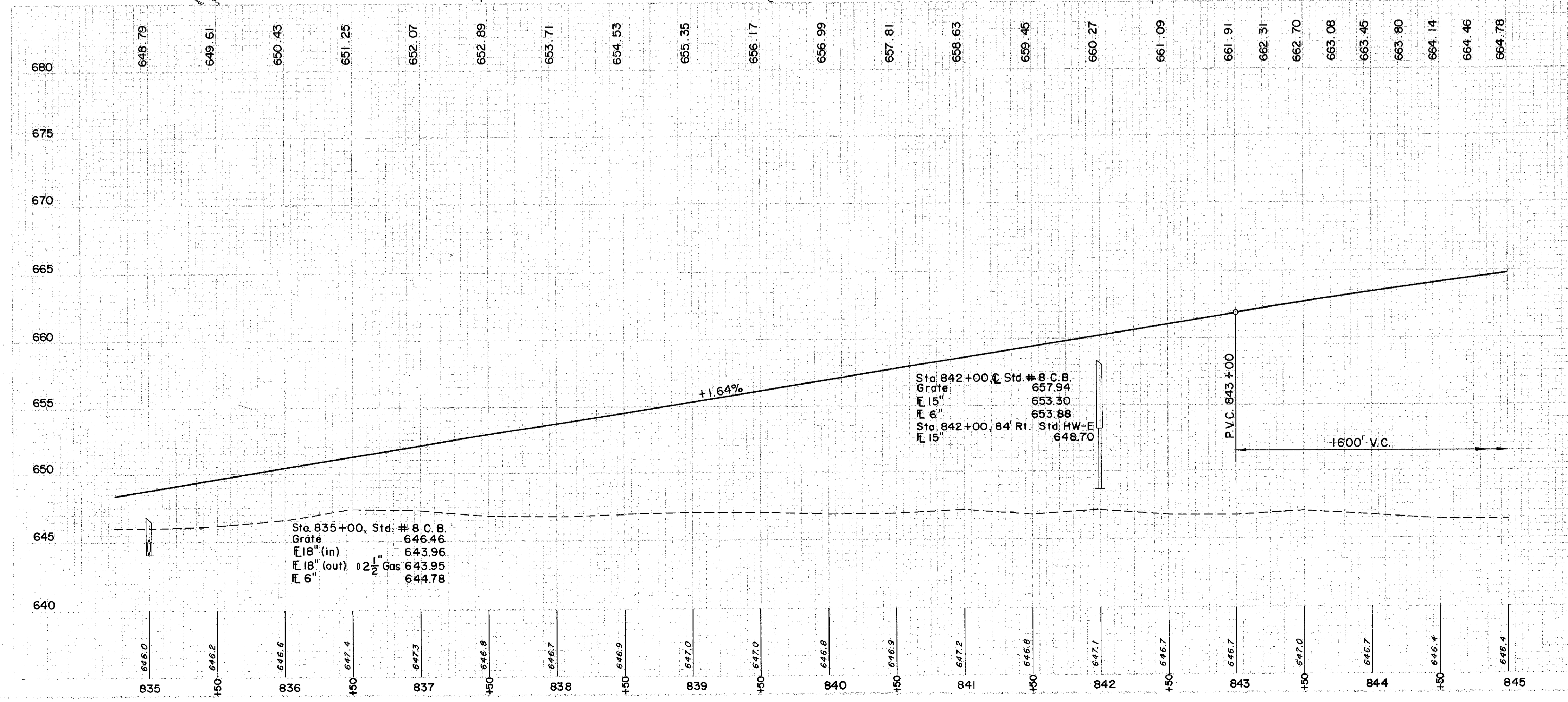
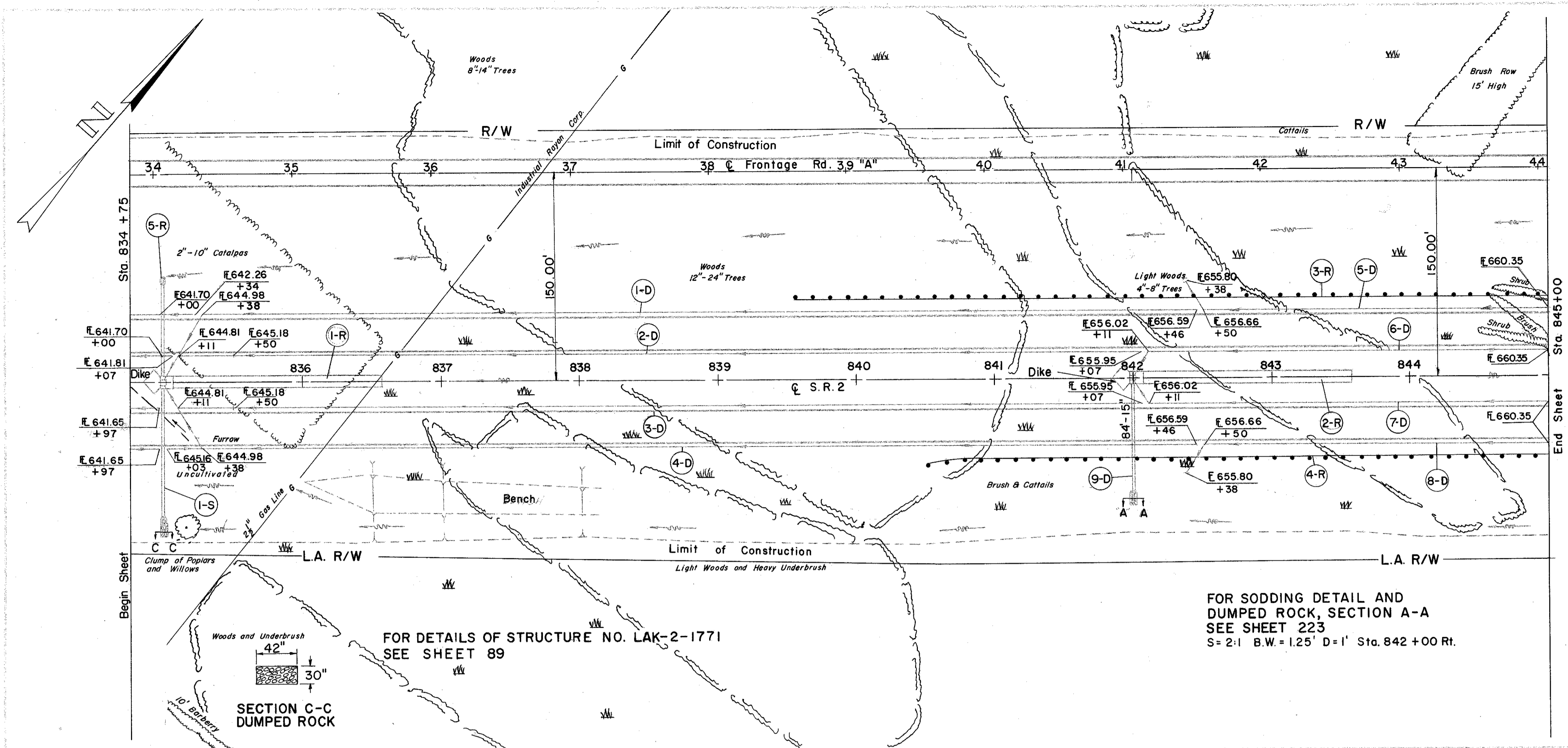


FRONTAGE ROAD "A"  
FOR PAVEMENT QUANTITIES  
SEE SHEET 176  
FOR PROFILE  
SEE SHEET 187

LAKE COUNTY  
LAK-2-16.49

2 1/2" Gas Line to be Relocated  
by Others.



(D) DRAINAGE

REF. NO.	STATION	PIPE CLASS		PIPE CLASS	PIPE CLASS	I-2	I-5	I-8	I-10			
		J-1	J-1							I-1	I-3	
I-D	835+38	842+46	LI	44	708							
2-D	835+11	842+07	LI	44	696							
3-D	835+11	842+07	Rt.	44	743							
4-D	835+03	842+46	Rt.	44	264							
5-D	842+50	845+00	LI	10	299							
6-D	842+11	845+00	LI	10	299							
7-D	842+11	845+00	Rt.	10	264							
8-D	842+50	845+00	Rt.	10	264							
9-D	842+50	845+00	Rt.	10	264							
TOTAL				88	84	40	20	3969	0.26	0.26	2.3	2.3

(R) ROADWAY

REF. NO.	STATION	PIPE CLASS		PIPE CLASS	PIPE CLASS	I-15	L-10	L-10
		J-1	J-1					
I-R	835+07	836+57	LI	44	125			
2-R	842+07	843+57	LI	44	125			
3-R	839+55	851+55	LI	1,200.0				
4-R	840+52	850+52	Rt.	1,000.0				
5-R	Structure				2,200.0	250	3.5	3.5
TOTAL								

(S) STRUCTURE

REF. NO.	STATION	FROM	TO	TOTAL	I-1	I-2	I-8	I-10
J-S	1835+00	-	-	178	0.60	0.60	1	3.2
TOTAL								

FRONTAGE ROAD "A"

EXCAVATION	=	0 C.Y.
EMBANKMENT	=	3,967 C.Y.
EMBANKMENT +20%	=	4,760 C.Y.

EXCAVATION	=	1,970 C.Y.
EMBANKMENT	=	50,708 C.Y.
EMBANKMENT +20%	=	60,850 C.Y.

STA. 835 +00 TO STA. 845 +00