

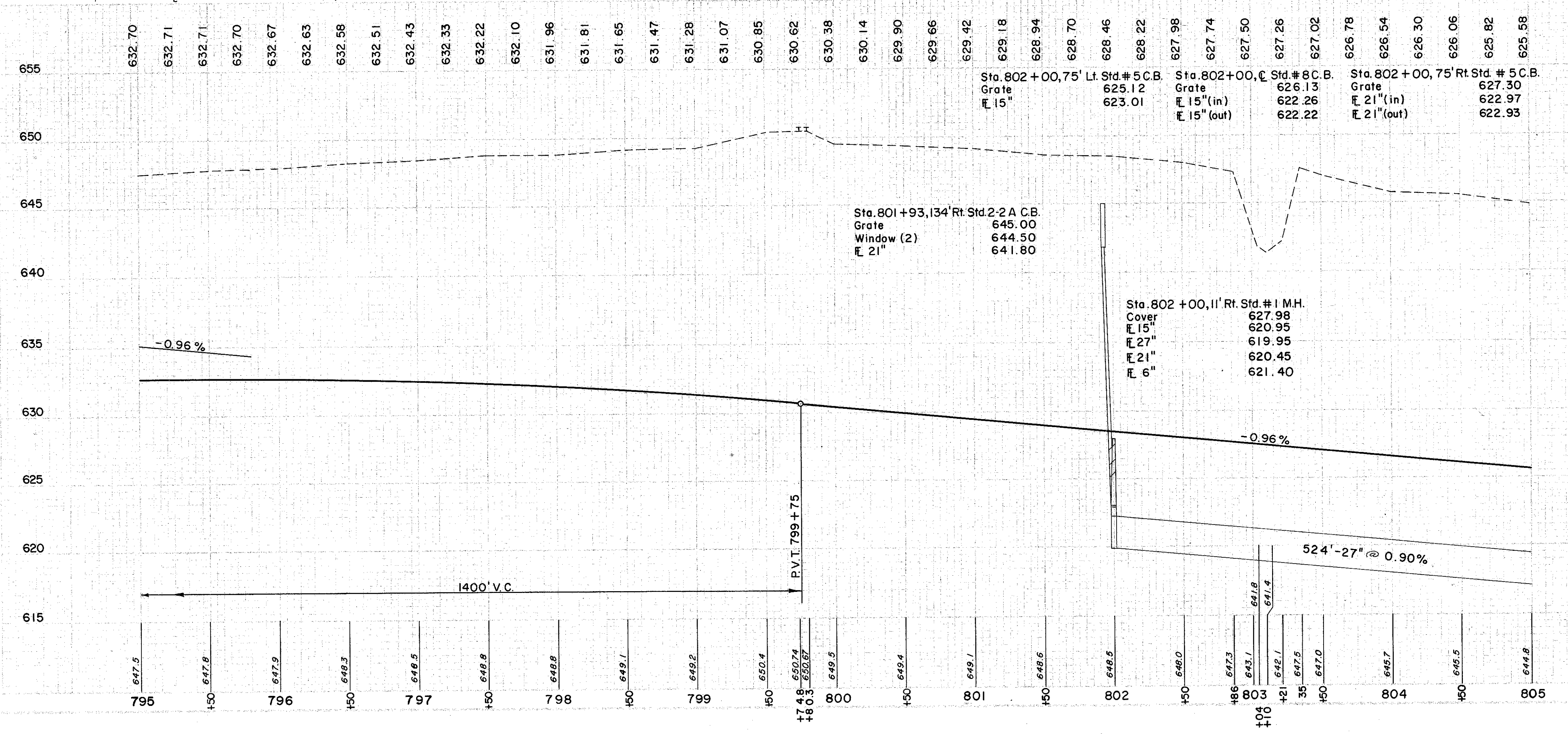
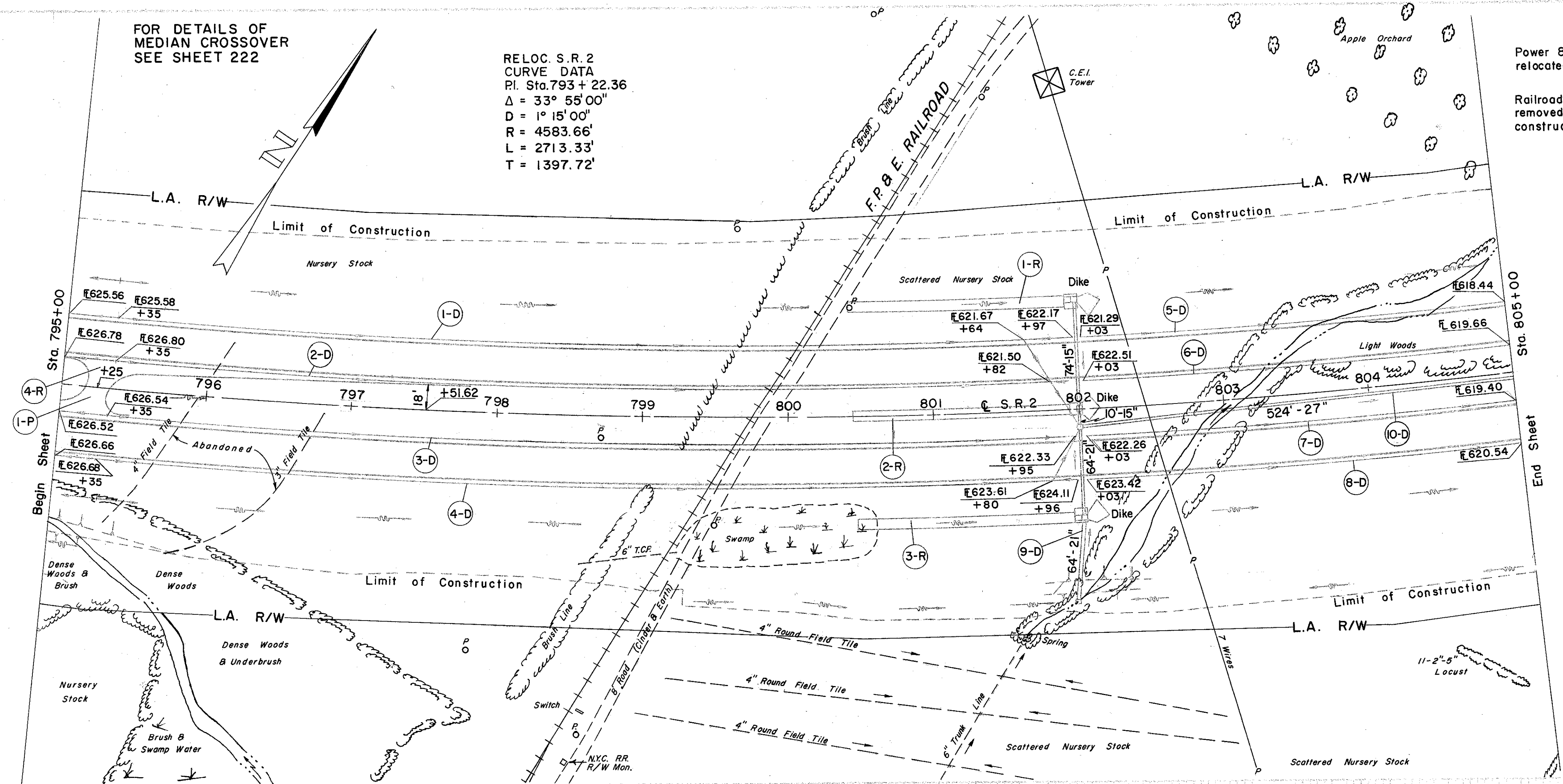
FOR DETAILS OF  
MEDIAN CROSSOVER  
SEE SHEET 222

RELOC. S.R. 2  
CURVE DATA  
P.I. Sta. 793 + 22.36  
 $\Delta = 33^\circ 55' 00''$   
 $D = 1^\circ 15' 00''$   
 $R = 4583.66'$   
 $L = 2713.33'$   
 $T = 1397.72'$

Power & Telephone Lines  
relocated by Others.

Railroad Tracks & Ties to be  
removed prior to or during  
construction by Others.

LAKE COUNTY  
LAK-2-16.49



(D) DRAINAGE

REF. NO.	STATION	S I D E		PIPE CLASS J-I		PIPE CLASS		I-5		I-8		STD. #1 M.H.
		FROM	TO	SEC. 6(6b)	OR SEC. 11(6(8b))	CLASS	DEEP	CLASS	BEND	STD. #8 C.B.	STD. #5 C.B.	
1-D	795+00	801+97	Lt.	6"	21"	6"	21"	1	EA			
2-D	795+00	801+97	Lt.	6"	10	6"	10	2				
3-D	795+00	801+95	Rt.	6"	10	6"	10	1				
4-D	795+00	801+95	Rt.	6"	10	6"	10	1				
5-D	802+03	807+32	Lt.	6"	10	6"	10	2				
6-D	802+03	807+26	Lt.	6"	10	6"	10	1				
7-D	802+03	808+66	Rt.	6"	10	6"	10	1				
8-D	802+03	808+45	Rt.	6"	10	6"	10	2				
9-D	801+93	802+00	Lt.-Rt.	6"	64	6"	64	1				
10-D	802+00	807+25	-	6"	64	6"	64	1				
TOTAL				190	74	64	10	524	40	64	5145	2

(R) ROADWAY

REF. NO.	STATION	S I D E		TOTAL
		FROM	TO	
1-R	800+43	801+93	Lt.	125
2-R	800+43	801+93	Rt.	125
3-R	800+43	801+93	Rt.	125
4-R	795+25	801+93	☺	290
TOTAL				290

(P) PAVEMENT

REF. NO.	STATION	S I D E		TOTAL
		FROM	TO	
B-21	795+25	801+93	☺	24
B-112	795+25	801+93	☺	24
I-22	795+25	801+93	☺	61
I-22	795+25	801+93	☺	57
T-31	795+25	801+93	☺	72
TOTAL				57

EXCAVATION 140,819 C.Y.  
EMBANKMENT 15 C.Y.  
EMBANKMENT #20 18 C.Y.