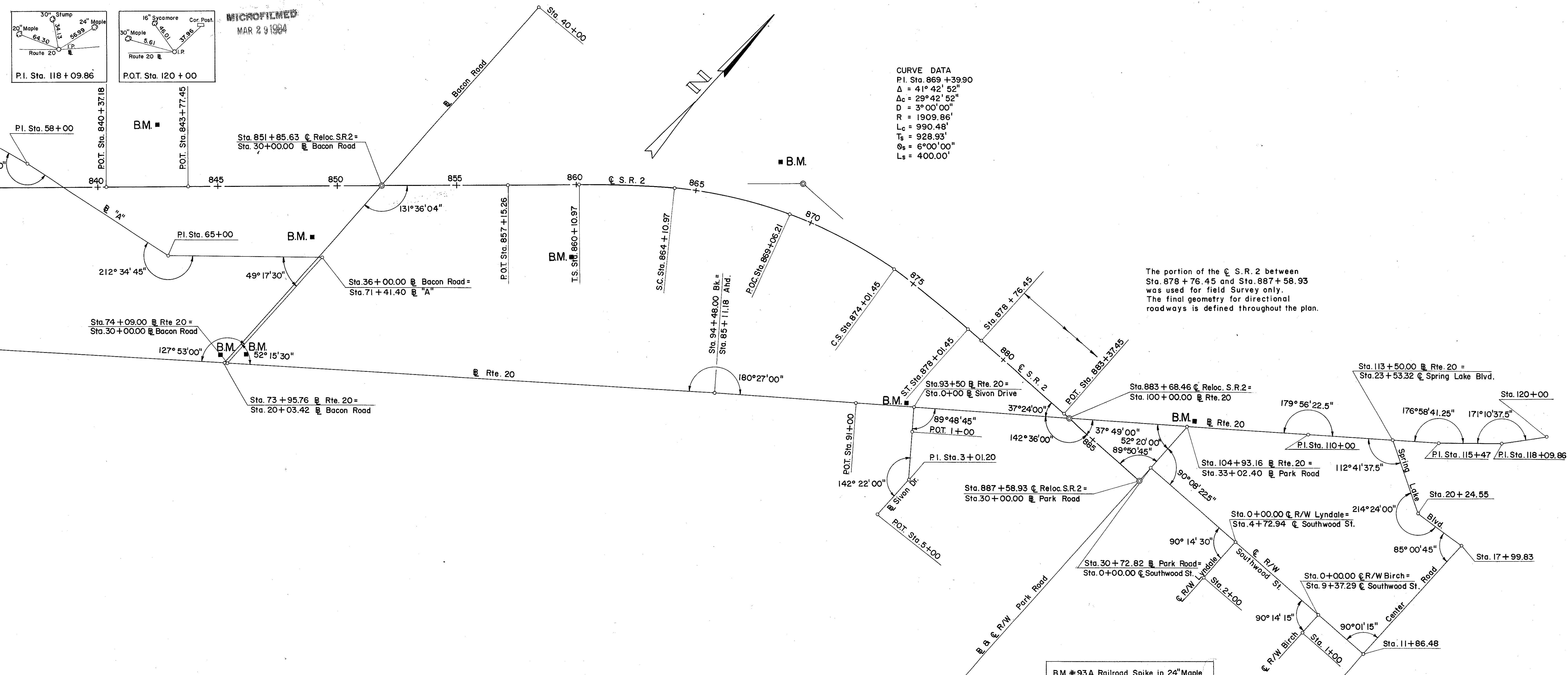
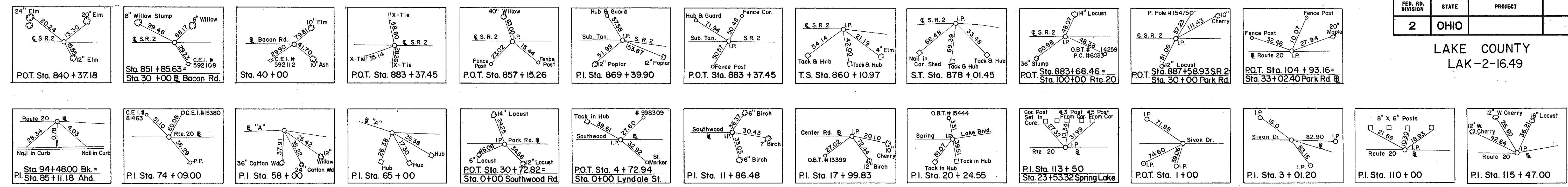


LAKE COUNTY  
LAK-2-16.49



The portion of the S.R. 2 between Sta. 878 + 76.45 and Sta. 887 + 58.93 was used for field survey only. The final geometry for directional roadways is defined throughout the plan.

- B.M. #88A Railroad Spike in Triple 6" Maple 253' Lt. of Sta. 842 + 50 Elev. 647.990
- B.M. #89A Railroad Spike in Twin 8" Poplar 214' Rt. of Sta. 849 + 00 Elev. 651.635
- B.M. #85 N.W. Corner Concrete Base of Traffic Light Pole at Intersection of U.S. Rte. 20 & Bow Hall Road Elev. 677.405
- B.M. #86 Lag Bolt in PP # 31463 at N.E. Corner of U.S. Rte. 20 and Bacon Road Elev. 674.465
- B.M. #90A Railroad Spike in 18" Poplar 300' Rt. of Sta. 859 + 80 Elev. 656.730
- B.M. #91A Railroad Spike in Root 16" Poplar 190' Lt. of Sta. 868 + 10 Elev. 646.985
- B.M. #92A Railroad Spike in 18" Maple 10' Lt. of Sta. 93 + 17 N. Side U.S. Rte. 20 Adj. to Sivan Drive Elev. 690.930

PLAN OF SURVEY BASE LINES, BENCH MARKS, & REFERENCES