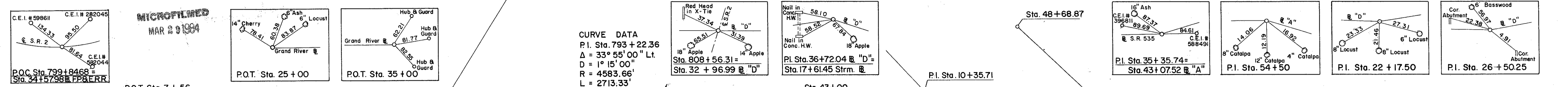
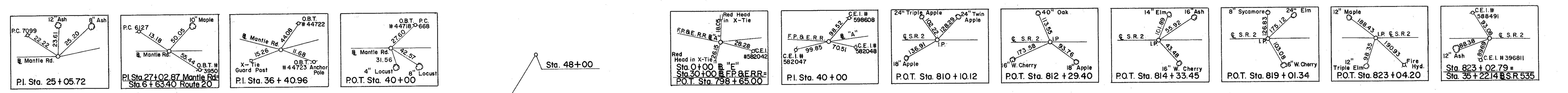
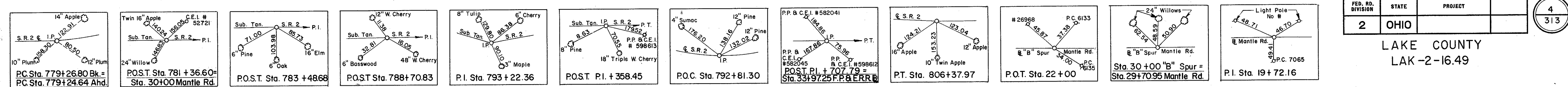
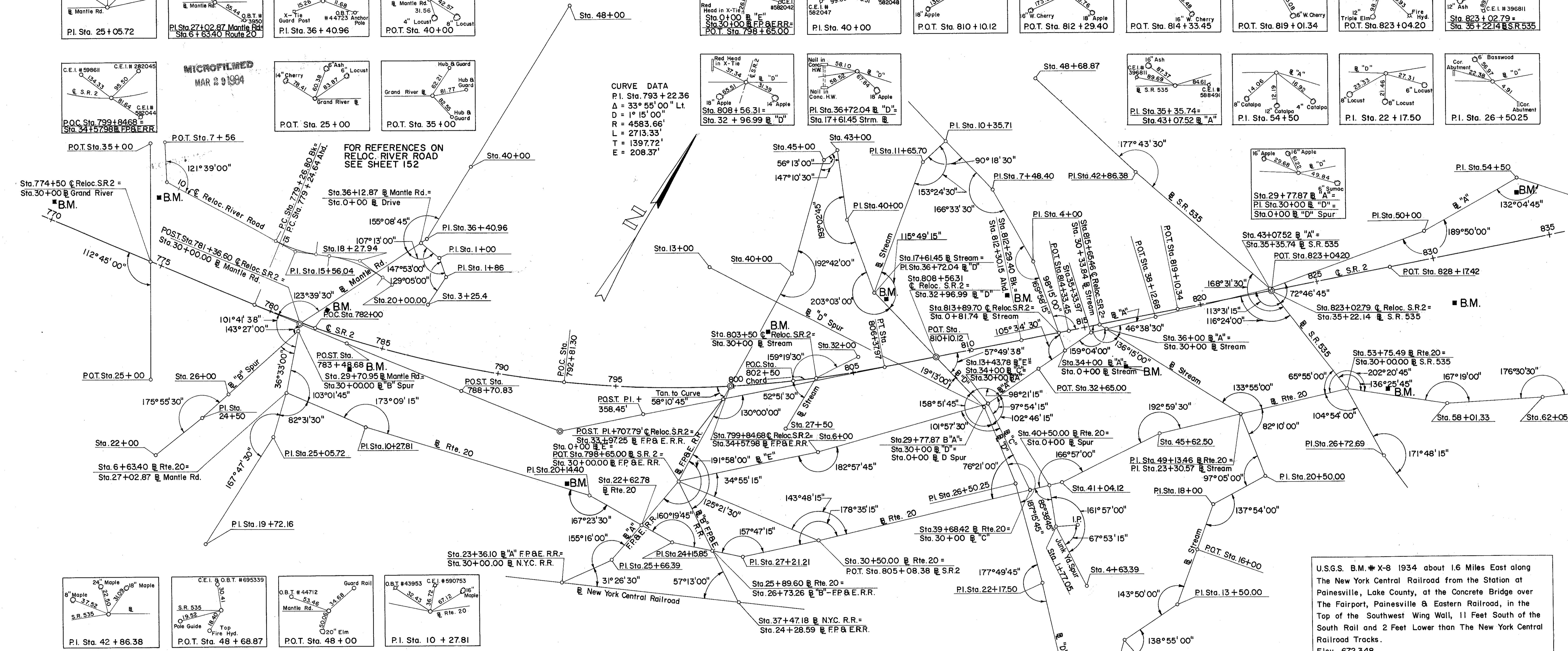


LAKE COUNTY
LAK-2-16.49



CURVE DATA
 P.I. Sta. 793 + 22.36
 $\Delta = 33^\circ 55' 00''$ Lt.
 $D = 1^\circ 15' 00''$
 $R = 4583.66'$
 $L = 2713.33'$
 $T = 1397.72'$
 $E = 208.37'$

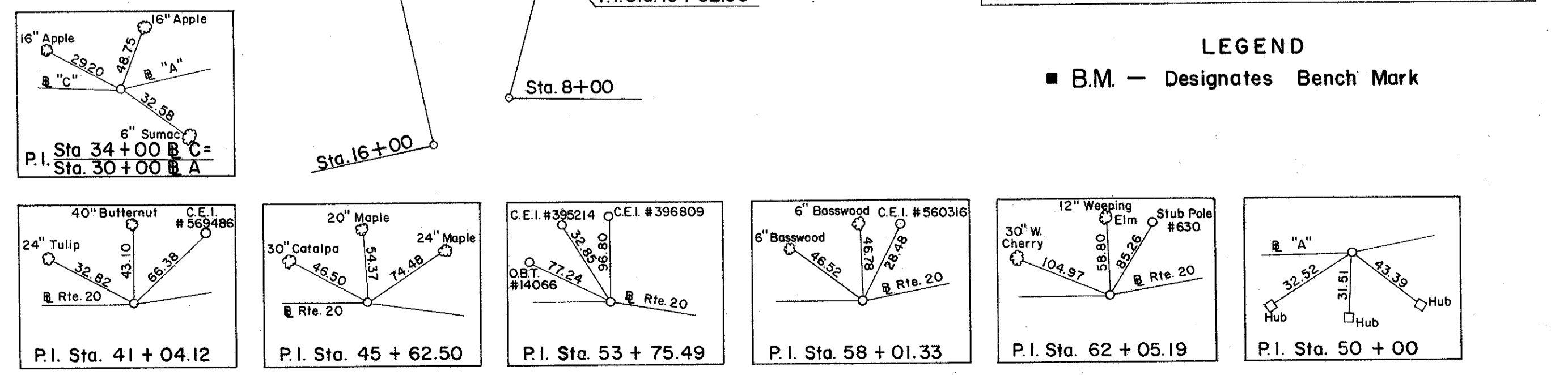
FOR REFERENCES ON
RELOC. RIVER ROAD
SEE SHEET 152



U.S.G.S. B.M. # X-8 1934 about 1.6 Miles East along
The New York Central Railroad from the Station at
Painesville, Lake County, at the Concrete Bridge over
The Fairport, Painesville & Eastern Railroad, in the
Top of the Southwest Wing Wall, 11 Feet South of the
South Rail and 2 Feet Lower than The New York Central
Railroad Tracks.
Elev. 672.348

LEGEND
 ■ B.M. - Designates Bench Mark

- B.M. #77 Lag Bolt in 30" Elm
24" from Base ± 76' Lt. Sta. 769+74
Elev. 588.010
- B.M. #80 Lag Bolt in 8" Wild Cherry
126' Rt. of Sta. 783 + 84
Elev. 648.524
- B.M. #83 A S.W. Corner Headwall on
East Side of F.P.&E. R.R.
280' Lt. of Sta. 807 + 07
Elev. 639.810
- B.M. #84 Iron Pin in Conc. (Prop Cor.)
N.E. Corner of Intersection S.R.535 &
U.S. Rte. 20, 26' Lt. of Sta. 55+50
on U.S. Rte. 20
Elev. 655.560
- B.M. #78 Lag Bolt in Root 24" Poplar
267' Lt. of Sta. 773 + 87
Elev. 587.690
- B.M. #81 Lag Bolt in 36" Triple Locust
429' Rt. of Sta. 793 + 20
North Side U.S. Rte. 20
Elev. 653.098
- B.M. #84 A Railroad Spike in North
East Side 8" Sycamore
200' Rt. of Sta. 830 + 50
Elev. 648.665
- B.M. #79 Lag Bolt in Root 30" W. Cherry
83' Lt. of Sta. 782 + 32
North Side Mantle Road
Elev. 605.884
- B.M. #82 A Top 1" Bolt 1.4' above
Ground on C.E.I. Tower South Corner
215' Lt. of Sta. 801 + 87
Elev. 650.758
- B.M. #85 A Railroad Spike in North
Side of 18" Walnut
199' Rt. of Sta. 816 + 38
Elev. 614.919
- B.M. #87 A Railroad Spike in 8" Catalpa
200' Lt. of Sta. 834 + 00
Elev. 646.125



PLAN OF SURVEY. BASE LINES, BENCH MARKS, & REFERENCES