

SCHEMATIC LAYOUT PLAN

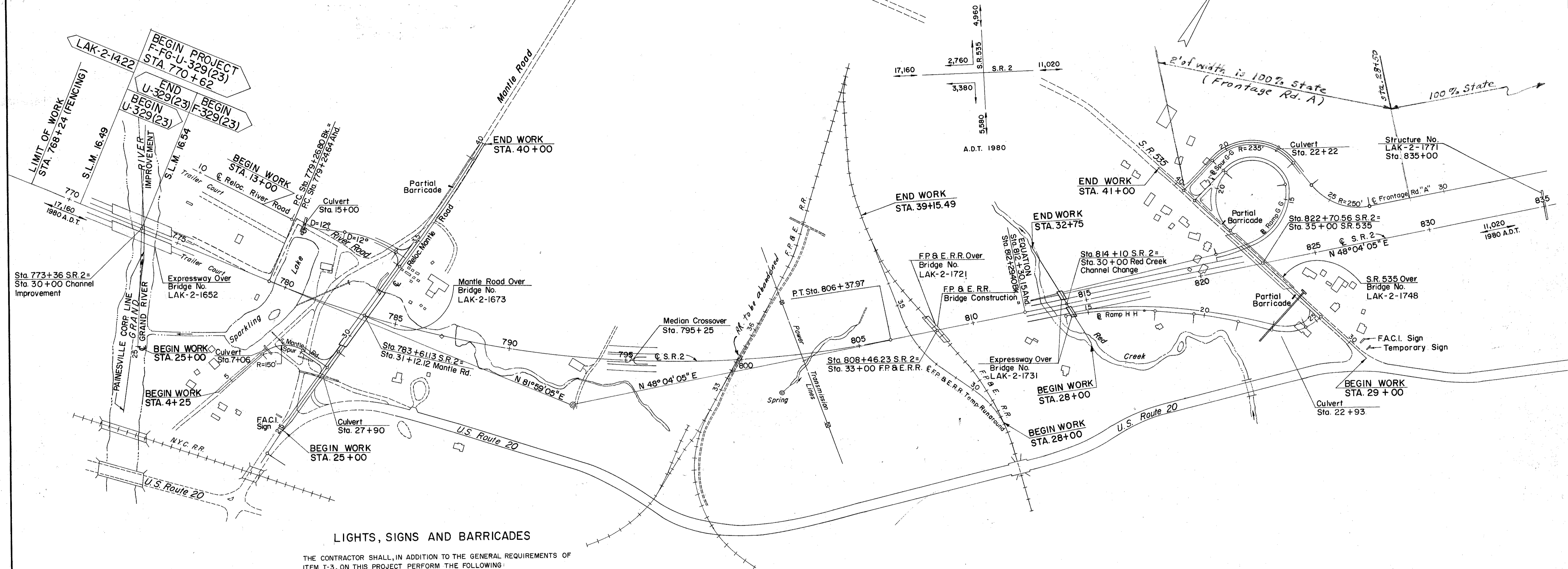
FED. RD. DIVISION	STATE	PROJECT
2	OHIO	

LAKE COUNTY
LAK-2-16.49

NOTE: The Typical Section of adjoining section is the same as the Typical Section for this project except the underdrain is 2'-0" from pavement edge, I-18 & I-22 is 3" beyond paved shoulder and median rounding is 4'-0". Transition from adjoining section to Proposed Typical Section in 25 ft.

S.R.2
CURVE DATA
P.I. Sta. 793 + 22.36
 $\Delta = 33^\circ 55' 00''$ Lt.
D = 1' 15" 00"
R = 4583.66'
T = 1397.72'
L = 2713.33'
E = 208.37'

MICROFILMED
MAR 29 1984



LIGHTS, SIGNS AND BARRICADES

THE CONTRACTOR SHALL, IN ADDITION TO THE GENERAL REQUIREMENTS OF ITEM I-3, ON THIS PROJECT PERFORM THE FOLLOWING:

PROVIDE, ERECT, AND MAINTAIN STANDARD 40" x 24" SIZE "ROAD CLOSED" SIGNS, SIGN SUPPORTS, AND LIGHTS AT THE FOLLOWING LOCATIONS DURING PERIODS IN WHICH THE AFFECTED ROADS ARE CLOSED TO TRAFFIC:

1. S.R. 535 AT INTERSECTION WITH U.S. ROUTE 20
2. MANTLE RD. AT INTERSECTION WITH S.R. 535
3. S.R. 535 AT INTERSECTION WITH MANTLE RD.
4. BACON RD. AT INTERSECTION WITH LAKE RD.
5. BACON RD. AT INTERSECTION WITH U.S. ROUTE 20
6. U.S. ROUTE 20 AT INTERSECTION WITH SIVON DRIVE
7. PARK RD. AT INTERSECTION WITH HALE RD.
8. SPRING LAKE BLVD. AT INTERSECTION WITH CENTER RD.
9. SPRING LAKE BLVD. JUST SOUTH OF U.S. ROUTE 20
10. U.S. ROUTE 20 BEYOND TERMINUS AT STA. 120 + 50

SIGN SUPPORTS AND LIGHTS FOR "ROAD CLOSED" SIGNS SHALL BE AS DETAILED IN THE "OHIO MANUAL OF UNIFORM TRAFFIC CONTROL DEVICES."

PAYMENT FOR PROVIDING, ERECTING, MAINTAINING, AND REMOVING LIGHTS, SIGNS, AND SIGN SUPPORTS SHALL BE INCLUDED IN THE LUMP SUM PRICE BID FOR "MAINTAINING TRAFFIC."

