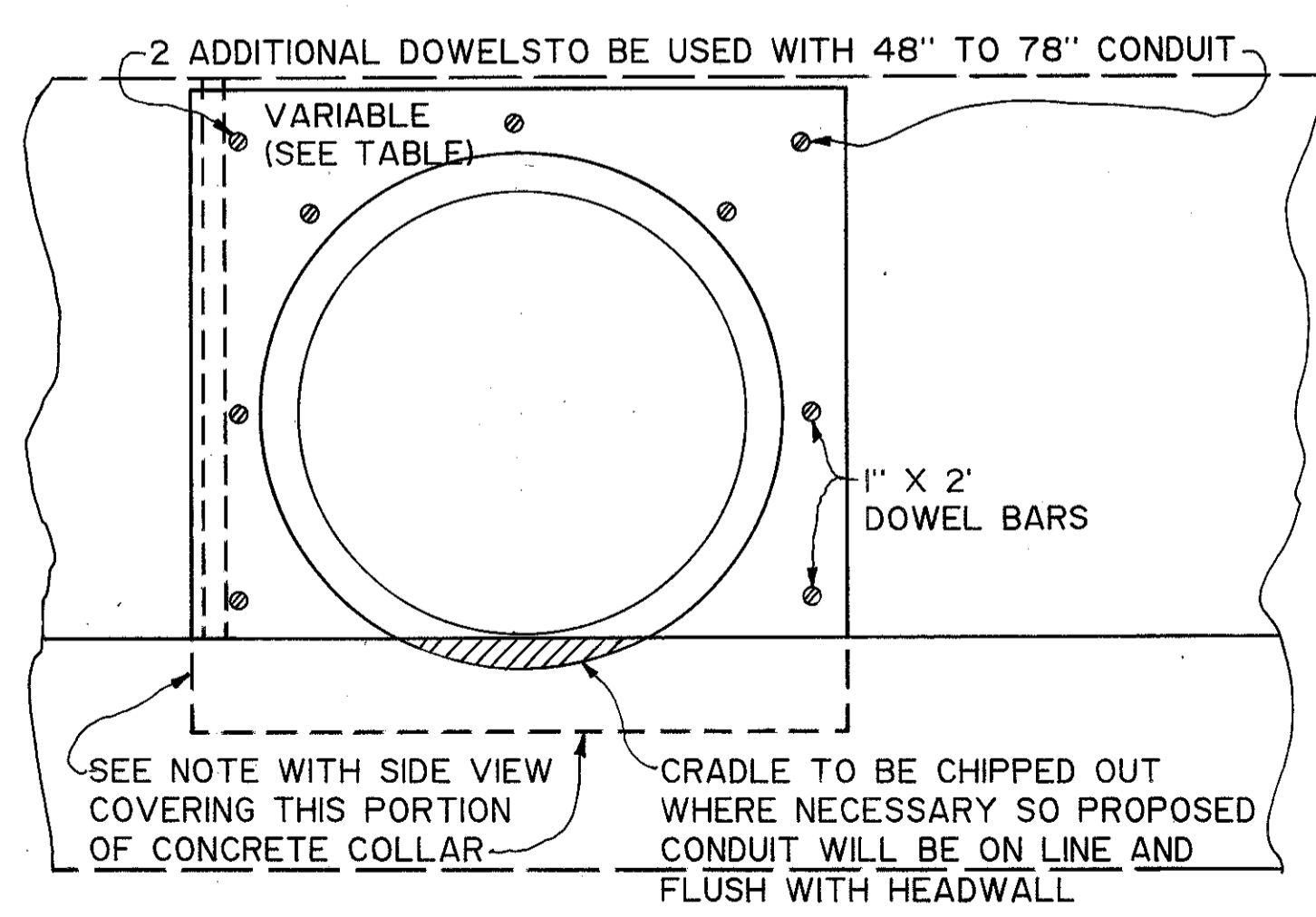


COST PART. CODE	STATION		SIDE	601		602		603		660	
	TO	FROM		ROCK CHANNEL PROT., TYPE C WITH FILTER	CONCRETE MASONRY AS PER PLAN	48" CONDUIT, TYPE A 706.02	15" CONDUIT, TYPE C 706.01 or 706.02		SODDING		
				CU. YD.	CU. YD.	LIN. FT.	LIN. FT.		SQ. YD.		
I	730+75	-	LT		0.35		12				
I	731+00	-	LT	9	1.65	16					
I	728+50	731+00	LT						122		
TOTALS:				9	2.00	16	12		122		

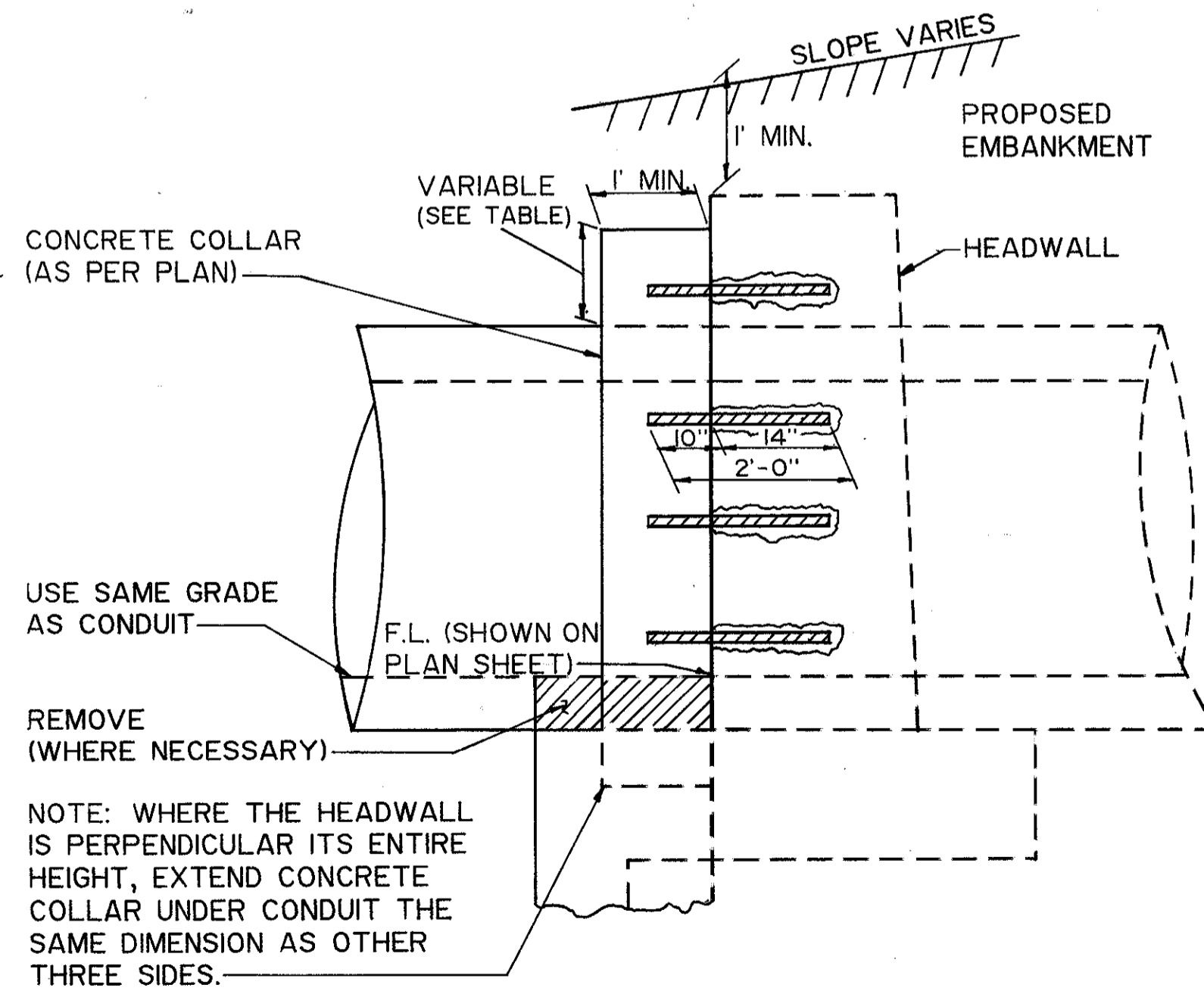
NOTE:
THE COST OF REMOVING PORTIONS OF HEADWALLS TO CRADLE PROPOSED CONDUITS, DRILLING AND SETTING DOWELS, AND CONSTRUCTING CONCRETE COLLARS (USING CLASS "C" CONCRETE) IS TO BE INCLUDED IN ITEM 602 CONCRETE MASONRY AS PER PLAN. THE DOWEL HOLES SHALL BE AS PER CMS 510 AND THE DOWEL BARS SHALL MEET CMS 451.02.

EDGE DISTANCE	PIPE SIZE
6" MIN.	30" CONDUIT
	36" "
	42" "
8" MIN.	48" "
	54" "
	60" "

NOTE:
AS AN ALTERNATE TO THE DOWELLED CONCRETE COLLAR DETAIL FOR CULVERTS 24" IN DIAMETER OR LESS, THE HEADWALL AND THE LAST SECTION OF THE CONDUIT MAY BE REMOVED AND REPLACED WITH AN ADDITIONAL SECTION OF NEW CONDUIT AT NO ADDITIONAL COST TO THE STATE. IF THE ALTERNATE METHOD IS USED, THE COST OF REMOVING THE WALL AND CONDUIT AND REPLACING THE LENGTH OF CONDUIT REMOVED SHALL BE INCLUDED IN THE UNIT PRICE BID FOR THE PROPOSED CONDUIT EXTENSION, MEASURED FROM THE FACE OF THE WALL.



END VIEW



SIDE VIEW

CONCRETE COLLAR DETAIL

SEE CROSS-SECTION SHEETS 59 FOR SEWER PROFILES

NOTE: FENCE SHALL BE RELOCATED AS SHOWN TO MEET WITH THE PROPOSED HEADWALL.

