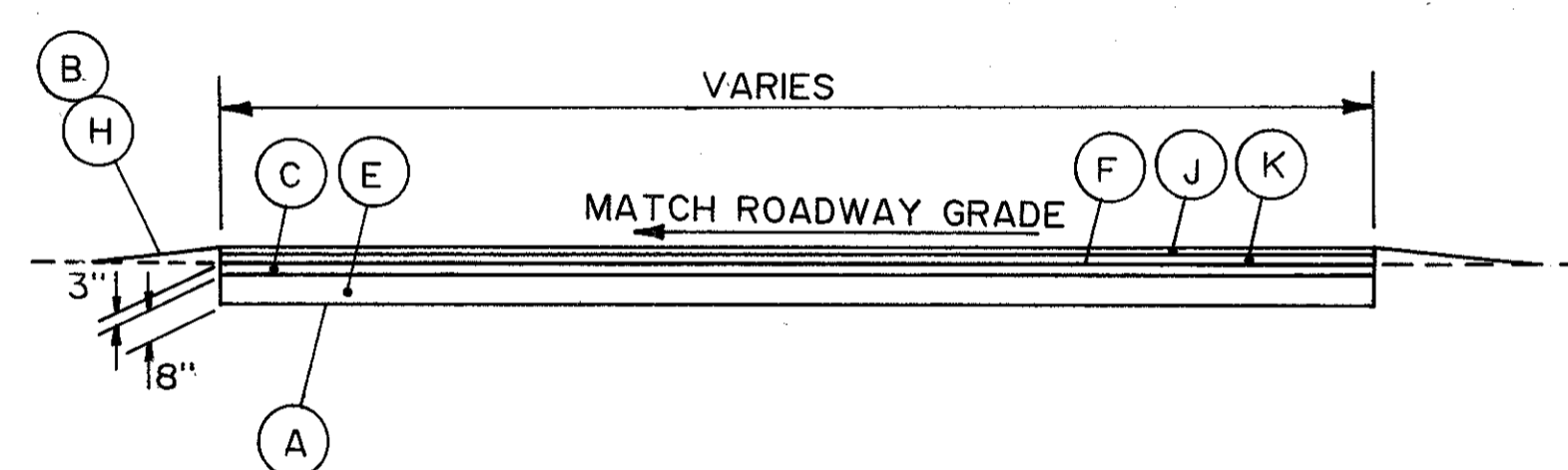
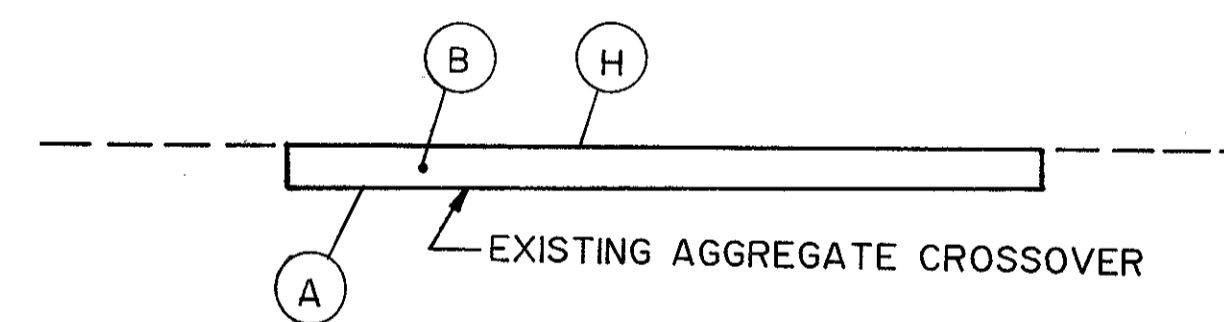


**TYPICAL CROSSOVER**



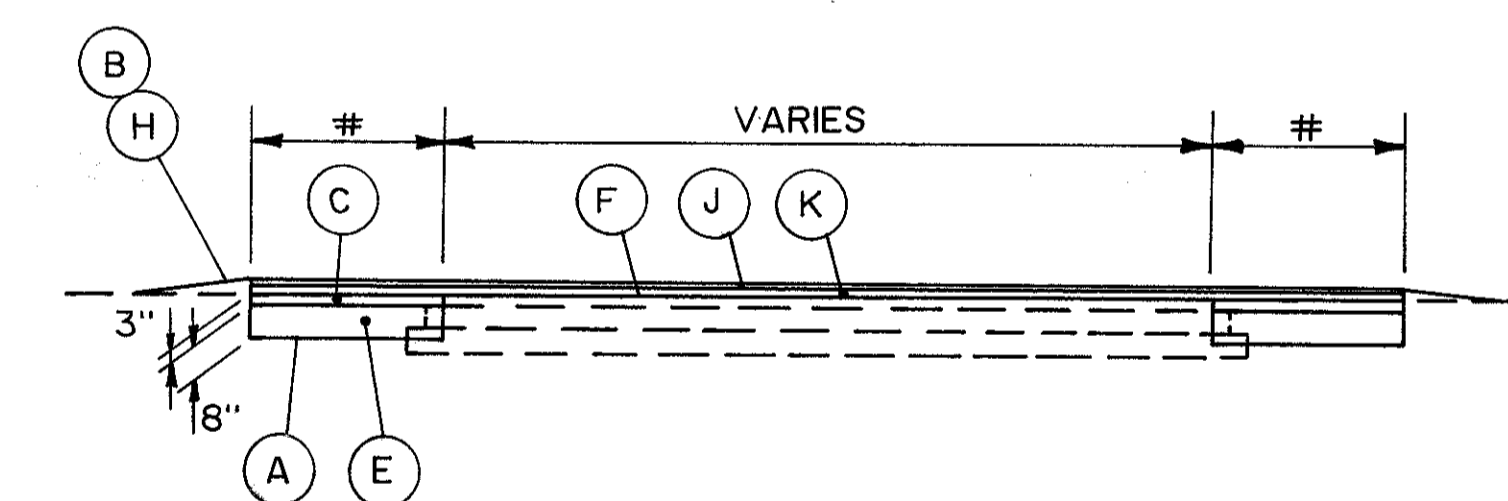
**TYPICAL SECTION A-A**

STA. 664+00 \*\*  
\*\* ALSO REPLACE BOTH 4' x 258.54'  
MEDIAN SHOULDERS.



**TYPICAL SECTION A-A**

STA. 683+90



**TYPICAL SECTION A-A**

STA. 731+00 STA. 795+30  
STA. 769+10 STA. 860+50

# - WIDEN TO DIMENSIONS SHOWN ON  
TYPICAL CROSSOVER

**LEGEND**

- (A) 203 - EXC. NOT INCL. EMBANKMENT CONSTRUCTION
- (B) 203 - EMBANKMENT, AS PER PLAN
- (C) 301 - BITUMINOUS AGGREGATE BASE
- (E) 310 - SUBBASE, TYPE II
- (F) 407 - TACK COAT
- (H) 659 - SEEDING AND MULCHING
- (J) 446 - 1 1/4" ASPHALT CONC. SURFACE COURSE, TYPE I, A.P.P.
- (K) 446 - 1 3/4" ASPHALT CONC. INTERMEDIATE COURSE, TYPE II

\* FOR COMMERCIAL FERTILIZER AND  
AGRICULTURAL LIMING QUANTITIES  
SEE SHEET 21

LOCATION	PARTICIPATION CODE	MEDIAN WIDTH, M	CROSSOVER DIMENSIONS		ESTIMATED QUANTITIES										
			R1	R2	D1	D2	203	203	301	310	407	659 *	446		
			FT.	FT.	FT.	FT.	EXC. NOT INCL. EMB. CONSTR. CU. YDS.	EMBANKMENT AS PER PLAN CU. YDS.	BIT. AGG. BASE, AC-20 CU. YDS.	SUBBASE TYPE II AS PER PLAN CU. YDS.	TACK COAT GALS.	SEEDING AND MULCHING SQ. YDS.	ASP. CONC. SUR. COURSE TYPE I CU. YDS.	ASP. CONC. INT. COURSE TYPE II CU. YDS.	
664+00	I	50	11.64	29.40	36.83	21.71	154.7	66.7	49	131.5	27	479	12.6	17.6	
683+90	I	44	9.49	24.43	32.47	19.73	89.0	61.0	—	—	—	291	—	—	
731+00	I	44	9.49	24.43	32.47	19.73	11.4	6.1	3.1	8.3	24.6	110	11.4	16.0	
769+10	I	44	9.49	24.43	32.47	19.73	11.4	6.1	3.1	8.3	24.6	110	11.4	16.0	
795+30	II	44	9.49	24.43	32.47	19.73	11.4	6.1	3.1	8.3	24.6	110	11.4	16.0	
860+50	II	44	9.49	24.43	32.47	19.73	11.4	6.1	3.1	8.3	24.6	110	11.4	16.0	
TOTALS:							I - CITY OF PAINESVILLE, F & S	267	140	55	148	76	990	35	50
							II - FEDERAL & STATE	23	12	6	17	49	220	23	32