

FED. RD. DIVISION	STATE	PROJECT	
2	OHIO		

384
384

LAK-2-14.22
R/W PLAN
LIMITED ACCESS

BEARINGS DISTANCES

PARCEL 7-SL

1	S. 59° 51' 53" E.	90.53'
2	S. 55° 02' 17" E.	127.13'
3	S. 37° 48' 13" W.	7.63'
4	N. 55° 02' 17" W.	216.97'

OCCUPATIONAL EASEMENTS
PARCEL 7A

5	N. 37° 48' 13" E.	7.63'
6	S. 52° 11' 47" E.	39.00'
7	S. 37° 48' 13" W.	5.69'
8	N. 55° 02' 17" W.	39.05'

PARCEL 7B

9	N. 37° 48' 13" E.	18.00'
10	S. 52° 11' 47" E.	39.00'
11	S. 37° 48' 13" W.	18.00'
12	N. 52° 11' 47" W.	39.00'

PARCEL 7C

13	N. 37° 48' 13" E.	18.00'
14	S. 52° 11' 47" E.	33.00'
15	S. 37° 48' 13" W.	18.00'
16	N. 52° 11' 47" W.	33.00'

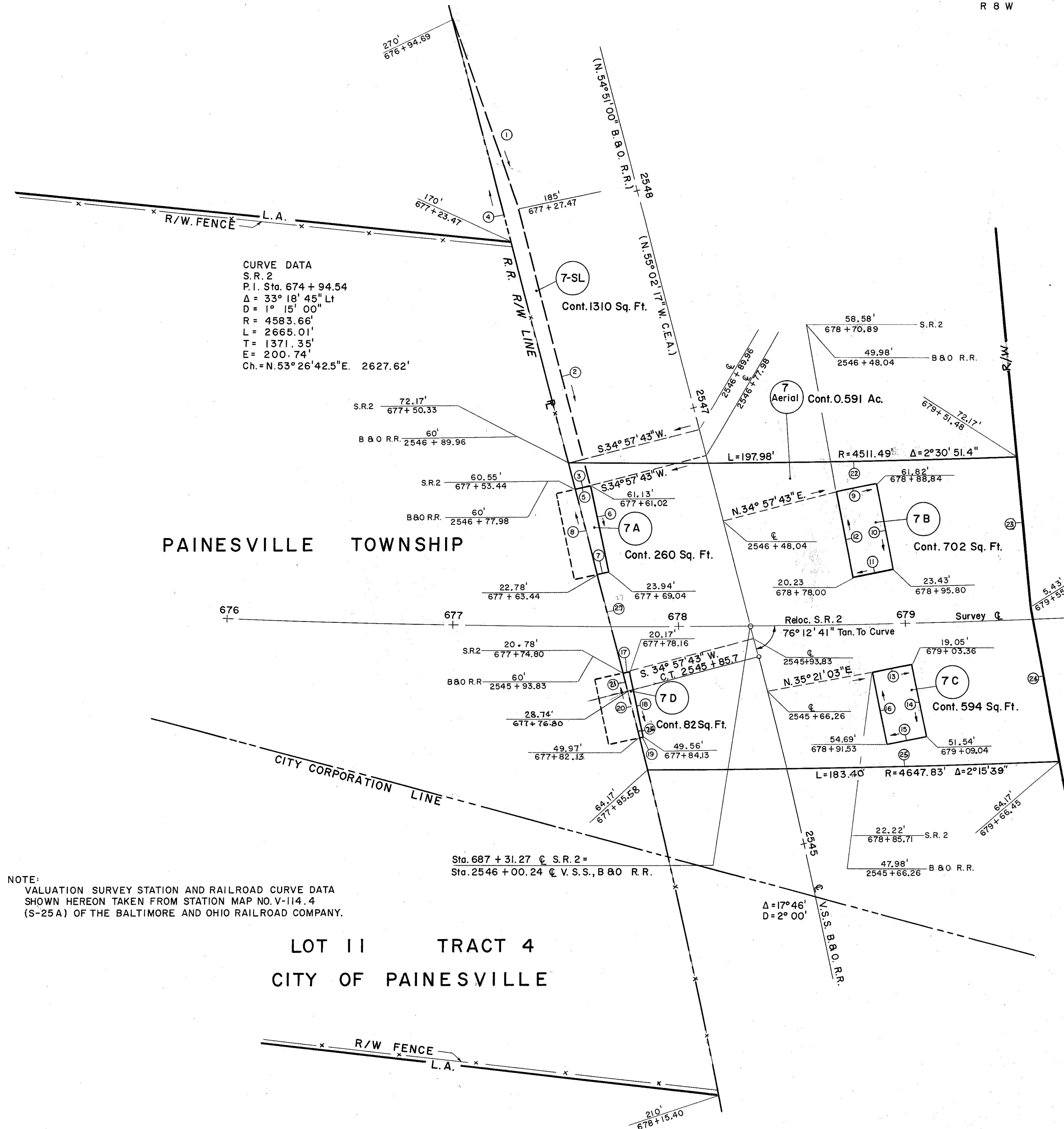
PARCEL 7D

17	N. 37° 48' 13" E.	3.45'
18	S. 52° 11' 47" E.	30.00'
19	S. 37° 48' 13" W.	2.05'
20	Ch. N. 54° 48' 51" W.	21.90' (L=21.92', R=2804.79', Δ=0° 26' 51")
21	N. 55° 02' 17" W.	8.13'

PARCEL 7 AERIAL

22	Ch. N. 48° 28' 43" E.	197.96' (L=197.98', R=4511.49', Δ=2° 30' 51.4")
23	S. 45° 45' 42" E.	66.89'
24	S. 52° 15' 30" E.	70.59'
25	Ch. S. 48° 11' 18" W.	183.39' (L=183.40', R=4647.83', Δ=2° 15' 39")
26	Ch. N. 54° 39' 53" W.	36.54' (L=36.54', R=2804.79', Δ=0° 44' 47")
27	N. 55° 02' 17" W.	104.26'

CURVE DATA
S.R. 2
P.I. Sta. 674 + 94.54
Δ = 33° 18' 45" Lt
D = 1° 15' 00"
R = 4583.66'
L = 2665.01'
T = 1371.35'
E = 200.74'
Ch. = N. 53° 26' 42.5" E. 2627.62'



NOTE:
VALUATION SURVEY STATION AND RAILROAD CURVE DATA
SHOWN HEREON TAKEN FROM STATION MAP NO. V-114.4
(S-25A) OF THE BALTIMORE AND OHIO RAILROAD COMPANY.

LOT II TRACT 4
CITY OF PAINESVILLE

LAK. 2-14.22 FED. AID PROJ. NO. FG - 329 (18)

PREPARED BY
CAPITOL ENGINEERING ASSOCIATES, DILLSBURG, PA.
FOR

STATE OF OHIO
DEPARTMENT OF HIGHWAYS

OCCUPATIONAL EASEMENTS
AND
AERIAL EASEMENT
BRIDGE NO. LAK 2-14.71 L & R
OVER B & O. RAILROAD PROPERTY
PAINESVILLE TOWNSHIP, OHIO
SCALE: 1" = 25'

DESIGNED M.S.	DRAWN M.S.	TRACED	CHECKED D.A.B. P.T.D.	DATE SEPT. 9, 1960	REVISED 9-23-60
------------------	---------------	--------	-----------------------------	-----------------------	--------------------

R/W PLAN OF B & O R. R. CO.