

PAINESVILLE TOWNSHIP

CITY OF PAINESVILLE WARD 4

TRACT 4

TRACT 4 LOT II

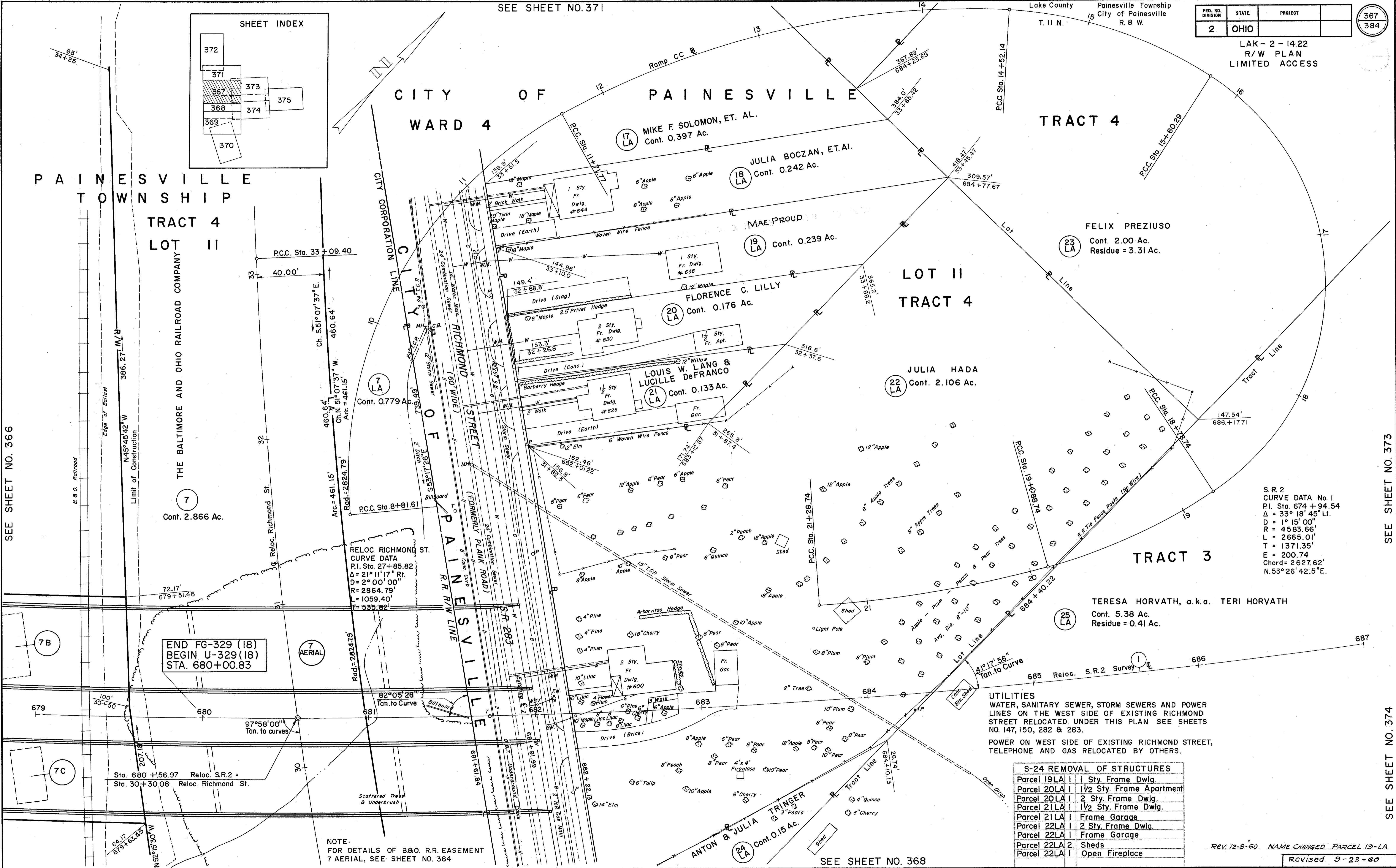
LOT II TRACT 4

TRACT 3

SEE SHEET NO. 366

SEE SHEET NO. 373

SEE SHEET NO. 374



END FG-329 (18)  
BEGIN U-329 (18)  
STA. 680+00.83

RELOC RICHMOND ST.  
CURVE DATA  
P.I. Sta. 27+85.82  
Δ = 21° 11' 17" Rt.  
D = 2° 00' 00"  
R = 2864.79'  
L = 1059.40'  
T = 535.82'

UTILITIES  
WATER, SANITARY SEWER, STORM SEWERS AND POWER LINES ON THE WEST SIDE OF EXISTING RICHMOND STREET RELOCATED UNDER THIS PLAN SEE SHEETS NO. 147, 150, 282 & 283.  
POWER ON WEST SIDE OF EXISTING RICHMOND STREET, TELEPHONE AND GAS RELOCATED BY OTHERS.

S-24 REMOVAL OF STRUCTURES	
Parcel 19LA	1 1/2 Sty. Frame Dwlg.
Parcel 20LA	1 1/2 Sty. Frame Apartment
Parcel 20LA	2 Sty. Frame Dwlg.
Parcel 21LA	1 1/2 Sty. Frame Dwlg.
Parcel 21LA	1 Frame Garage
Parcel 22LA	2 Sty. Frame Dwlg.
Parcel 22LA	1 Frame Garage
Parcel 22LA	2 Sheds
Parcel 22LA	1 Open Fireplace

S.R. 2  
CURVE DATA No. 1  
P.I. Sta. 674+94.54  
Δ = 33° 18' 45" Lt.  
D = 1° 15' 00"  
R = 4583.66'  
L = 2665.01'  
T = 1371.35'  
E = 200.74  
Chord = 2627.62'  
N.53° 26' 42.5"E.

NOTE:  
FOR DETAILS OF B&O. R.R. EASEMENT  
7 AERIAL, SEE SHEET NO. 384

REV. 12-8-60 NAME CHANGED PARCEL 19-LA  
Revised 9-23-60

SEE SHEET NO. 368

R/W PLAN RICHMOND STREET INTERCHANGE