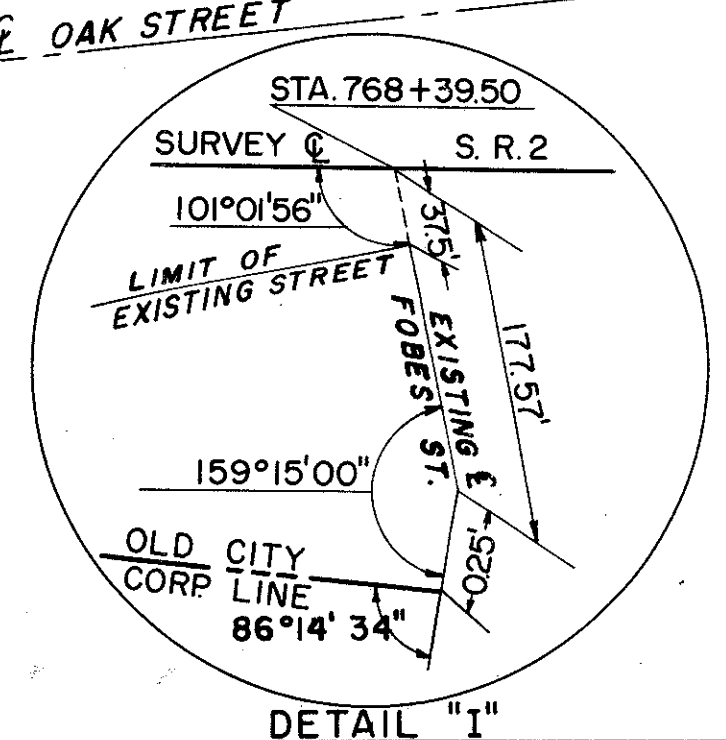
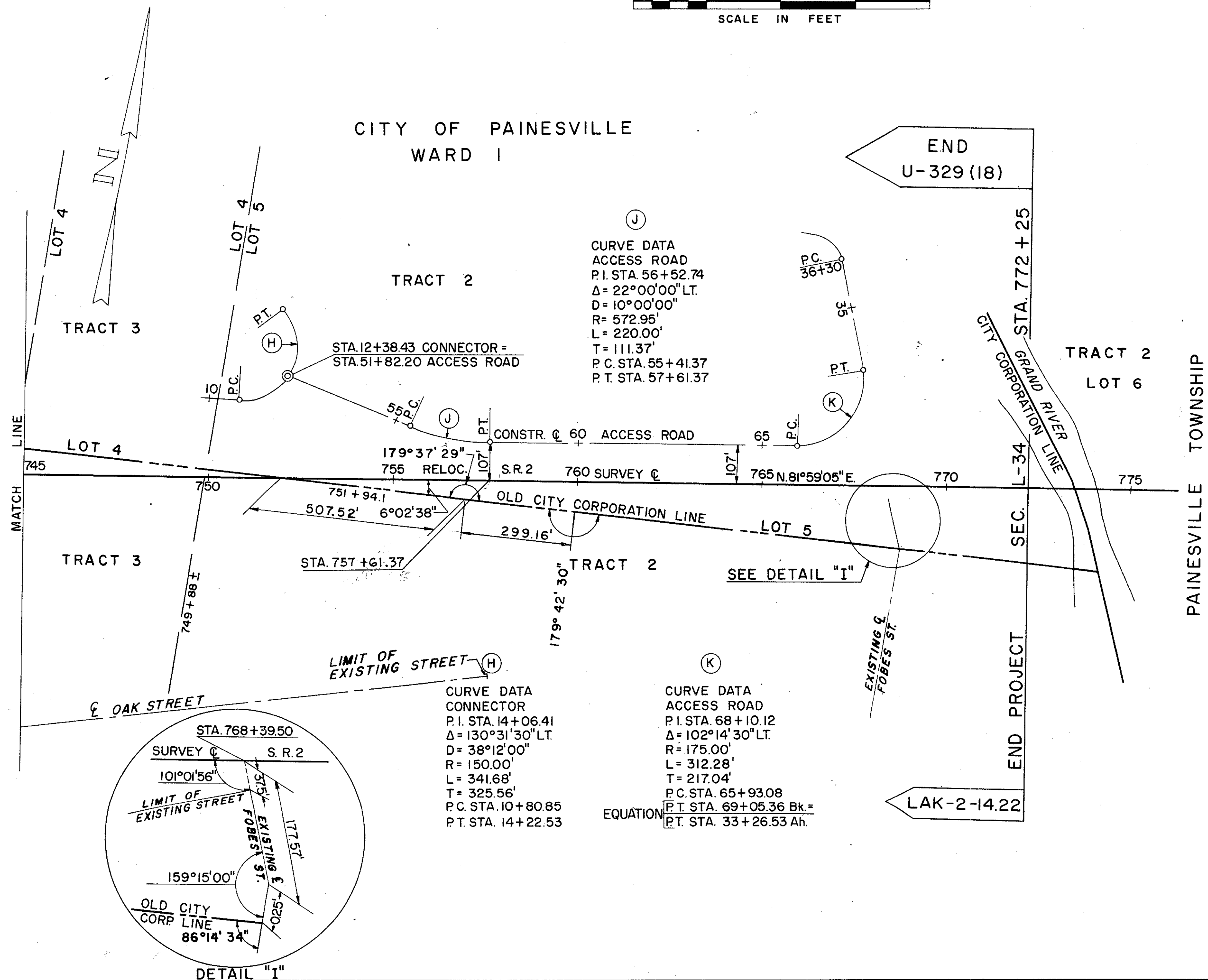


LOCATION PLAN

LAK - 2 - 14.22

PAINESVILLE TOWNSHIP CITY OF PAINESVILLE LAKE COUNTY



**CURVE DATA
ACCESS ROAD**
 P.I. STA. 56+52.74
 $\Delta = 22^\circ 00' 00''$ LT.
 $D = 10^\circ 00' 00''$
 $R = 572.95'$
 $L = 220.00'$
 $T = 111.37'$
 P.C. STA. 55+41.37
 P.T. STA. 57+61.37

**CURVE DATA
CONNECTOR**
 P.I. STA. 14+06.41
 $\Delta = 130^\circ 31' 30''$ LT.
 $D = 38^\circ 12' 00''$
 $R = 150.00'$
 $L = 341.68'$
 $T = 325.56'$
 P.C. STA. 10+80.85
 P.T. STA. 14+22.53

**CURVE DATA
ACCESS ROAD**
 P.I. STA. 68+10.12
 $\Delta = 102^\circ 14' 30''$ LT.
 $R = 175.00'$
 $L = 312.28'$
 $T = 217.04'$
 P.C. STA. 65+93.08
 P.T. STA. 69+05.36 Bk.=
 P.T. STA. 33+26.53 Ah.

LIMITED ACCESS

Received _____ Time _____
 Recorded _____
 Plat Book VOL N Page 51-2
 Signed _____ Recorder Lake County, Ohio
 Fee _____ Paid _____

358
384

Signed Wm B. Henry
 Division Engineer

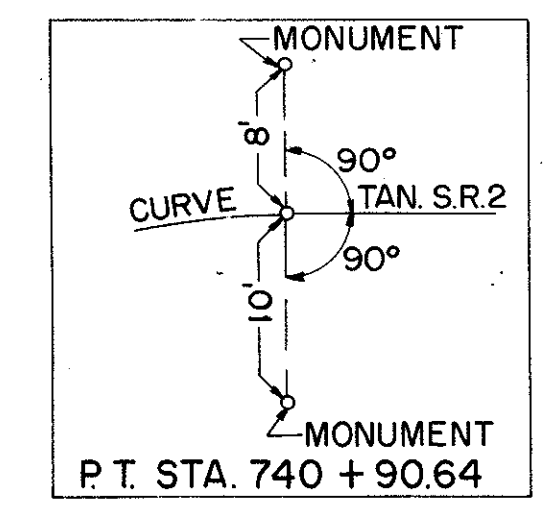
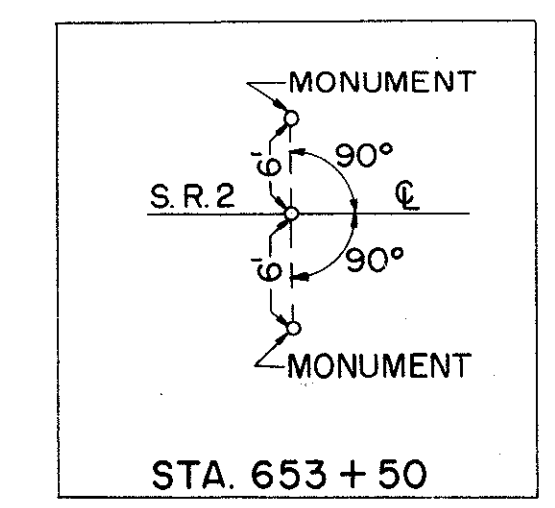
Date 12-23-60

Signed John C. Brillhart
 John C. Brillhart, Registered Surveyor No. 4659
 Capital Engineering Associates

Date Sept. 12, 1960

Location and Limited Access Approved and Journalized by the Director of Highways, Recorded on Date _____ in Volume _____ Page _____ of the Director's Journal, Pursuant to Law.

MONUMENTS TO BE SET AFTER CONSTRUCTION			
STATION	☉	STATION	☉
653 + 50	OFFSET	719 + 50	P.O.C.
661 + 23.19	P.C.	726 + 50	P.O.C.
668 + 50	P.O.C.	734 + 50	P.O.C.
676 + 00	P.O.C.	740 + 90.64	OFFSET
683 + 00	P.O.C.	748 + 50	P.O.T.
687 + 88.20	P.T.	756 + 00	P.O.T.
696 + 00	P.O.T.	764 + 00	P.O.T.
704 + 74.97	P.C.	771 + 50	P.O.T.
712 + 00	P.O.C.		



3-20-61
 P.T. Sta. 756 + 50.37
 Changed To Sta. 757 + 61.37
 by Meywes@ LAKE
 COUNTY RECORDERS.