

LOCATION PLAN

LAK - 2 - 14.22

PAINESVILLE TOWNSHIP CITY OF PAINESVILLE

LAKE COUNTY

LIMITED ACCESS

Received Dec. 30, 1960 Time 11:50AM.

Recorded SAME DATE

Plat Book VOL. N Page 51

Signed _____ Recorder Lake County, Ohio

Fee _____ Paid _____

356
384

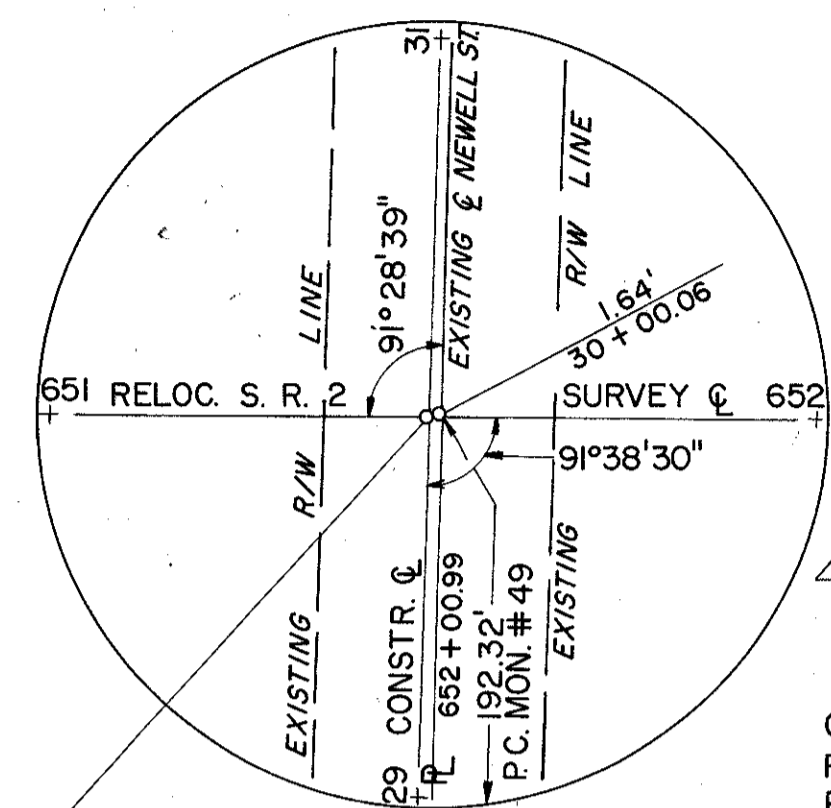
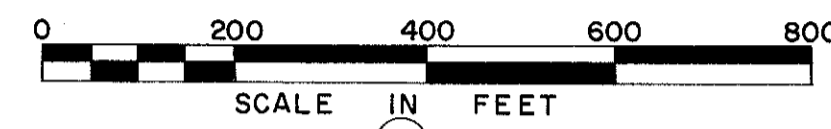
Signed Wm B. Denny
Division Engineer

Date 12-23-60

Signed John C. Brillhart
John C. Brillhart, Registered Surveyor No. 4659
Capitol Engineering Associates

Date Sept. 12, 1960

Location and Limited Access Approved and Journalized by the Director of Highways, Recorded on _____ in Volume _____ Page _____ of the Director's Journal, Pursuant to Law.



(A)
CURVE DATA
RELOC. BLACKBROOK RD.
P.I. STA. 52+22.13
300.00' LT. STA. 650+50
Δ = 14°02'10.48"
D = 8°00'00"
R = 716.197'
L = 175.45'
T = 88.17'
P.C. STA. 51+33.96
P.T. STA. 53+09.41
CH = 175.02

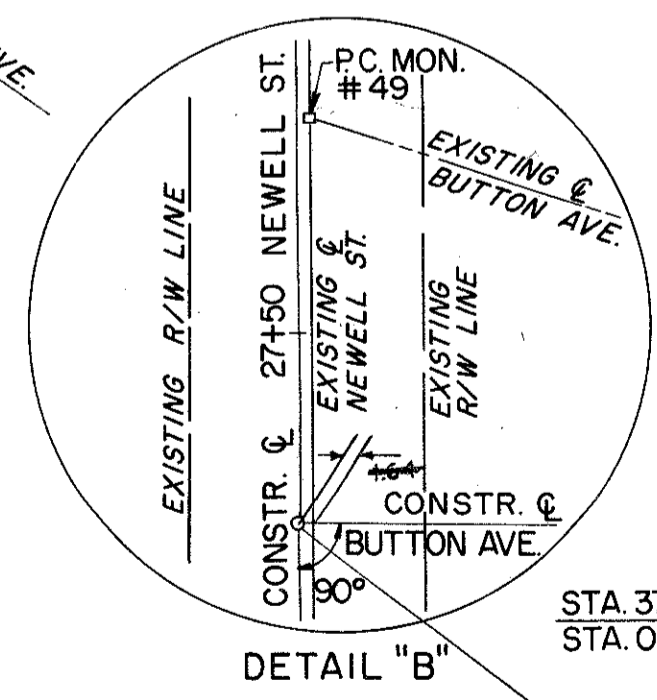
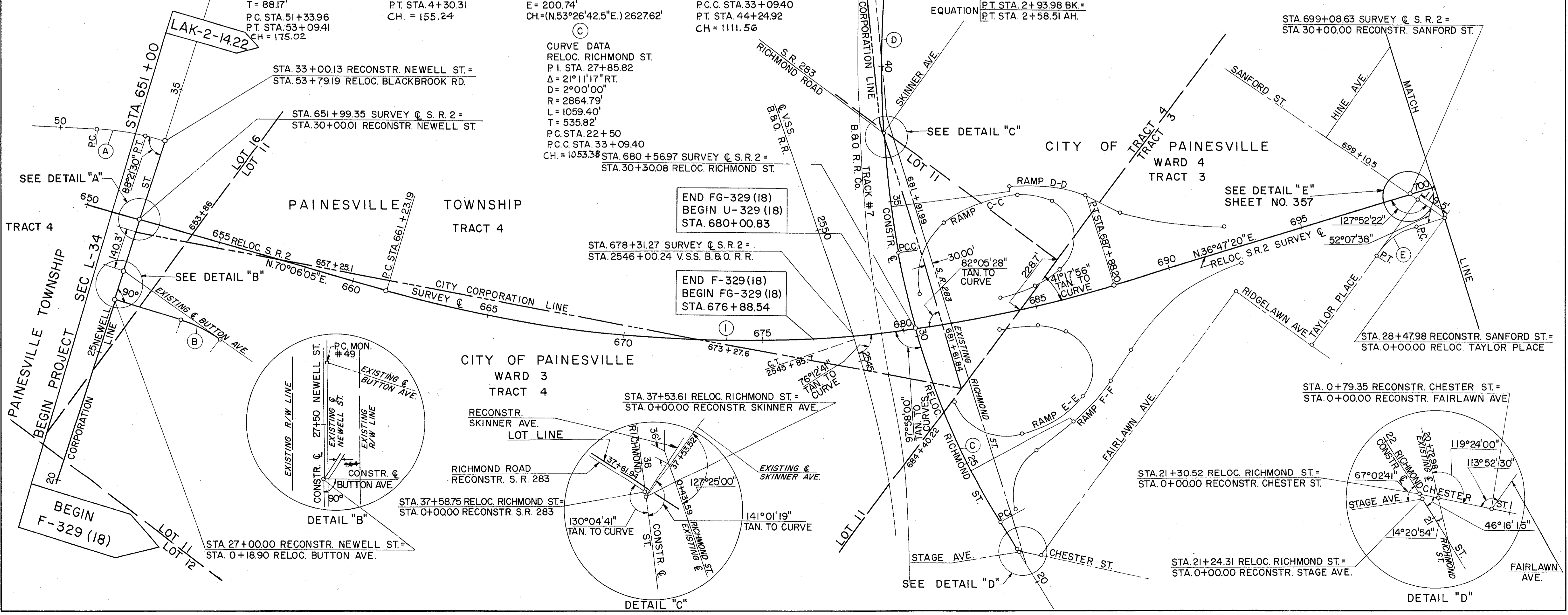
(B)
CURVE DATA
RELOC. BUTTON AVE.
P.I. STA. 3+53.01
Δ = 17°51'40"
R = 500.00'
L = 155.87'
T = 78.57'
P.C. STA. 2+74.44
P.T. STA. 4+30.31
CH = 155.24

(C)
CURVE DATA
RELOC. RICHMOND ST.
P.I. STA. 674+94.54
Δ = 33°18'45"
D = 1°15'00"
R = 4583.66'
L = 2665.01'
T = 1371.35'
E = 200.74'
CH = (N53°26'42.5"E.) 262762'

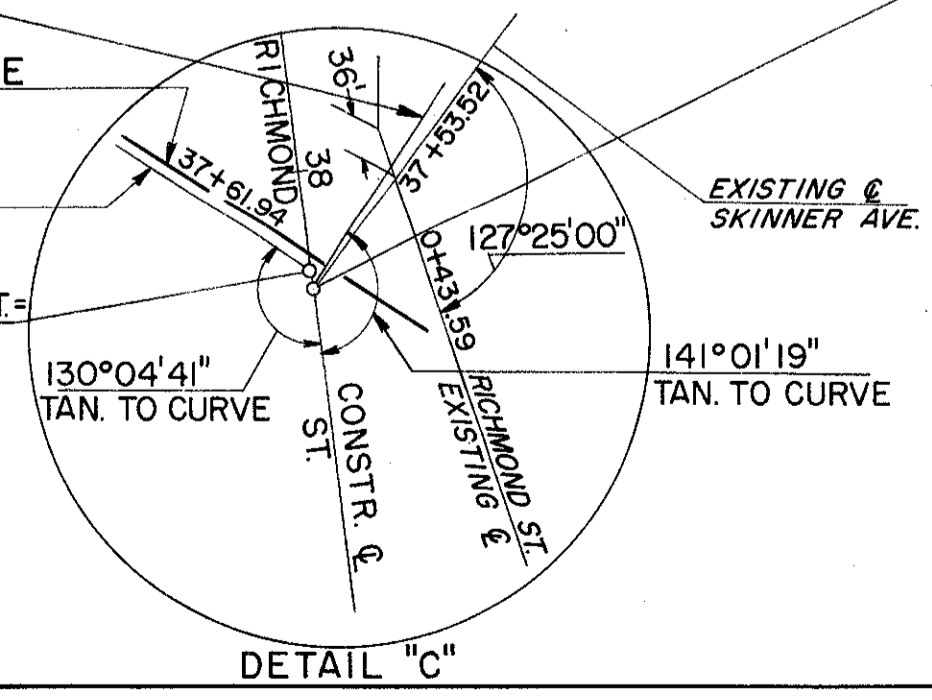
(D)
CURVE DATA
RELOC. RICHMOND ST.
P.I. STA. 38+71.16
Δ = 16°43'58" RT.
D = 1°30'00"
R = 3819.72'
L = 1115.52'
T = 561.76'
P.C. STA. 33+09.40
P.T. STA. 44+24.92
CH = 1111.56

(E)
CURVE DATA
RELOC. TAYLOR PLACE
P.I. STA. 2+00.64
Δ = 36°59'30" LT.
R = 300.00'
L = 193.69'
T = 100.35'
P.C. STA. 1+00.29
P.T. STA. 2+93.98 BK =
P.T. STA. 2+58.51 AH.

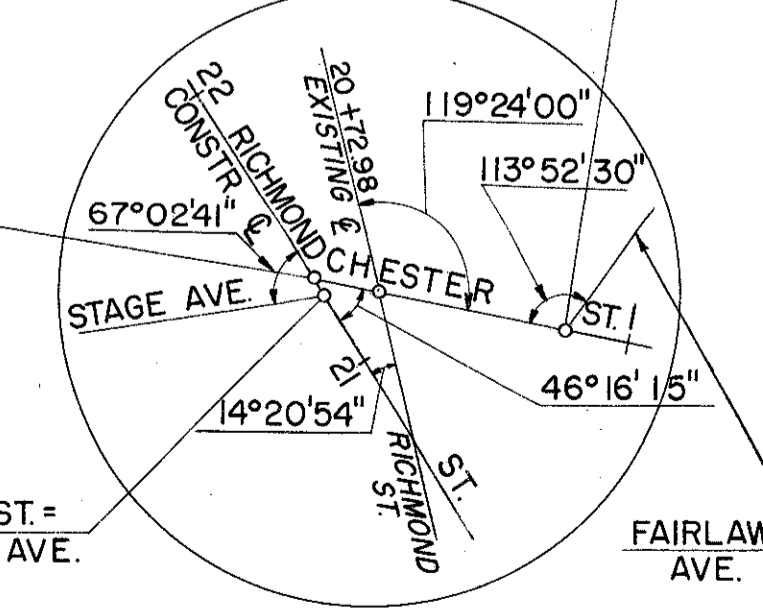
(C)
CURVE DATA
RELOC. RICHMOND ST.
P.I. STA. 27+85.82
Δ = 21°11'17" RT.
D = 2°00'00"
R = 2864.79'
L = 1059.40'
T = 535.82'
P.C. STA. 22+50
P.C.C. STA. 33+09.40
CH = 1053.38



(B)
CURVE DATA
RELOC. NEWELL ST.
P.I. STA. 27+00.00
Δ = 80°
R = 27.50'
L = 27.50'
T = 27.50'
P.C. STA. 27+00.00
P.T. STA. 0+18.90



(C)
CURVE DATA
RELOC. RICHMOND ST.
P.I. STA. 37+53.61
Δ = 127°25'00"
R = 367.81'
L = 367.81'
T = 367.81'
P.C. STA. 37+53.61
P.T. STA. 0+00.00



(D)
CURVE DATA
RELOC. RICHMOND ST.
P.I. STA. 21+30.52
Δ = 119°24'00"
R = 67.02'
L = 67.02'
T = 67.02'
P.C. STA. 21+30.52
P.T. STA. 0+00.00