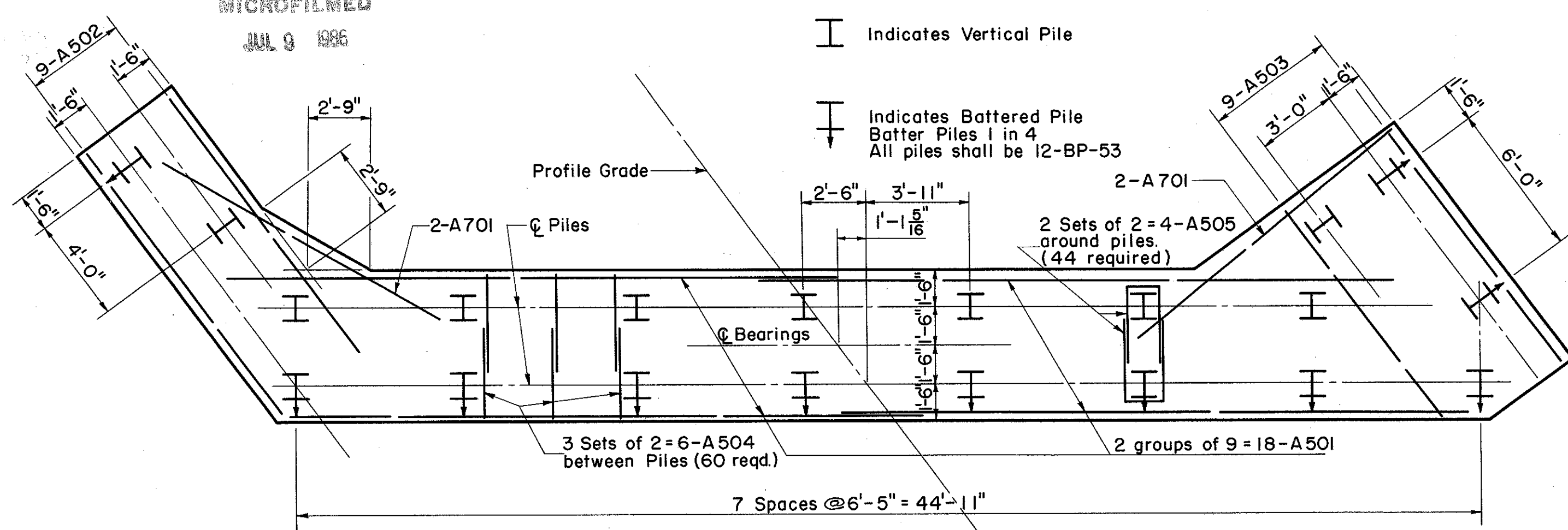


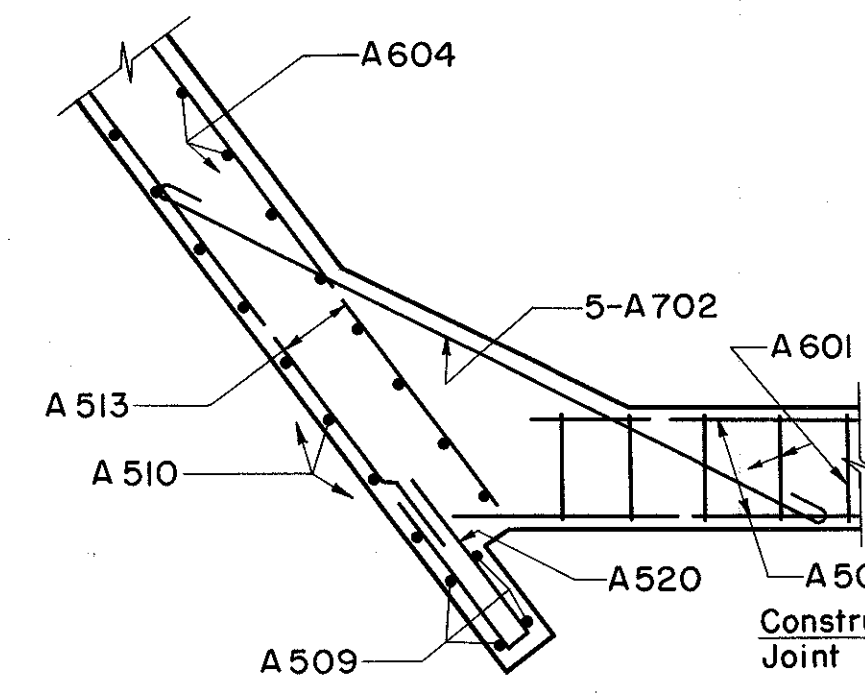
MICROFILMED
JUL 9 1986

FED. RD. DIVISION	STATE	PROJECT	350 384
2	OHIO		

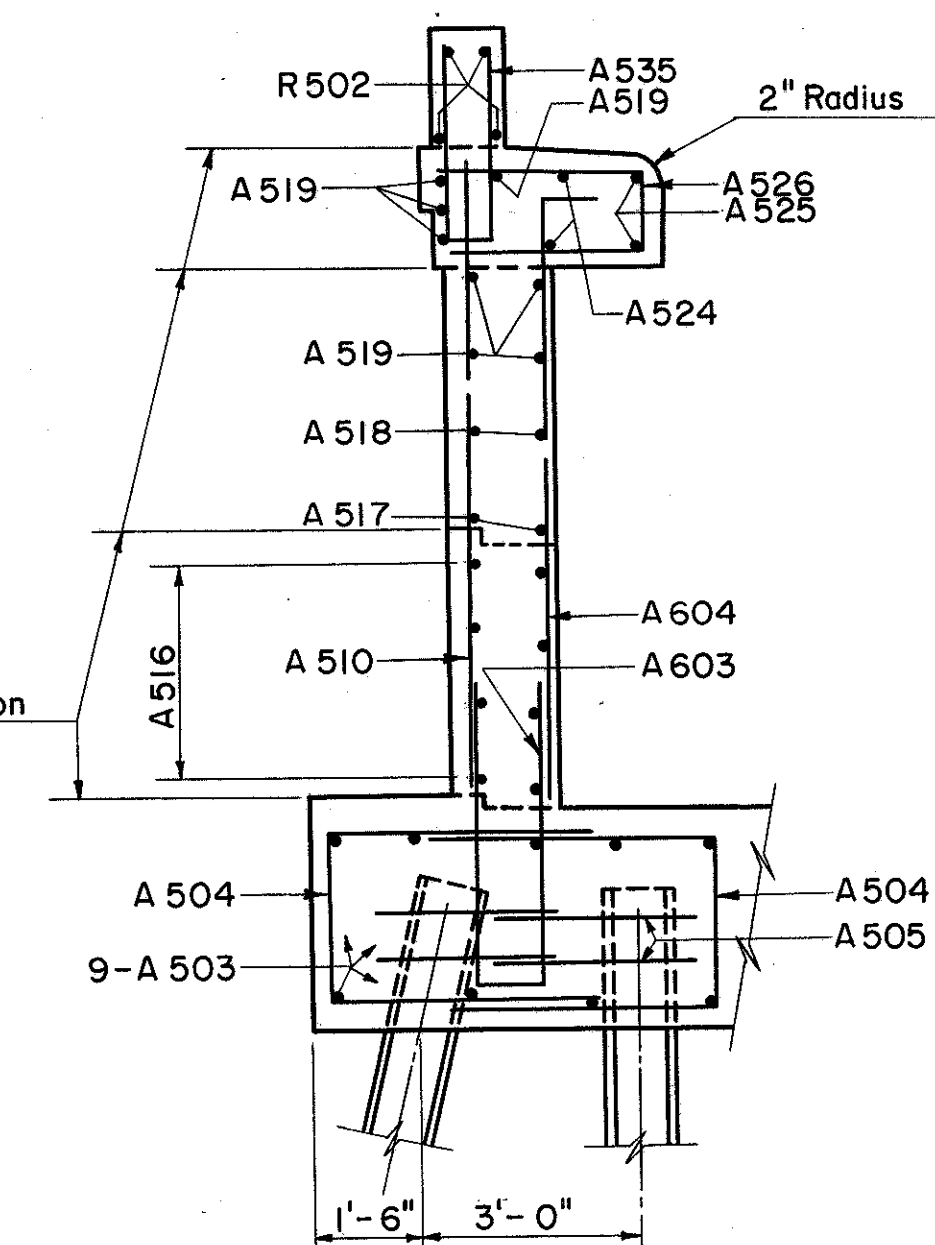
LAKE COUNTY
SEC. LAK-2-14.22



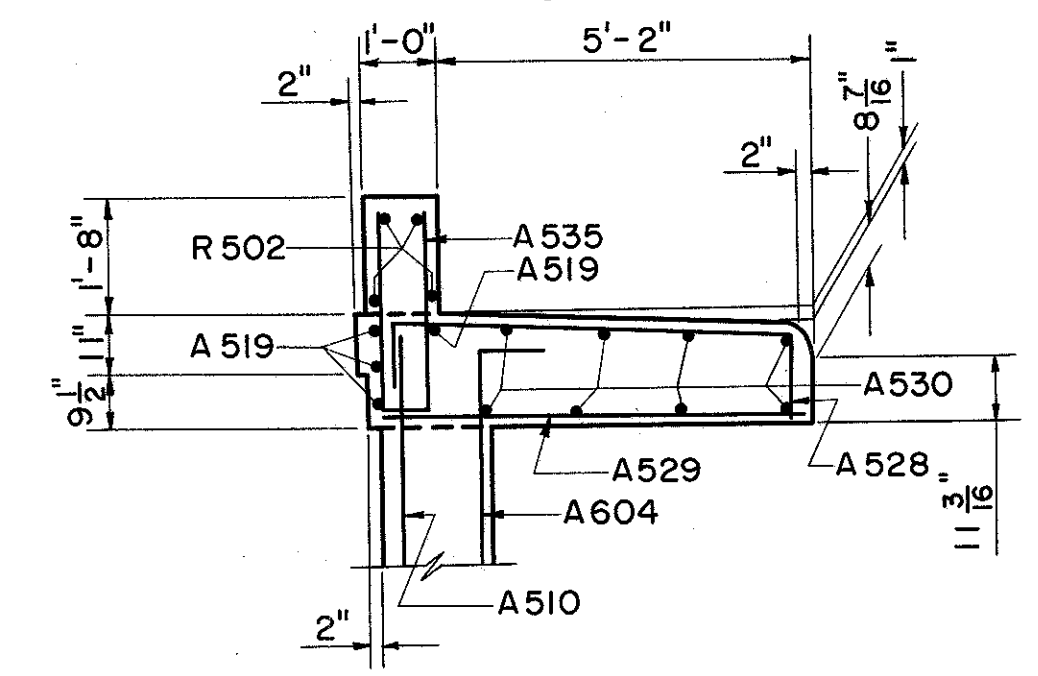
PILE PLAN AND FOOTING REINFORCEMENT
(DOWELS NOT SHOWN)



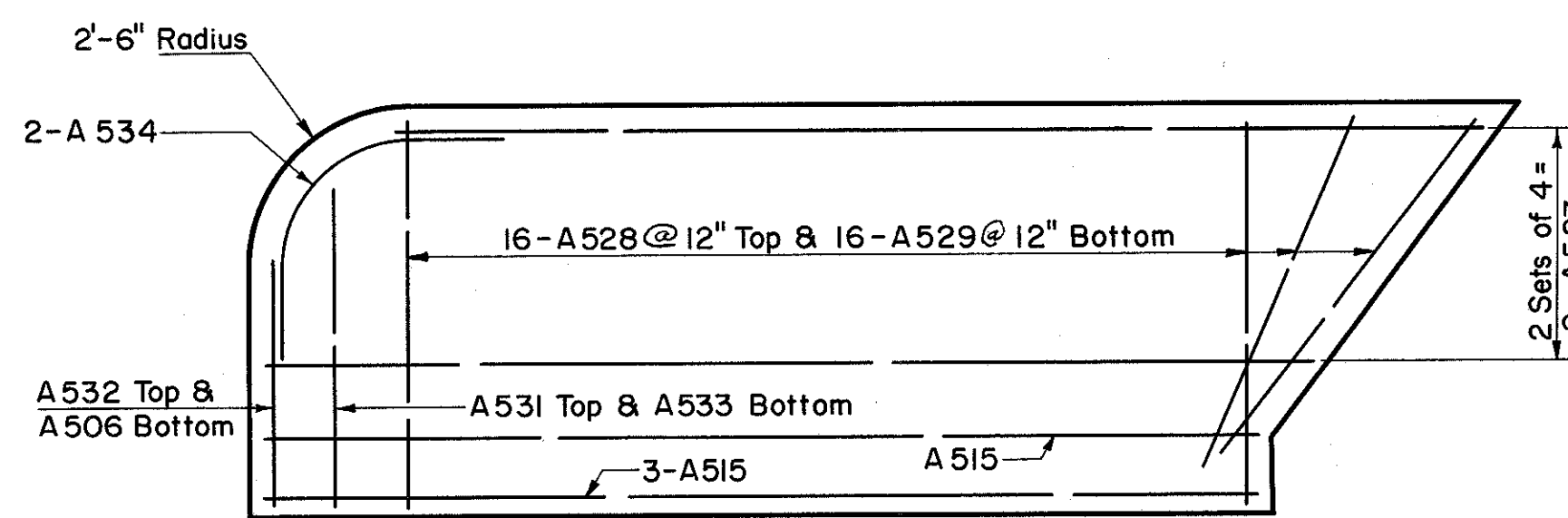
WING "A" FILLET DETAIL



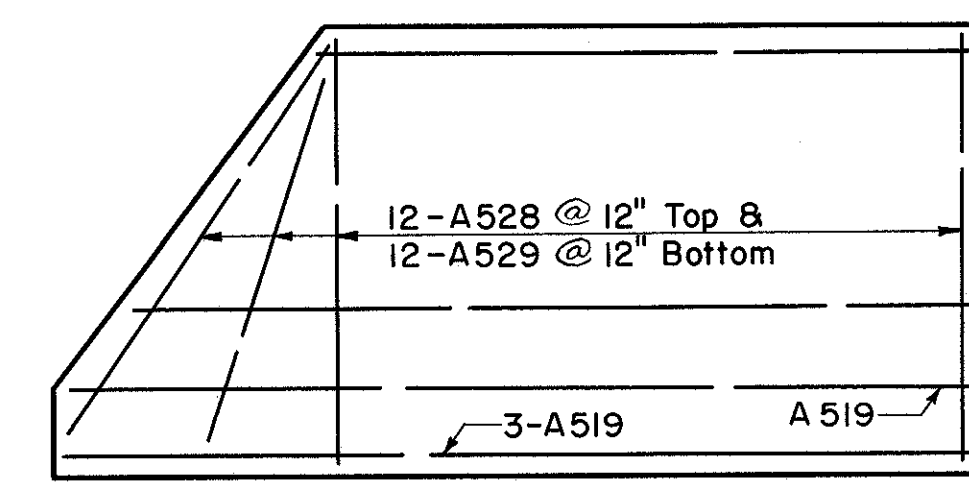
SECTION C-C
(SHOWING CURB ON ABUT. # 2)



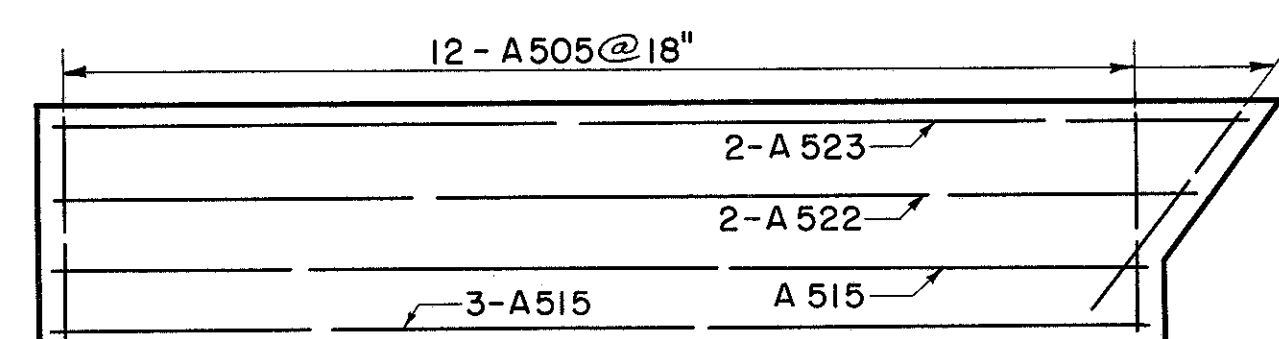
PART SECTION C-C
(SHOWING SIDEWALK ON ABUT. # 1)



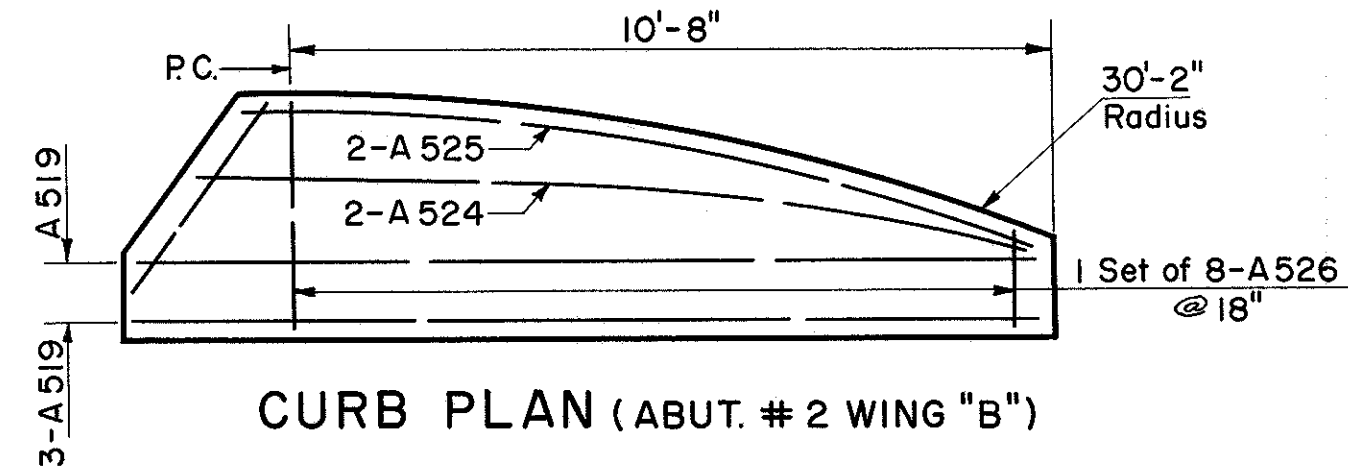
SIDEWALK PLAN (ABUT. # 2 WING "A")



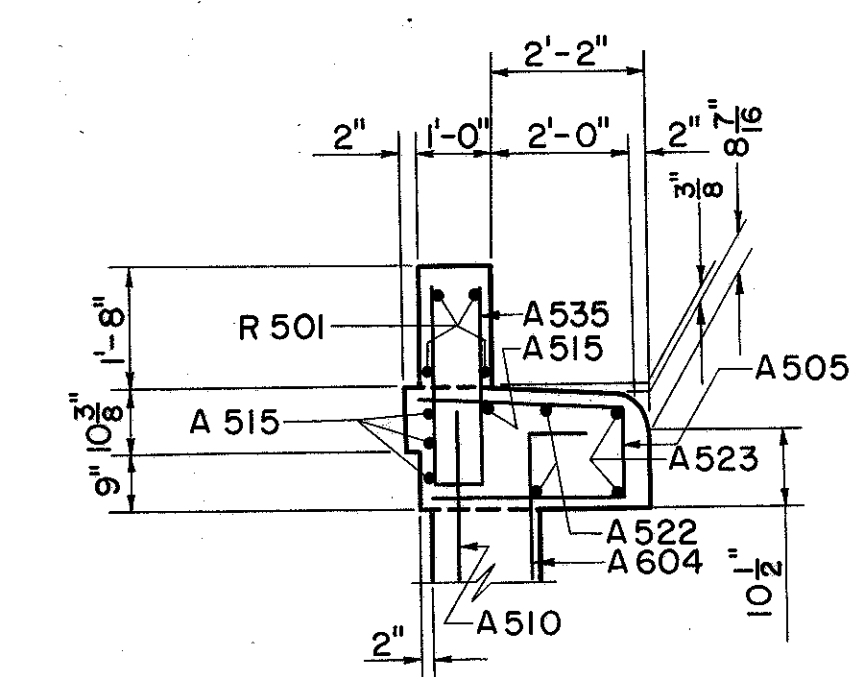
SIDEWALK PLAN (ABUT. # 1 WING "B")



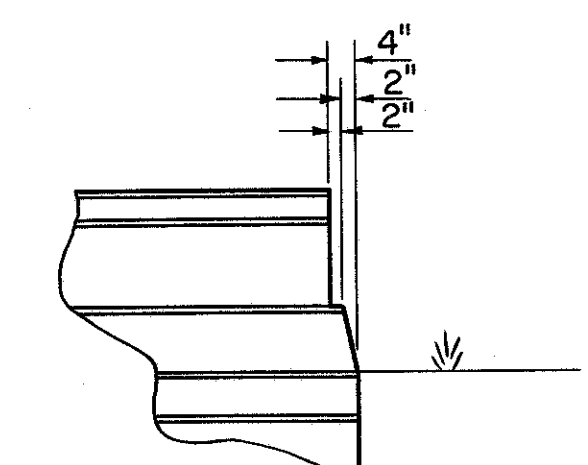
CURB PLAN (ABUT. # 1 WING "A")



CURB PLAN (ABUT. # 2 WING "B")

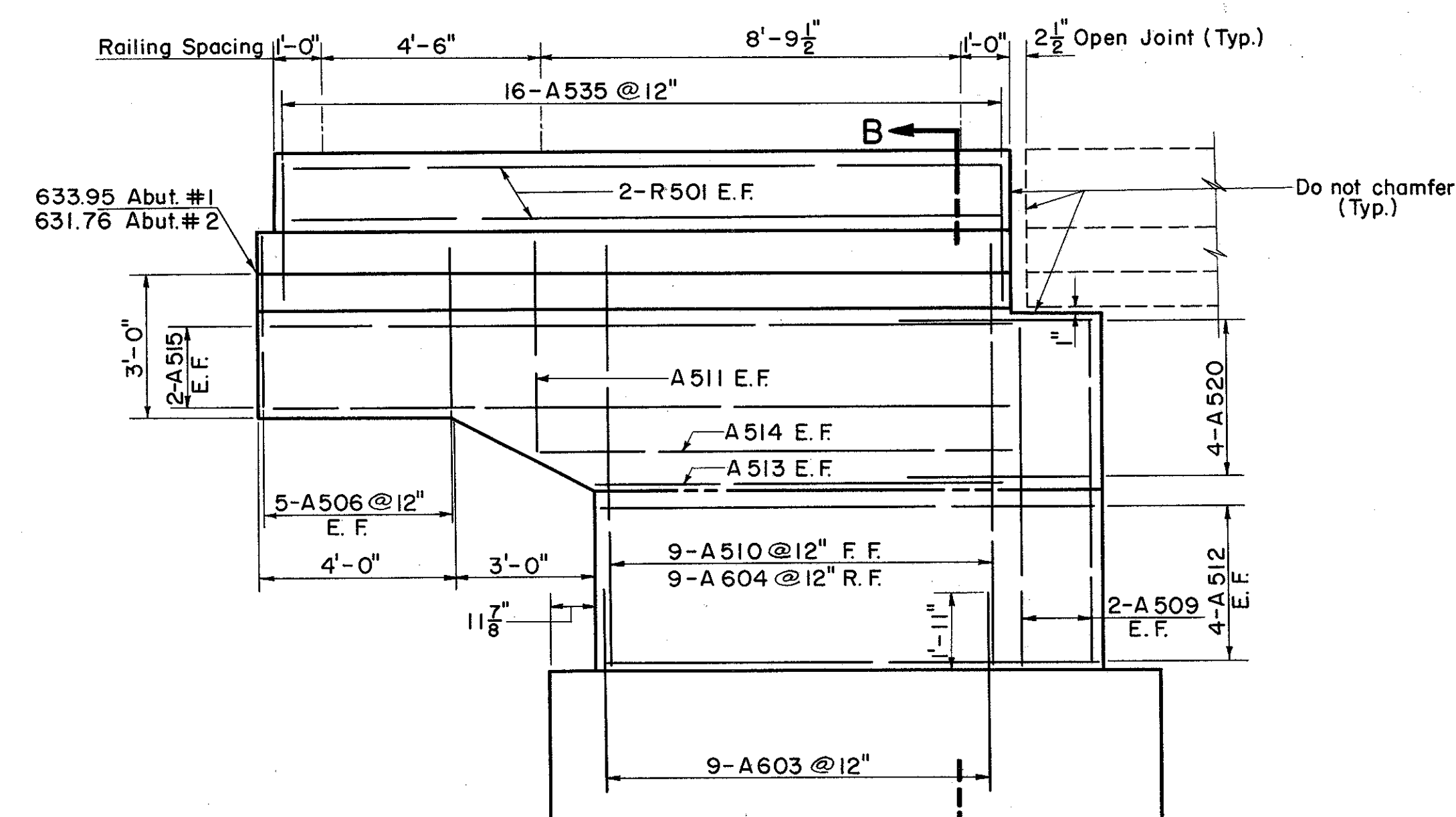


PART SECTION B-B
(SHOWING CURB ON ABUT. # 1)

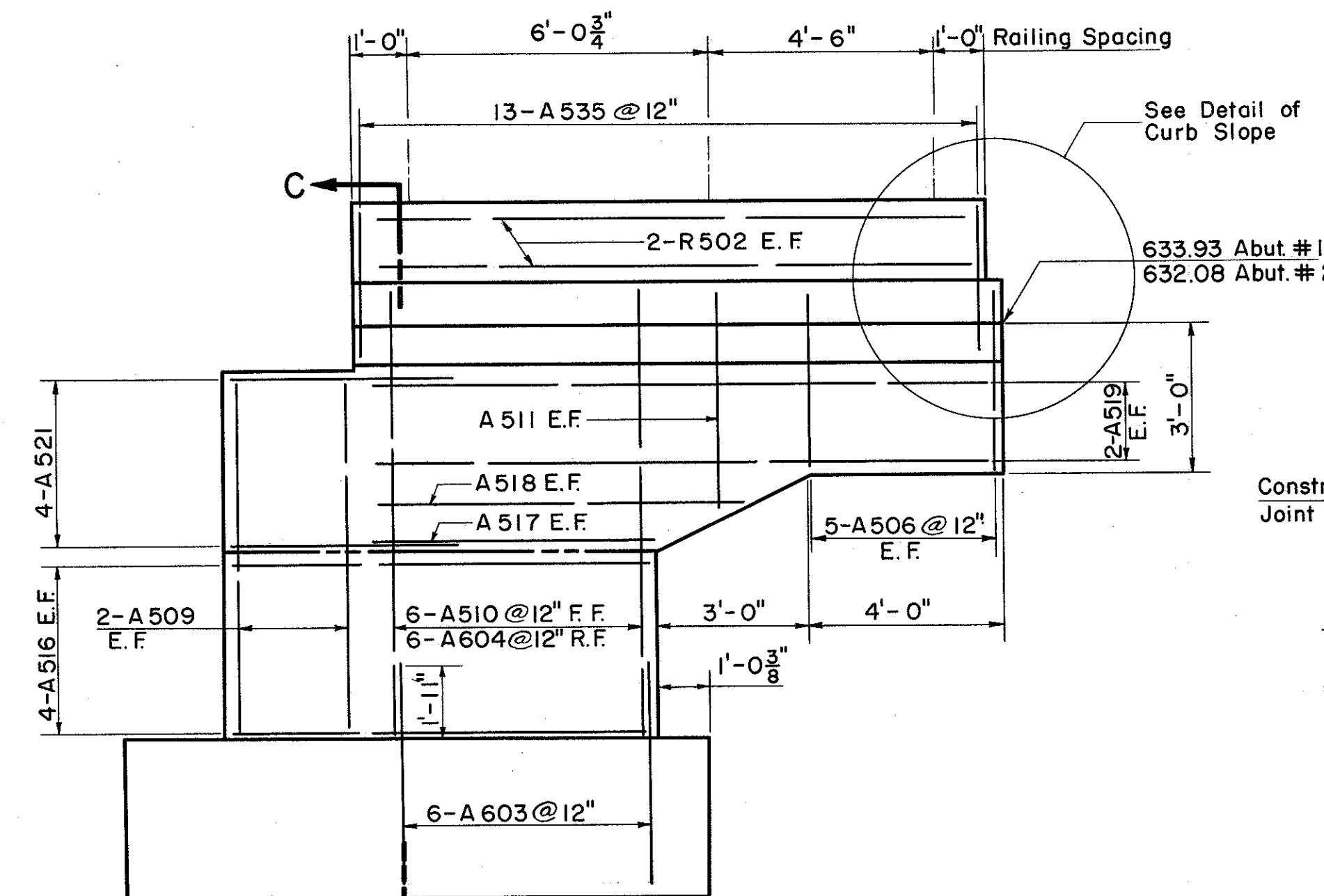


DETAIL OF CURB SLOPE
(BOTH WINGS ABUT. # 2)
(ABUT. # 1 FINISH SQUARE)

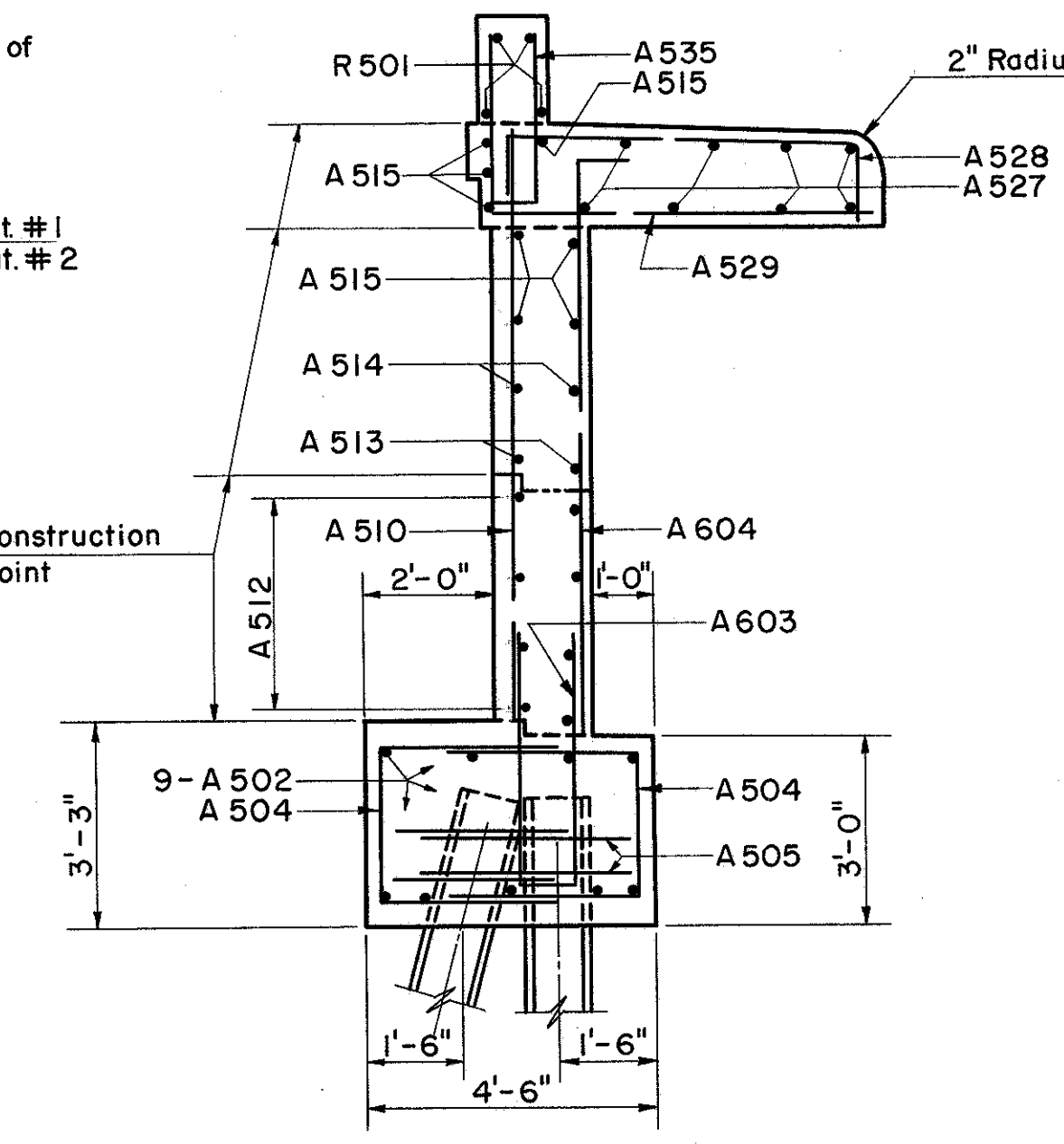
NOTE: The railing tube on the wing walls shall be continuous for a minimum of two panel lengths.



ELEVATION WING "A"



ELEVATION WING "B"



SECTION B-B
(SHOWING SIDEWALK ON ABUT. # 2)

PREPARED BY
CAPITOL ENGINEERING ASSOCIATES, DILLSBURG, PA.
FOR
STATE OF OHIO
DEPARTMENT OF HIGHWAYS
DIVISION OF DESIGN AND CONSTRUCTION
BUREAU OF BRIDGES
ABUTMENT DETAILS
BRIDGE NO. LAK-2-1593
S. R. 2 UNDER ELM STREET
LAKE COUNTY
STA. 741 + 03.27

DESIGNED DRT	DRAWN DRT	TRACED L.G.L. 1-29-60	CHECKED SM 1-29-60	REVIEWED DATE	REVISED
-----------------	--------------	-----------------------------	--------------------------	---------------	---------