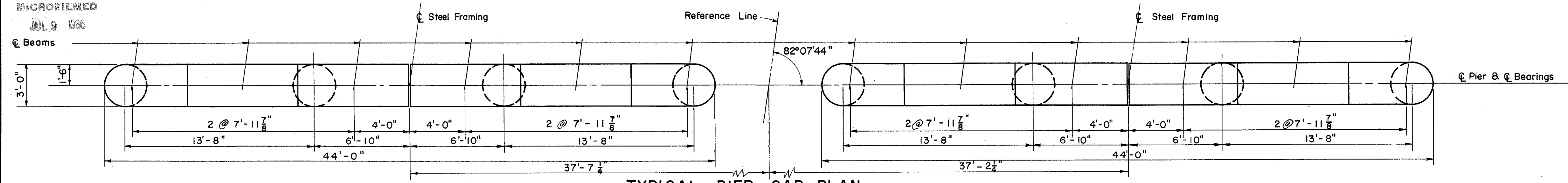
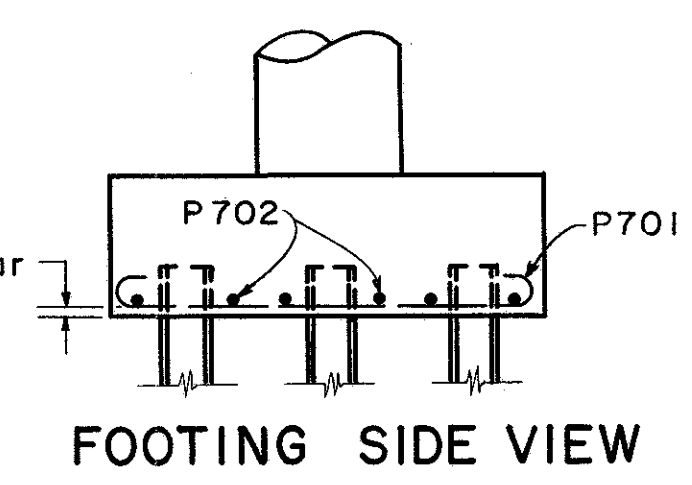
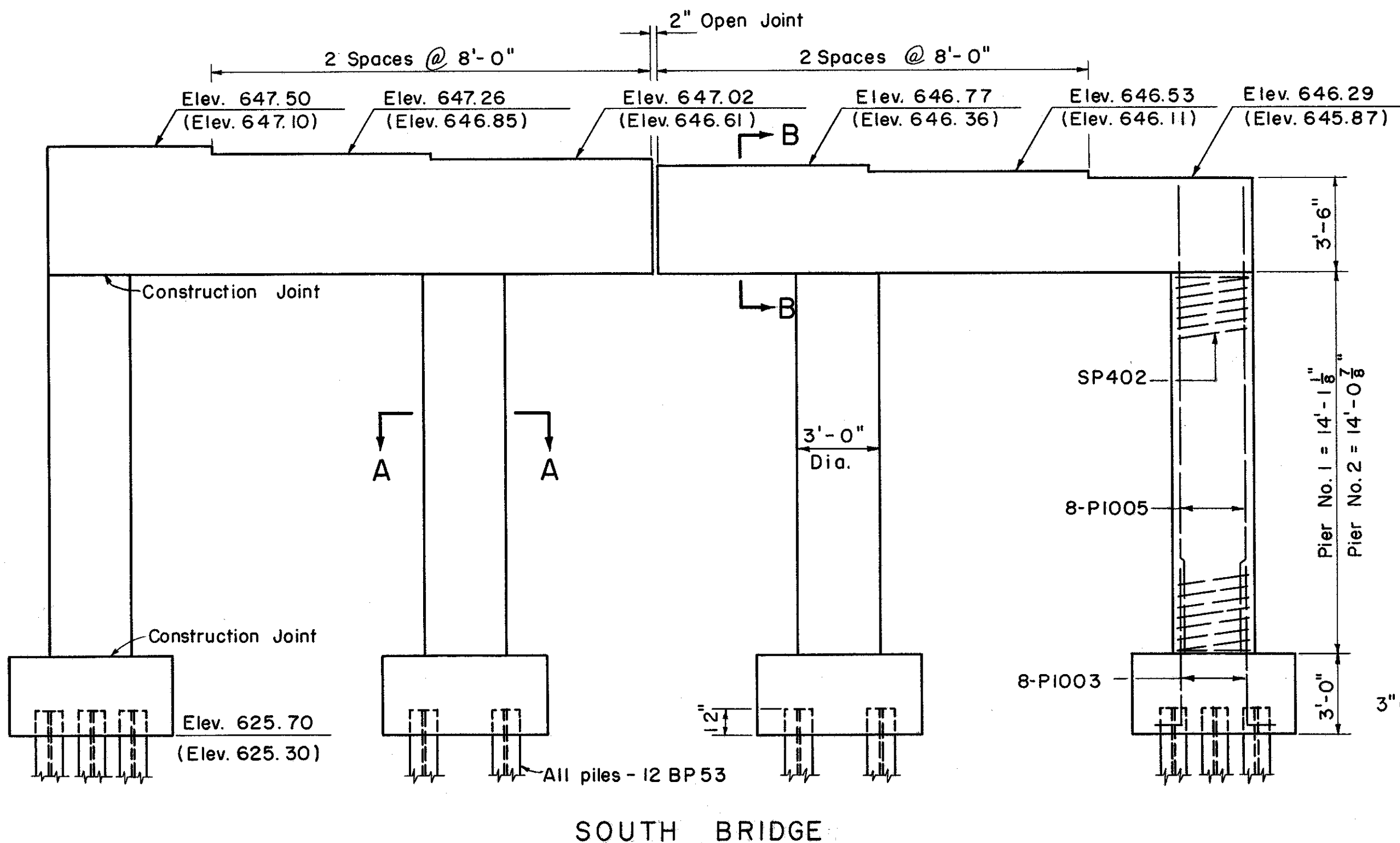
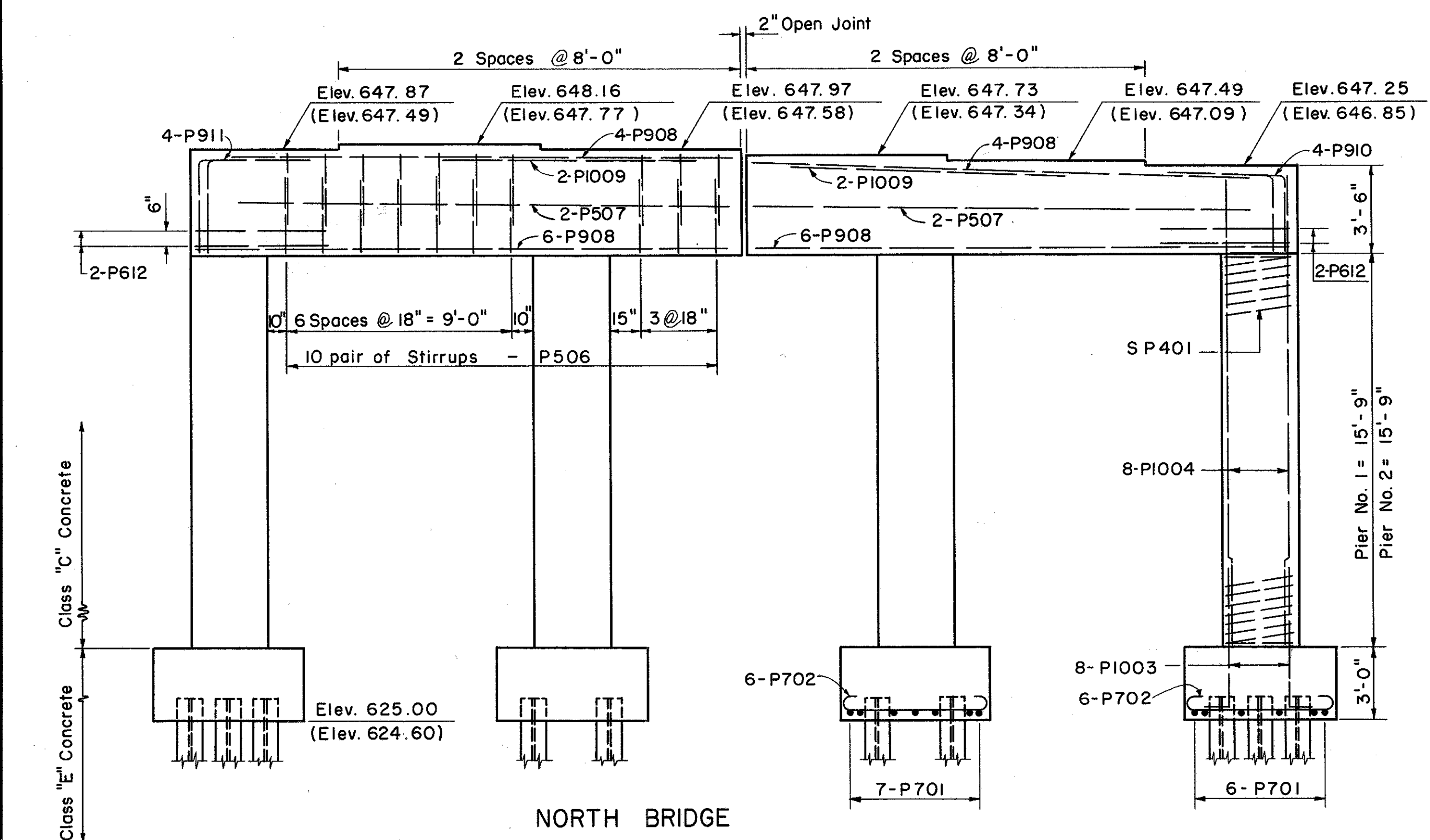


LAKE COUNTY
SEC. LAK-2-14.22

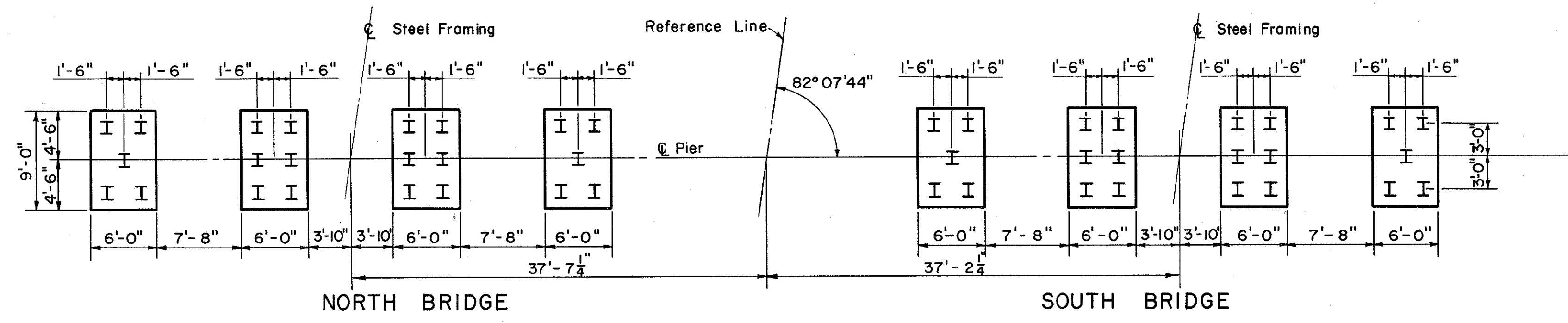
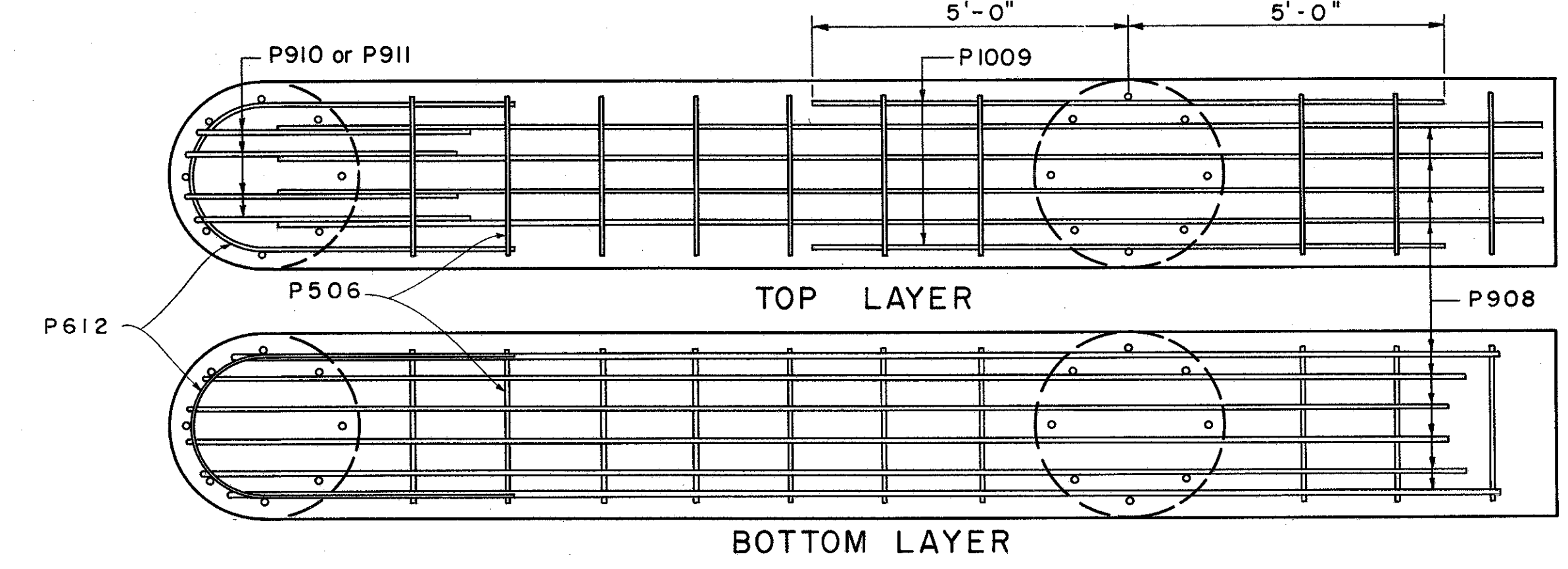
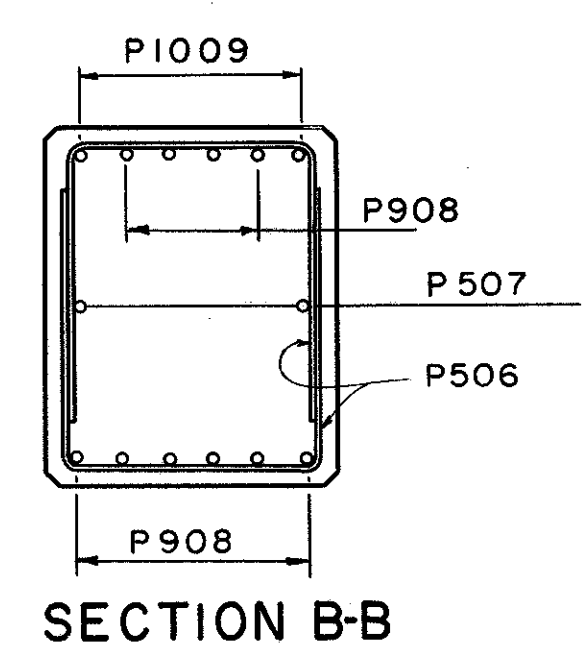
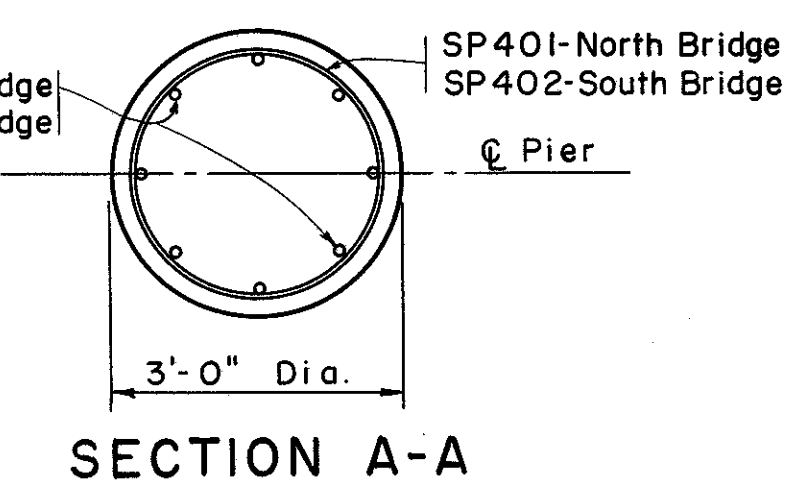
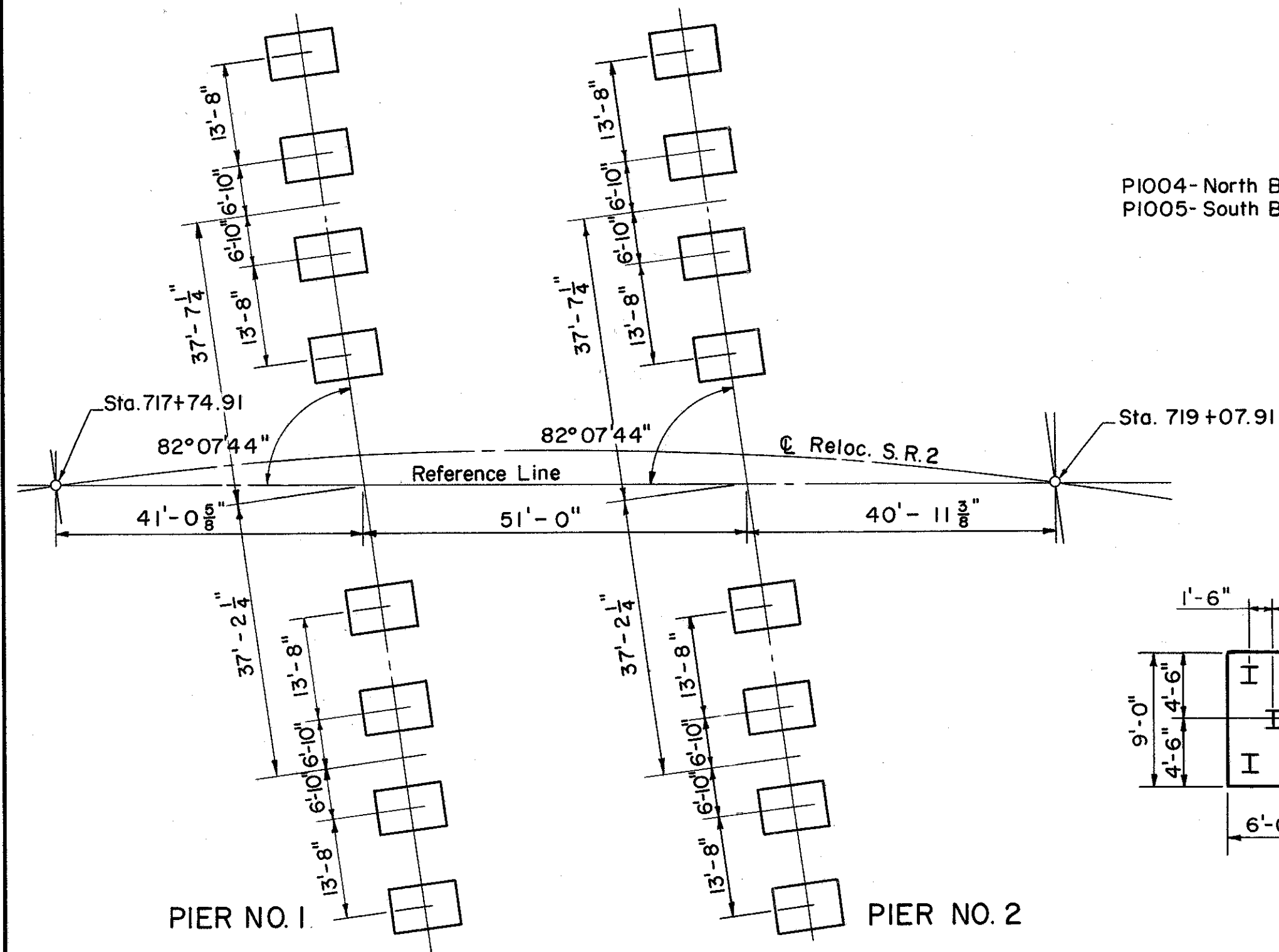


NOTES

- Special care shall be taken in placing reinforcing steel in the bridge seat so that it will not interfere with the drilling of anchor bolt holes.
- All pier caps will have the same reinforcing steel as the one shown.
- All end column footings will have the same reinforcing steel as the one shown.
- All interior column footings will have the same reinforcing steel as the one shown.
- Where two elevations or dimensions are shown, those above the line are for Pier No. 1 and those shown below the line in parenthesis are for Pier No. 2.
- All columns for both piers of the North Bridge have the same reinforcing steel.
- All columns for both piers of the South Bridge have the same reinforcing steel.



TYPICAL PIER ELEVATION



PREPARED BY CAPITOL ENGINEERING ASSOCIATES, DILLSBURG, PA. FOR					
STATE OF OHIO DEPARTMENT OF HIGHWAYS DIVISION OF DESIGN AND CONSTRUCTION BUREAU OF BRIDGES					
PIERS BRIDGE NO. LAK-2-1548 L&R RELOC. S.R.2 OVER STATE STREET LAKE COUNTY					
STA. 718 + 41.40					
DESIGNED	DRAWN	TRACED	CHECKED	REVIEWED	DATE
J.P.M.	J.P.M.	R.L.F.	M.C.L.		2-3-60