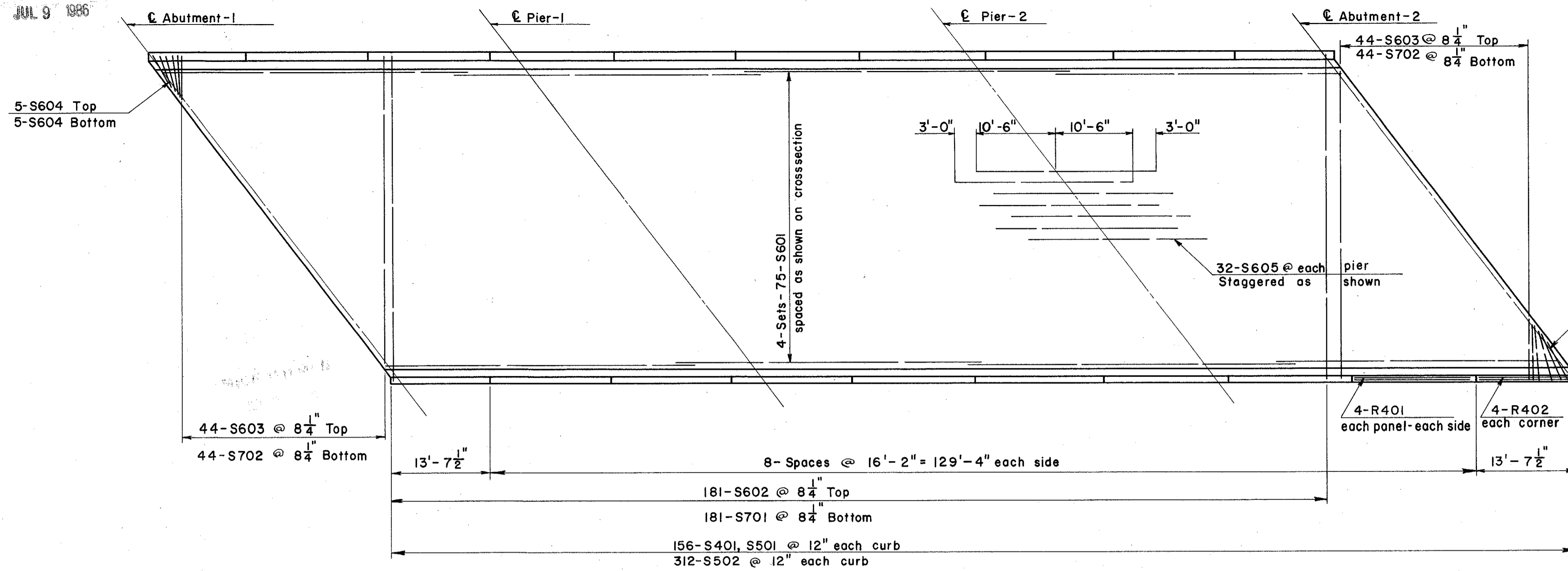


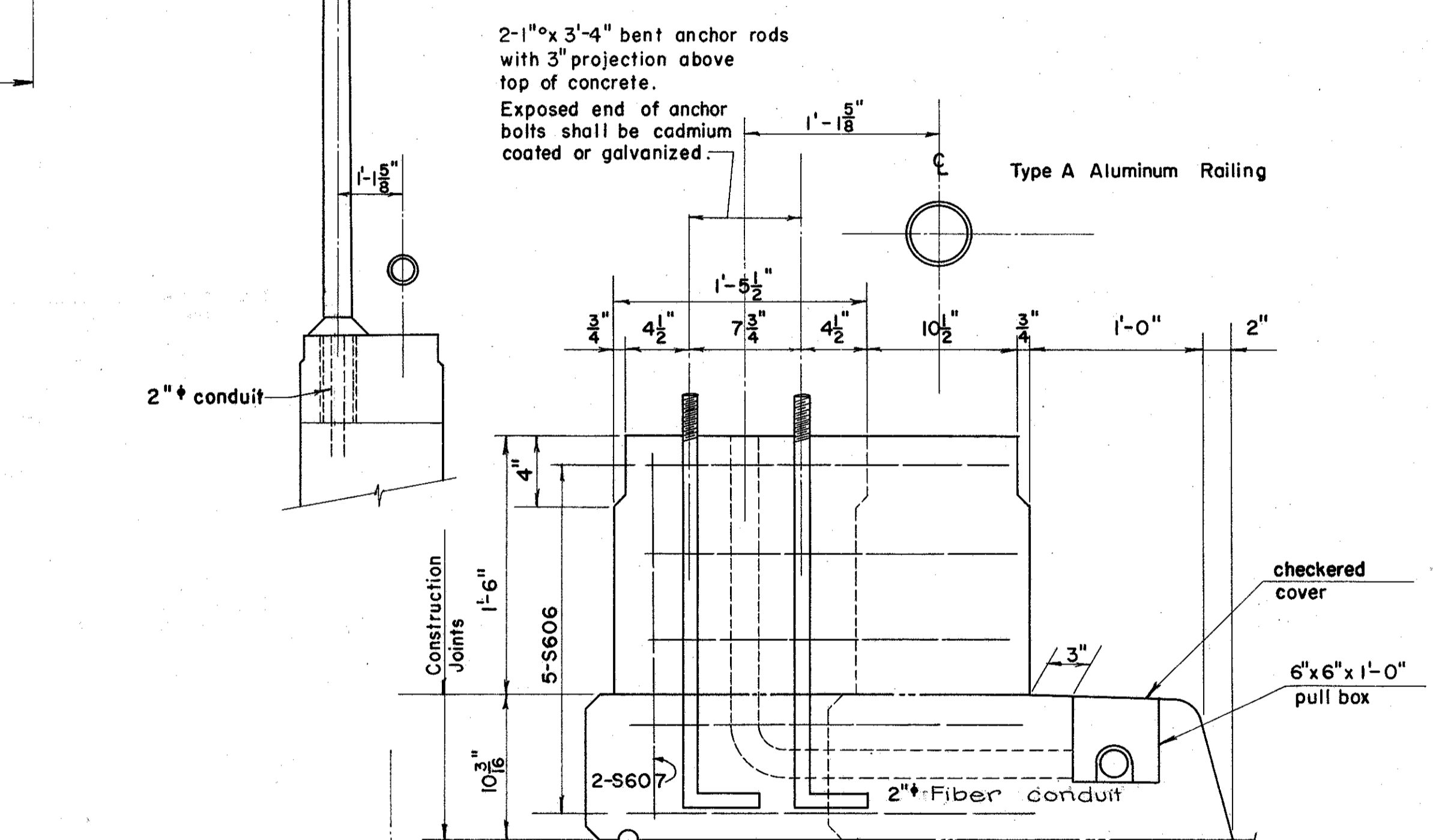
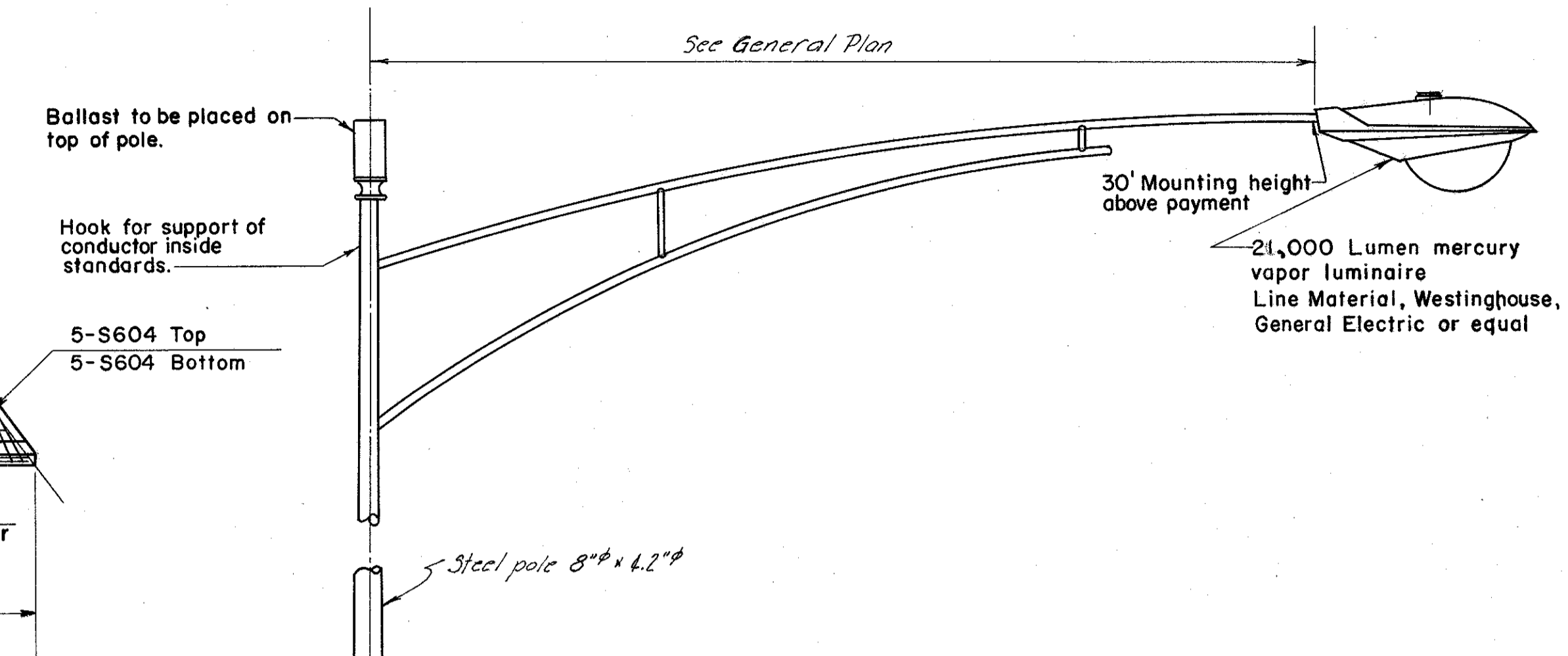
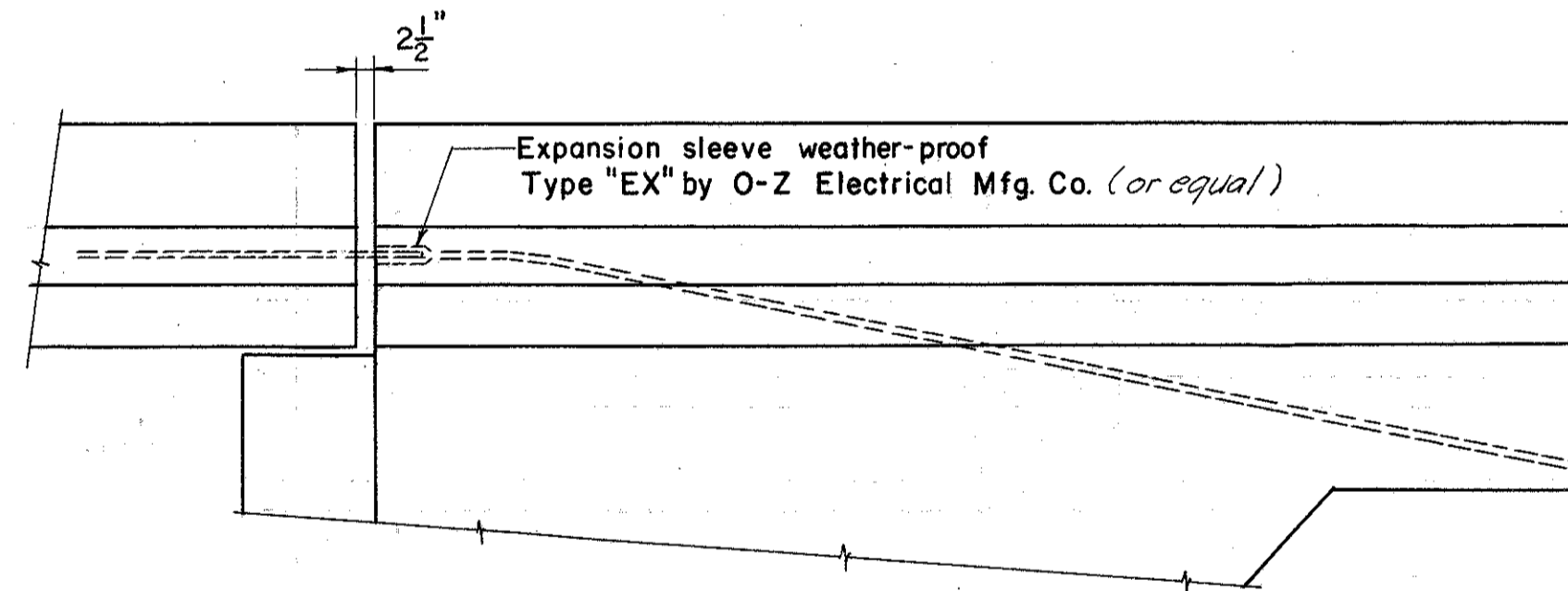
MICROFILMED
JUL 9 1986

FED. RD. DIVISION	STATE	PROJECT	329 384
2	OHIO		

LAKE COUNTY
SEC. LAK-2-1422



SLAB REINFORCEMENT
South Bridge



ELECTRICAL GROUNDS: A stranded No. 0 gage bare copper wire electrical ground shall be imbedded in the outside column on each side of the structure at Piers 2&4. The lower ends of the wires shall be braced to the steel H-piles and the upper ends shall extend sufficiently above the top of the concrete to provide for a suitable splice and extension for connection to the superstructure. The connection to the superstructure shall be a No. 6 gage, bare, stranded, tinned copper wire brazed or bolted to a girder flange and to the stranded copper wire in the pier shaft. At the base of the lamp standards there shall be a tinned No. 6 gage copper wire brazed to one anchor bolt and the other end brazed or bolted to the outside girder flange. Payment for electrical grounds is included in the lump sum bid for Item S-25, Electric Lighting System.

For Roadway Lighting details not shown see Roadway Lighting Plans Sheet No. 271.

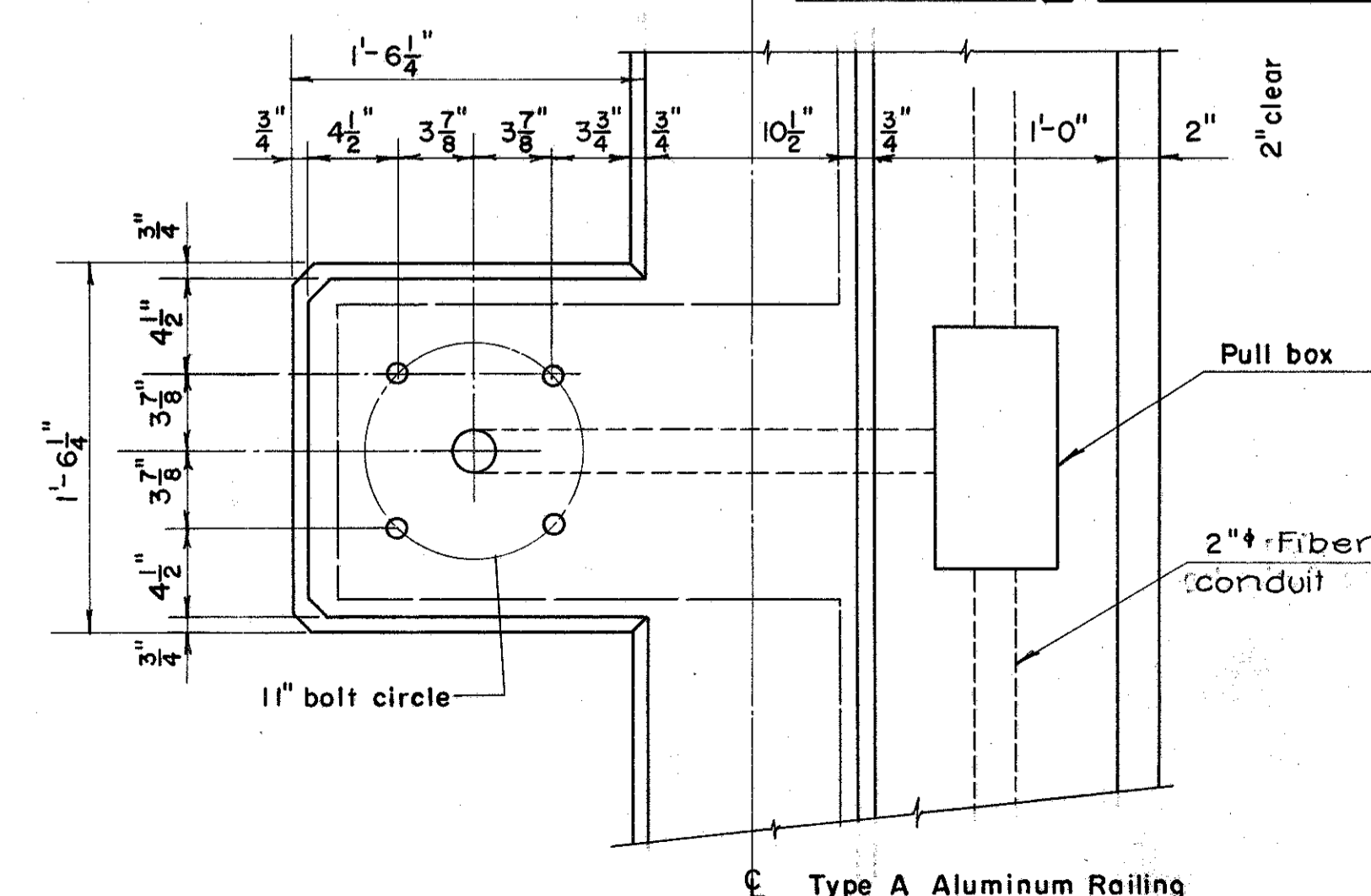
FIRST TEST PILE: Payment will be made for only one first test pile. It may be driven for either the Left or Right bridge.

2" Rigid galvanized conduit shall extend full length of bridge.

* 100% city participation

Item S-25 Electric Lighting System includes all standards, grounds, pull boxes and anchor bolts.

ITEM	TOTAL	UNIT	DESCRIPTION	NORTH BRIDGE				SOUTH BRIDGE				As Bld	Built
				SUPER	ABUT.	PIER	GEN'L	SUPER	ABUT.	PIER	GEN'L		
E-2	944	Cu. Yds.	Unclassified Excavation		312	180			312	190			1074
S-1	440	Cu. Yds.	Class-C Concrete, Superstructure	220				220					420
S-1	158	Cu. Yds.	Class-C Concrete, Pier Caps & Columns			79				79			147
S-1	332	Cu. Yds.	Class-E Concrete, Footings		94	66			94	78			
S-1	218	Cu. Yds.	Class-E Concrete, Abutments above Footings		109				109				211
S-4	195,627	Lbs.	Reinforcing Steel	58,842	16,076	21,045		58,842	16,076	24,746			
S-7	352,000	Lbs.	Structural Steel	176,000				176,000					
S-8	352,000	Lbs.	Field Painting of Structural Steel	176,000				176,000					
S-14	724	Lin. Ft.	Railing (Aluminum Rail & Supports & Concrete Parapet)	312	50			312	50				
S-25	206	Lin. Ft.	Wiring *	100	15			80	11				
S-16	Lump	Lump Sum	First Test Pile				Lump				Lump		
S-18	5820	Lin. Ft.	Piles (12BP53) Steel, as per plan		1710	1200			1710	1200			4341
S-29	24	Each	Scuppers	12				12					
S-29	52	Cu. Yds.	Porous Backfill		26				26				
I-10	1654	Sq. Yds.	Concrete Slope Protection		827				827				1339
S-25	Lump	Sum	Electric Lighting System				Lump				Lump		
S-25	362	Lin. Ft.	Electric Conduit for Lighting	156	25			156	25				
S-25	2	Each	Luminaires including Ballasts*		1				1				



LIGHTING DETAILS

PREPARED BY
CAPITOL ENGINEERING ASSOCIATES, DILLSBURG, PA.
FOR
STATE OF OHIO
DEPARTMENT OF HIGHWAYS
DIVISION OF DESIGN AND CONSTRUCTION
BUREAU OF BRIDGES

SLAB DETAILS & QUANTITIES
BRIDGE NO. LAK-2-1512 L & R
RELOC. S. R. 2 OVER SANFORD STREET
LAKE COUNTY
STA. 699 + 08.63

DESIGNED	DRAWN	TRACED	CHECKED	REVIEWED DATE	REVISED
H.D.	R.C.	J.D.M.	M.C.		