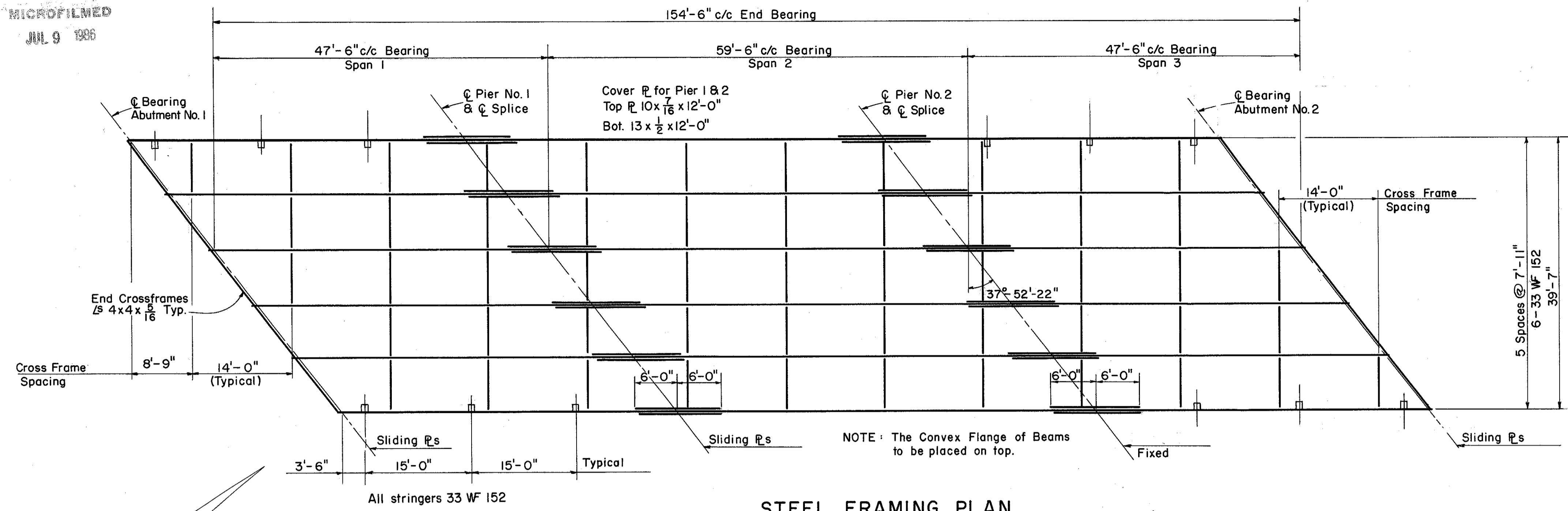


MICROFILMED
JUL 9 1986

FED. RD. DIVISION	STATE	PROJECT	328 384
2	OHIO		

LAKE COUNTY
SEC. LAK-2-14.22



STEEL FRAMING PLAN
SOUTH BRIDGE - NORTH SIMILAR BY ROTATION

- * 8 3/4" Abutment No. 1.
- 8 1/16" Pier No. 1.
- 8 1/16" Pier No. 2.
- 8 3/4" Abutment No. 2.

NOTES

REFERENCE shall be made to Standard Drawing CSB-2-56 sheets 2 & 3 of 6 revised 2-2-59 for details of gutters, Scuppers pipe drains, curb plates, bearing plates & end crossframes.

REFERENCE shall be made to Standard Drawing AR-1-57 revised 2-2-59 for details of Aluminum railing Type "A" and concrete parapet details.

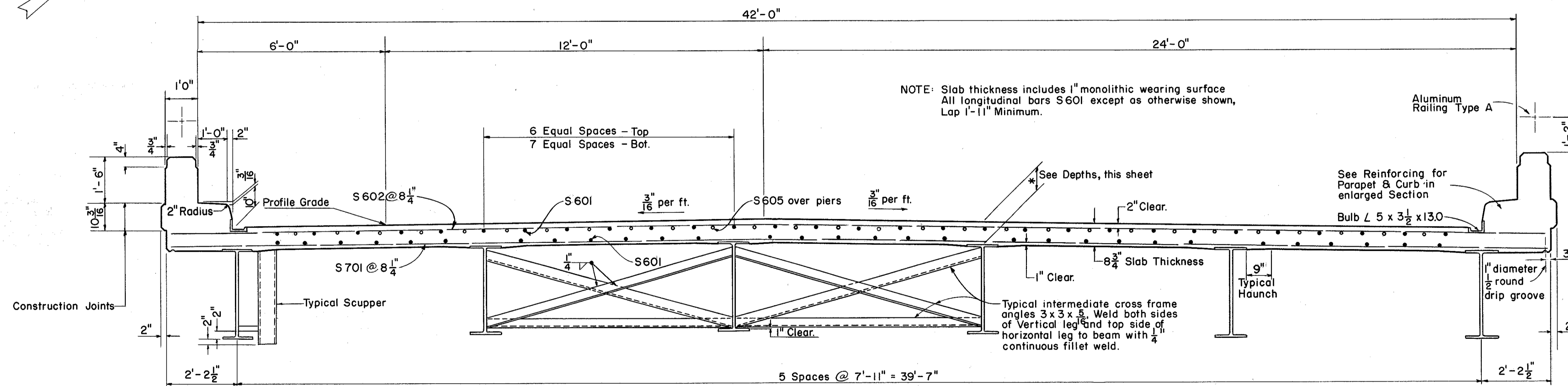
WELDING of structural steel shall be Class "A" except as otherwise shown. Welds shown as field welds may at the option of the Contractor, be made in the shop.

*DECK SLAB DEPTH: This is a nominal dimension. The quantity of deck concrete to be paid for shall be based on this dimension even though deviation from it may be necessary because the top flange of the beam may not have the exact camber or conformation required to place it parallel to the finished grade.

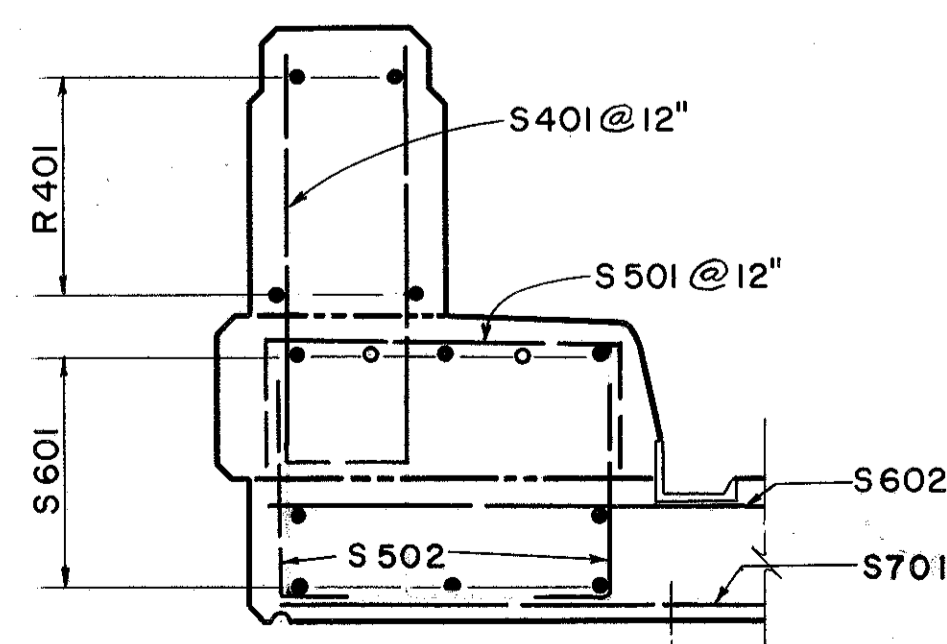
CONCRETE DECK PLACING: In order to facilitate water curing of the concrete of the deck slab. The placing of concrete shall progress upgrade. The slab may be placed in sections between transverse construction joints which are parallel to transverse reinforcing steel and are located near the center of any span.

BEAM SPLICE WELDING PROCEDURE:
1. Raise the abutment ends of the beams the tabulated amount (R) 3/4"
2. Butt-weld the beam flanges and web, using the following sequence: make two passes on each flange, then two on the web, repeat, using one pass at each location until welds are complete.
3. Weld the bottom and top moment plates.
4. Lower the beam ends to final position.

REINFORCING STEEL shall have 2" of cover from all faces except as otherwise shown.



TYPICAL SECTION SOUTH BRIDGE (LOOKING AHEAD)
NORTH BRIDGE SIMILAR BY ROTATION
ALL DETAILS ON TYPICAL SECTION SOME FOR BOTH BRIDGES



ENLARGED PARAPET & CURB SECTION

DEFLECTION			
	SPAN 1	SPAN 2	SPAN 3
Sum of Deflection	1/8"	1/4"	1/8"

PREPARED BY CAPITOL ENGINEERING ASSOCIATES, DILLSBURG, PA. FOR					
STATE OF OHIO DEPARTMENT OF HIGHWAYS DIVISION OF DESIGN AND CONSTRUCTION BUREAU OF BRIDGES					
SUPERSTRUCTURE DETAILS BRIDGE NO. LAK-2-1512 L & R RELOC. S. R. 2 OVER SANFORD STREET LAKE COUNTY STA. 699+08.63					
DESIGNED	DRAWN	TRACED	CHECKED	REVIEWED DATE	REVISED
HED	RE		McC		