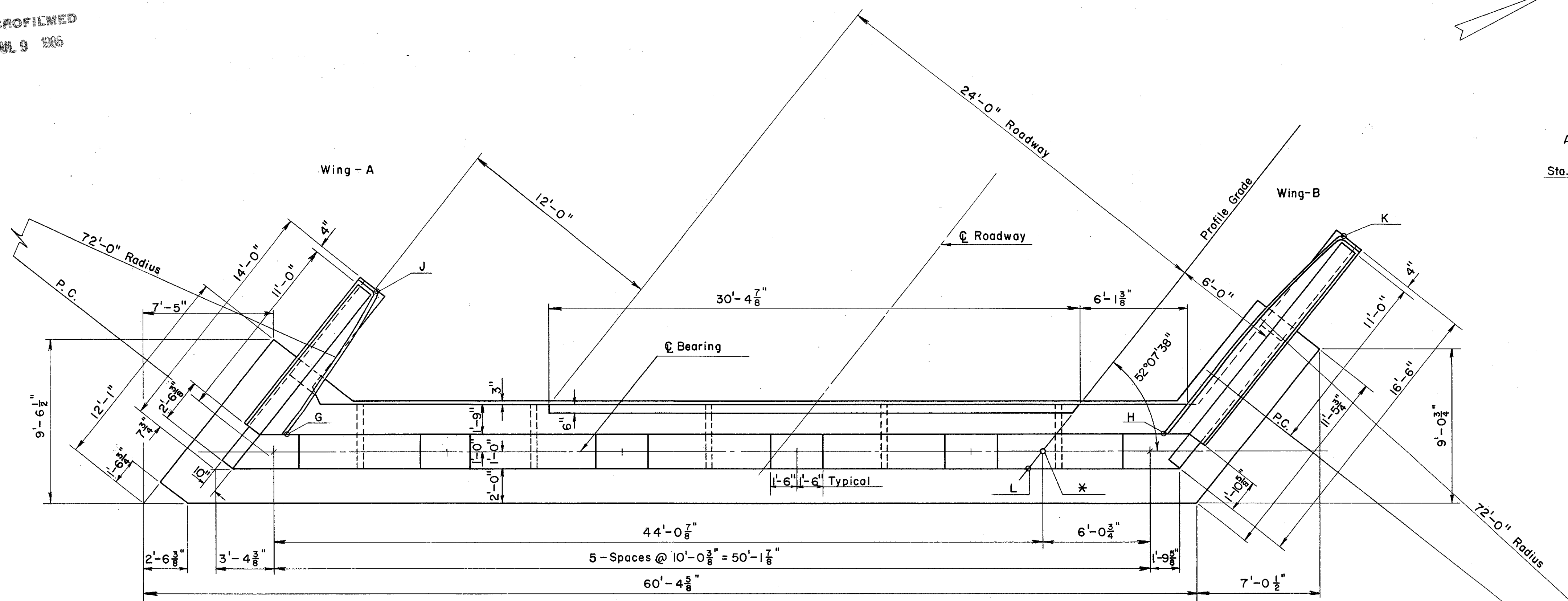
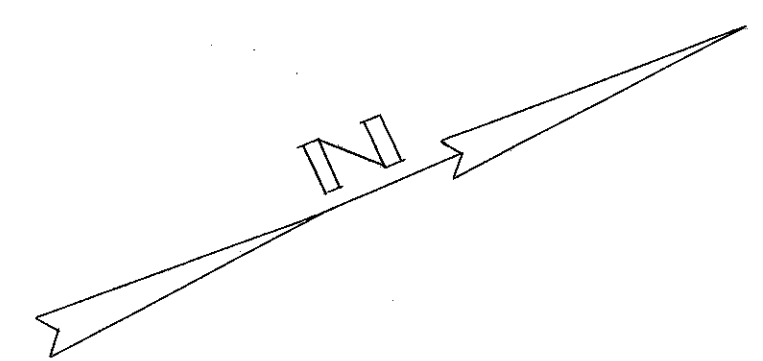


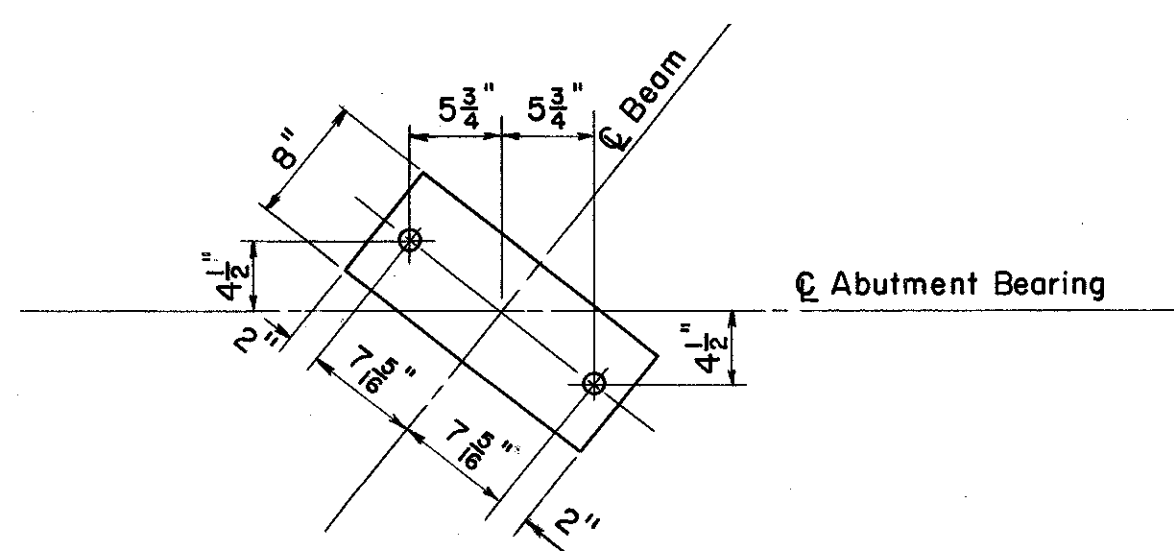
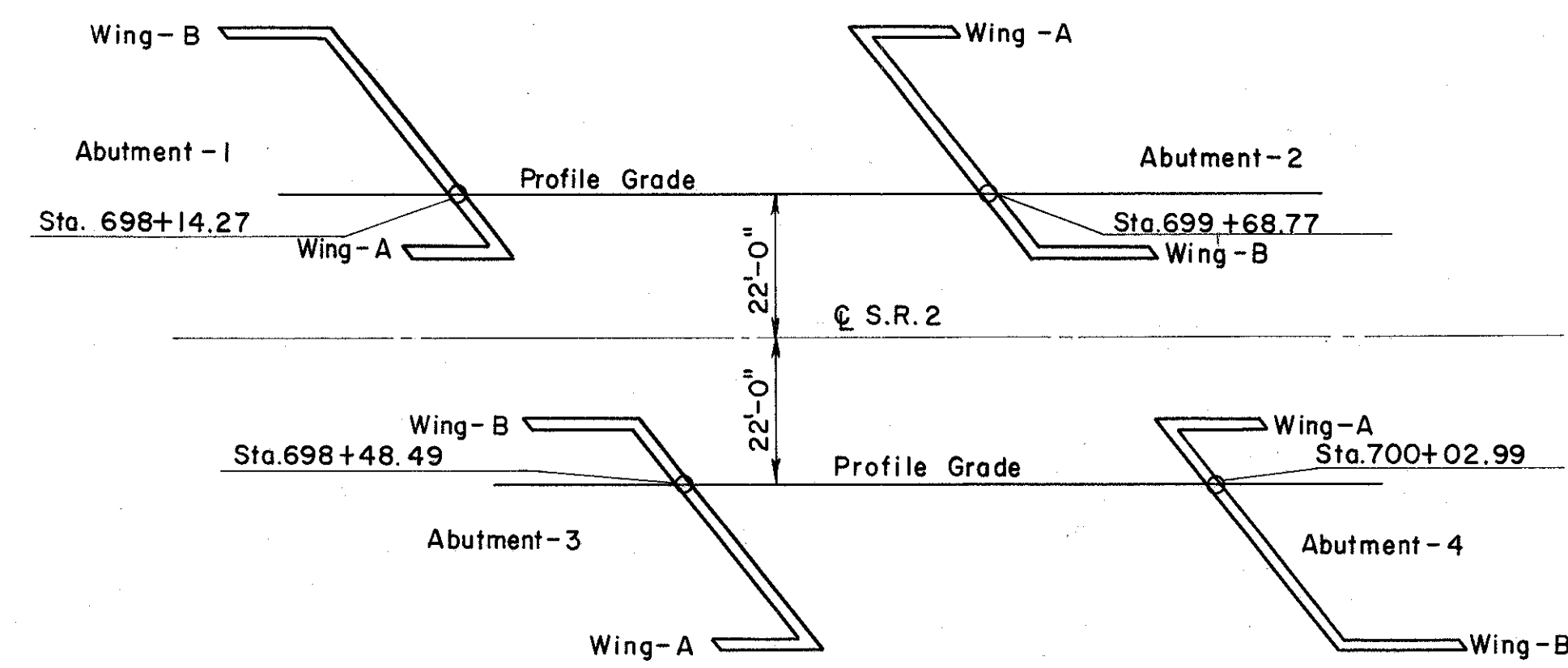
LAKE COUNTY
SEC. LAK - 2-14.22

POINT OF ELEVATION	A	B	C	D	E	F	G	H	J	K	L
Abutment - 1 * Sta. 698+14.27	645.52	645.63	645.75	645.65	645.52	645.38	649.21	649.08	649.18	649.04	649.28
Abutment - 2 * Sta. 699+68.77	645.39	645.51	645.62	645.70	645.57	645.43	649.09	649.13	649.07	649.09	649.21
Abutment - 3 * Sta. 698+48.49	645.44	645.57	645.69	645.78	645.66	645.53	649.14	649.23	649.14	649.22	649.31
Abutment - 4 * Sta. 700+02.99	645.37	645.48	645.59	645.48	645.34	645.19	649.07	648.89	649.04	648.84	649.14

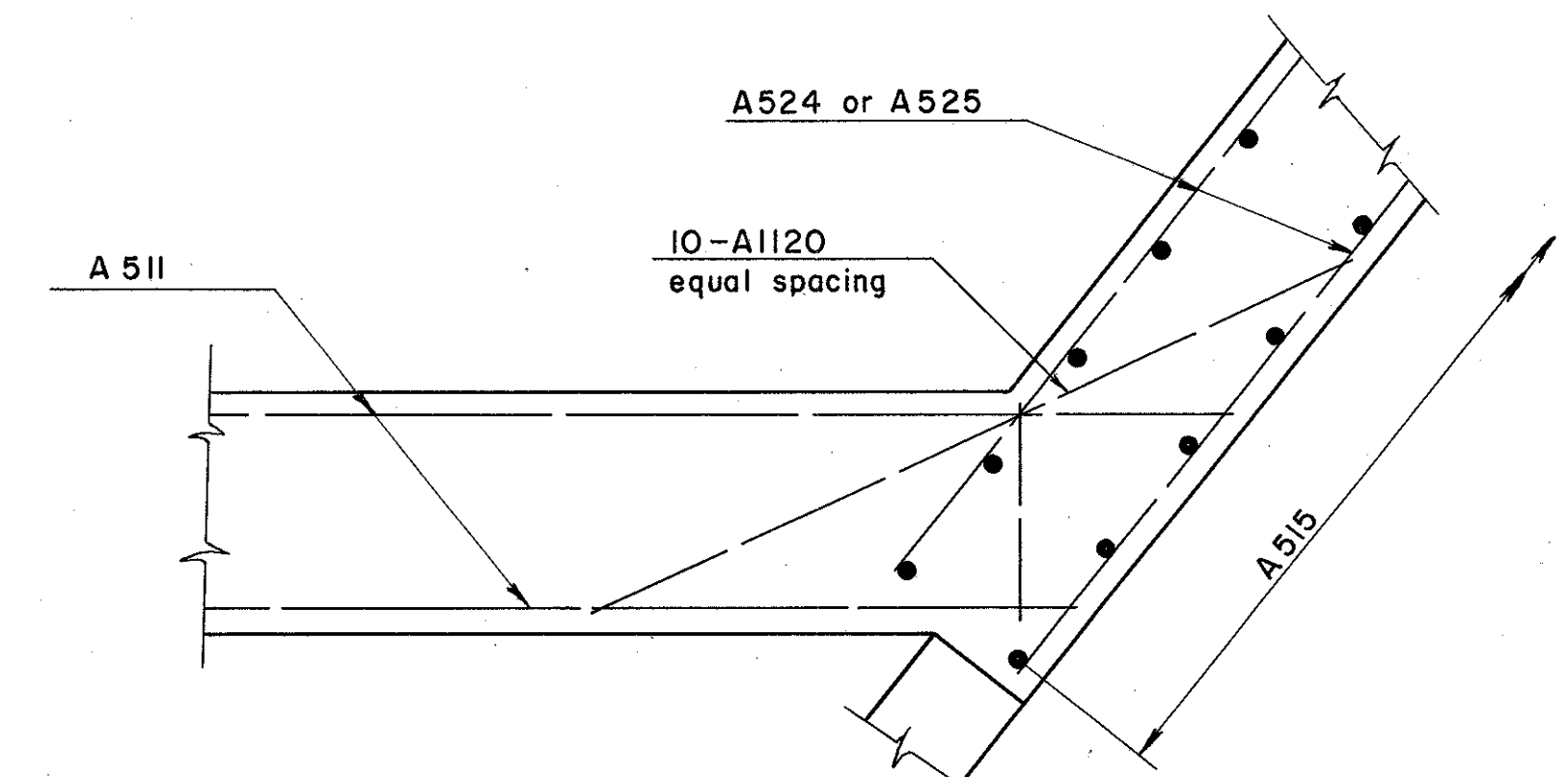
MICROFILMED
JUL 9 1985



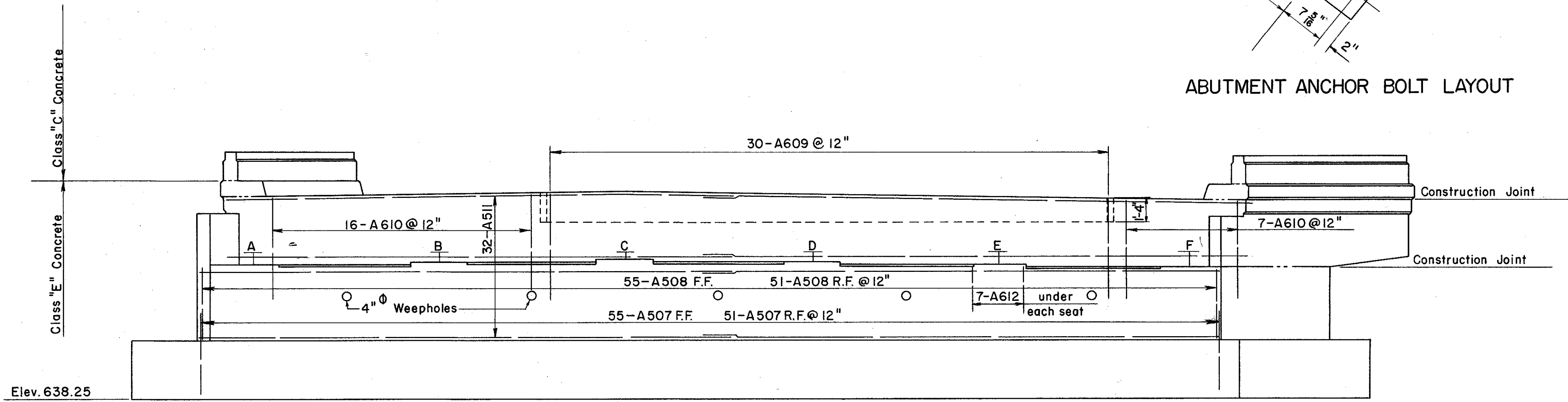
PLAN
(LOOKING BACK) ABUTMENT-3
(LOOKING AHEAD) ABUTMENT-2



ABUTMENT ANCHOR BOLT LAYOUT



CORNER WALL REINFORCEMENT



ELEVATION
PILES NOT SHOWN

F.F. Denotes front face
R.F. Denotes rear face
E.F. Denotes each face
Reinforcing steel shall have 3" of cover in the footings and 2" elsewhere.
All piles 12 BP53
Special care shall be taken in placing reinforcing steel in the bearing seats so as not to interfere with the drilling of anchor bolt holes.

PREPARED BY
CAPITOL ENGINEERING ASSOCIATES, DILLSBURG, PA.
FOR

STATE OF OHIO
DEPARTMENT OF HIGHWAYS
DIVISION OF DESIGN AND CONSTRUCTION
BUREAU OF BRIDGES

ABUTMENTS
BRIDGE NO. LAK-2-1512 L & R
RELOC. S. R. 2 OVER SANFORD STREET
LAKE COUNTY
STA. 699+08.63

DESIGNED	DRAWN	TRACED	CHECKED	REVIEWED	DATE	REVISED
N.D.	R.	J.D.M.	B.R.	M.C.C.		