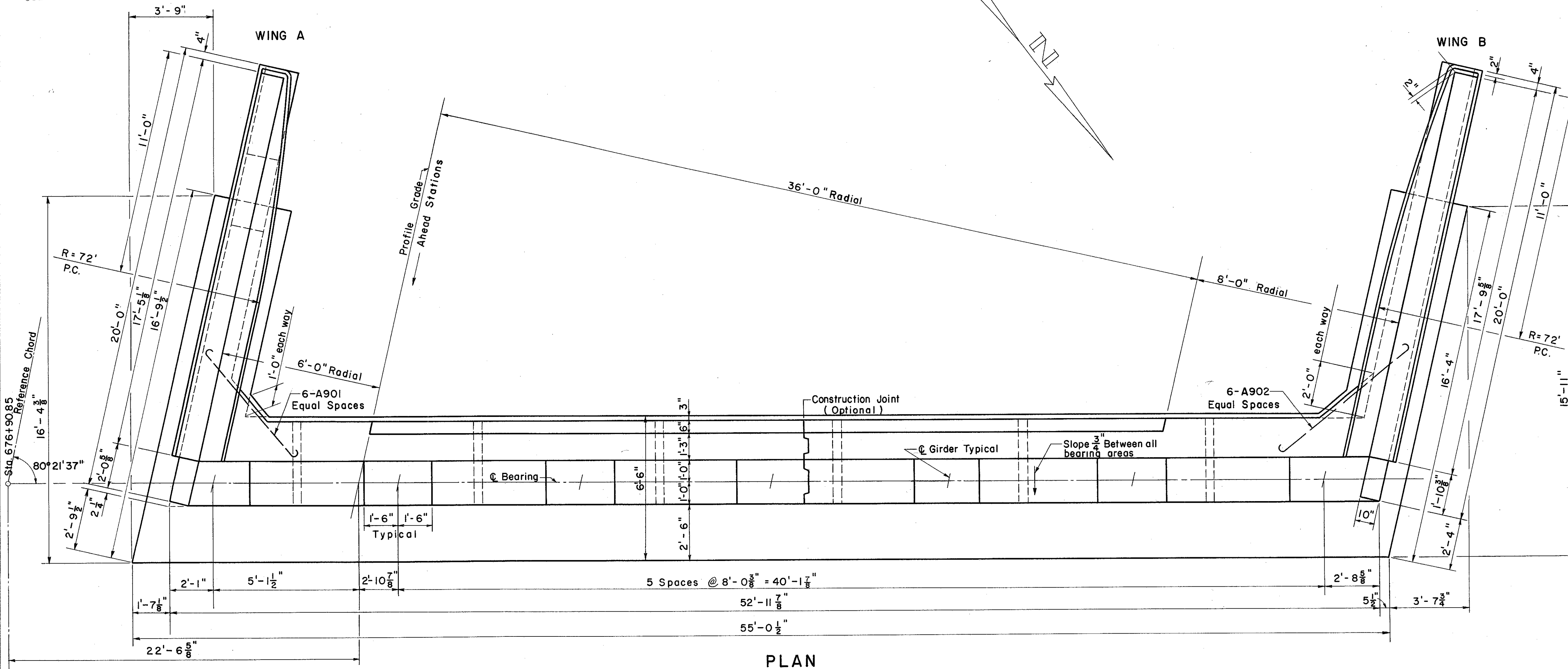


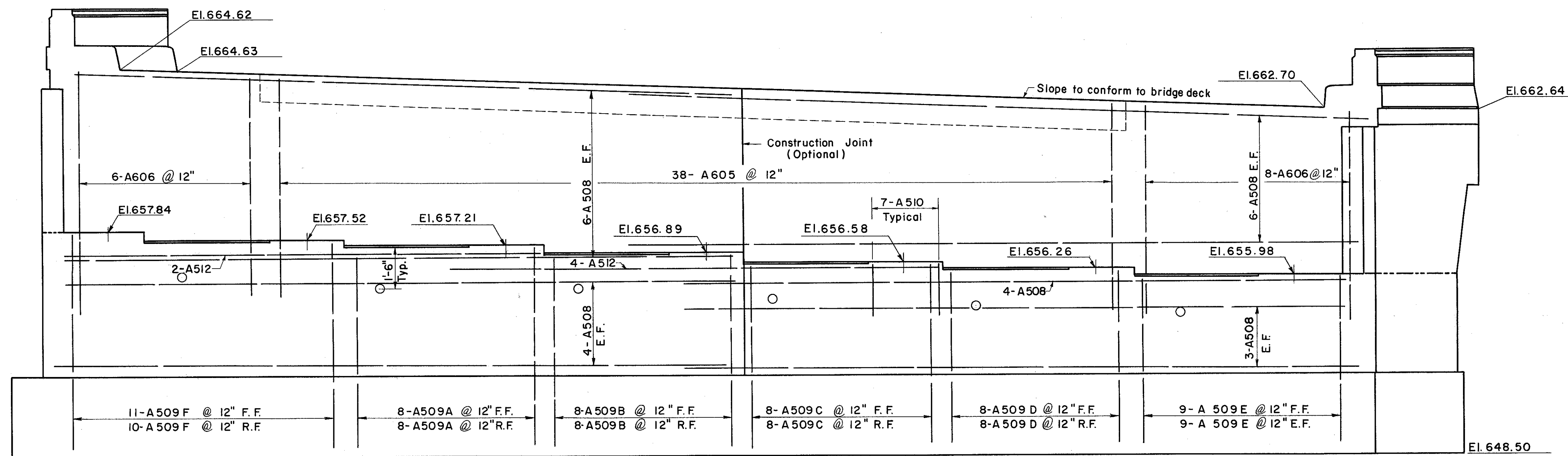
MICROFILMED
JUL 8 1986

FED. RD. DIVISION	STATE	PROJECT	300 384
2	OHIO		

LAKE COUNTY
SEC. LAK-2-14.22

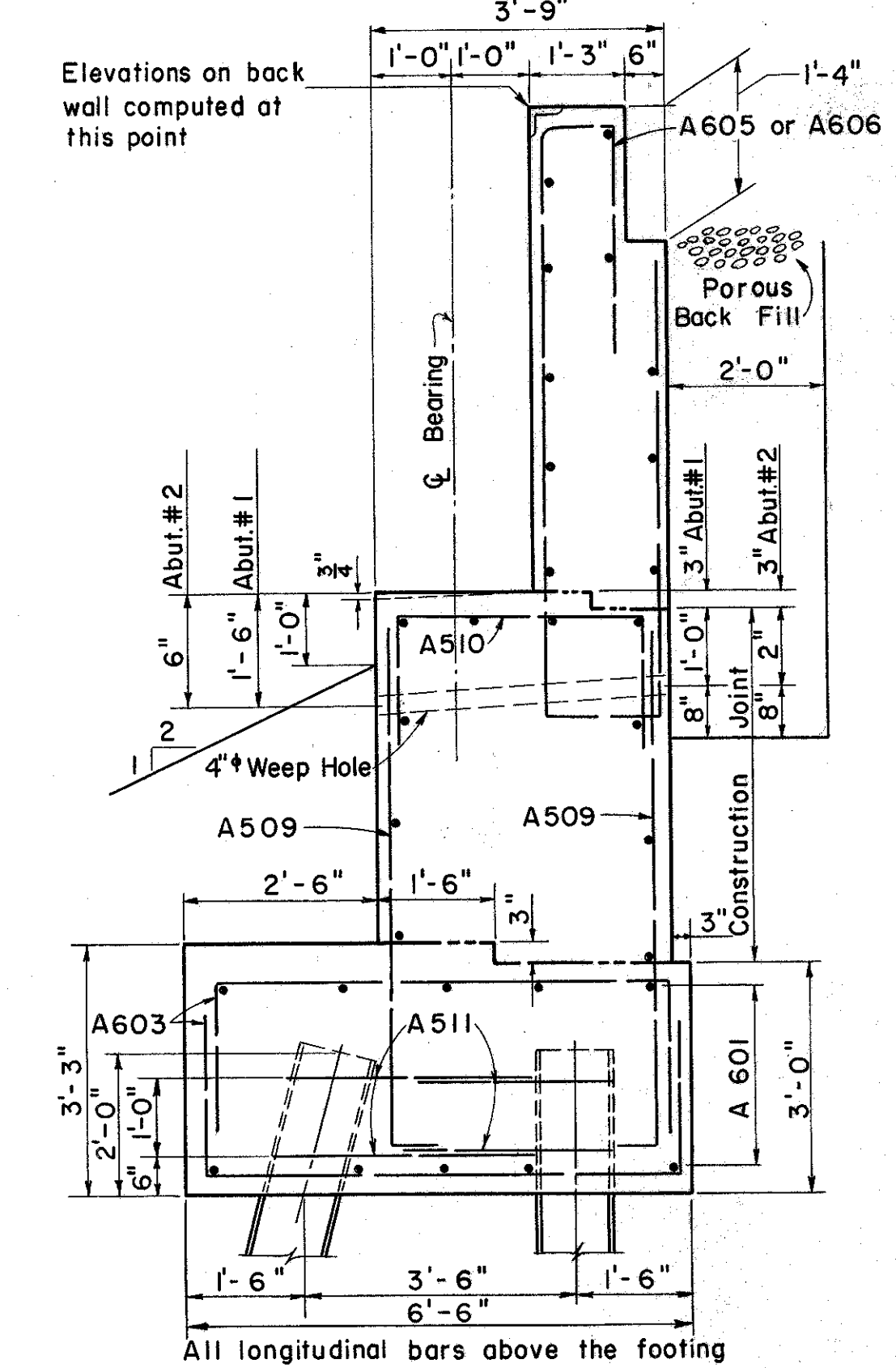


PLAN



ELEVATION

(Piles not shown,
See Abut. Details)



TYPICAL SECTION

NOTES:
All reinforcing steel shall have a minimum of 3" of cover in the bottom of footing, 2" elsewhere.
All piles I2-BP-53 driven to rock.
E.F. = Each Face
F.F. = Front Face
R.F. = Rear Face
For additional notes see "General Notes."
For Location of Conduit see Lighting Details on Approach Slab Detail Sheet.

PREPARED BY CAPITOL ENGINEERING ASSOCIATES, DILLSBURG, PA. FOR					
STATE OF OHIO DEPARTMENT OF HIGHWAYS DIVISION OF DESIGN AND CONSTRUCTION BUREAU OF BRIDGES					
ABUTMENT #1 LEFT BRIDGE BRIDGE NO. LAK-2-1471 L & R RELOC. S.R.2 OVER B.&O. R.R.-S.R.283 LAKE COUNTY STA. 680+56.97					
DESIGNED <i>McP</i>	DRAWN <i>McP</i>	TRACED <i>SM</i>	CHECKED <i>DRT</i>	REVIEWED DATE 3-24-60	REVISED