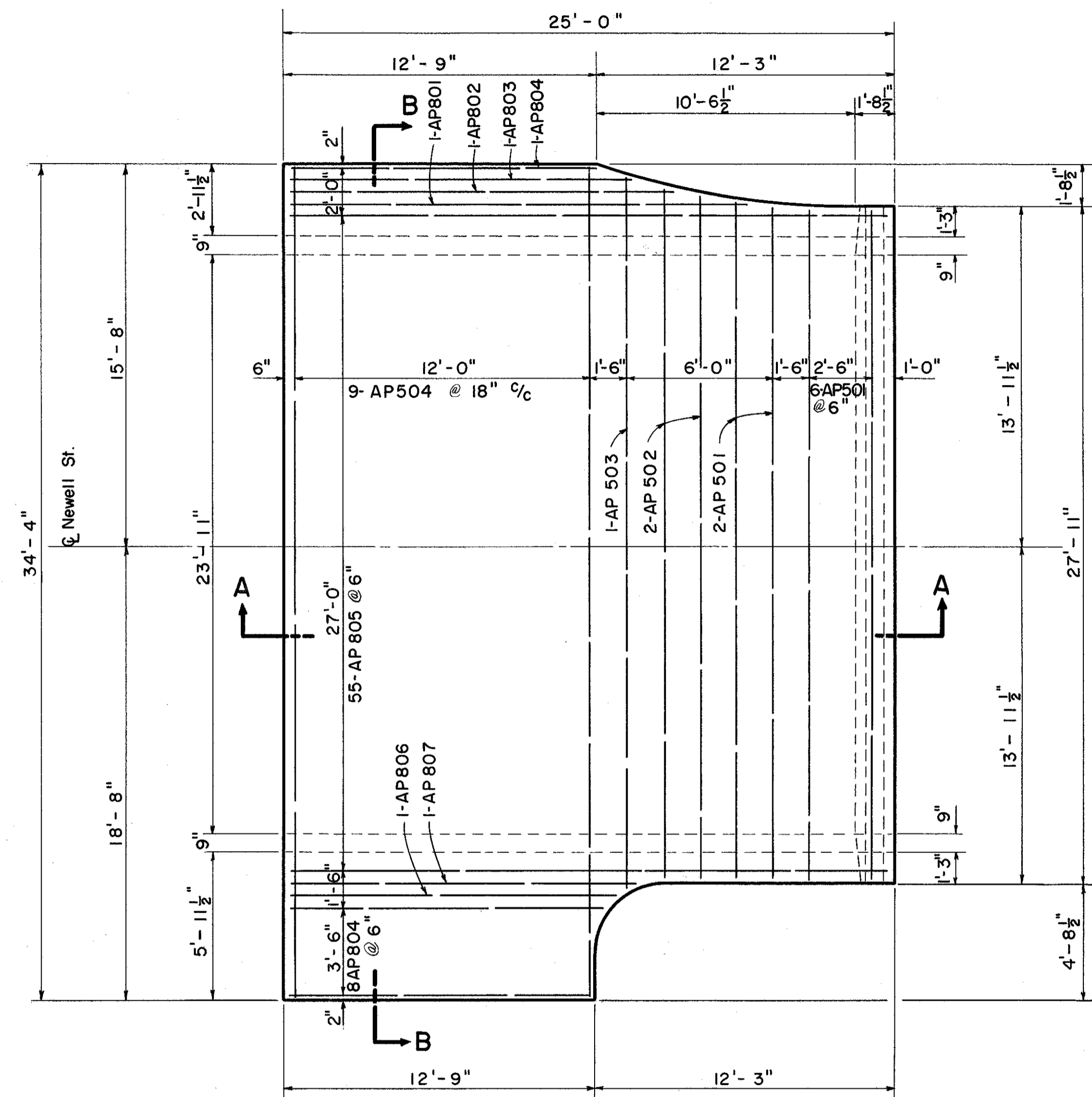


MICROFILMED
JUL 8 1986

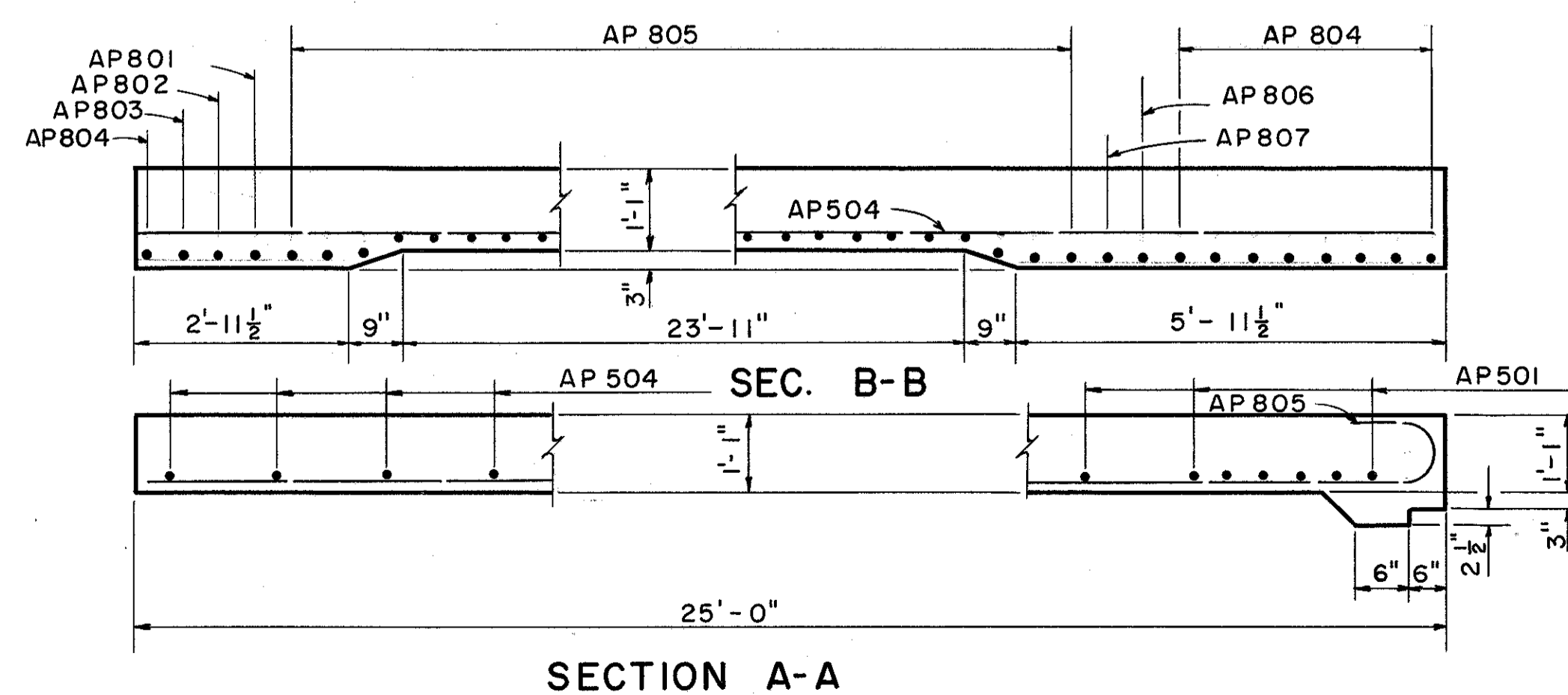
FED. RD. DIVISION	STATE	PROJECT
2	OHIO	

296
384

LAKE COUNTY
SEC. LAK-2-14.22



PLAN - APPROACH SLAB - ABUT. NO. 1 SHOWN
PLAN - APPROACH SLAB - ABUT. NO. 2 OPPOSITE



SECTION A-A

NOTES

APPROACH SLABS shall be Class "C" Concrete.
REINFORCING STEEL and premoulded expansion joint filler are included in reinforced concrete approach slab ITEM 1-7 and are not paid for separately.

PREPARED BY CAPITOL ENGINEERING ASSOCIATES, DILLSBURG, PA. FOR					
STATE OF OHIO DEPARTMENT OF HIGHWAYS DIVISION OF DESIGN AND CONSTRUCTION BUREAU OF BRIDGES					
APPROACH SLAB BRIDGE NO. LAK-2-1424 RELOC. S.R. 2 UNDER NEWELL ST. LAKE COUNTY STA. 651 + 99.35					
DESIGNED G.M.P.	DRAWN C.L.S.	TRACED L.G.L.	CHECKED L.P. McC.	REVIEWED DATE	REVISED