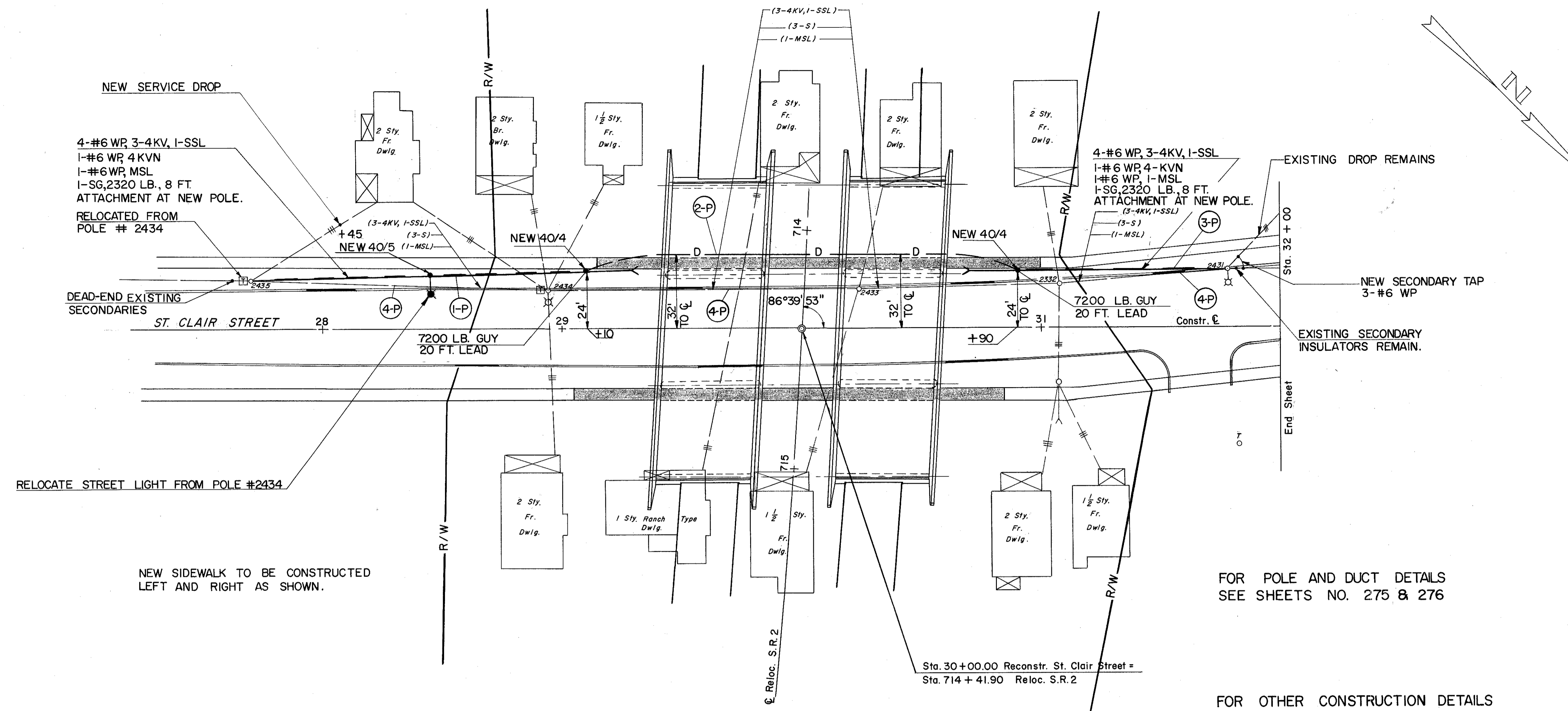


LAKE COUNTY
LAK-2-1422

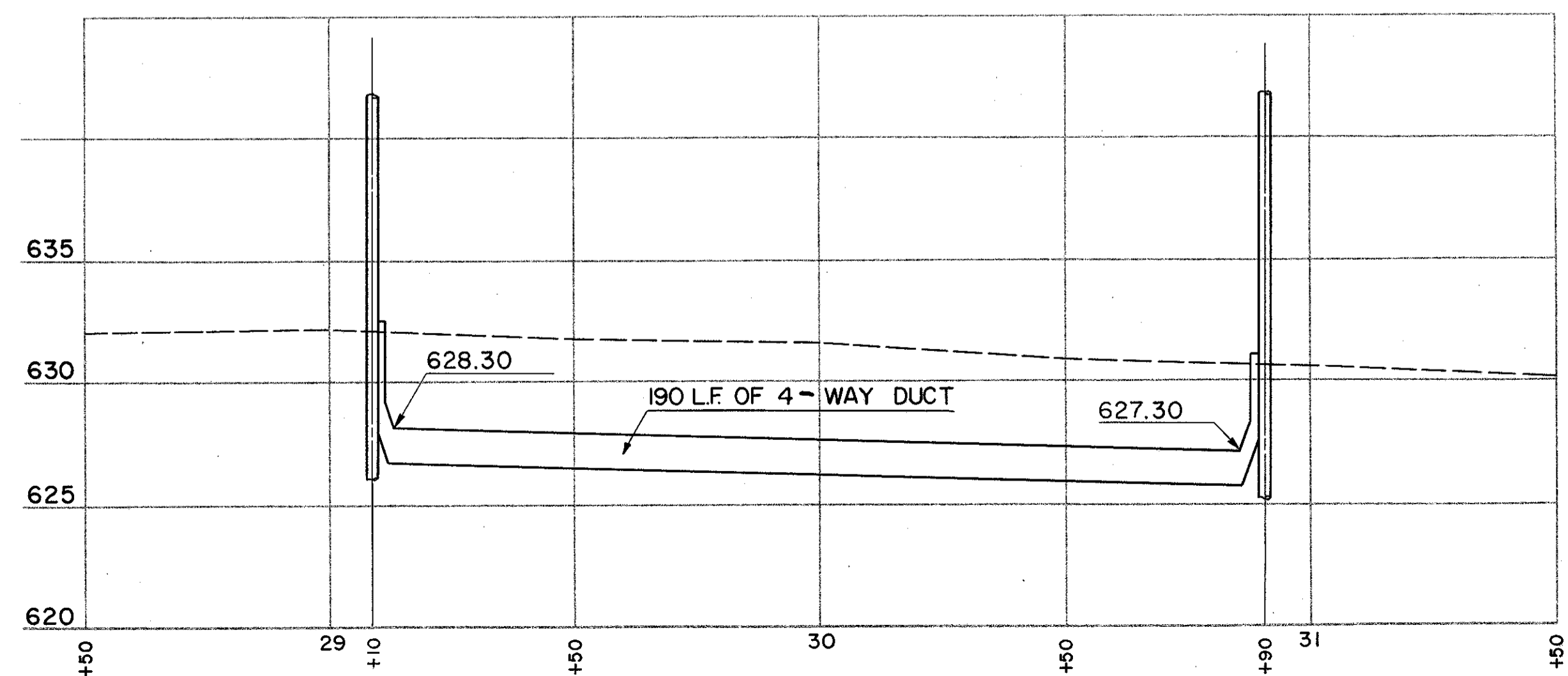
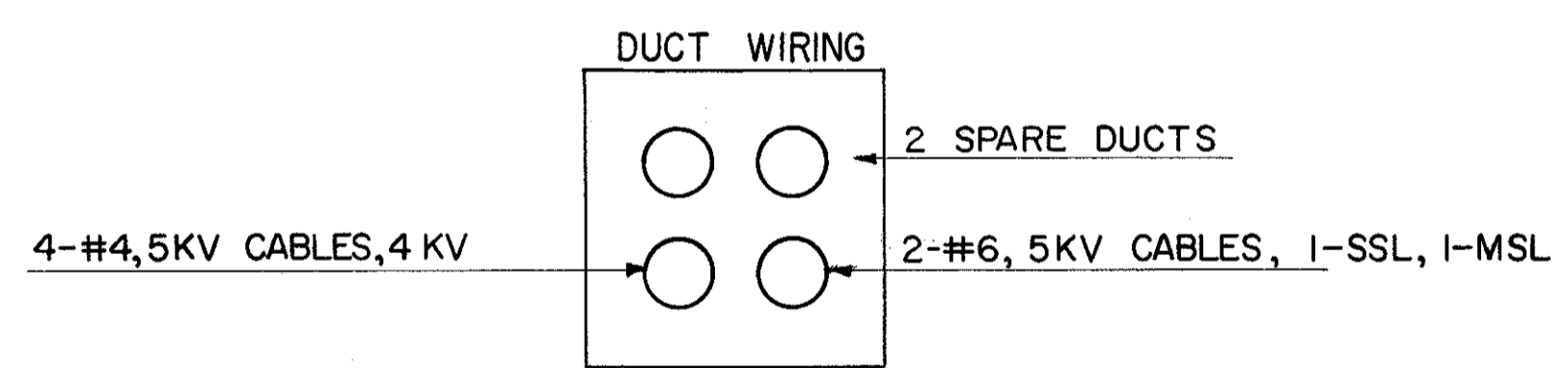


RELOCATE STREET LIGHT FROM POLE #2434

NEW SIDEWALK TO BE CONSTRUCTED LEFT AND RIGHT AS SHOWN.

FOR POLE AND DUCT DETAILS SEE SHEETS NO. 275 & 276

FOR OTHER CONSTRUCTION DETAILS SEE SHEET NO. 230



PROFILE ALONG ϕ OF NEW DUCT

(P) POWER

REF. NO.	STATION	S I D E		POLE CLASS	CROSS ARM	GUYS ANCHORS	INSULATOR DEAD END	DEAD END BRACKET	1/C CABLE	WIRE	FUSED CUTOFF	REMOVE POLE	LIGHTNING ARRESTOR	GROUND PLATE ASSEMBLY	RELOCATE STREET LIGHT	REMOVE EXISTING TRANSFORMER	INSTALL EXISTING TRANSFORMER	ALUMINUM ELL CONDUIT	ALUMINUM CONDUIT	4-WAY CONC. DUCT		
		FROM	TO																		L.F.	L.F.
1-P	27 + 70	29 + 10	LT	4	3	1	75	4	9	65	870	3									190	
2-P	29 + 10	30 + 90	LT	4	2	1	88	4	5	880	440	3									200	
3-P	30 + 90	31 + 77	LT	4	2	1	163	8	14	880	440	6	4								190	
4-P	27 + 70	31 + 77	LT	2	5	2	163	8	14	65	1420	4	6	2							200	
	TOTAL																					

POWER ADJUSTMENTS
ST. CLAIR STREET