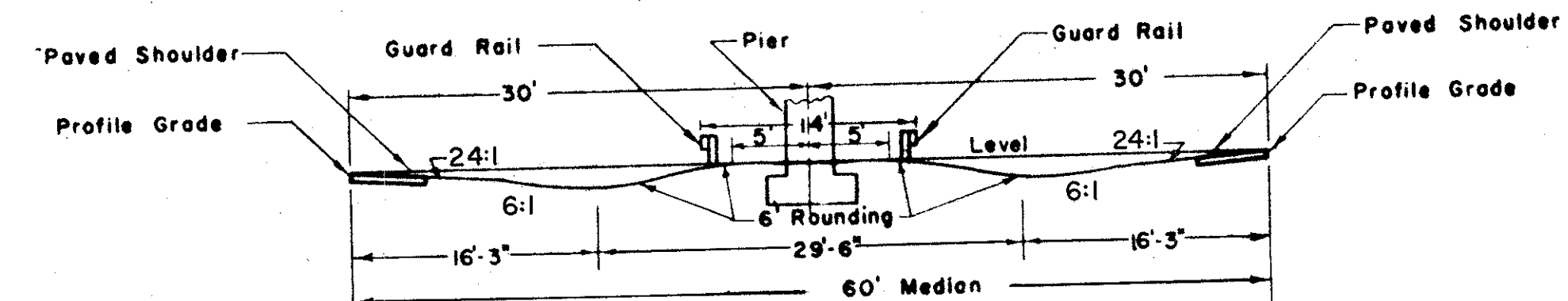
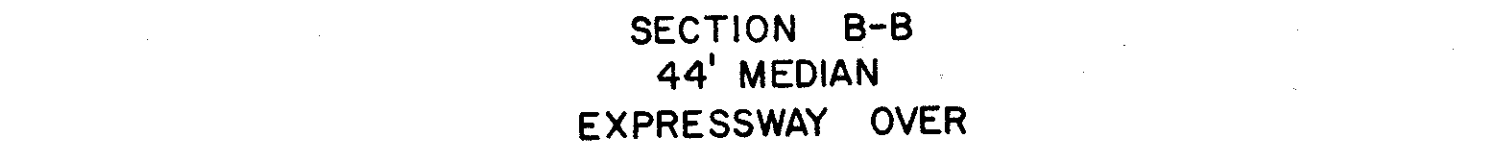
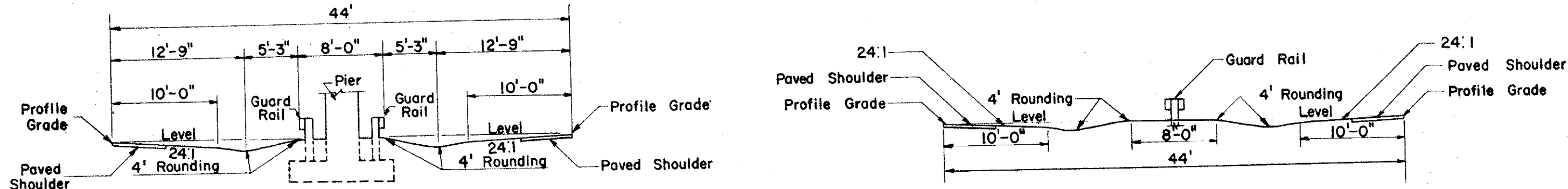
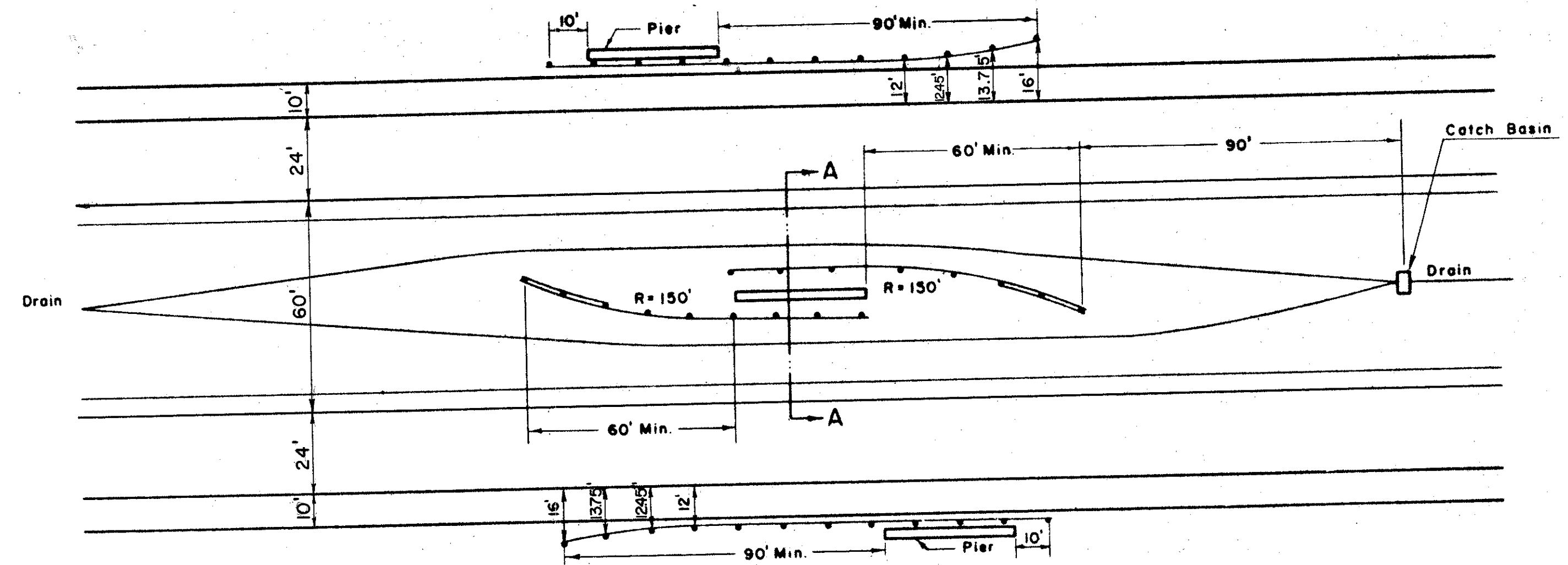
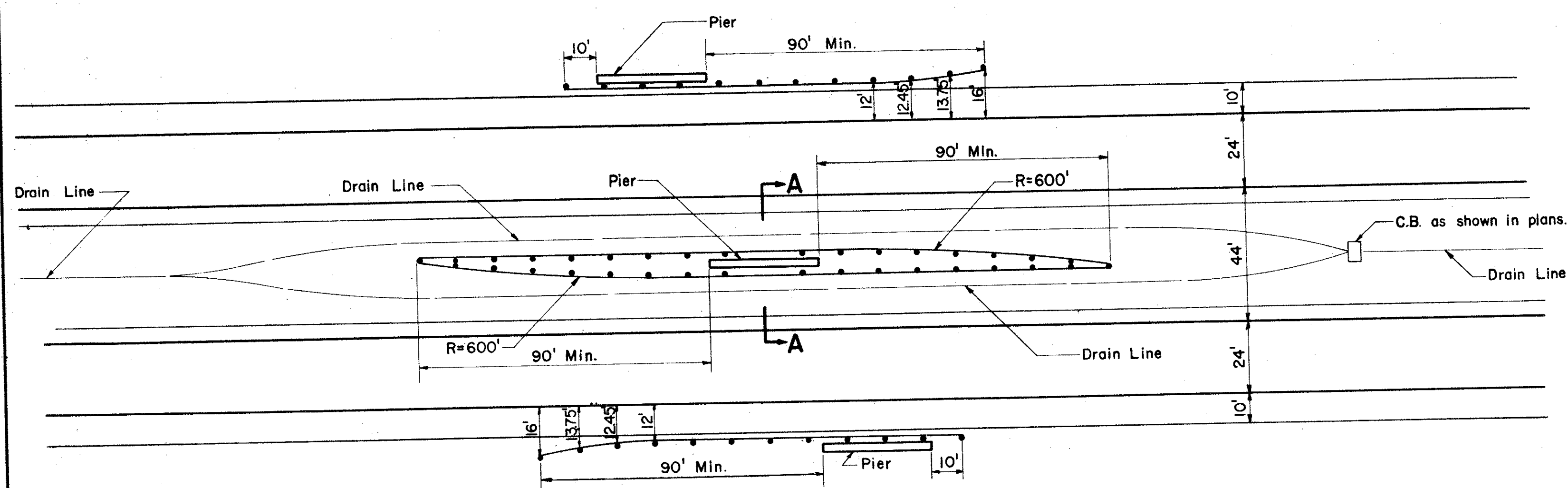


PIER PROTECTION

FED. RD. DIVISION	STATE	PROJECT
2	OHIO	

270
384

LAKE COUNTY
LAK-2-14.22

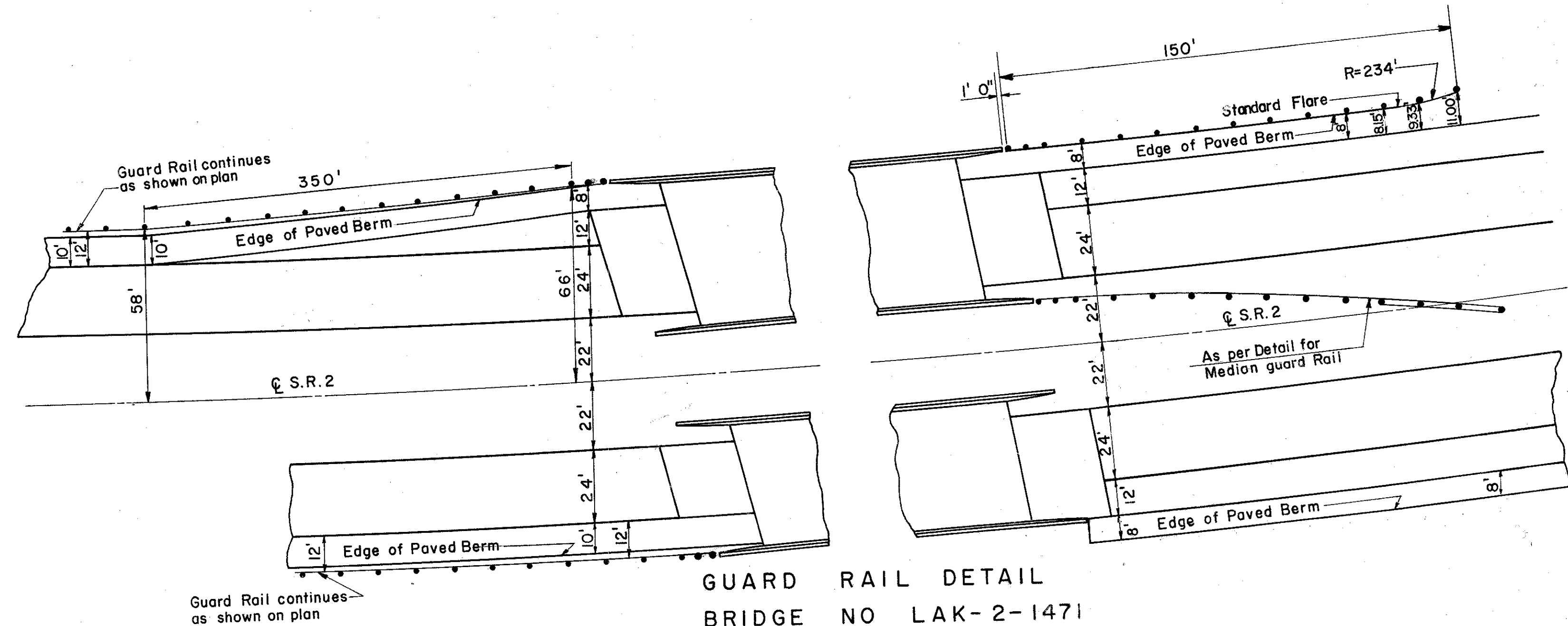
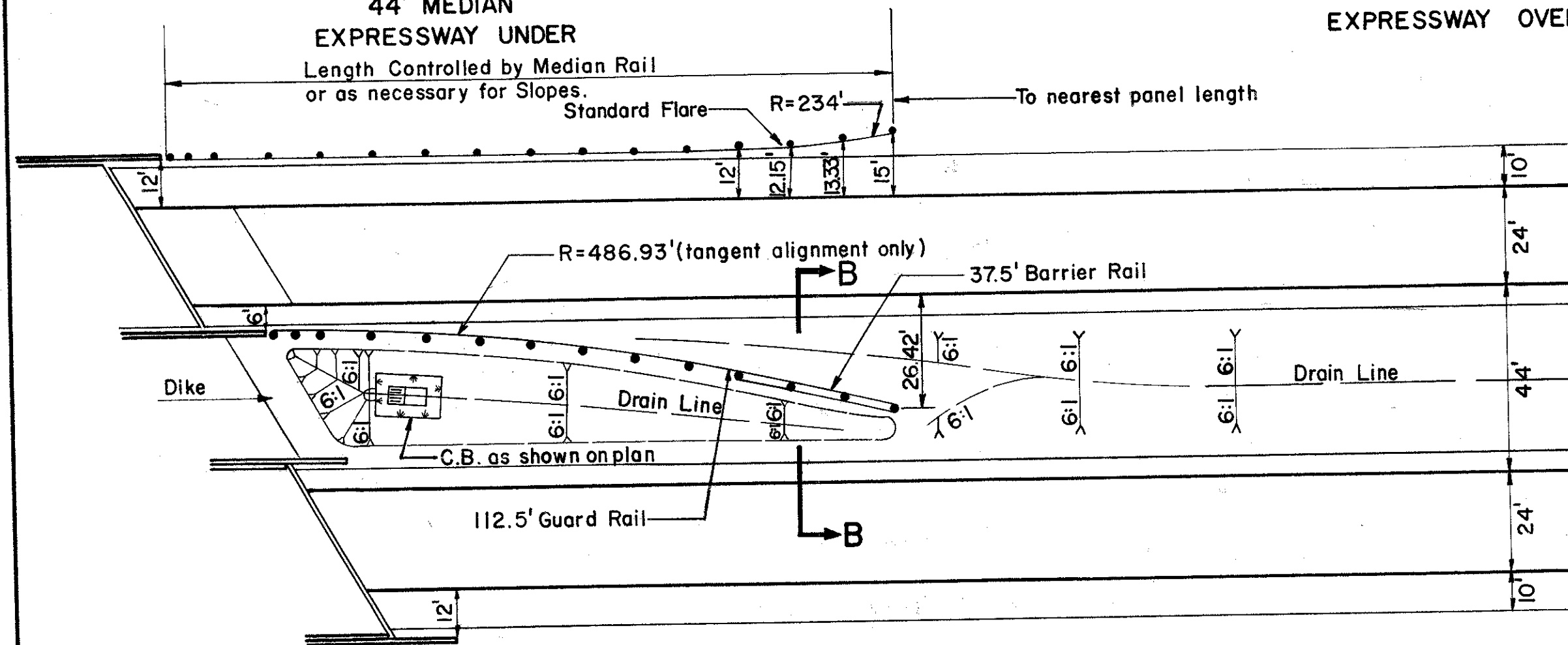


SECTION A-A
44' MEDIAN
EXPRESSWAY UNDER

SECTION B-B
44' MEDIAN
EXPRESSWAY OVER

SECTION A-A
60' MEDIAN
EXPRESSWAY UNDER

FOR DETAIL ON GUARD RAIL
END POST, SEE SHEET NO. 268



DETAIL OF GUARD RAIL
AT STRUCTURES

GUARD RAIL DETAIL
BRIDGE NO LAK-2-1471
S.R.2 OVER B.&O. R.R.

44' MEDIAN

POST	OFFSET	POST	OFFSET
1/2	6.04		
1	6.16		
2	6.64		
3	7.44		
4	8.57		
5	10.01		
6	11.77		
7	13.84		
8	16.23		
9	18.78		
10	21.33		
11	23.87		
12	26.42		

NOTE

GENERAL - Design details shown hereon shall govern the construction of guard rail at structures and piers unless otherwise shown on the plans.

DIKE shall be provided in the median at each end of overpass structures.

Top of rail shall be 24" above profile grade line throughout length of rail.

All slopes are 6:1 unless otherwise noted in the Plans.

For details of fastening the guard rail to pier footings see Std. Drawing 1-15, 6

Radius to face of Rail is shown on Plan if altered.