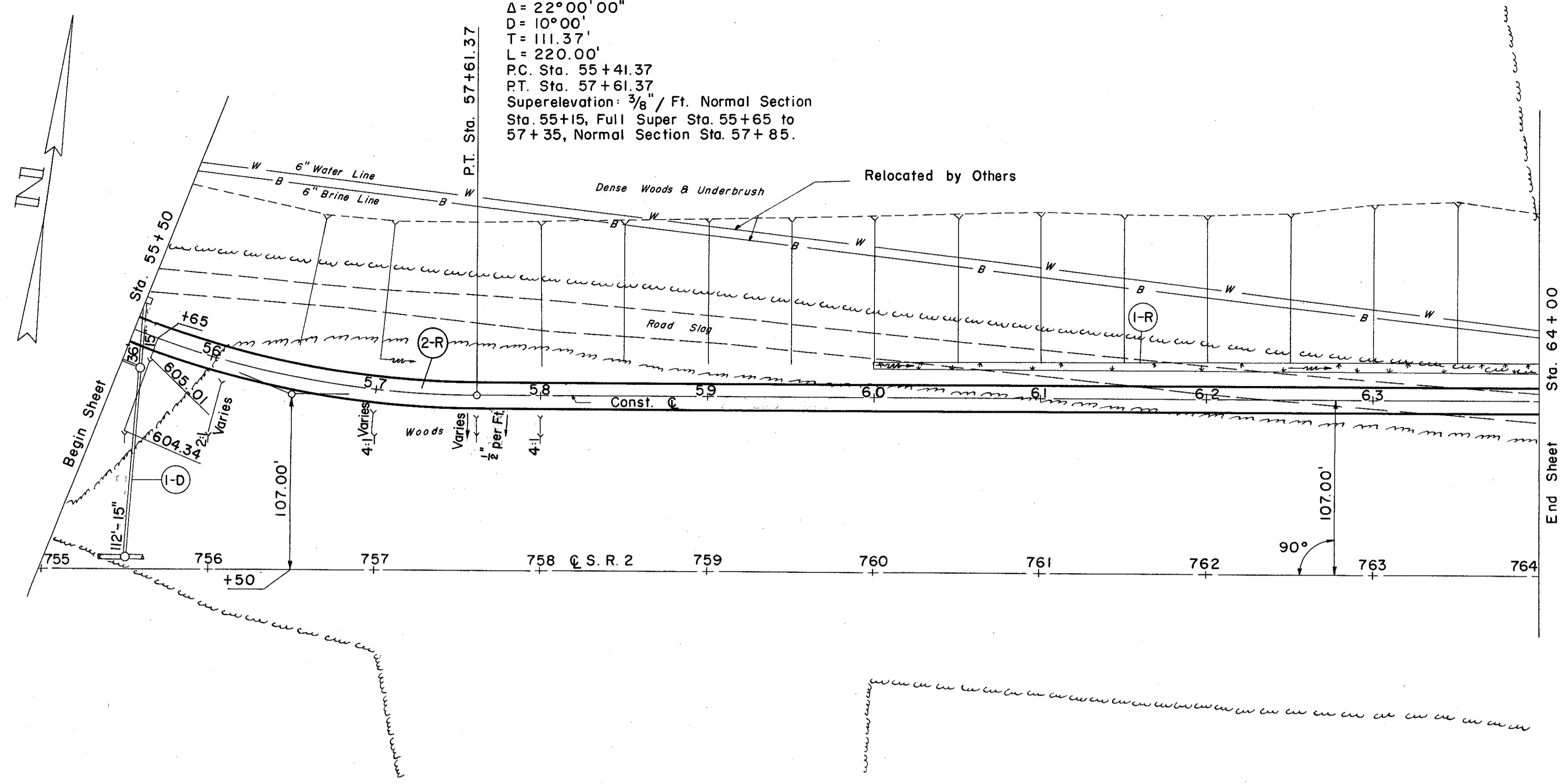


LAKE COUNTY
LAK-2-14.22

ACCESS ROAD
CURVE DATA
P.I. Sta. 56+52.74 Lt.
 $\Delta = 22^\circ 00' 00''$
D = 10' 00"
T = 111.37'
L = 220.00'
P.C. Sta. 55+41.37
P.T. Sta. 57+61.37
Superelevation: $\frac{3}{8}$ " / Ft. Normal Section
Sta. 55+15, Full Super Sta. 55+65 to 57+35, Normal Section Sta. 57+85.



(D) DRAINAGE

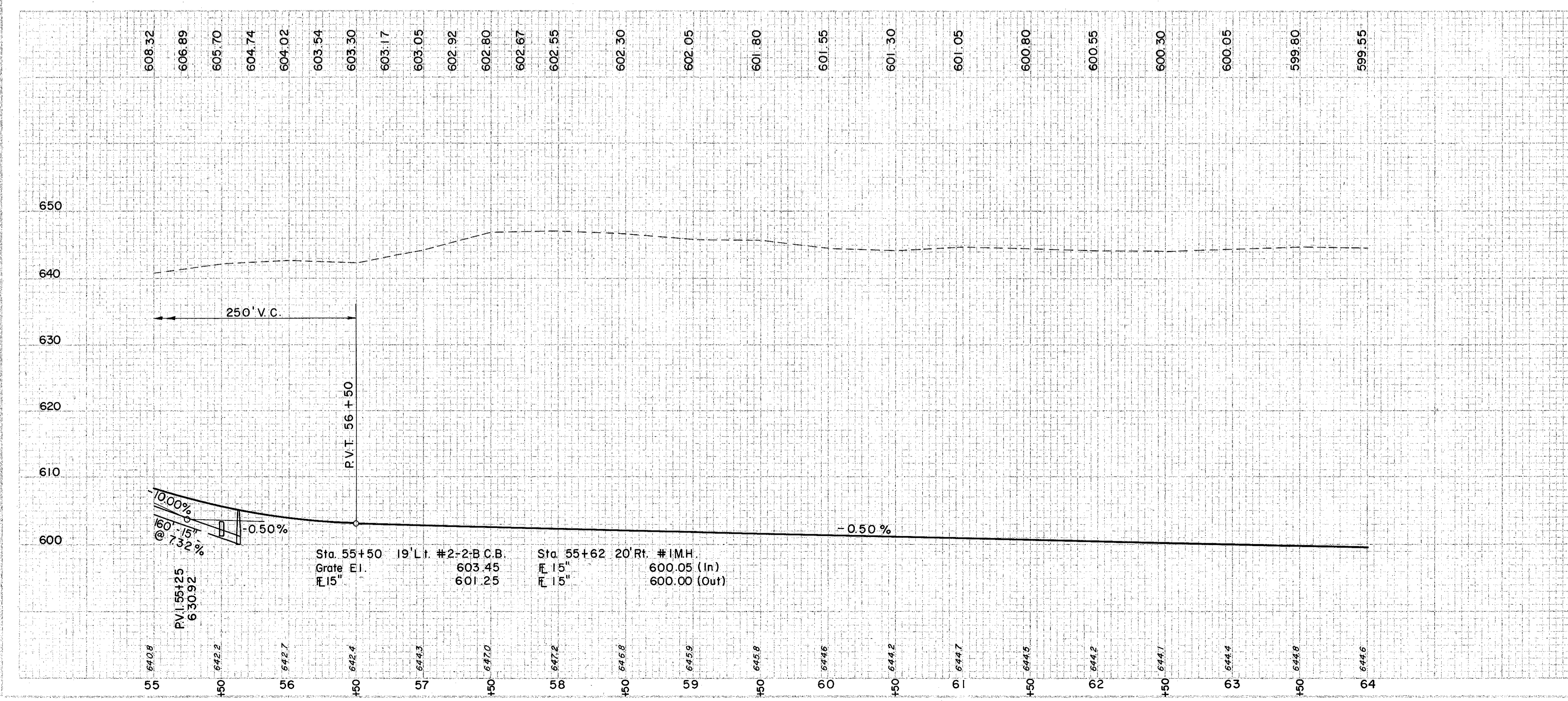
REF. NO.	STATION	S I D E	I-1		I-8	
			CLASS. PIPE	STD. #2-2B C.B.	STD. #1 M.H.	STD. #1 M.H.
I-D	55+55	C	SEC M-66(1) OR M-68(b) 15"	158	1	1

(R) ROADWAY

REF. NO.	STATION	S I D E	L-10			L-9	
			SODDING	COMMER. FERTILIZER	SEEDING & PROTECT.	TONS	S.Y.
I-R	60+00	Lt.	251				
2-R	55+50	Lt.		1,188	13,203		
TOTAL			251	1,188	13,203		

STATION	SODDING LEFT DITCH		S. Y.
	WIDTH OF SODDING FT.	LENGTH OF SODDING FT.	
60+00	4.5		
64+00	6.8	400	251
SUB TOTAL			

EXCAVATION	127,851 C.Y.
EMBANKMENT	0
EMBANKMENT 20%	0



Sta. 55+50 19' Lt. #2-2-B C.B. Grate El. 603.45 El. 601.25
Sta. 55+62 20' Rt. #1 M.H. 600.05 (In) 600.00 (Out)