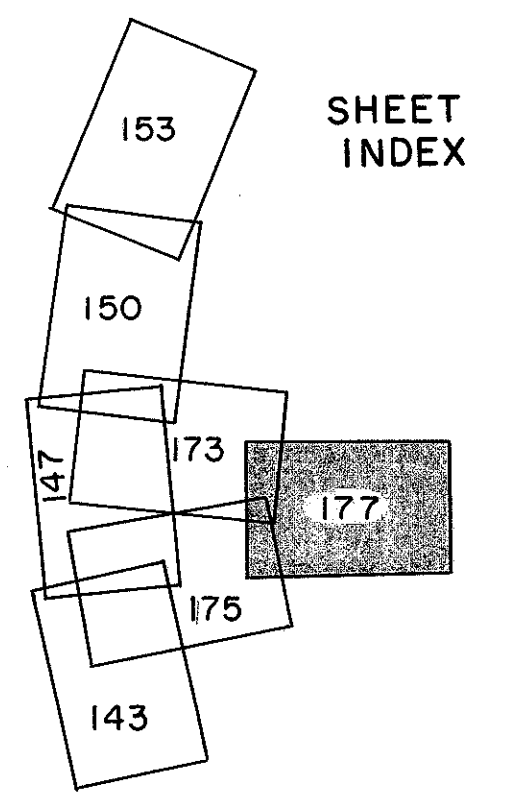


LAKE COUNTY  
LAK-2-14.22



**CURVE DATA**

<b>D-D 2</b> P.I. Sta. 20+45.52 Δ = 29° 30' 25" Lt. D = 8° 00' R = 716.20' L = 368.84' T = 188.61'	<b>D-D 3</b> P.I. Sta. 23+63.30 Δ = 10° 58' 12" Lt. D = 4° 00' R = 1432.39' L = 274.25' T = 137.55'	<b>F-F 3</b> P.I. Sta. 20+02.23 Δ = 42° 38' 47" Rt. R = 700.00' L = 521.02' T = 273.25'
<b>F-F 4</b> Δ = 16° 40' 05" Rt. R = 600.00' L = 174.55'		

FOR QUANTITIES SEE  
SHEET NO. 178

STATION	WIDTH OF SODDING FT.	LENGTH OF SODDING FT.	S.Y.
20+50	2.8	50	
21+00	2.8		16

STATION	WIDTH OF SODDING FT.	LENGTH OF SODDING FT.	S.Y.
21+00 FF	6.8	289	
694+00 M	4.8		186

STATION	WIDTH OF SODDING FT.	LENGTH OF SODDING FT.	S.Y.
18+35	9.9	155	149
20+00	7.4	239	173
22+54	5.6		
SUB-TOTAL			322

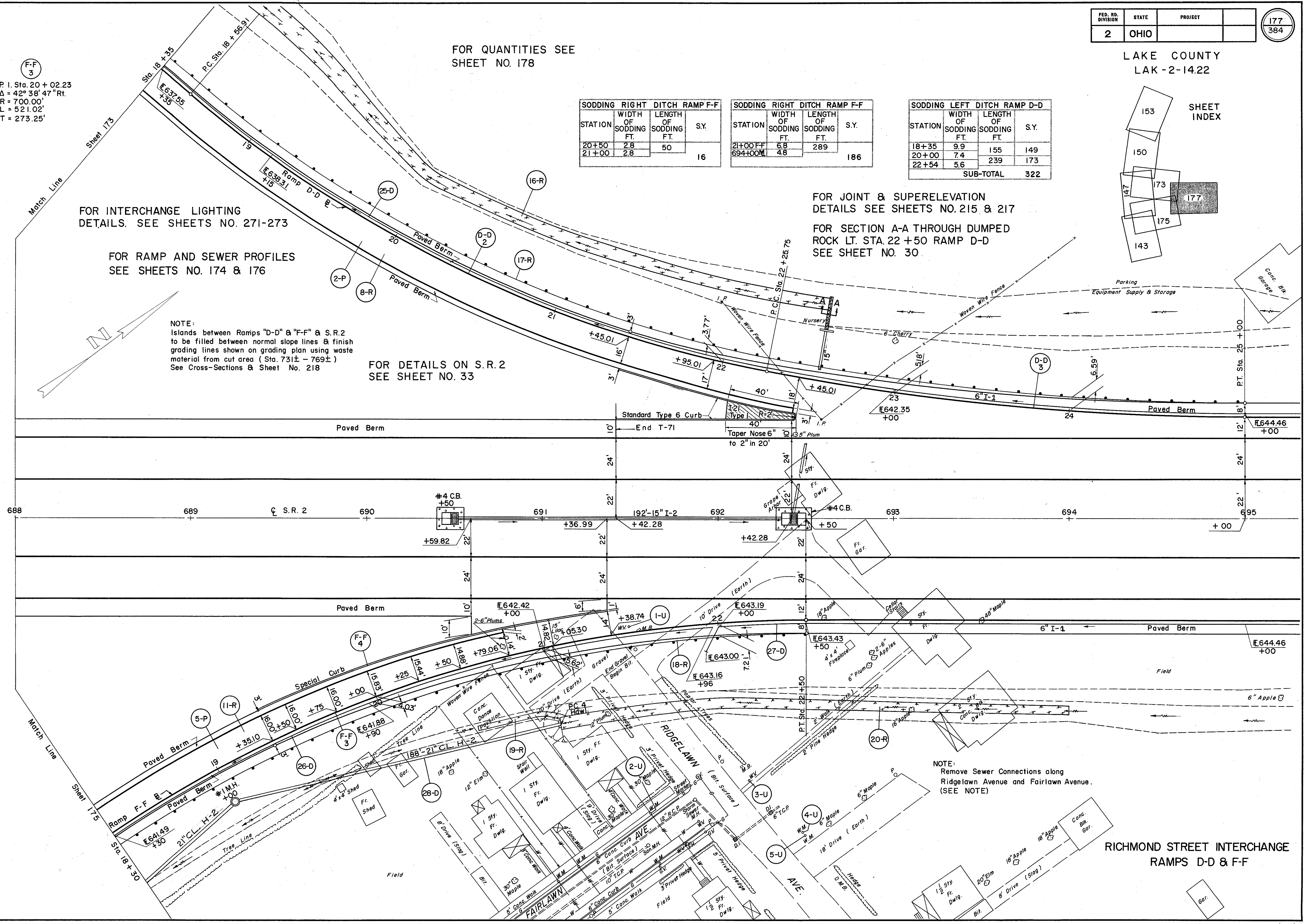
FOR JOINT & SUPERELEVATION  
DETAILS SEE SHEETS NO. 215 & 217  
FOR SECTION A-A THROUGH DUMPED  
ROCK LT. STA. 22+50 RAMP D-D  
SEE SHEET NO. 30

FOR INTERCHANGE LIGHTING  
DETAILS. SEE SHEETS NO. 271-273

FOR RAMP AND SEWER PROFILES  
SEE SHEETS NO. 174 & 176

NOTE:  
Islands between Ramps "D-D" & "F-F" & S.R.2  
to be filled between normal slope lines & finish  
grading lines shown on grading plan using waste  
material from cut area (Sta. 731± - 769±)  
See Cross-Sections & Sheet No. 218

FOR DETAILS ON S.R.2  
SEE SHEET NO. 33



NOTE:  
Remove Sewer Connections along  
Ridgelawn Avenue and Fairlawn Avenue.  
(SEE NOTE)

RICHMOND STREET INTERCHANGE  
RAMPS D-D & F-F