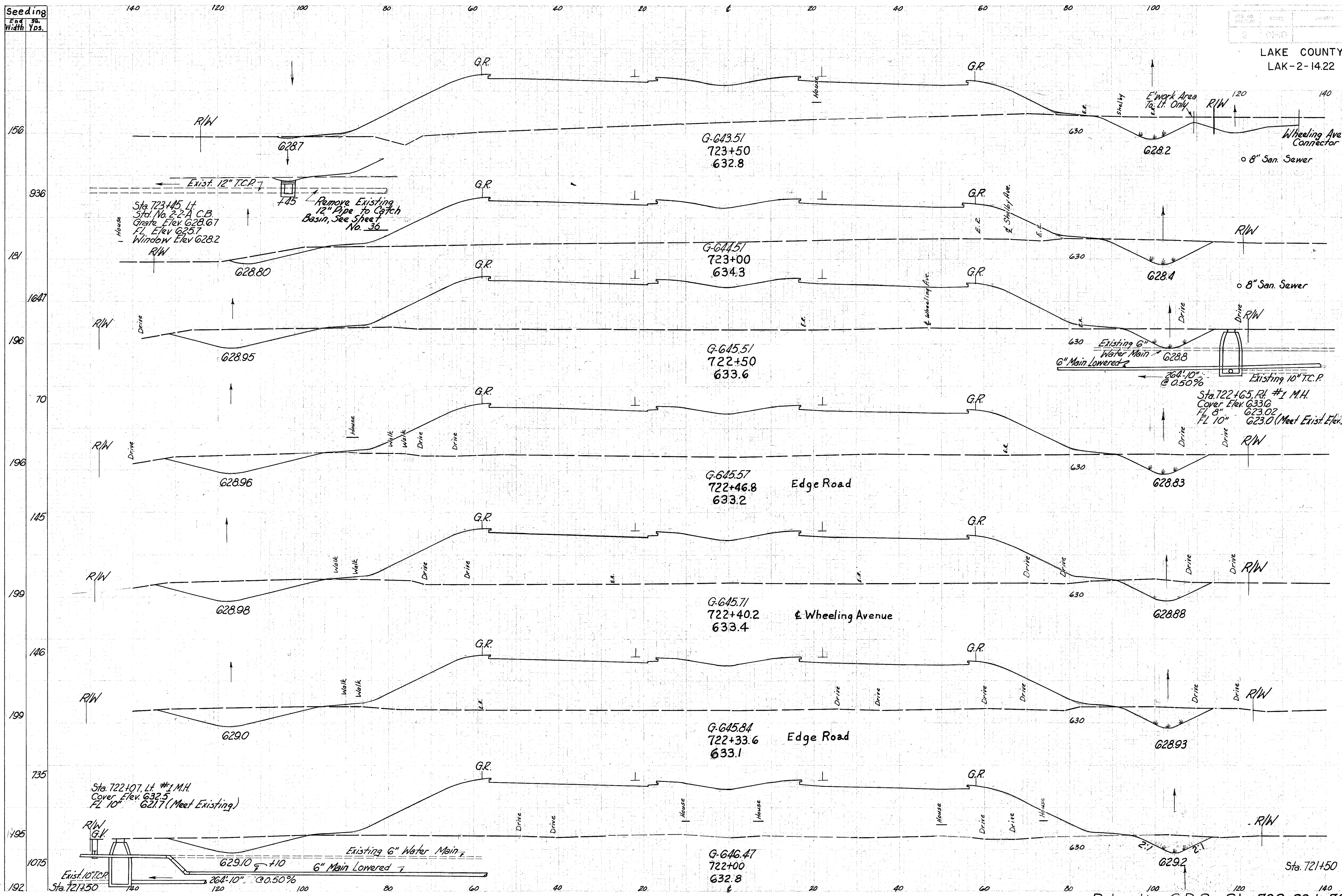


Seeding
End Sta.
Width Yds.

LAKE COUNTY
LAK-2-14.22



END AREA	CU. YDS.	
	CUT	FILL
74	1498 -27 1471	176 2660 -47 2613
116	1375 -24 1351	250 2782 -47 2735
154	1630 -27 1603	17 183 -3 180
158	1669 -27 1642	43 444 -7 437
177	1757 -28 1729	38 393 -6 387
165	1716 -28 1748	175 2311 -37 2274
113	1894 -31 1863	154 3960 -63 3897
53	2383 -37 2346	

Relocation S.R. 2 Sta. 722+00 to 723+50

Sta. 723+45, Lt. 2-2-A C.B. Gate, Elev. G28.67
Fl. Elev. G25.7
Window Elev. G28.2

Remove Existing 12" Pipe to Catch Basin, See Sheet No. 36

Existing 6" Water Main
Existing 10" T.C.P.
264'-10" @ 0.50%
Existing 10" T.C.P.
Sta. 722+65, Rt. #1 M.H. Cover Elev. G33.0
Fl. 8" G23.02
Fl. 10" G23.0 (Meet Exist. Elev.)

Sta. 722+07, Lt. #1 M.H. Cover Elev. G32.5
Fl. 10" G27.7 (Meet Existing)

Existing 6" Water Main
6" Main Lowered
264'-10" @ 0.50%

update by R...