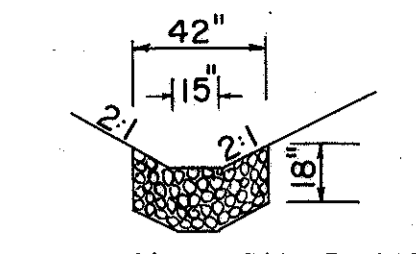


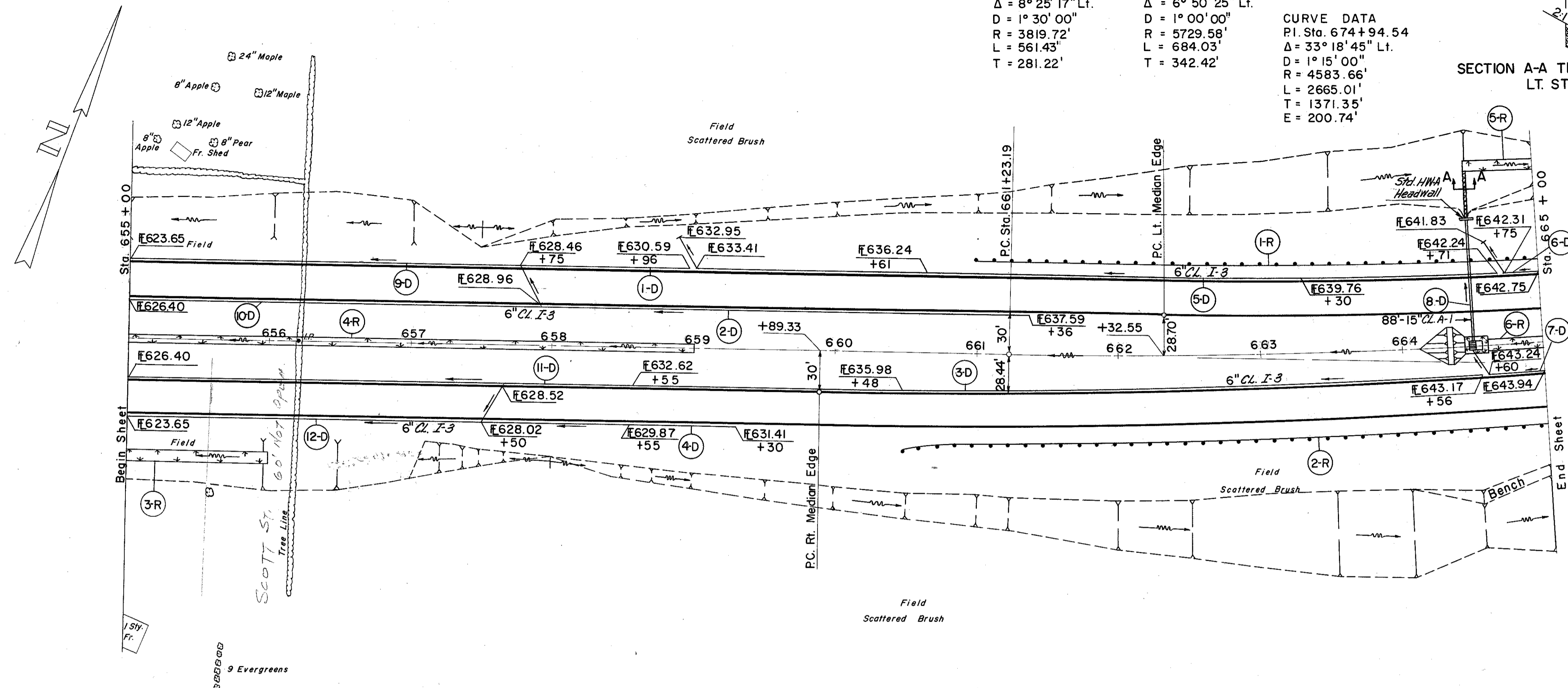
**CURVE DATA**  
 LT. MEDIAN EDGE  
 Δ = 8° 25' 17" Lt.  
 D = 1° 30' 00"  
 R = 3819.72'  
 L = 661.43'  
 T = 281.22'

**CURVE DATA**  
 RT. MEDIAN EDGE  
 Δ = 6° 50' 25" Lt.  
 D = 1° 00' 00"  
 R = 5729.58'  
 L = 684.03'  
 T = 342.42'

**CURVE DATA**  
 P.I. Sta. 674+94.54  
 Δ = 33° 18' 45" Lt.  
 D = 1° 15' 00"  
 R = 4583.66'  
 L = 2665.01'  
 T = 1371.35'  
 E = 200.74'



SECTION A-A THROUGH DUMPED ROCK  
 LT. STA. 664 + 50



D DRAINAGE

REF. NO.	STATION	SIDE	I-1		I-5	I-8	I-10	I-2				
			6" PIPE CLASS I-3	8" PIPE CLASS F-1								
			DEEP	SHALLOW	BENDWYE		STD. #4	DUMPED ROCK CHANNEL PROTECT.				
			L.F.	L.F.	EA.	EA.	EA.	C.Y.				
1-D	658+25	658+96	LT.	71								
2-D	658+25	661+36	LT.		311							
3-D	658+25	664+56	RT.		633							
4-D	658+25	659+30	RT.	105								
5-D	659+00	664+71	LT.		580	10						
6-D	664+75	665+00	LT.		38	10						
7-D	664+60	665+00	RT.		46	10						
8-D	664+50		C.	88								
9-D	655+00	658+25	LT.	349			1	6.2				
10-D	655+00	658+25	LT.		325							
11-D	655+00	658+25	RT.		325							
12-D	655+00	658+25	RT.	349								
<b>TOTAL</b>				<b>88</b>	<b>874</b>	<b>2,258</b>	<b>30</b>	<b>3</b>	<b>2</b>	<b>1</b>	<b>6.2</b>	<b>3.2</b>

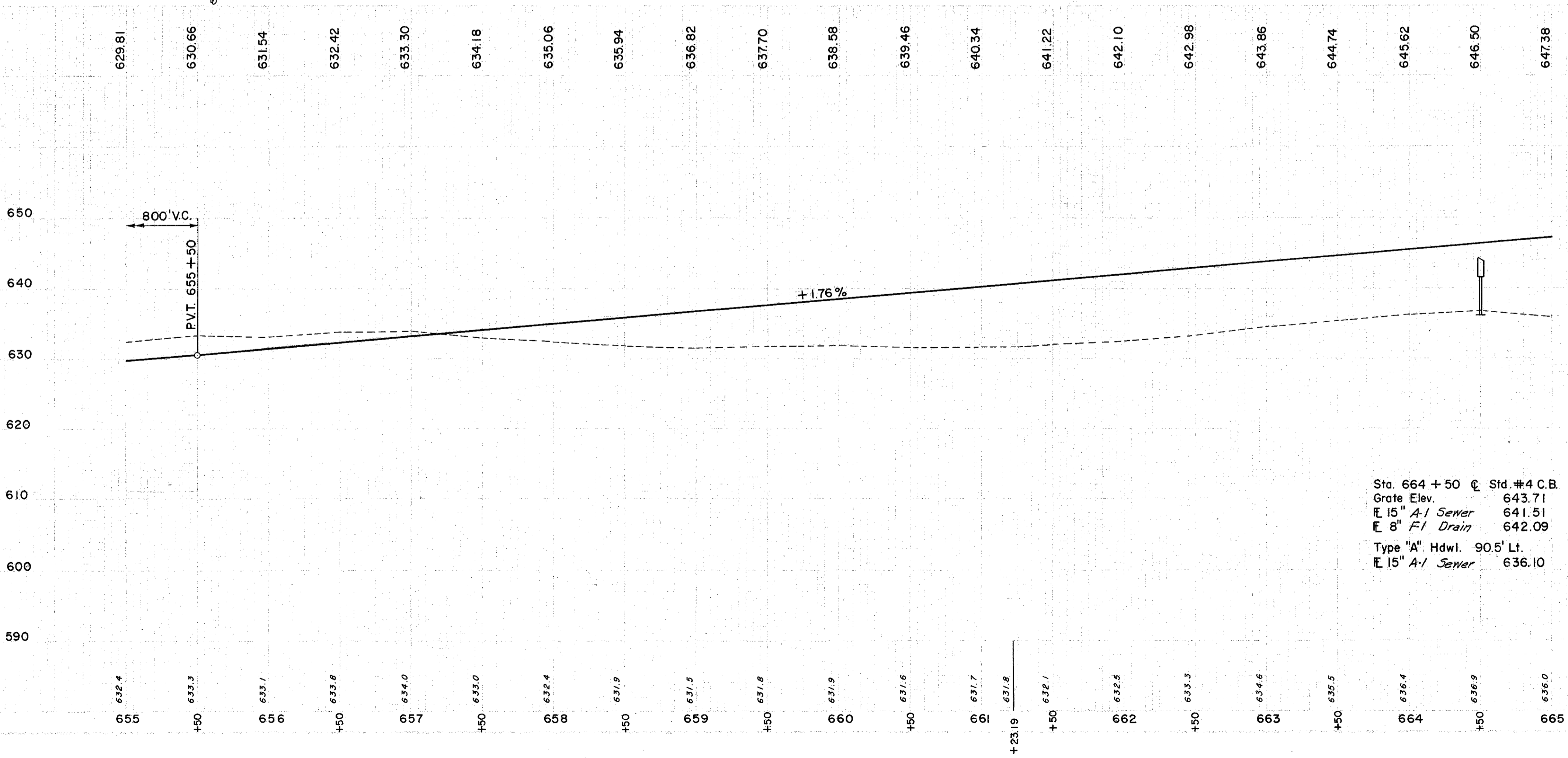
REF. NO.	STATION	SIDE	I-15 GUARD RAIL STEEL BEAM STD. TYPE (DEEP)	L-10 SODDING
1-R	660+97	665+03	LT.	400.0
2-R	660+48	665+07	RT.	462.5
3-R	655+00	656+00	RT.	95
4-R	655+00	659+00	C.	316
5-R	664+50	665+00	LT.	36
6-R	664+60	665+00	C.	50
<b>TOTAL</b>			<b>862.5</b>	<b>497</b>

R ROADWAY

SODDING MEDIAN DITCH			
STATION	WIDTH OF SODDING FT.	LENGTH OF SODDING FT.	S.Y.
655+00	8.2	400	316
659+00	6.0		
664+60	8.0	40	35
665+00	7.7		
<b>SUB TOTAL</b>			<b>351</b>

SODDING RIGHT DITCH			
STATION	WIDTH OF SODDING FT.	LENGTH OF SODDING FT.	S.Y.
655+00	8.7		
656+00	8.4	100	95
<b>SUB TOTAL</b>			<b>95</b>

SODDING LEFT DITCH			
STATION	WIDTH OF SODDING FT.	LENGTH OF SODDING FT.	S.Y.
664+50	6.2	50	
665+00	6.6		36
<b>SUB TOTAL</b>			<b>36</b>



Sta. 664 + 50 C. Std. #4 C.B.  
 Grate Elev. 643.71  
 E 15" A-1 Sewer 641.51  
 E 8" F-1 Drain 642.09  
 Type 'A' Hdwl. 90' Lt.  
 E 15" A-1 Sewer 636.10

Excavation = 8,430 C.Y.  
 Embankment = 29,712 C.Y.  
 Crosswalk = 20 = 35,654 C.Y.