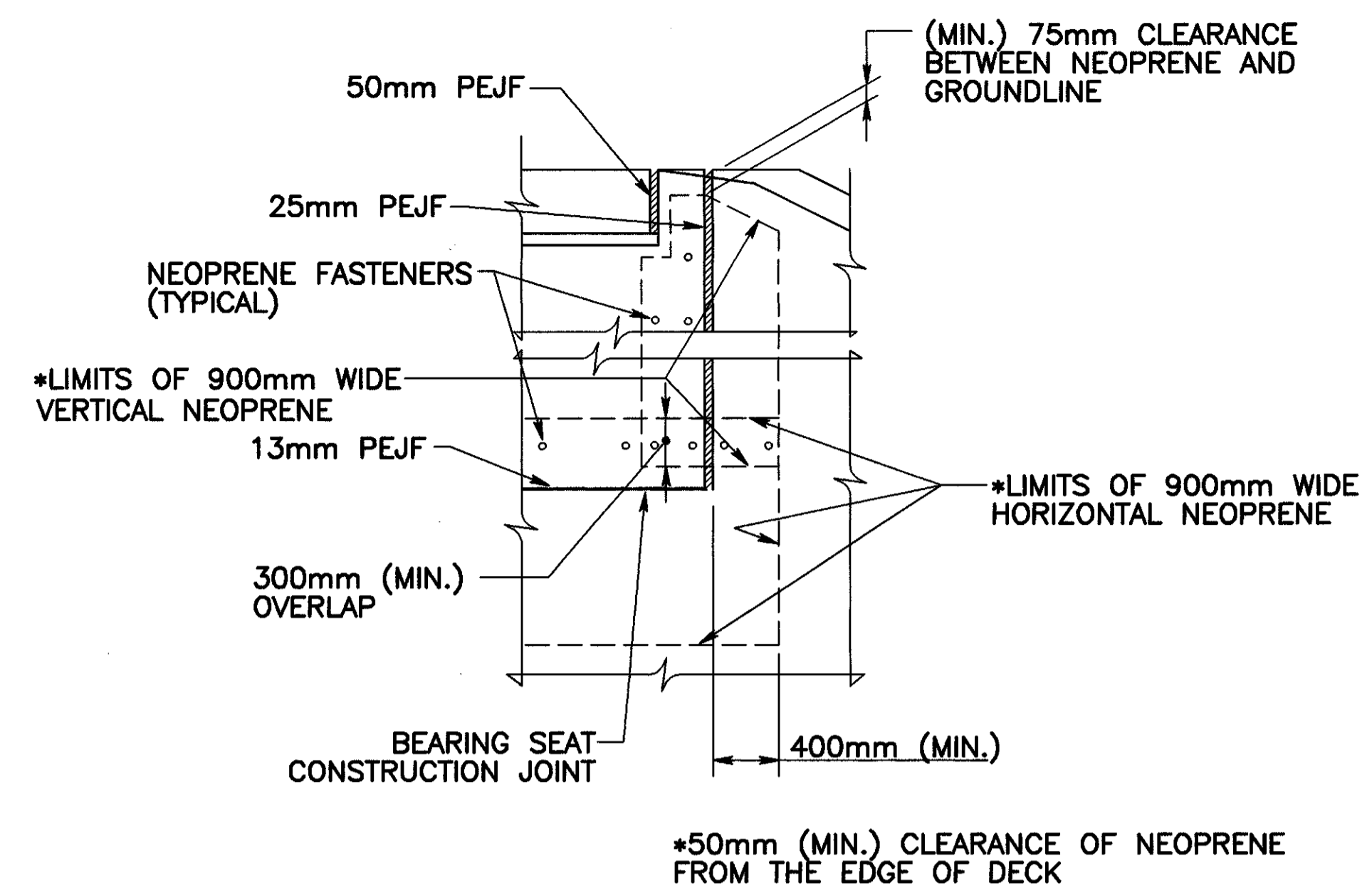
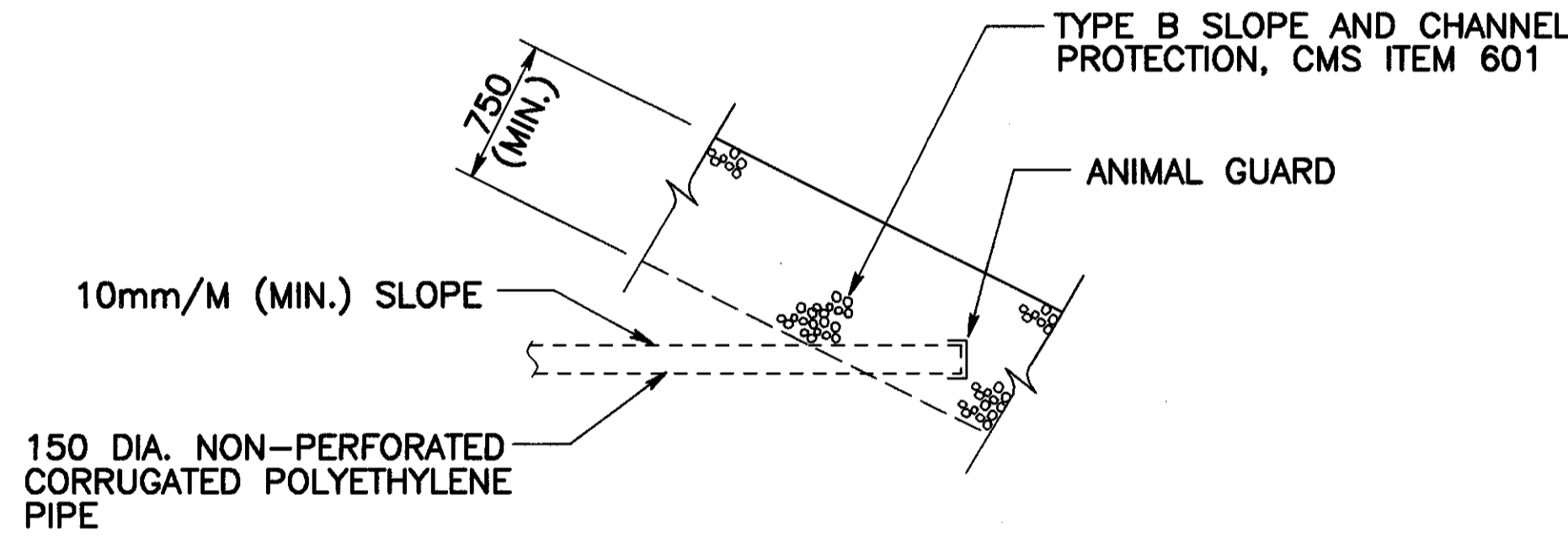


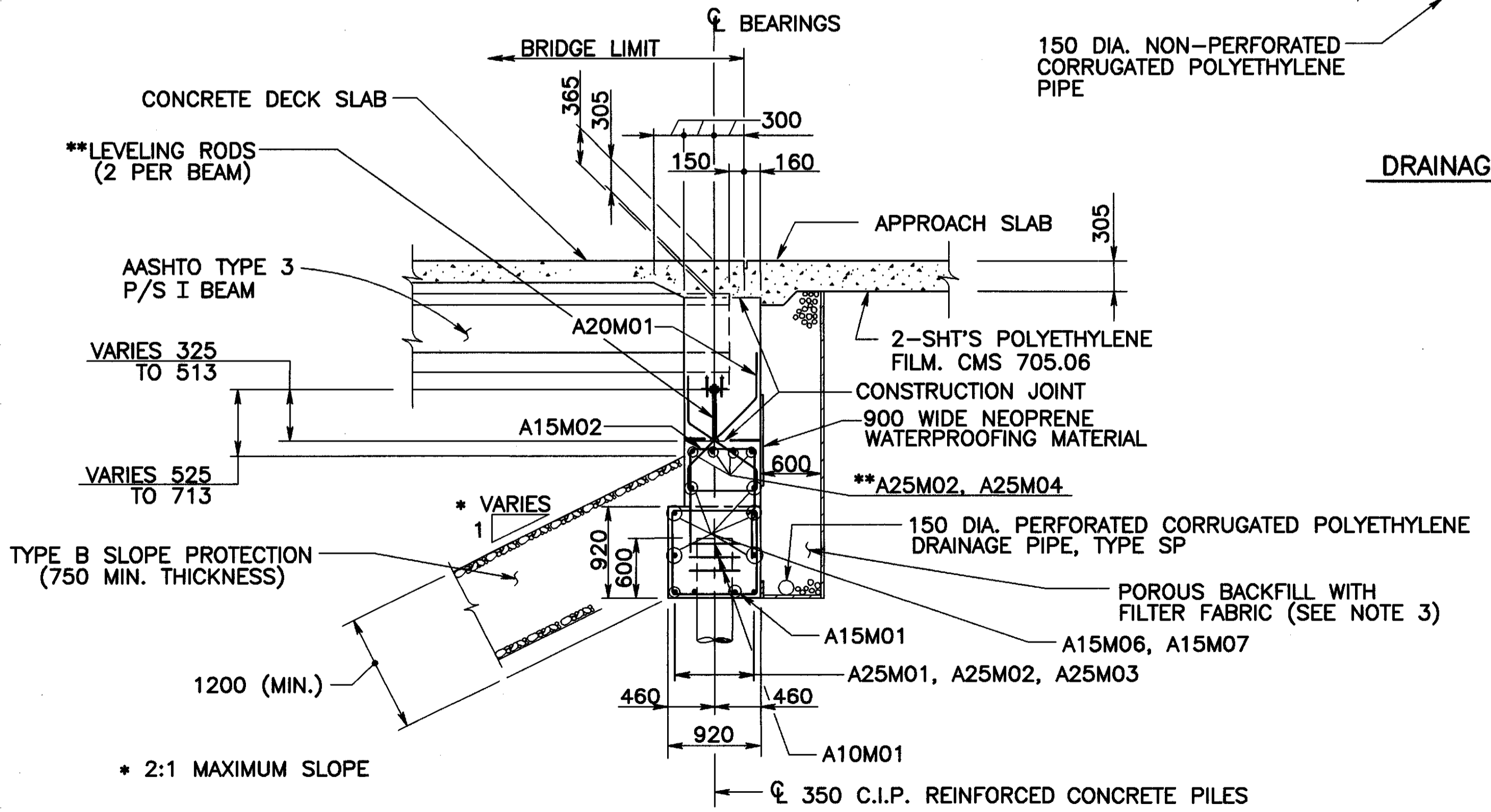
SECTION 2
(THRU WINGWALLS)



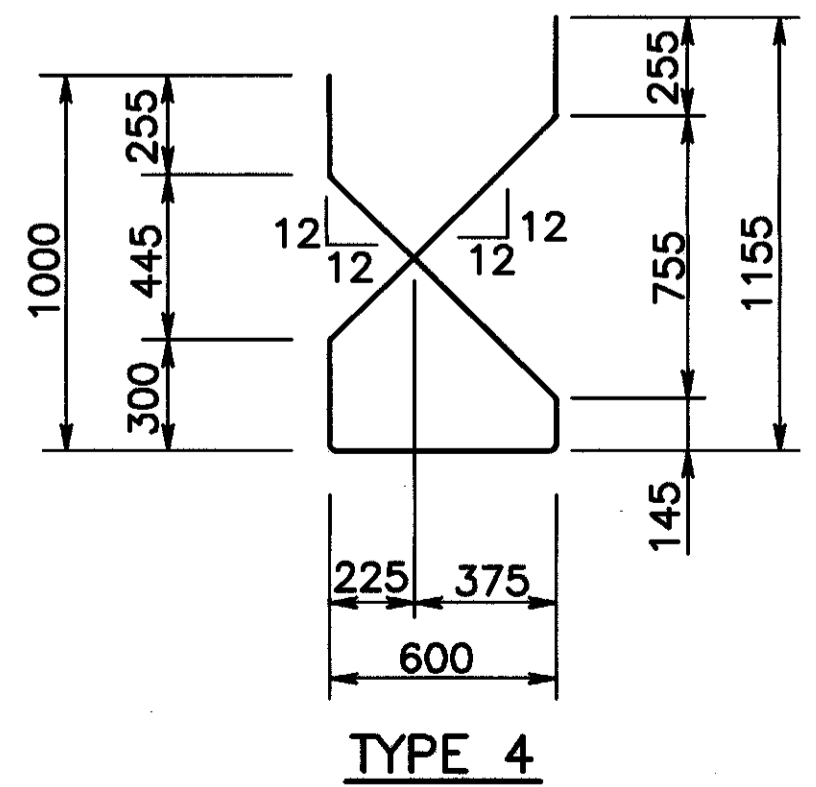
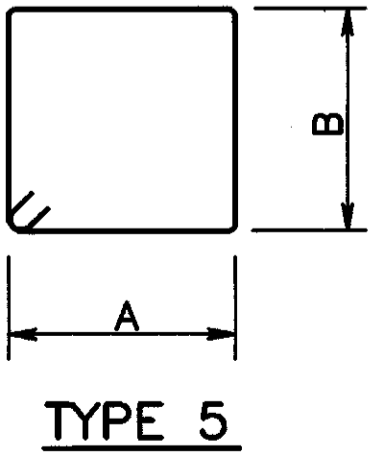
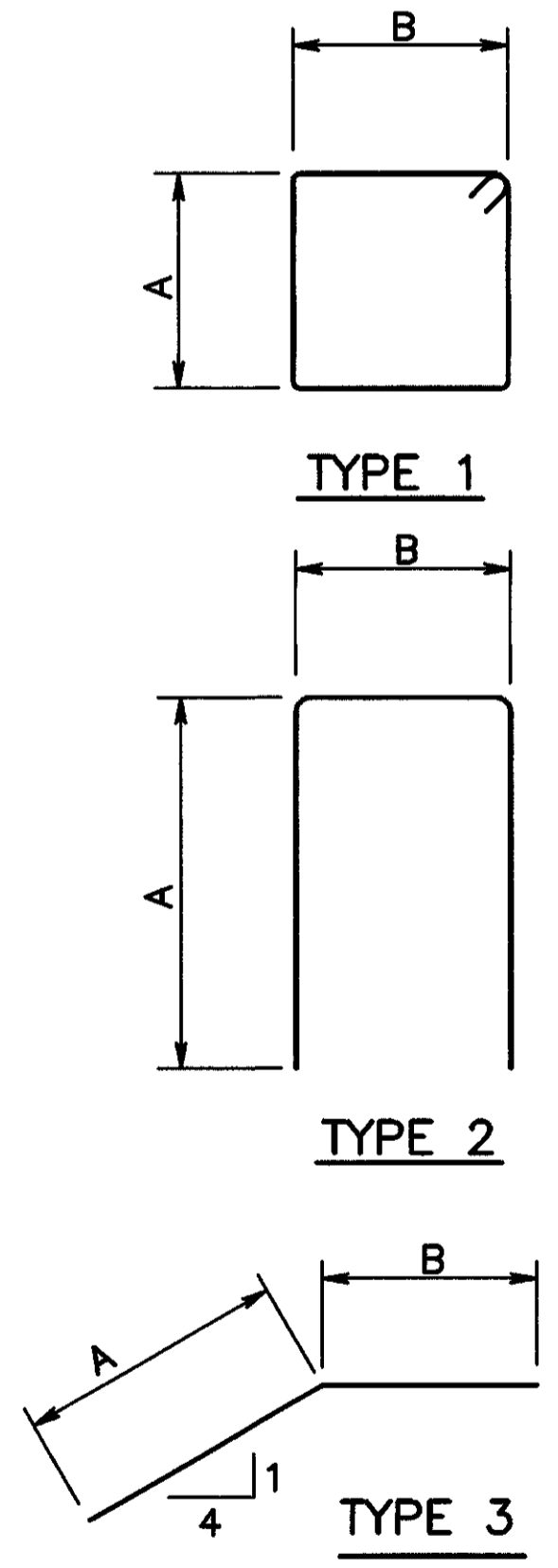
WATERPROOFING DETAIL
(TYPICAL AT END OF DIAPHRAGM)



DRAINAGE PIPE DETAIL



SECTION 1
(THRU WINGWALLS)



- NOTE:**
- 1.) ALL DIMENSIONS ARE IN MILLIMETERS
 - 2.) POROUS BACKFILL WITH FILTER FABRIC, 600mm THICK SHALL EXTEND UP TO THE PLANE OF THE SUB GRADE, TO 300mm BELOW THE EMBANKMENT SURFACE AND LATERALLY TO THE ENDS OF THE WING WALLS. GEOTEXTILE FABRIC SHALL CONFORM WITH 712.09, TYPE A. TURN GEOTEXTILE FABRIC UP 150mm ALONG BACK OF WALL.
 - 3.) END DIAPHRAGM CONCRETE ENCASING THE CONCRETE BEAMS SHALL BE PLACED AT LEAST 48 HOURS BEFORE THE ACTUAL DECK CONCRETE IS PLACED.
 - 4.) SEE SHEET 5/13 FOR ABUTMENT PLAN AND ELEVATION.
 - 5.) SEE SHEET 9/13 FOR BEAM BEARING DETAIL.
 - 6.) SEE STD. DWG. ICD - 1 - 82M FOR ADDITIONAL NOTES AND DETAILS.

MARK	LENGTH (mm)	A	B	SHAPE TYPE
A15M01	3160	770	770	1
A15M02	2870	1135	600	2
A15M03	5880	2640	600	2
A15M04	3000	1200	600	2
A15M06	10 850			STR.
A15M07	6660			STR.
A15M08	2825			STR.
A15M09	2860	2660	200	3
A15M10	1855			STR.
A20M01	3100			4
A25M01	10 850			STR.
A25M02	6405			STR.
A25M03	7595			STR.
A25M04	8155			STR.
A10M01	2435	740	515	5

ALL BARS ARE EPOXY COATED

** IF DRILL AND GROUT TECHNIQUE IS USED TO INSTALL THE LEVELING RODS, THE LONGITUDINAL REINFORCING STEEL SHALL BE ADJUSTED TO AVOID BEING DAMAGED BY DRILLING OPERATION.

FILE: \projects\31323\900\1\2006.dgn DATE: 10/18/06 10:11:11 AM

DESIGN AGENCY: Gannett Fleming Corridor & Carpenter ENGINEERS AND PLANNERS
 BLENDONVIEW OFFICE PARK
 5015 PINE CREEK DR., COLUMBUS, OHIO 43081
 BRIDGE NO. LAK - 2 - 12.231
 S.R. 2 OVER NEWELL CREEK
 LAK-2-12.231 (L. AND R.)
 6/13
 36
 43