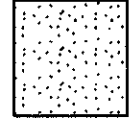

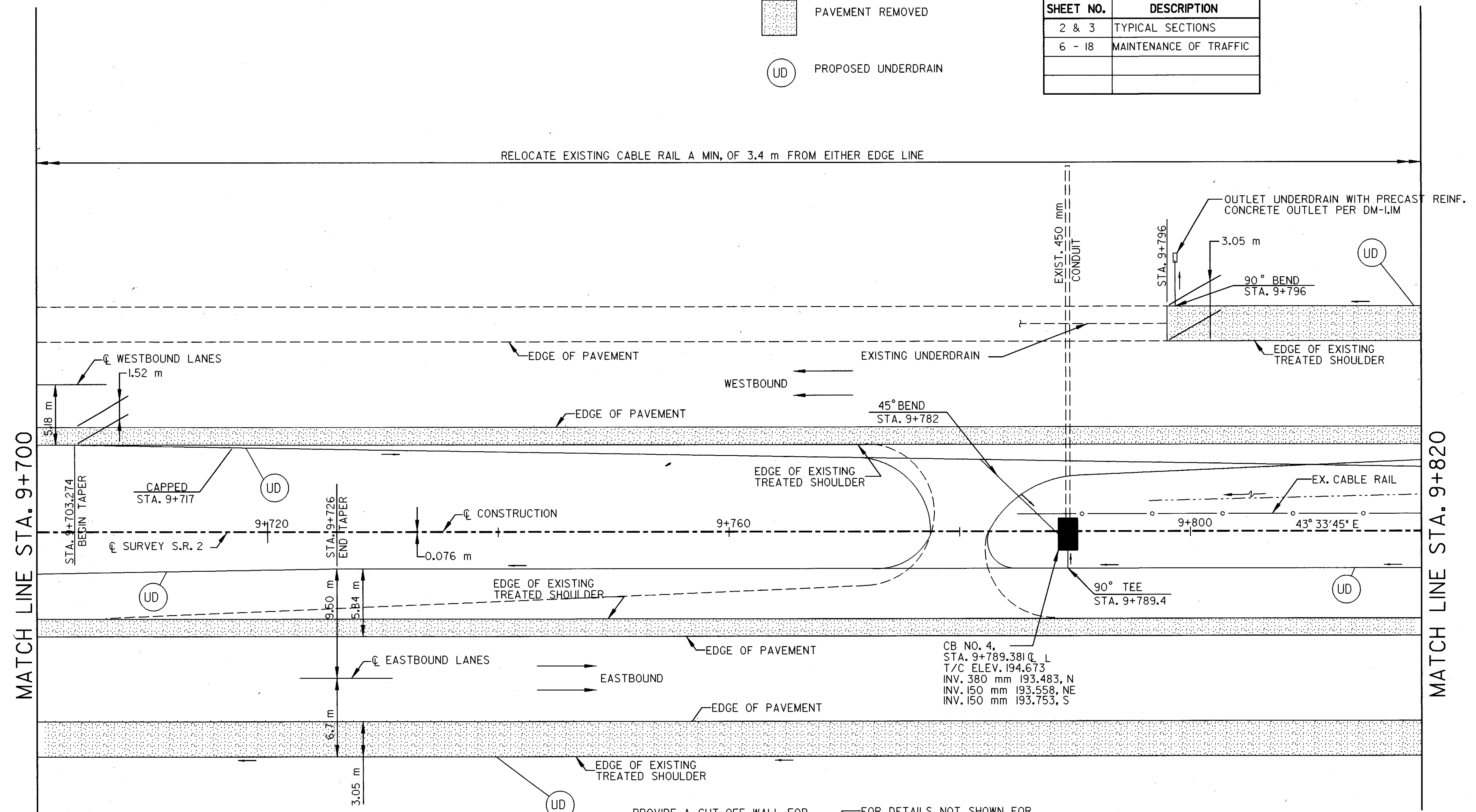


LEGEND

-  PAVEMENT REMOVED
-  PROPOSED UNDERDRAIN

CROSS REFERENCES	
SHEET NO.	DESCRIPTION
2 & 3	TYPICAL SECTIONS
6 - 18	MAINTENANCE OF TRAFFIC



ITEM 604, CATCH BASIN

THE REQUIREMENTS OF ITEM 604 SHALL GOVERN THE ADJUSTMENT TO GRADE OF THE EXISTING CATCH BASINS. THE WORK SHALL INCLUDE THE REMOVAL AND CLEANING OF THE EXISTING FRAME, ADJUSTING THE SUPPORTING WALLS AS NECESSARY, AND RESETTING THE EXISTING FRAME IN A BED OF MORTAR OR CONCRETE. THE CONCRETE APRON SHALL BE REPLACED AND BACKFILLED AS SHOWN HERE AND IN THE STANDARD DRAWING FOR THE PERTINENT CATCH BASIN.

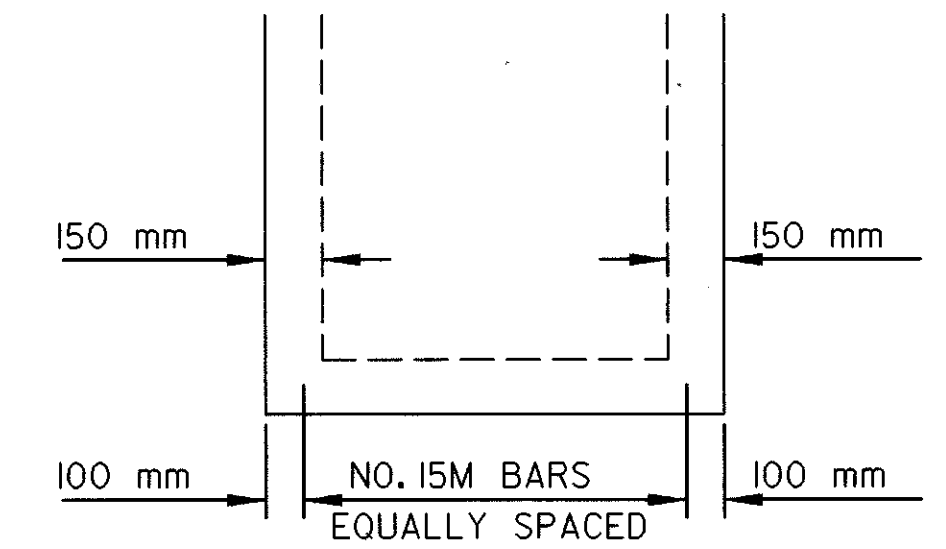
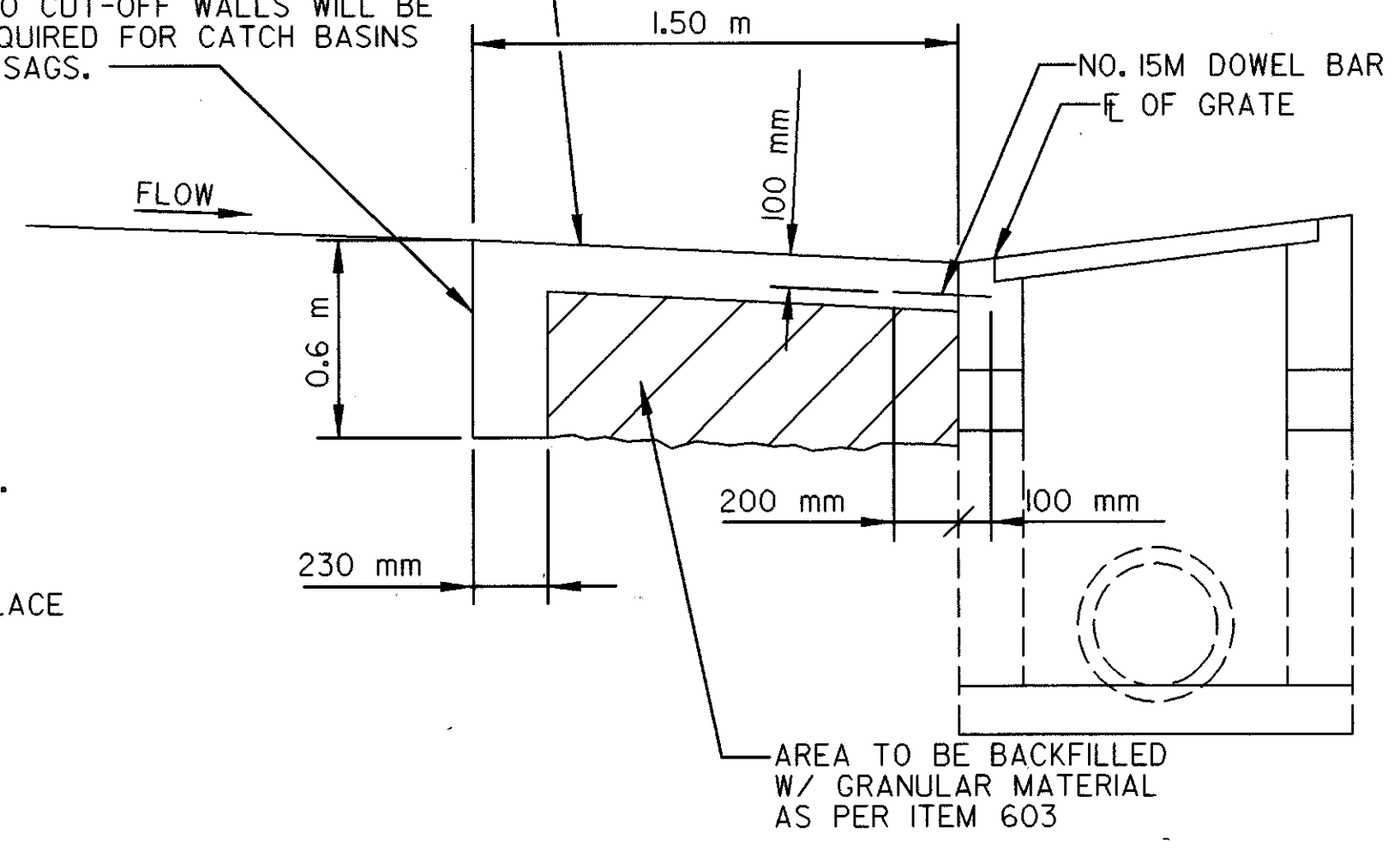
PAYMENT FOR THE ABOVE WORK SHALL BE INCLUDED IN THE UNIT BID PRICE FOR ITEM 604, CATCH BASIN ADJUSTED TO GRADE, AS PER PLAN, AND SHALL CONSTITUTE FULL COMPENSATION FOR FURNISHING ALL MATERIAL, LABOR, TOOLS, AND EQUIPMENT INCIDENTAL TO COMPLETE THIS ITEM OF WORK.

THE NUMBER OF BARS NEEDED ALONG EACH SIDE OF A NO. 4 CATCH BASIN WITH A CONCRETE APRON IS 7. FOR A NO. 5 & 8 CATCH BASIN, THE NUMBER OF BARS NEEDED ALONG EACH SIDE WITH A CONCRETE APRON IS 4.

THE FURNISHING AND PLACING OF STEEL FOR THE 15M x 300 mm DOWEL BARS SHALL BE PER 509 REINFORCING STEEL. THE DOWEL BARS SHALL BE EPOXY COATED PER 509.10. THE DOWEL BARS SHALL BE INSTALLED PER 510 OR CAST INTO THE BASIN. BOLT-IN INSERTS MAY BE USED. THE CATCH BASIN SHALL BE PRECAST OR CAST-IN-PLACE CONCRETE. BRICK OR CONCRETE BLOCK WILL NOT BE PERMITTED. THE 150 mm CONCRETE APRON SHALL BE REINFORCED PER 601.04.

PROVIDE A CUT-OFF WALL FOR THE FULL WIDTH OF THE APRON ALONG THE UPSTREAM SIDE ONLY. TWO CUT-OFF WALLS WILL BE REQUIRED FOR CATCH BASINS IN SAGS.

FOR DETAILS NOT SHOWN FOR CONCRETE APRON, SEE STD. DWG. FOR APPROPRIATE C.B.



BAR LOCATION DETAIL

CATCH BASIN NO.	TOTAL NO. OF BARS FOR A	
	STD. APRON	SAG APRON
4	7	14
5	12	16
8	12	16