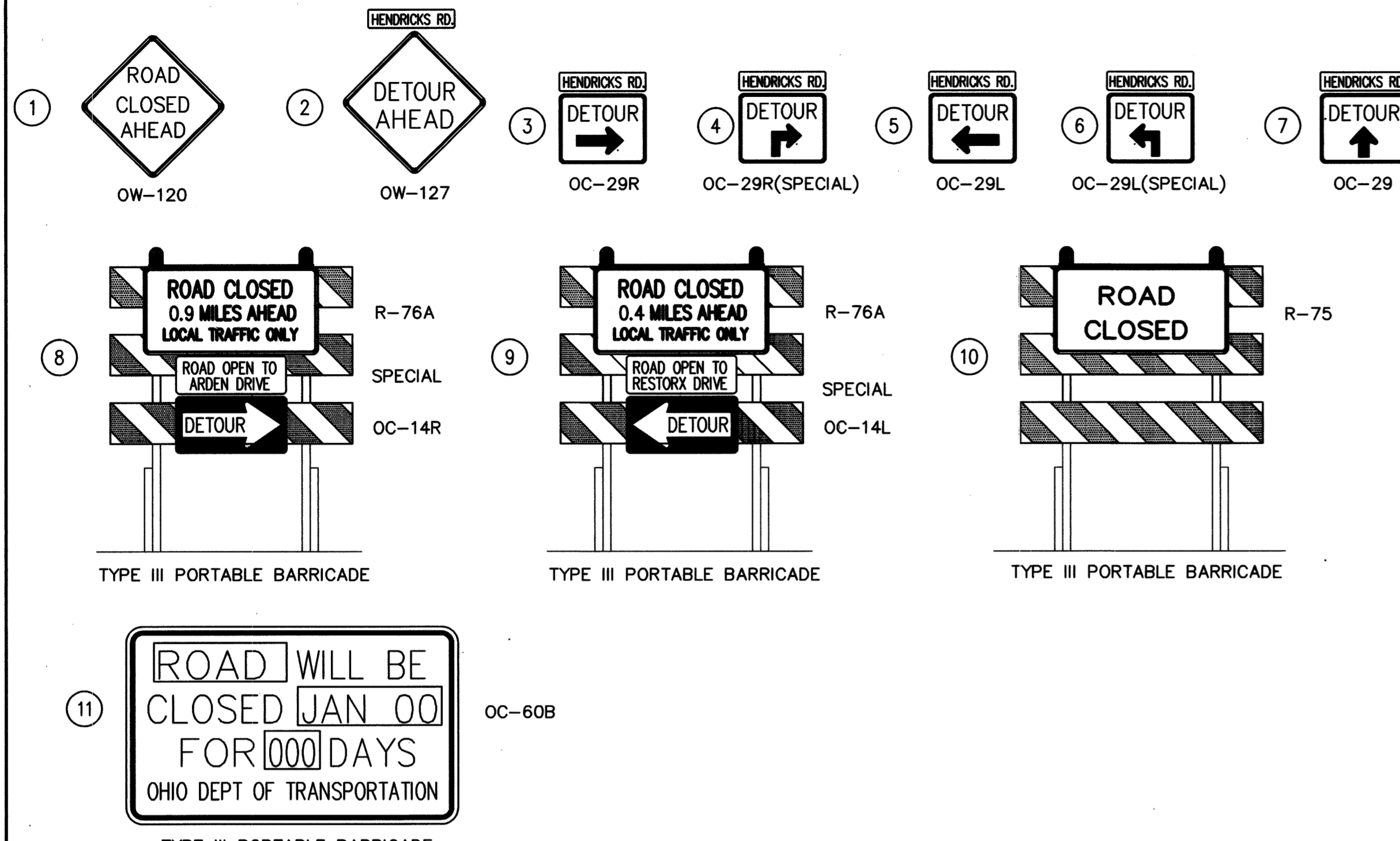


HENDRICKS ROAD DETOUR PLAN

SIGNING LEGEND



(TO BE ERECTED ONE WEEK IN ADVANCE OF CLOSING THE ROAD)

MAINTENANCE OF TRAFFIC GENERAL NOTES

NOTIFICATION

THE CONTRACTOR SHALL NOTIFY IN WRITING THE CITY OF MENTOR POLICE, FIRE, ENGINEER AND PUBLIC WORKS DEPARTMENTS AND THE MENTOR EXEMPTED VILLAGE BOARD OF EDUCATION AT LEAST ONE (1) WEEK PRIOR TO THE START OF CONSTRUCTION, AND AT LEAST 10 DAYS BEFORE IMPLEMENTING ANY SUBSTANTIAL CHANGE IN TRAFFIC PATTERN OR CLOSING ANY STREET TO TRAFFIC.

WORK HOURS

WORK SHALL NOT BE PERMITTED FROM 9 P.M. TO 7 A.M. EVERY DAY, INCLUDING WEEKENDS.

ITEM 614. MAINTAINING TRAFFIC

THE WORK CALLED FOR UNDER THIS CONTRACT INVOLVES THE CLOSING OF HENDRICKS ROAD AT THE BRIDGE SITE. THE CONTRACTOR SHALL PROSECUTE TO THE FULLEST EXTENT THE WORK INVOLVED SO AS TO REDUCE TO A MINIMUM THE LENGTH OF THE TIME THE ROADWAY WILL BE CLOSED TO TRAFFIC. NO ROAD WILL BE CLOSED UNTIL NECESSARY FOR CONSTRUCTION AS DETERMINED BY THE ENGINEER. LOCAL ACCESS TO ADJUTING PROPERTIES SHALL BE MAINTAINED AT ALL TIMES.

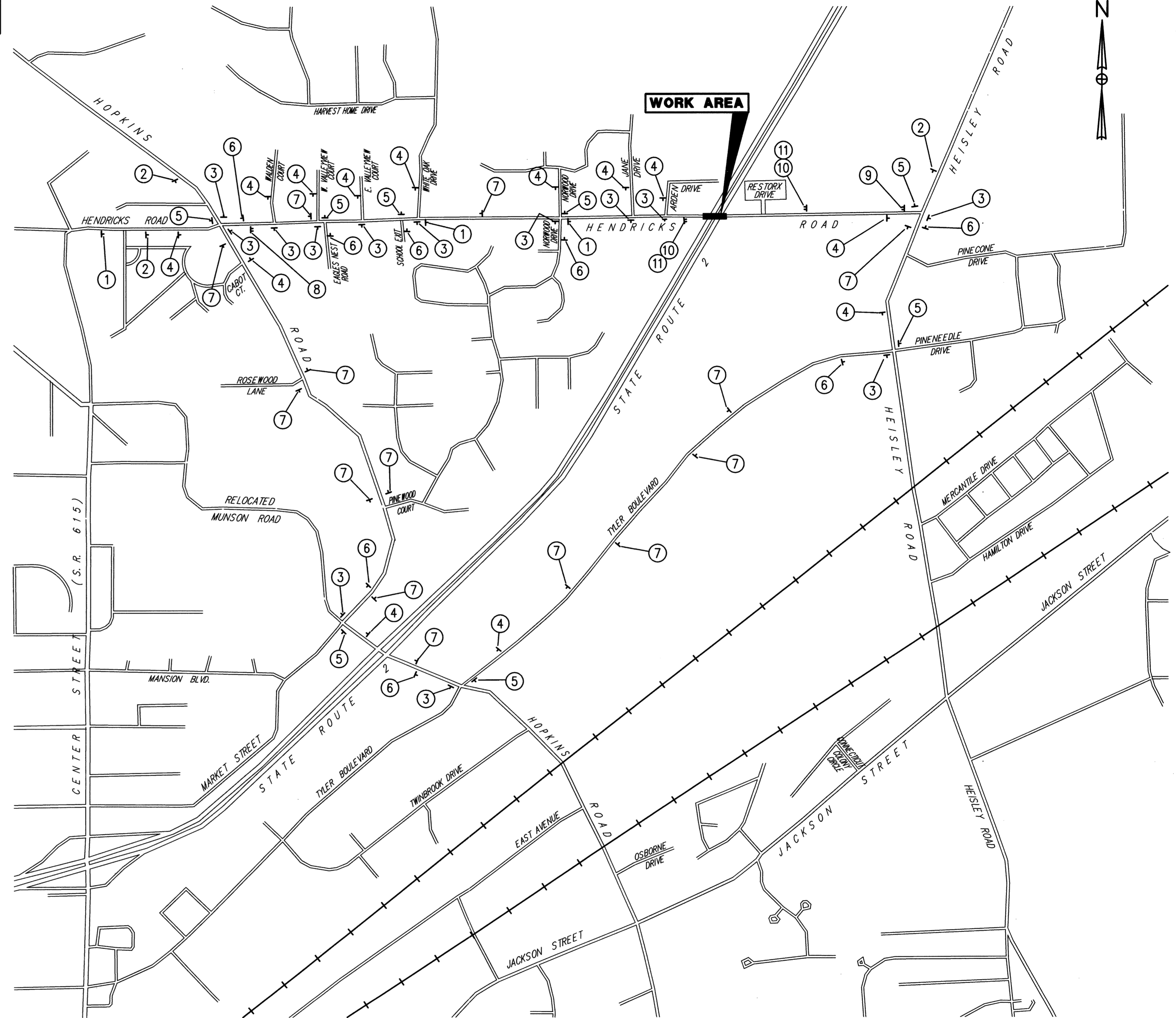
THE CONTRACTOR SHALL FURNISH, MAINTAIN, AND REMOVE ALL CONSTRUCTION TRAFFIC CONTROL SIGNS, FLAGS, FLAGGERS, LIGHTING, BARRICADES, SIGN SUPPORTS, CONES AND INCIDENTALS IN CONFORMANCE WITH THE "OHIO MANUAL OF UNIFORM TRAFFIC CONTROL DEVICES FOR STREETS AND HIGHWAYS."

WHENEVER ANY TRAVELED SURFACE IS BEING WORKED ON OR OTHERWISE NOT SUITABLE FOR SAFE AND CONVENIENT USE BY VEHICLES, TRAFFIC CONTROL DEVICES SUFFICIENT TO PROTECT SUCH AREAS AND TO ASSURE THE SAFE PASSAGE FOR VEHICULAR TRAFFIC SHALL BE INSTALLED AND MAINTAINED. SUCH TRAFFIC CONTROL DEVICES, AND THE MANNER IN WHICH THEY ARE USED, SHALL BE CONSISTENT WITH THESE PLANS AND THE OHIO MANUAL OF UNIFORM TRAFFIC CONTROL DEVICES FOR STREETS AND HIGHWAYS, HEREINAFTER REFERRED TO AS THE MANUAL. THE TRAFFIC CONTROL DEVICE SYSTEM CONTAINED HEREIN SHALL CONSTITUTE THE MINIMUM PROVISIONS FOR TRAFFIC CONTROL FOR EACH PARTICULAR SITUATION. WHENEVER THE ENGINEER DEEMS IT NECESSARY, HE MAY DIRECT THAT ADDITIONAL OR ALTERNATIVE DEVICES BE USED. NO ADDITIONAL COMPENSATION SHALL BE MADE TO THE CONTRACTOR FOR THESE ADDITIONAL OR ALTERNATIVE MEASURES.

TRAFFIC CONTROL DEVICES SHALL BE SET UP PRIOR TO THE START OF CONSTRUCTION, AND SHALL BE PROPERLY MAINTAINED DURING THE TIME SUCH SPECIAL CONDITIONS EXIST. THEY SHALL REMAIN IN PLACE ONLY AS LONG AS THEY ARE NEEDED AND SHALL BE IMMEDIATELY REMOVED THEREAFTER. WHERE OPERATIONS ARE PERFORMED IN PHASES, THERE SHALL BE IN PLACE ONLY THOSE DEVICES THAT APPLY TO THE CONDITION PRESENT DURING THE PHASE IN PROGRESS. ALL SIGNS WITH MESSAGES WHICH DO NOT APPLY DURING A CERTAIN PERIOD SHALL BE COVERED OR SET ASIDE OUT OF THE VIEW OF TRAFFIC.

IN ADDITION TO THE REQUIREMENTS OF 614.05 OF THE CMS, THE CONTRACTOR SHALL FURNISH, ERECT, MAINTAIN, AND SUBSEQUENTLY REMOVE SUCH ADDITIONAL TRAFFIC CONTROL DEVICES LOCATED OUTSIDE OF THE LIMITS OF CONSTRUCTION AS ARE REQUIRED ON HIGHWAYS WHICH ARE USED AS DETOURS, INCLUDING THE ROAD CLOSED SIGNS UPON THE BARRICADES AT THE POINT WHERE THE HIGHWAY IS CLOSED.

PAYMENT FOR ALL LABOR, MATERIALS, EQUIPMENT AND ANY INCIDENTALS REQUIRED TO COMPLETE THE WORK AS DESCRIBED HEREIN, SHALL BE INCLUDED IN THE LUMP SUM BID FOR ITEM 614 - MAINTAINING TRAFFIC.



CONSTRUCTION PERIOD

A 10 CALENDAR DAY TIME LIMIT SHALL BE ENFORCED ON THE HENDRICKS ROAD DETOUR. ROAD USER COSTS EQUAL TO LIQUIDATED DAMAGES (\$7,500 PER DAY) SHALL BE ENFORCED.