

**DIMENSION OF MODIFIED TYPE "A" HEADWALL**  
H = 7'-11"  
L = 20'-3"  
A = 1'-3"

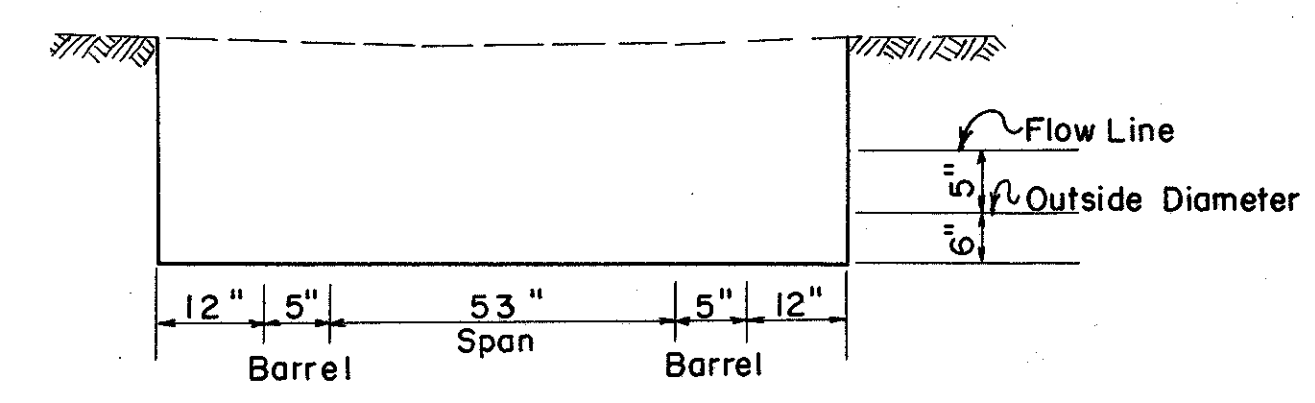
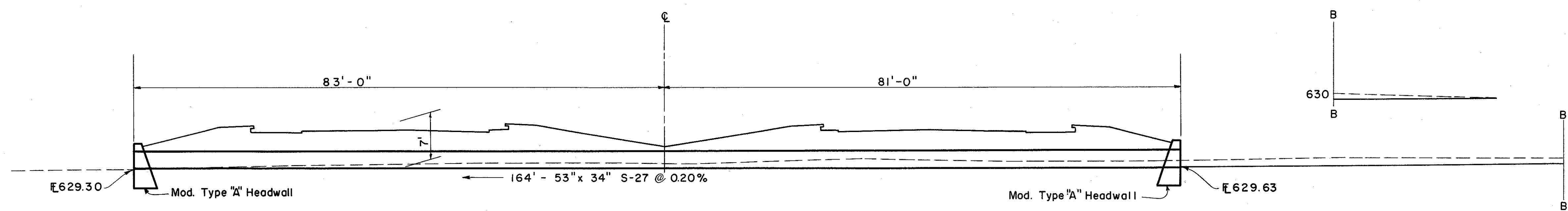
AREA = 52 ACRES  
Q<sub>25</sub> = 47 C.F.S.

HEADWATER = 2.74 FT.  
OUTLET VELOCITY = 5.5 FPS.

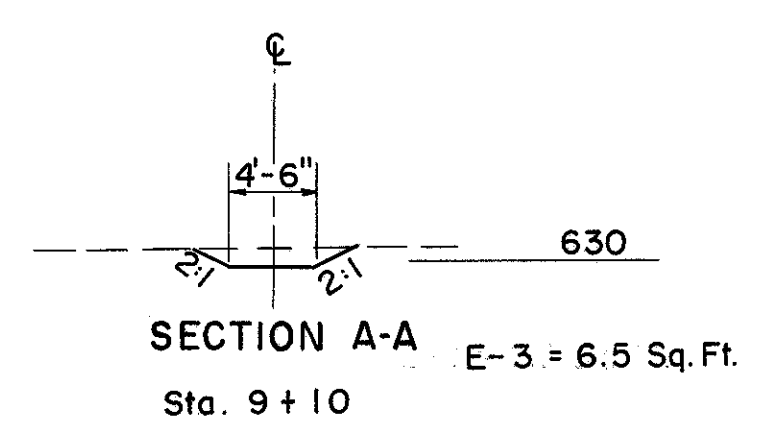
**ESTIMATED QUANTITIES**

* E-2	Excavation for Structures	114 C.Y.
E-3	Channel Excavation	6 C.Y.
L-10	Sodding	9 S.Y.
S-1	Concrete for Structures Class "C"	234 C.Y.
S-4	Reinforcing Steel	738 Lbs.
S-27	53"x 34" Pipe for Roadway Culverts Sec. M-206.6 (b)	164 L.F.

\* Includes excavation for headwalls



METHOD OF ESTIMATING E-2, EXCAVATION FOR STRUCTURES



**CULVERT DATA**  
TYPE: S-27 Sec. M-206.6 (b)  
SIZE: 164' - 53" x 34"  
**WORK REQUIRED:** Build a pipe culvert with modified type "A" headwalls. Place sodding rt. and lt. and excavate channel on Rt. as shown.