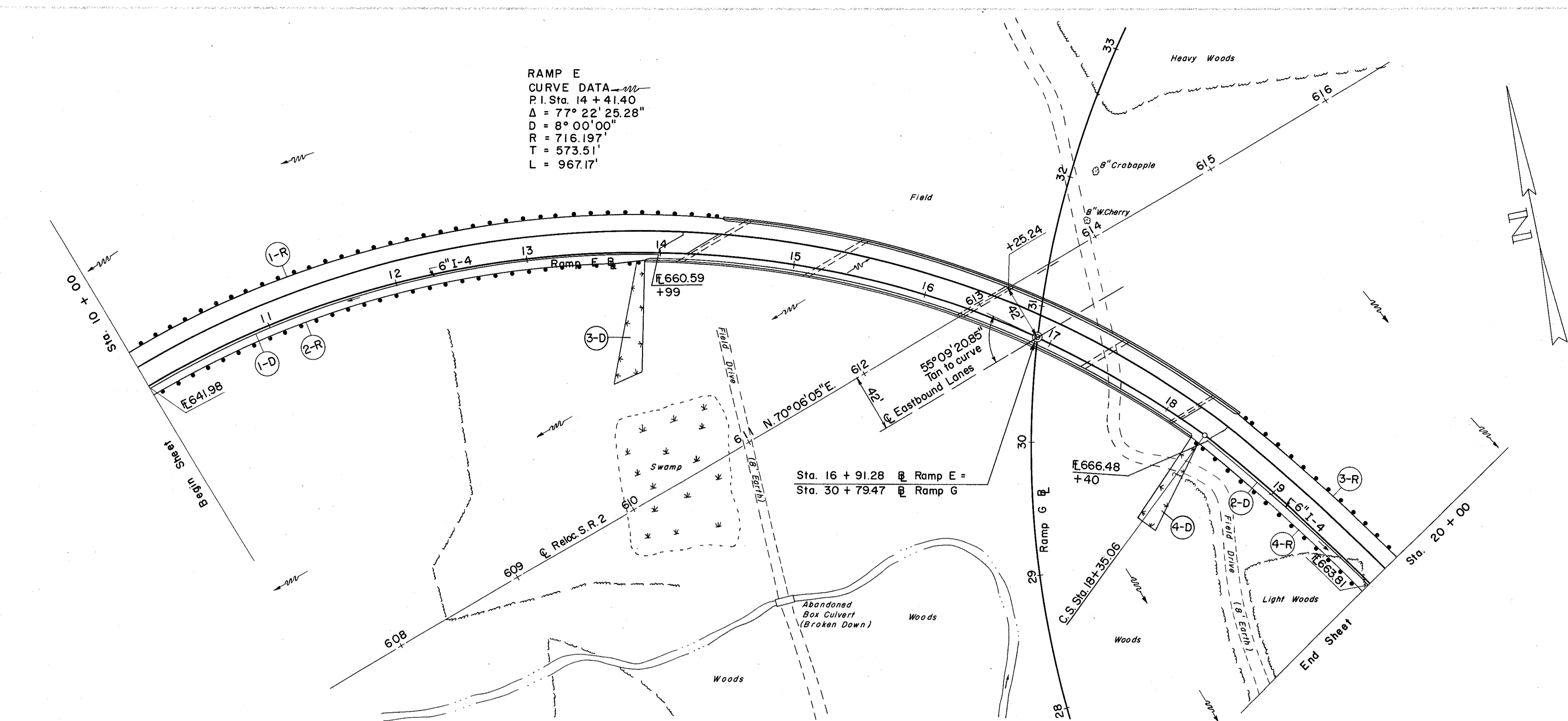


RAMP E  
CURVE DATA  
P.I. Sta. 14 + 41.40  
 $\Delta = 77^\circ 22' 25.28''$   
 $D = 8^\circ 00' 00''$   
 $R = 716.197'$   
 $L = 967.17'$



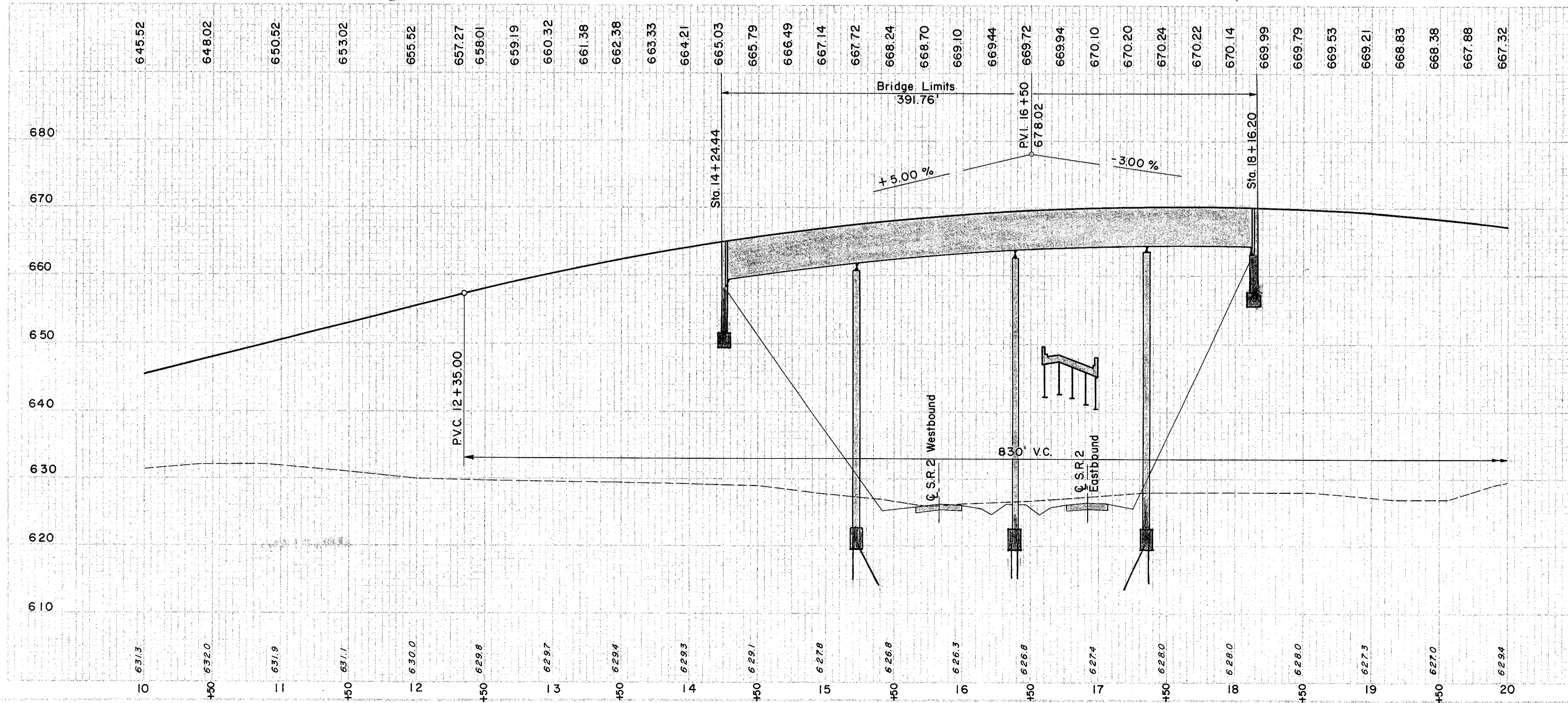
(R) ROADWAY

REF. NO.	STATION		SIDE	I-15 GUARD RAIL STEEL BEAM STD. TYPE (DEEP)
	FROM	TO		
1-R	9+98	14+47	LT.	462.5
2-R	9+95	13+90	RT.	387.5
3-R	18+45	19+91	LT.	150.0
4-R	18+27	19+90	RT.	162.5
TOTAL				1162.5

(D) DRAINAGE

REF. NO.	STATION		SIDE	I-4 6" PIPE UNDER-DRAIN (SHALLOW)	L-10 SODDING FOR SPECIAL BERM & SLOPE PROTECT. S.Y.
	FROM	TO			
1-D	10+00	13+99	RT.	399	
2-D	18+40	20+00	RT.	160	
3-D	13+85		RT.		124
4-D	18+28		RT.		92

FOR PAVEMENT QUANTITIES,  
SEE SHEET NO. 201



FOR PAVEMENT QUANTITIES,  
SEE SHEET NO. 201

**PROPOSED STRUCTURE**  
 TYPE: Four (4) Span Continuous Plate Girder with Reinforced Conc. Deck and Substructure.  
 SPANS: 33'-6", 116'-9", 97'-3", 77'-9"  
 ROADWAY: 34'-0" F/F Parapets, 1'-2" Curb  
 LOAD FREQUENCY: CF 2000, Adequate for AASHTO Alternate Loading.  
 SKEW: 34° 50' 39.15" Rt.  
 WEARING SURFACE: 1" Monolithic Concrete  
 APPROACH SLABS: 25' Long. AS-1-54  
 ALIGNMENT: 8° 00' 00" Curve Rt.  
 SUPERELEVATION: 1" per Ft.  
 TRAFFIC COUNT: 5560 A.D.T. 1975

MICROFILMED  
JUL 1 1985

EXCAVATION	5,652 C.Y.
EMBANKMENT	73,828 C.Y.
EMBANKMENT @ 20'	88,594 C.Y.