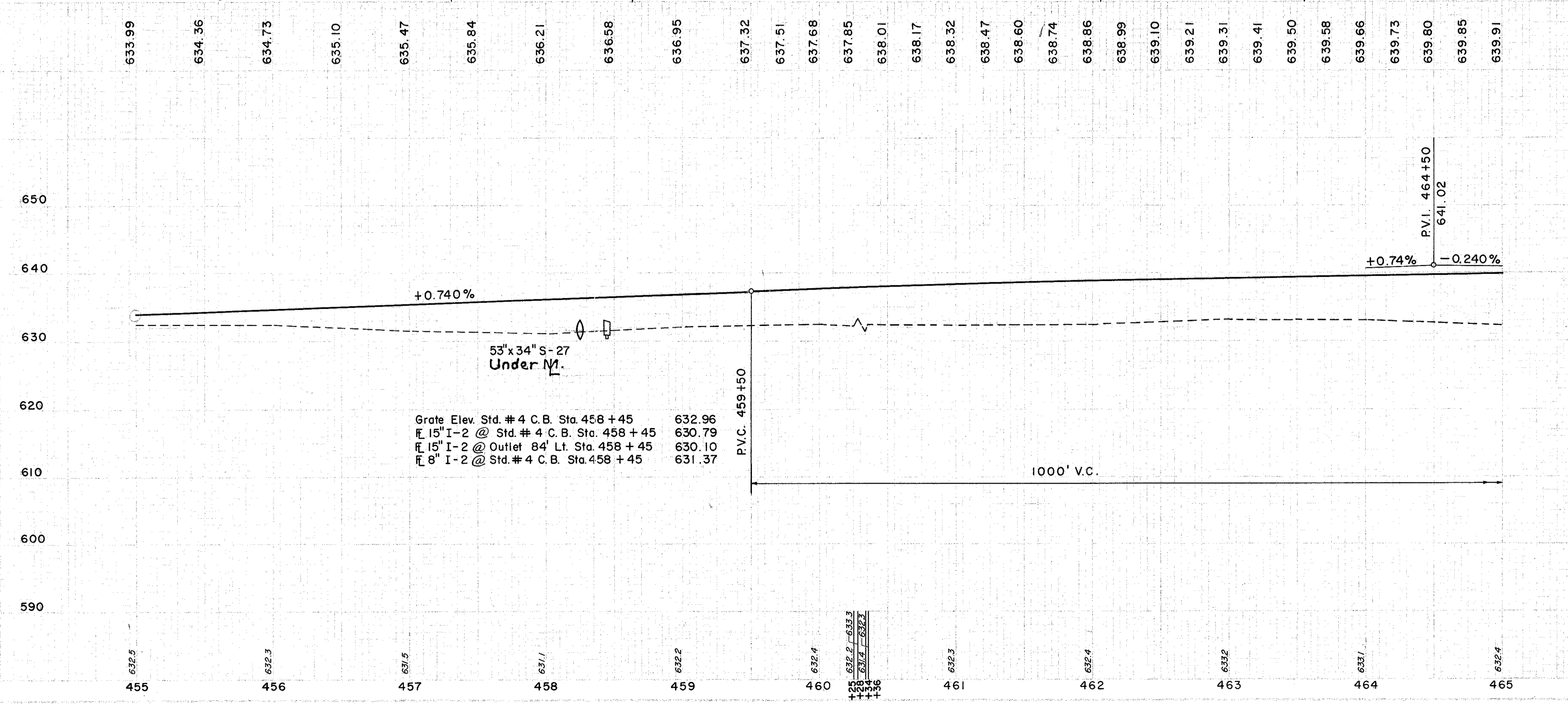
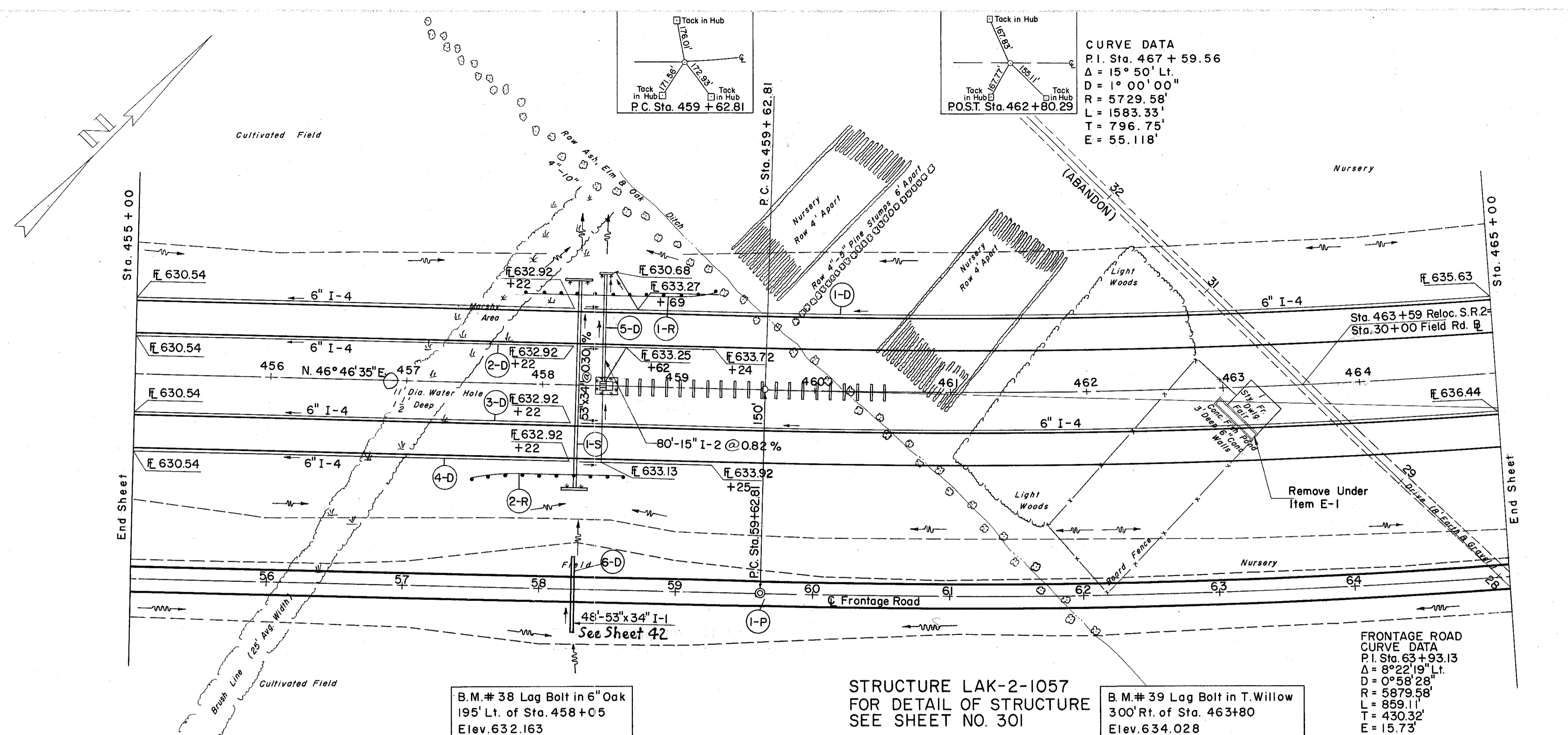


LAKE COUNTY  
LAK-2-10.35



**(D) DRAINAGE**

REF. NO.	STATION	DESCRIPTION	QTY.	UNIT
I-2	458+25 TO 459+25	CL. 15" STM. SWR UNDER PAVT SEC. M-6.5(b) OR M-6.8(b)	80	L.F.
I-4	458+25 TO 459+25	6" UNDER-PIPE DRAIN SEC. M-64(c) SHALLOW	10	L.F.
I-4	458+25 TO 459+25	8" OUTLET PIPE UNDER-PIPE DRAIN SEC. M-64(g)	10	L.F.
I-5	458+25 TO 459+25	6" x 8" INCR. TEE EASER (M-65(b))	1	EA.
I-8	458+25 TO 459+25	STD. #4 CATCH BASIN	1	EA.
S-1	458+25 TO 459+25	CONC. FOR STRUCT. CL. C	3.1	C.Y.
S-4	458+25 TO 459+25	REINF. FOR STRUCT.	146	LB.
E-2	458+25 TO 459+25	EXC. FOR STRUCT.	6	C.Y.
L-10	458+25 TO 459+25	SODDING	57	S.Y.
I-10	458+25 TO 459+25	53' x 34" PIPE FOR DRIVEWAYS	1	L.F.
I-1	458+25 TO 459+25	48		

**(S) STRUCTURES**

REF. NO.	STATION	DESCRIPTION	QTY.	UNIT
E-2	458+25 TO 459+25	EXC. FOR STRUCT.	76	C.Y.
E-3	458+25 TO 459+25	CHANNEL EXC.	33	C.Y.
L-10	458+25 TO 459+25	SODDING	9	S.Y.
S-1	458+25 TO 459+25	CONC. FOR STRUCT. CL. C	23.4	C.Y.
S-4	458+25 TO 459+25	REINF. FOR STRUCT.	7.38	LB.
I-10	458+25 TO 459+25	53' x 34" PIPE FOR CULVERTS	1.58	L.F.

**(P) PAVEMENT**

REF. NO.	STATION	DESCRIPTION	QTY.	UNIT
I-15	457+50 TO 458+25	GUARD RAIL STD. TYPE (DEEP)	137.5	L.F.
I-19	457+50 TO 458+25	CRUSHED SUB-BASE COURSE	277.80	C.Y.
M-10	457+50 TO 458+25	CALCIUM CHLORIDE SUBGR.	1.00	TONS
E-1	457+50 TO 458+25	EXC. FOR SUBGR.	2000.00	S.Y.

EXCAVATION	1,910 C.Y.
PAVEMENT	24,789 C.Y.
EQUIPMENT	20
TOTAL	29,747 C.Y.