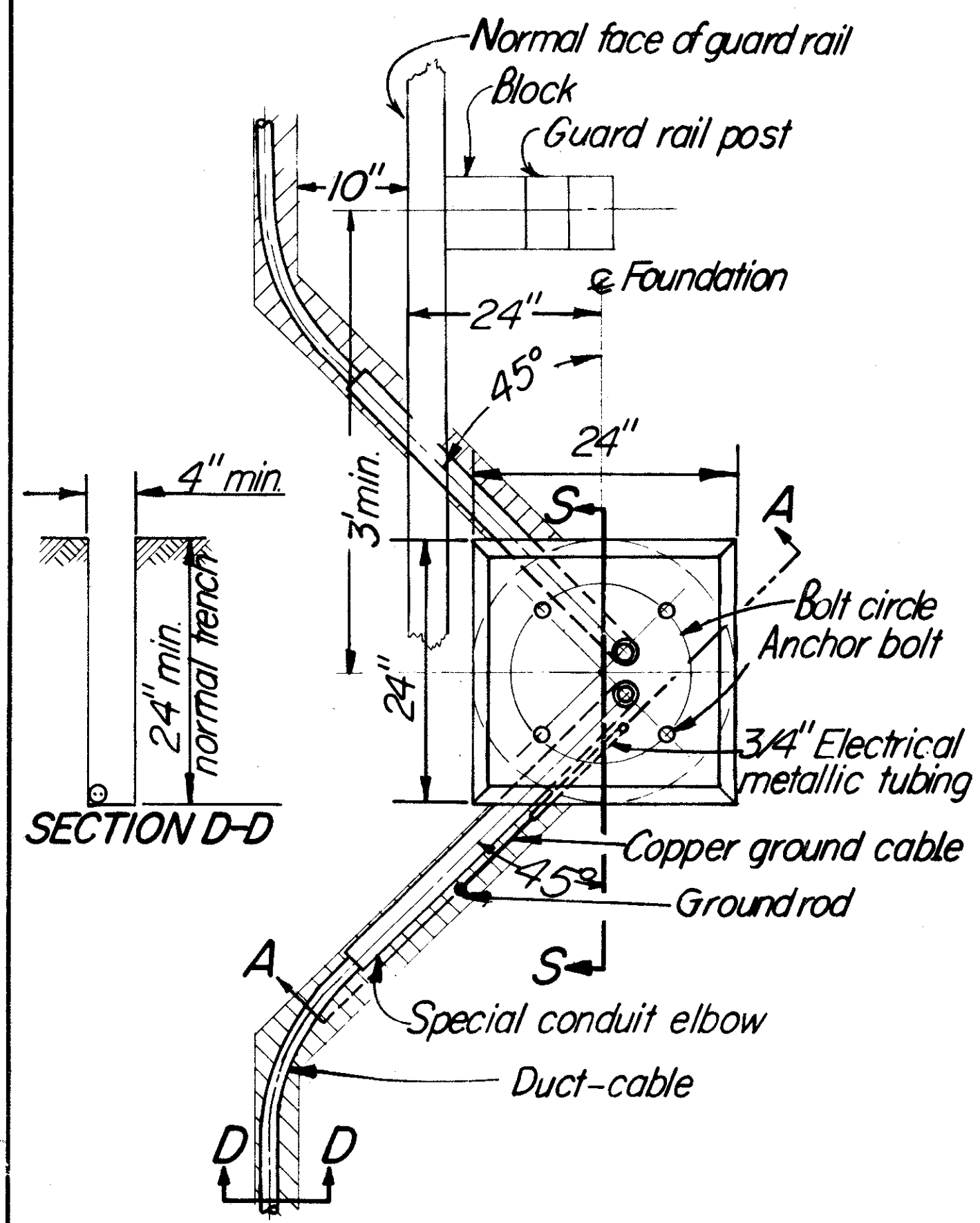


FOUNDATION AND TRENCH DETAILS

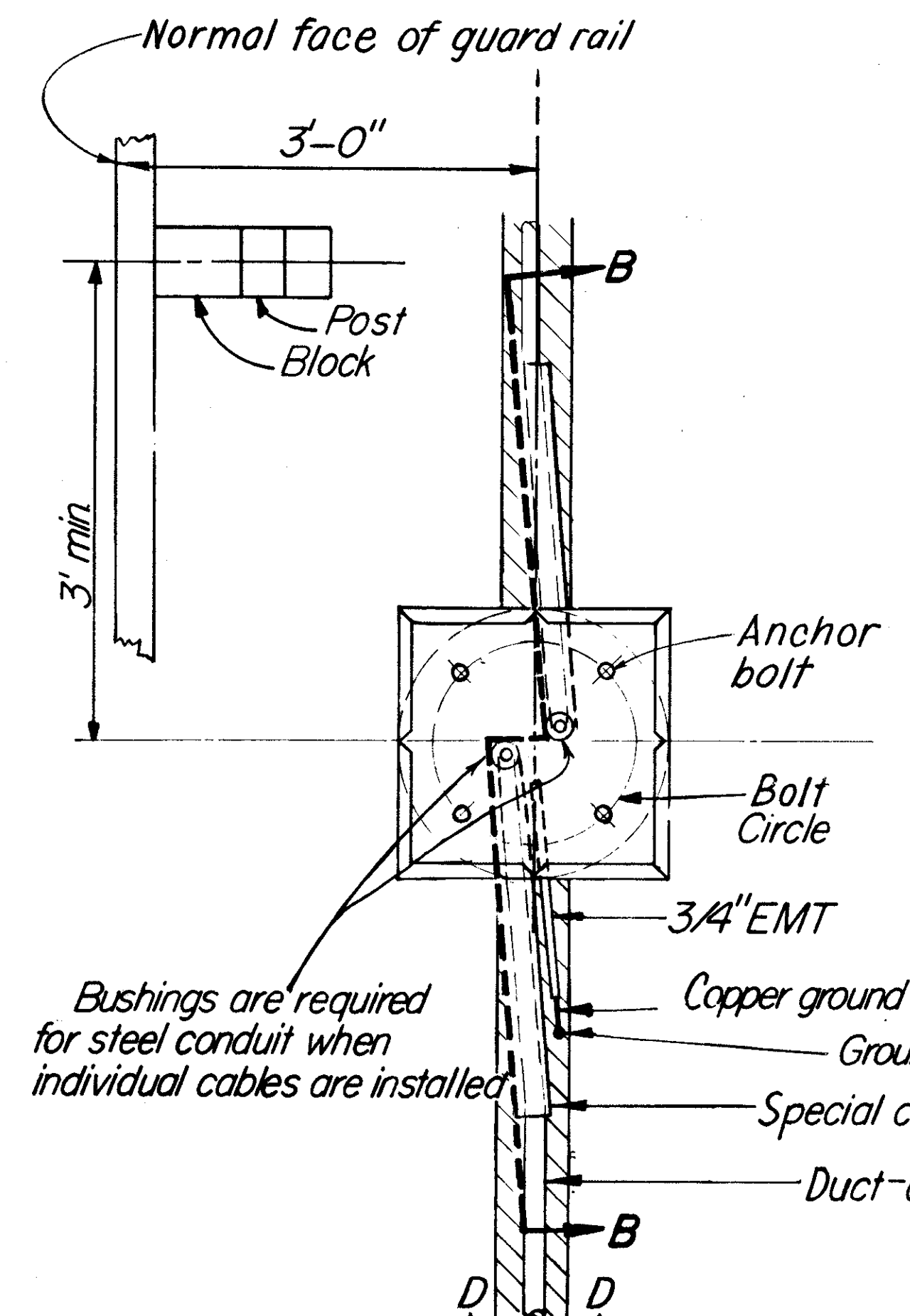
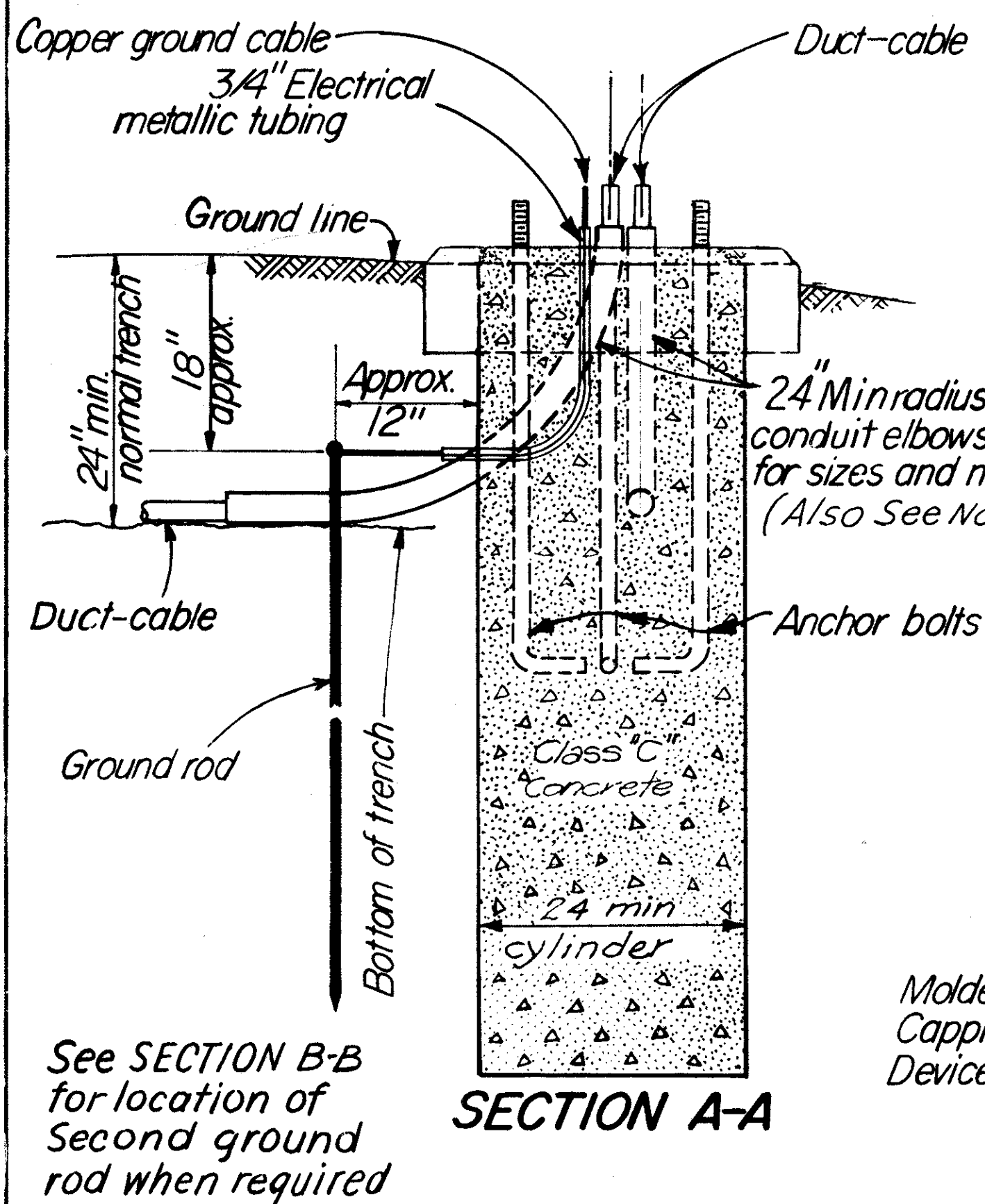
LAKE COUNTY
LAK-2-1.80

FED. RD. DIVISION	STATE	PROJECT
2	OHIO	

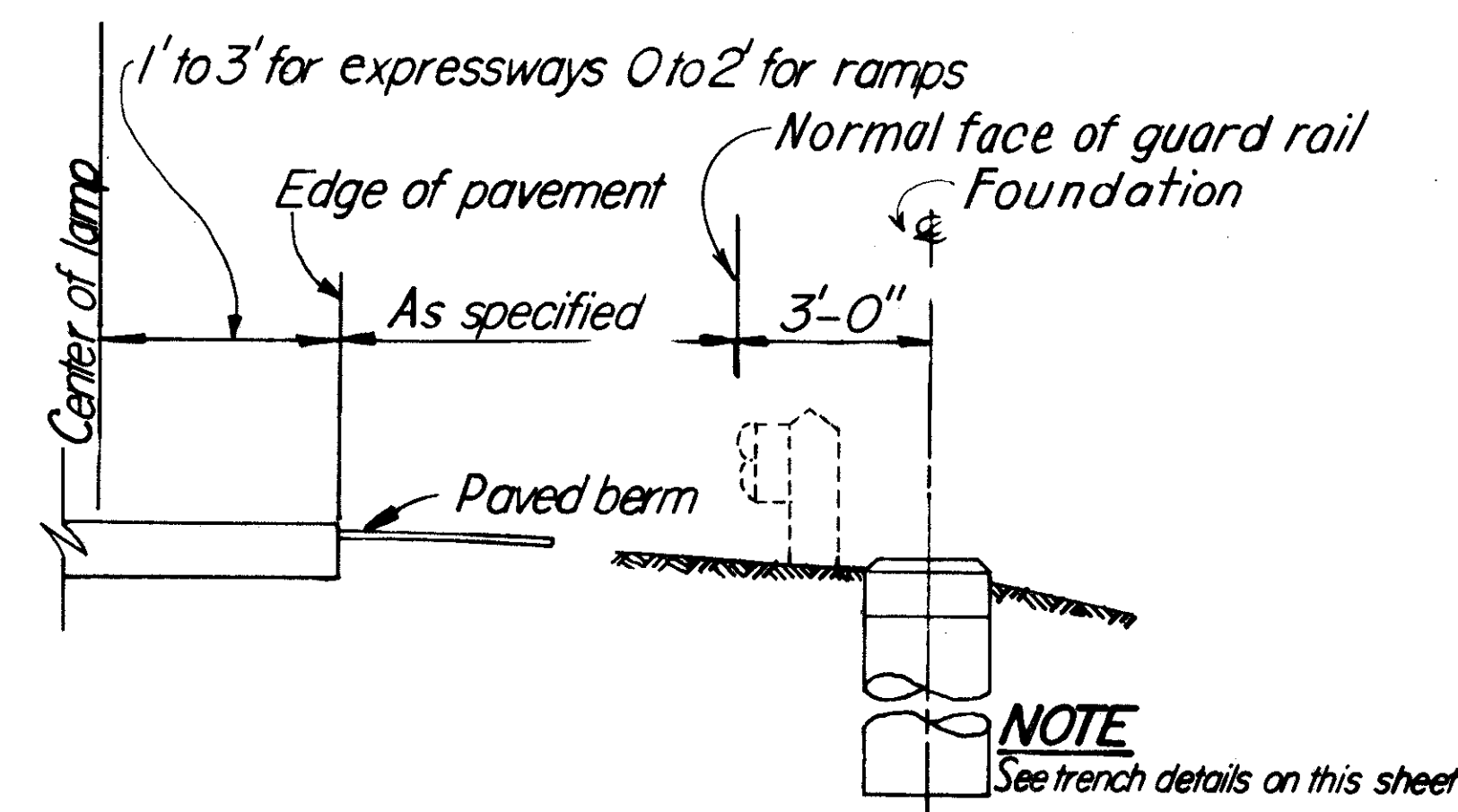
39
57



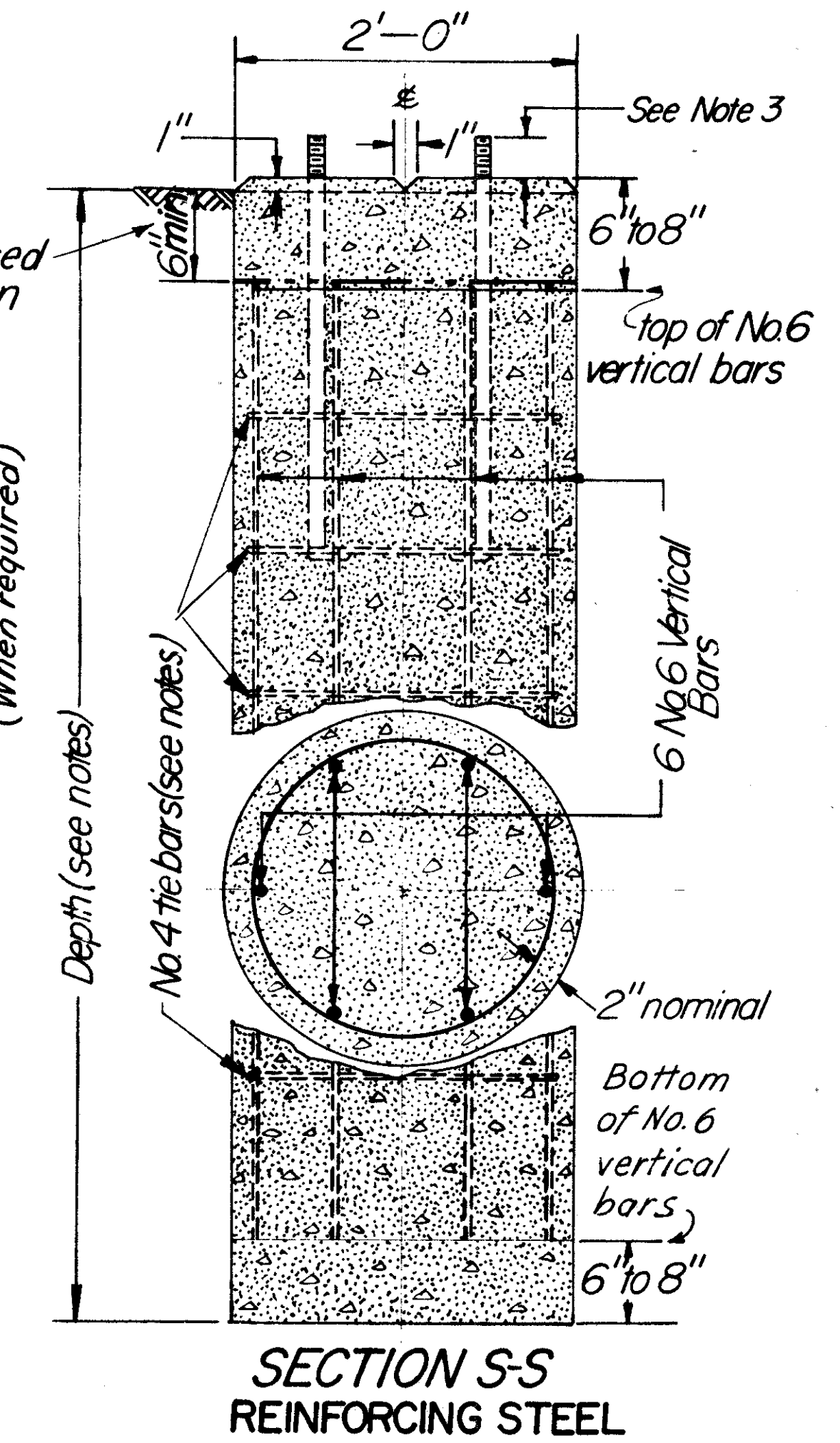
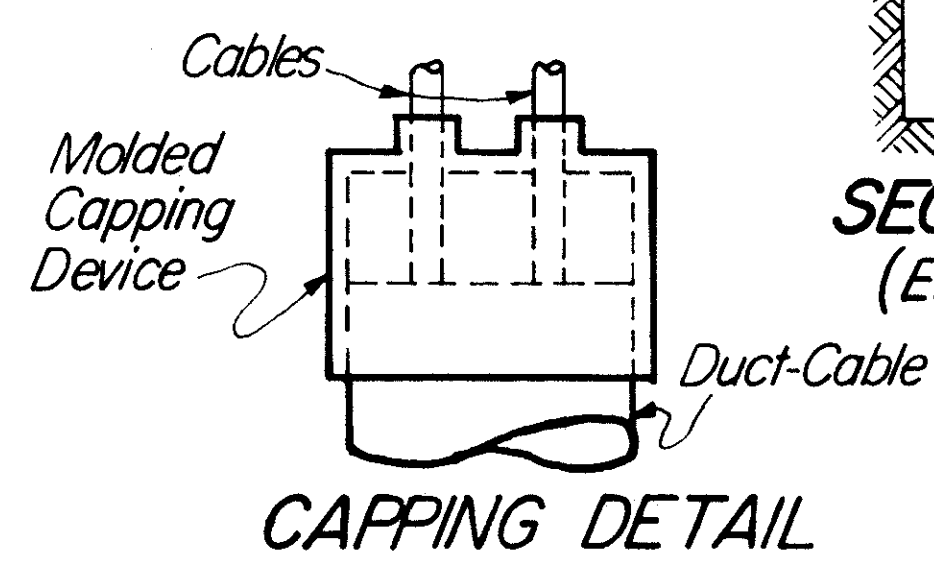
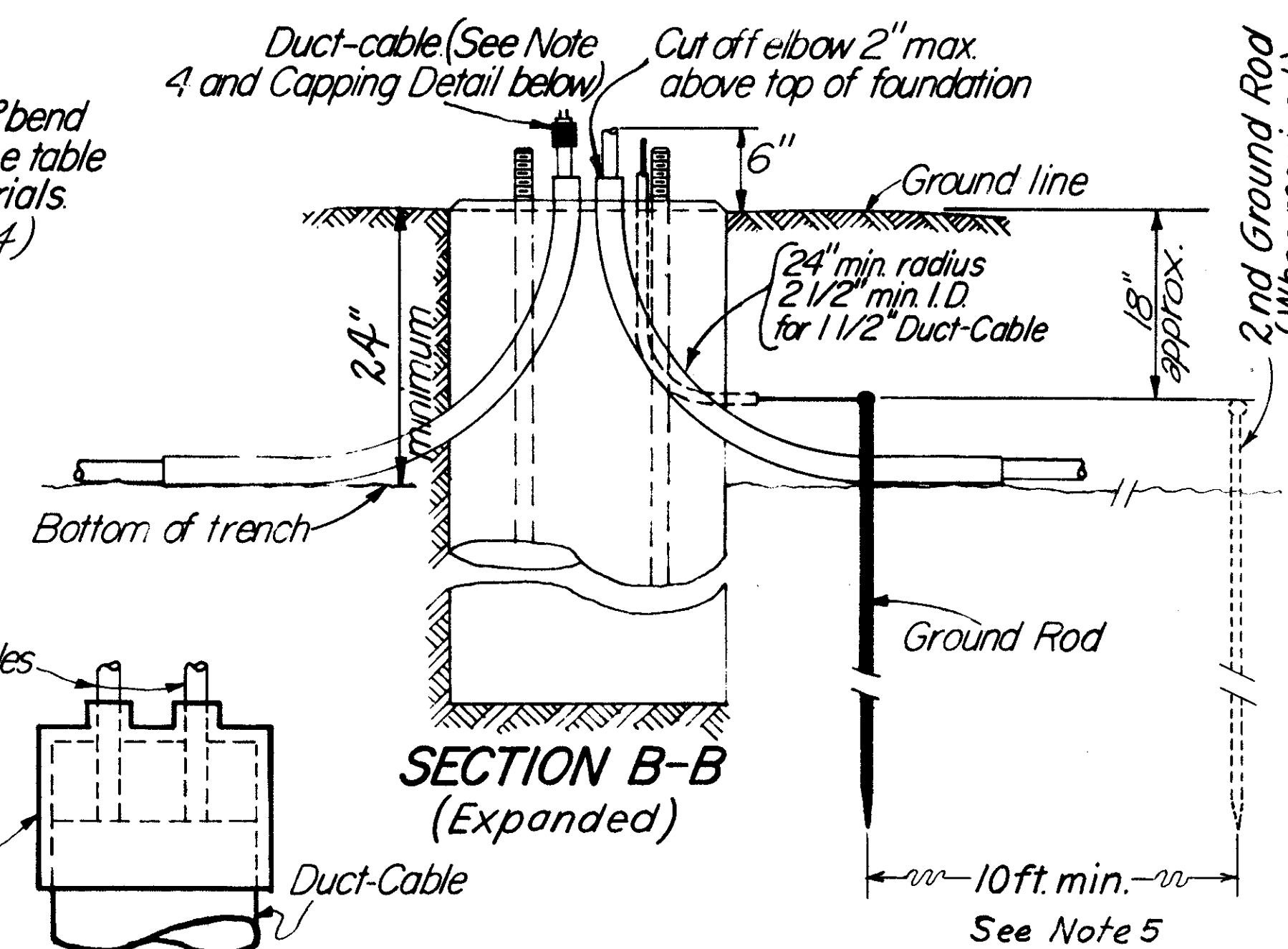
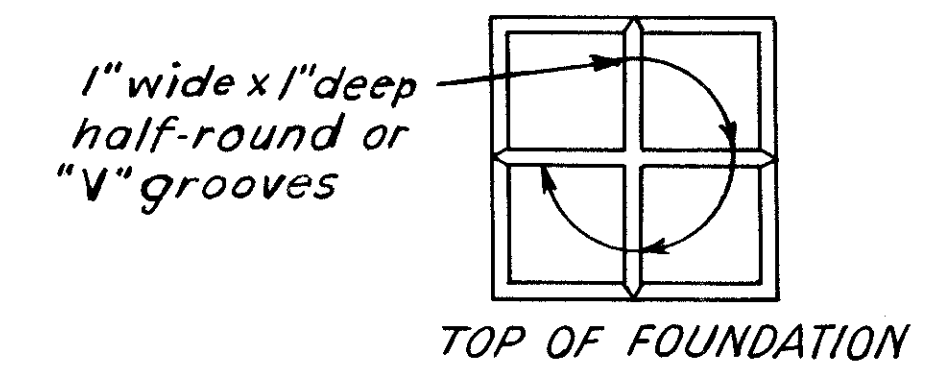
TYPE 1 TRENCH ALIGNMENT
(Use when specified or directed by the Engineer)



TYPE 2 TRENCH ALIGNMENT (NORMAL)



NORMAL LOCATION OF LIGHT POLE FOUNDATION
Opposite hand for poles mounted on left side of pavement.



R = bending radius
S = straight section
Y = R + S

SPECIAL CONDUIT ELBOWS 90° BENDS					
2" 2 1/2" 3" 71304 3"-71305 or 71306					
R	S	Y	R	S	Y
24"	11"	35"	24"	8"	32"
30"	11"	41"	36"	2"	38"
42"	12"	54"			
48"	12"	60"			

NOTES

- FOUNDATION**
Depths to be as follows:
6 feet for poles having a mounting height less than 40ft.
8 feet for poles having a mounting height 40ft. thru 44 ft.
9 feet for poles having a mounting height 45 ft. thru 49 ft.
10 feet for poles having a mounting height of 50ft. thru 55 ft.
No. 4 Tie bars required as follows:
4 No. 4 tie bars for 6ft. depth
5 No. 4 tie bars for 8 and 9ft. depth
6 No. 4 tie bars for 10 ft. depth
Rotate bars to clear conduits.
- COPPER GROUND CABLE:**
No. 4 AWG, stranded insulated copper ground cable shall be used. Exothermically weld cable to ground rod, run free end through 3/4" EMT and connect as shown on "POLE WIRING."
Use two coats of insulating varnish over exothermic weld and exposed conductor.
- ANCHOR BOLT DATA:**
For anchor bolt data see "POLE BASE DETAILS."
- CONDUIT:**
Where 2" or 3" diameter conduit terminates in a foundation the conduit elbows in the foundation shall be the same size as the conduit. The ends of conduit elbows containing distribution cable shall be closed as described in 625.13
When the terminating conduit is steel the conduit elbows in the pole foundation shall also be steel.
At the last light pole on a circuit the vacant conduit elbow in the light pole foundation shall be stubbed out and capped.
- GROUND RODS:**
When a second ground rod is required it shall be installed in the cable trench as shown in SECTION B-B.
- REINFORCING STEEL:**
Reinforcing steel may be assembled in cages by approved welding of bars.