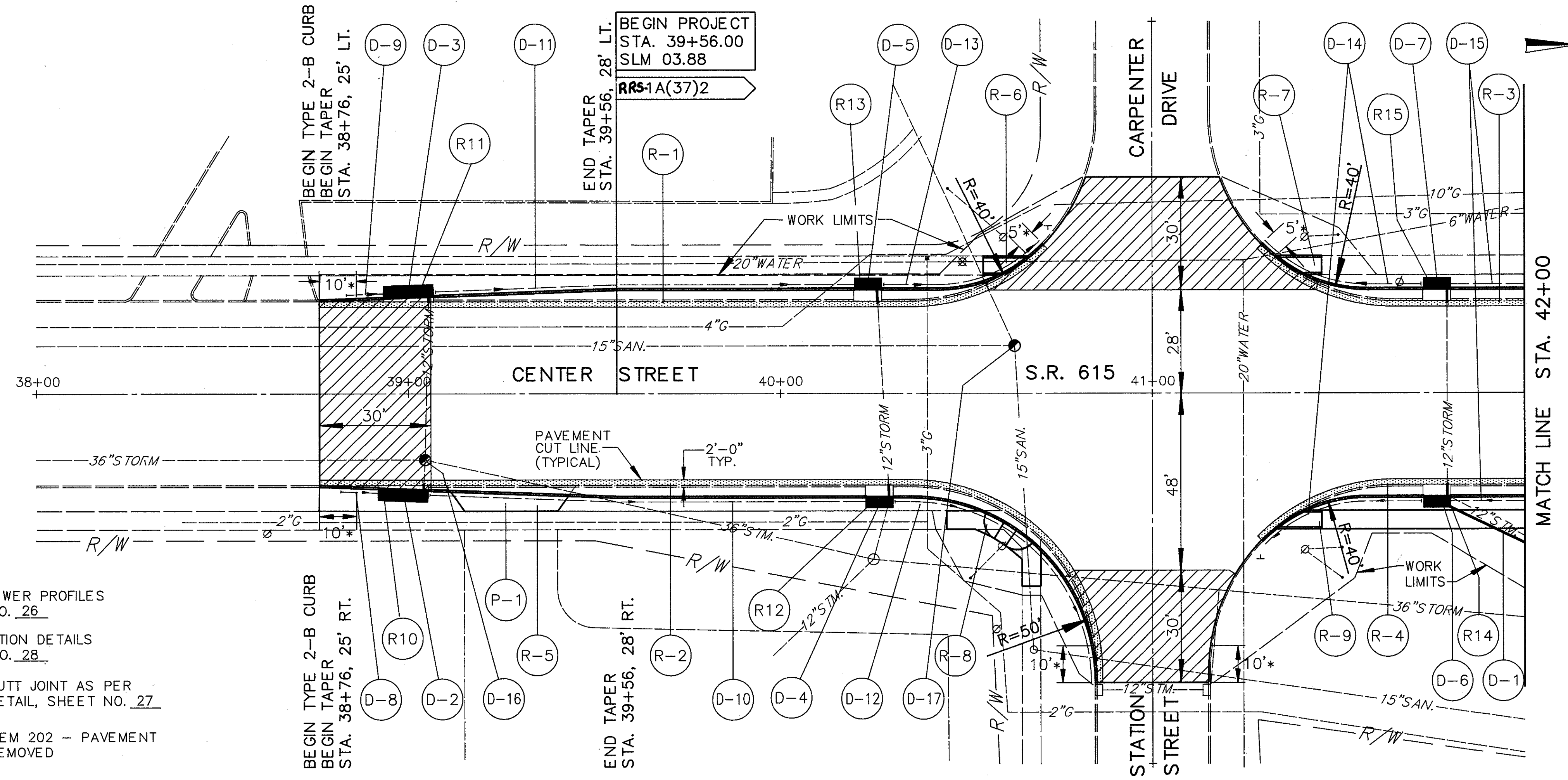


BEGIN WORK
 STA. 36+30



MATCH LINE STA. 42+00

FOR STORM SEWER PROFILES
 SEE SHEET NO. 26

FOR INTERSECTION DETAILS
 SEE SHEET NO. 28

- BUTT JOINT AS PER DETAIL, SHEET NO. 27
- ITEM 202 - PAVEMENT REMOVED

NOTE: UTILITY POLE RELOCATION BY OTHERS

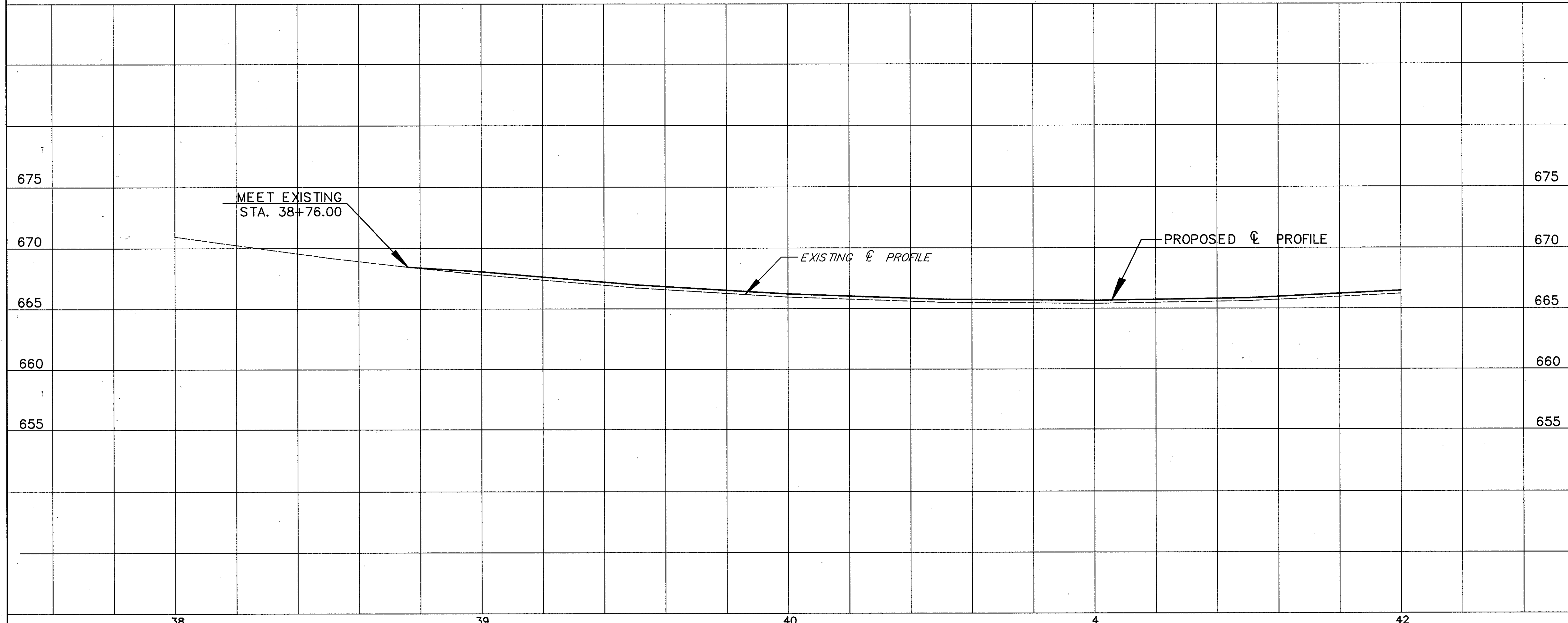
* 707.17 NON PERFORMED ASTM 3034 SDR 35, SS 931

* TAPER CURB HEIGHT TO MATCH EXISTING

ITEM	DESCRIPTION	UNIT	QUANTITY
605	6" SHALLOW PIPE UNDERDRAIN	L.F.	440
604	MANHOLE ADJUSTED TO GRADE (SANITARY)	EACH	1
604	MANHOLE ADJUSTED TO GRADE (STORM)	EACH	1
604	INLET, NO. 1-2A-12 AS PER PLAN	EACH	2
604	INLET, NO. 1-2A-6 AS PER PLAN	EACH	4
603	12" CONDUIT, TYPE C	L.F.	24
603	12" CONDUIT, TYPE B	L.F.	3
603	6" CONDUIT, TYPE F	L.F.	26
TOTALS			60

QUANTITIES

REF.	LOCATION	QUANTITY
D-1	STA. 41+80, 30' RT. TO 42+00, 41' RT.	1
D-2	STA. 38+98.5, 25.8' RT.	1
D-3	STA. 39+00, 25.9' LT.	1
D-4	STA. 40+26.5, 28' RT.	1
D-5	STA. 40+23.5, 28' LT.	1
D-6	STA. 41+76.5, 28' RT.	1
D-7	STA. 41+76.5, 28' LT.	1
D-8	STA. 38+81 TO STA. 38+91, RT.	10
D-9	STA. 38+83.5 TO STA. 38+93.5, LT.	10
D-10	STA. 39+05 TO STA. 40+23, RT.	10
D-11	STA. 39+07 TO STA. 40+20, LT.	10
D-12	STA. 40+51 TO STA. 40+22, RT.	10
D-13	STA. 40+28 TO STA. 40+70, LT.	10
D-14	STA. 41+30 TO STA. 41+72, LT. & RT.	82
D-15	STA. 41+80 TO STA. 42-00, LT. & RT.	82
D-16	STA. 39+04, 18' RT.	20
D-17	STA. 40+63, 13' LT.	20
TOTALS		144



ITEM	DESCRIPTION	UNIT	QUANTITY
452	8" PLAIN CONCRETE PAVEMENT	S.Y.	15
608	CURB RAMP, TYPE 2	S.F.	100
608	CURB RAMP, TYPE 2	EACH	1
608	CURB RAMP, TYPE 1	EACH	1
608	4" CONCRETE WALK	S.F.	490
202	INLET REMOVED	EACH	6
202	WALK REMOVED	S.F.	595
202	PAVEMENT REMOVED (T=9")	S.Y.	155
TOTALS			155

QUANTITIES

REF.	LOCATION	QUANTITY
R-1	STA. 38+76 TO STA. 40+72, LT.	44
R-2	STA. 38+76 TO STA. 40+87, RT.	54
R-3	STA. 41+28 TO STA. 42+00, LT.	17
R-4	STA. 41+28 TO STA. 42+00, RT.	17
R-5	STA. 39+10 TO STA. 39+45, RT.	23
R-6	STA. 40+54 TO STA. 40+67, LT.	50
R-7	STA. 41+33 TO STA. 41+47, LT.	50
R-8	STA. 40+44 TO STA. 40+70, RT.	175
R-9	STA. 41+32 TO STA. 42+00, RT.	320
R-10	STA. 38+98.5, 25.8' RT.	1
R-11	STA. 39+00, 25.9' LT.	1
R-12	STA. 40+26.5, 28' RT.	1
R-13	STA. 40+23.5, 28' LT.	1
R-14	STA. 41+76.5, 28' RT.	1
R-15	STA. 41+76.5, 28' LT.	1
P-1	STA. 39+27, RT.	1
TOTALS		155