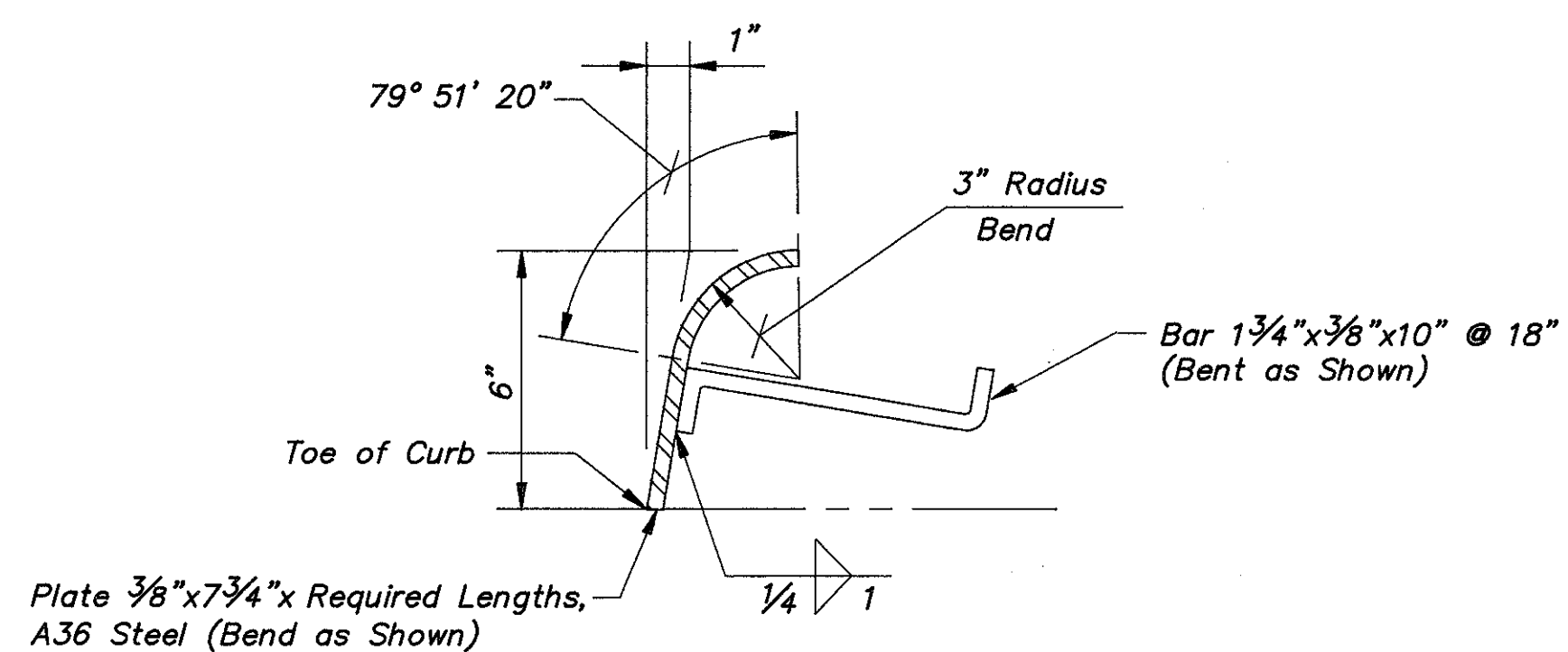


CURB PLATE DETAIL

LAK-2-0542
LAK-2-1029

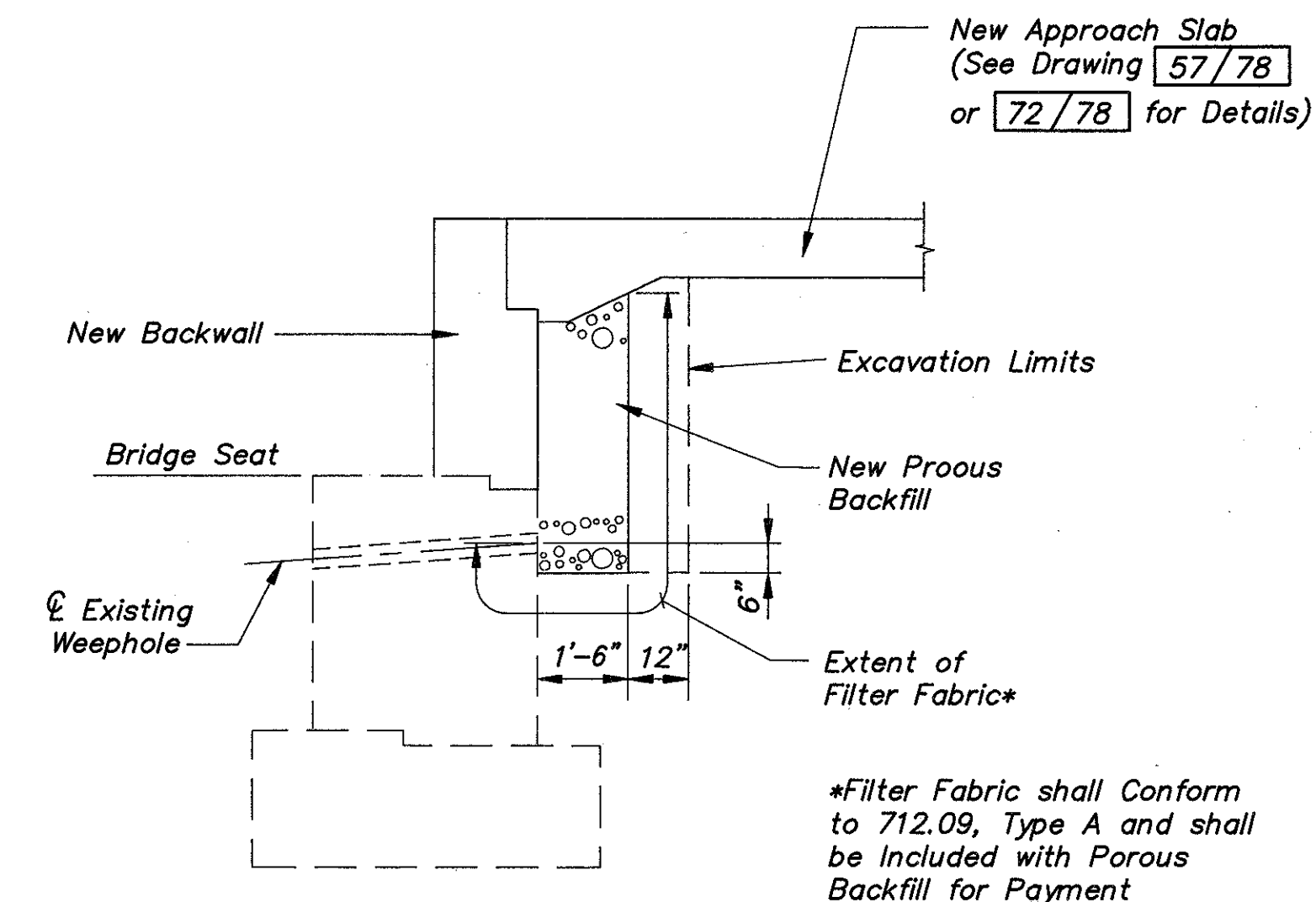
Note: Materials, Fabrication and Installation of Curb Plate at Sidewalk to be Included in Price Bid per Pound for Item 513-Structural Steel



MEDIAN CURB PLATE DETAIL

LAK-2-0542

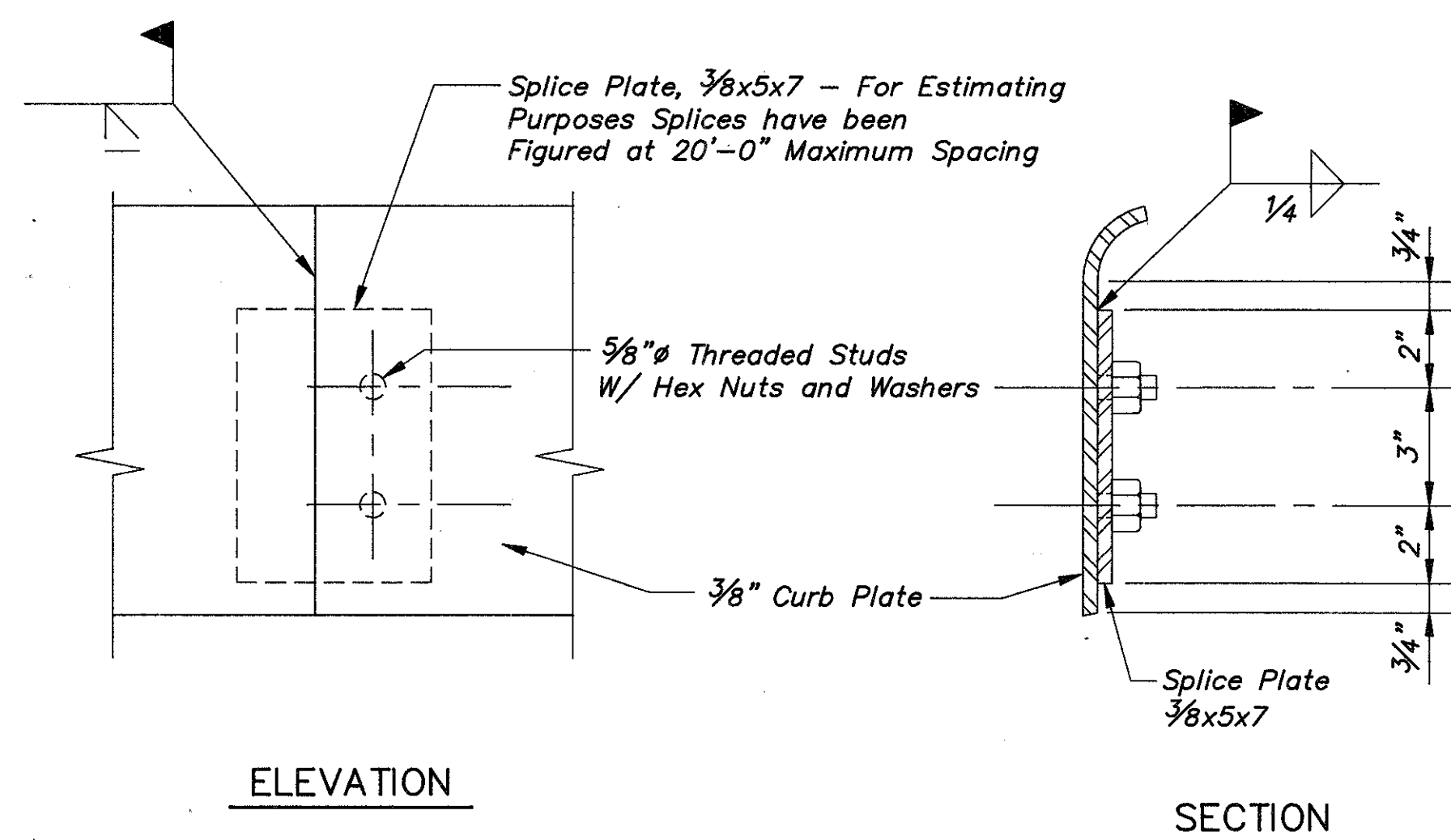
Note: Materials, Fabrication and Installation of Curb Plate at Median to be Included in Price Bid per Pound for Item 513-Structural Steel



EXCAVATION AND NEW POROUS BACKFILL LIMITS BEHIND NEW BACKWALLS

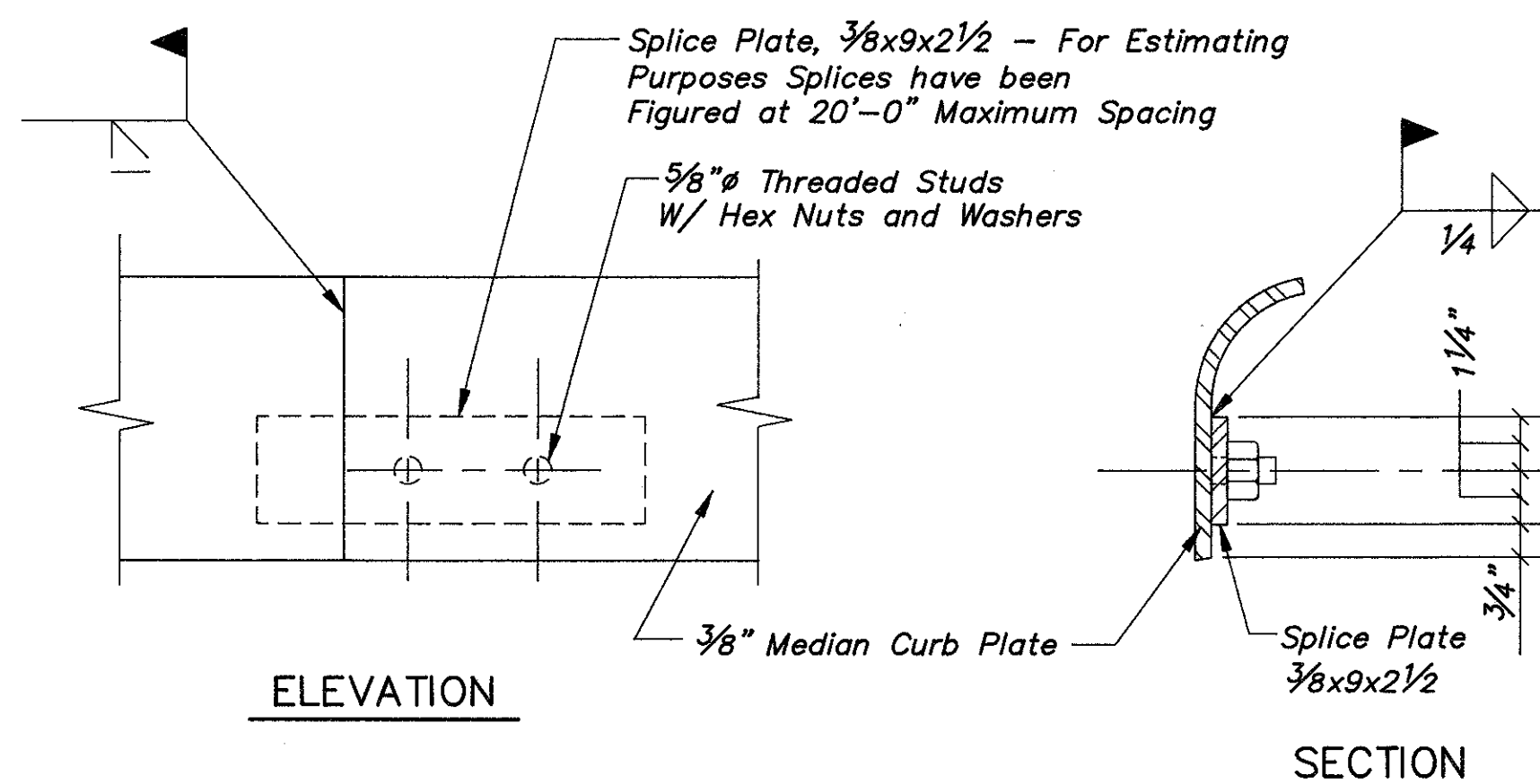
LAK-2-0542 FORWARD ABUTMENT
LAK-2-1029 REAR ABUTMENT

*Filter Fabric shall Conform to 712.09, Type A and shall be Included with Porous Backfill for Payment



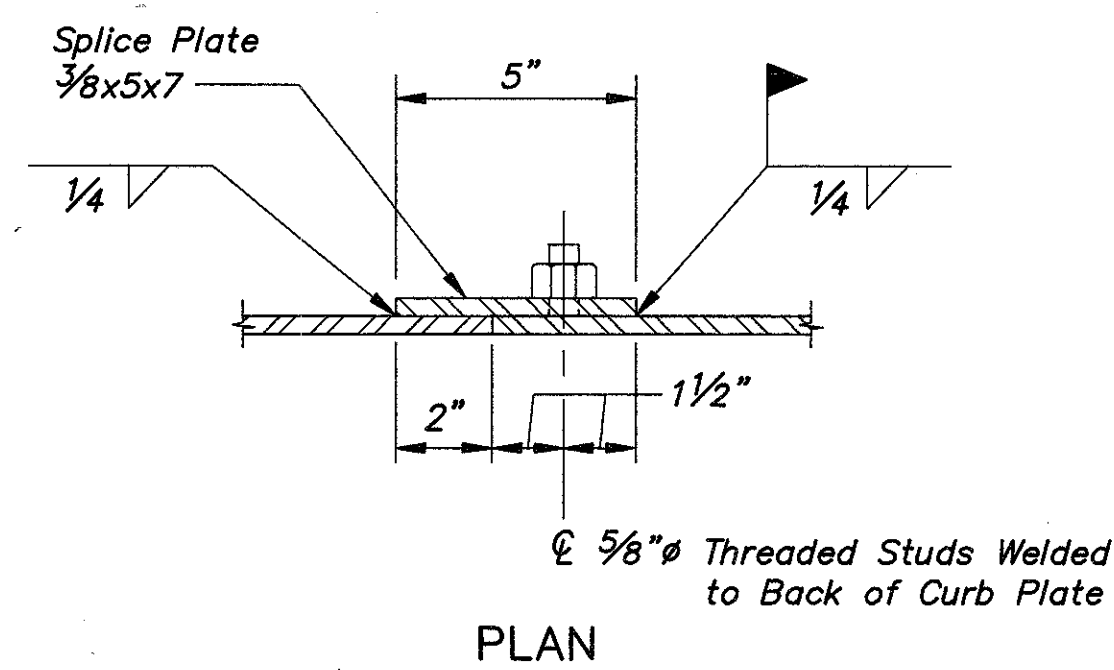
ELEVATION

SECTION

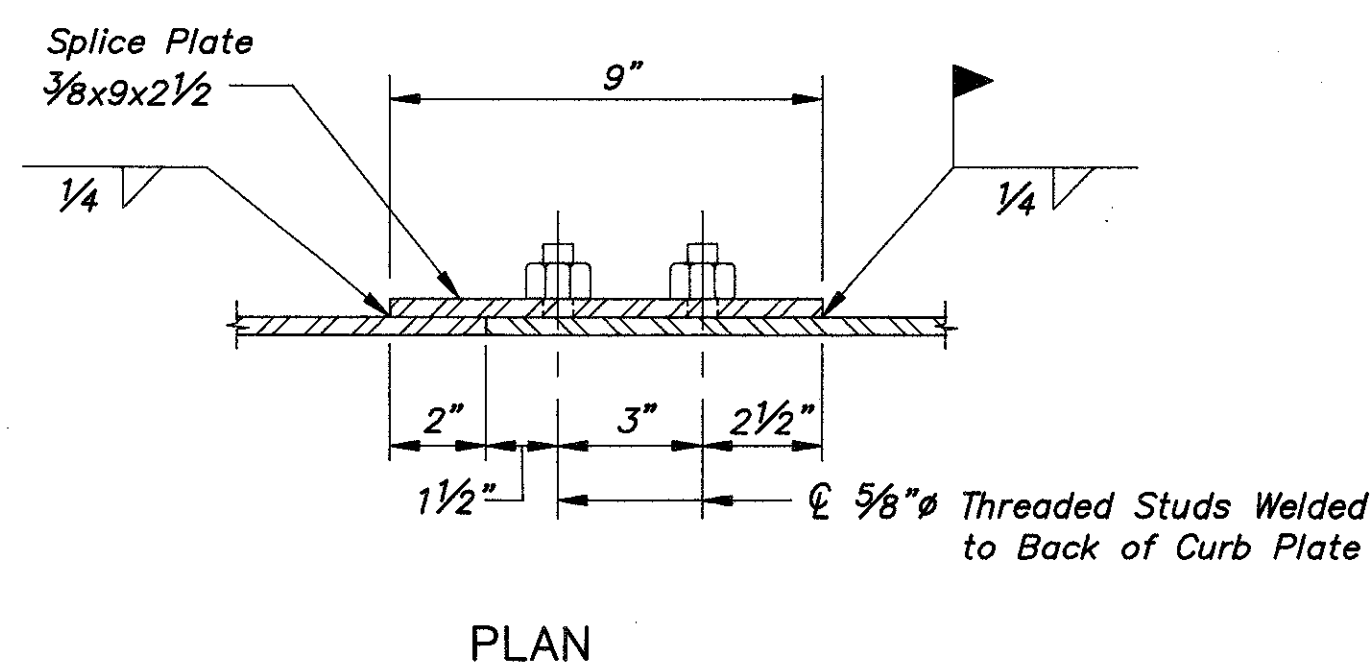


ELEVATION

SECTION



PLAN



PLAN

CURB PLATE SPLICE DETAILS

MEDIAN CURB PLATE SPLICE DETAILS