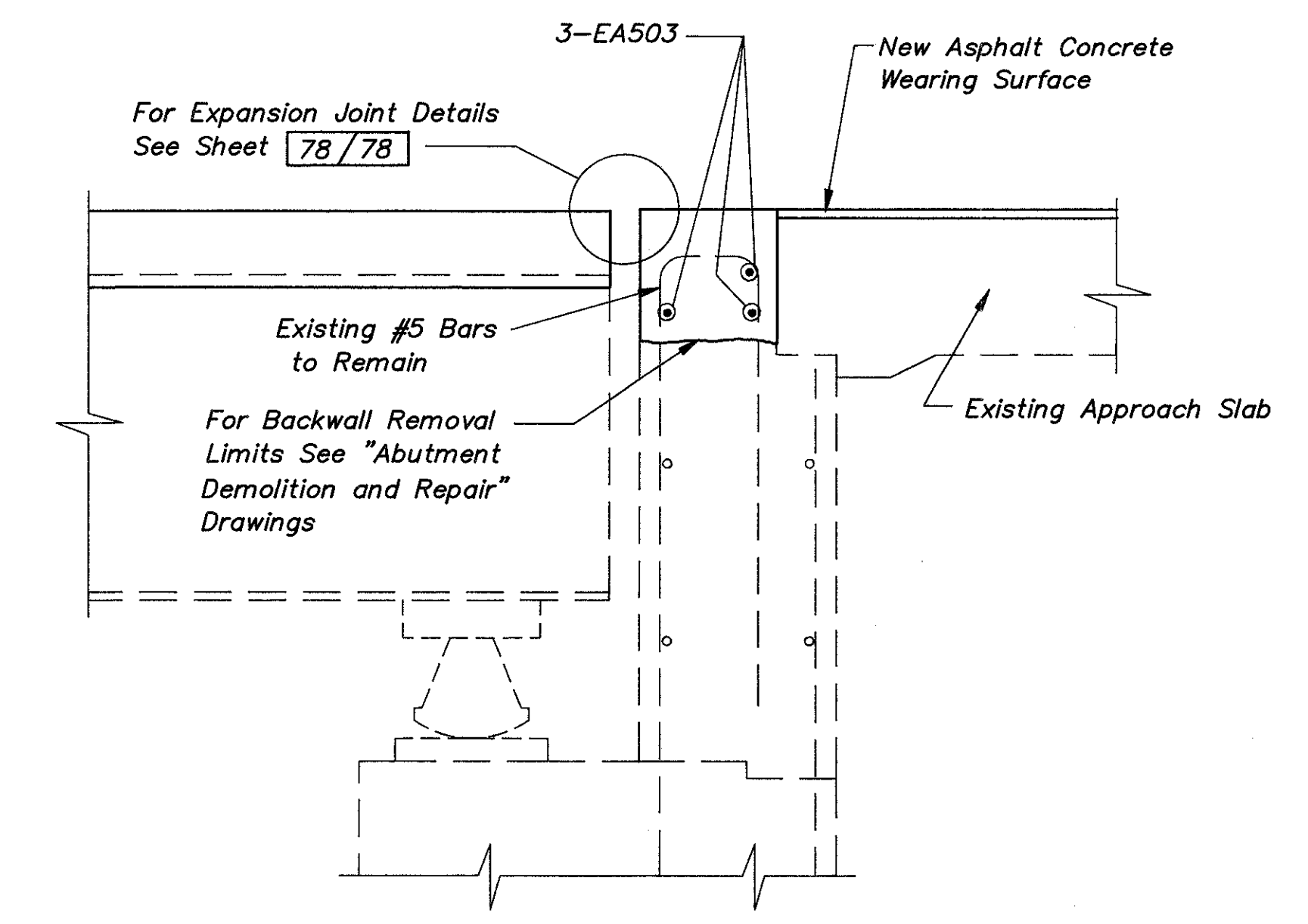
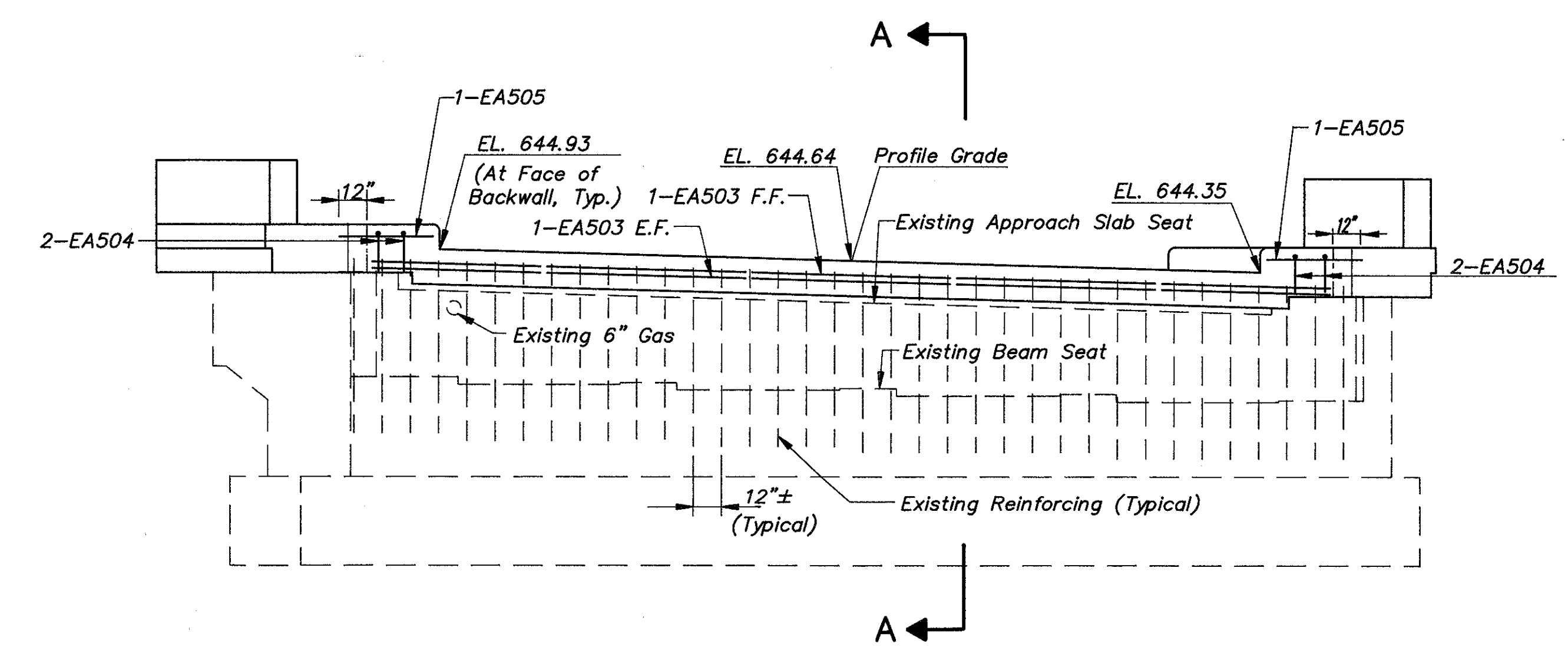


PLAN  
ABUTMENT BACKWALL CAPPING



SECTION A-A



ELEVATION  
ABUTMENT BACKWALL CAPPING

Notation: E.F.—Each Face, F.F.—Far Face

<b>CT</b> COLPETZER-THOMAS, INC. AN ENGINEERING GROUP		WILLOUGHBY • MENTOR • NORTH CANTON • STEUBENVILLE • LORAIN		64/78	
<b>FORWARD ABUTMENT</b>					
<b>BRIDGE NO. LAK-2-1029</b>					
<b>S.R. 2 UNDER MUNSON ROAD</b>					
LAKE COUNTY					
DESIGNED	DRAWN	TRACED	CHECKED	REVIEWED DATE	REVISED
J.P.R.	M.T.W.	M.T.W.	R.J.C.	J.E.A. 11/15/88	