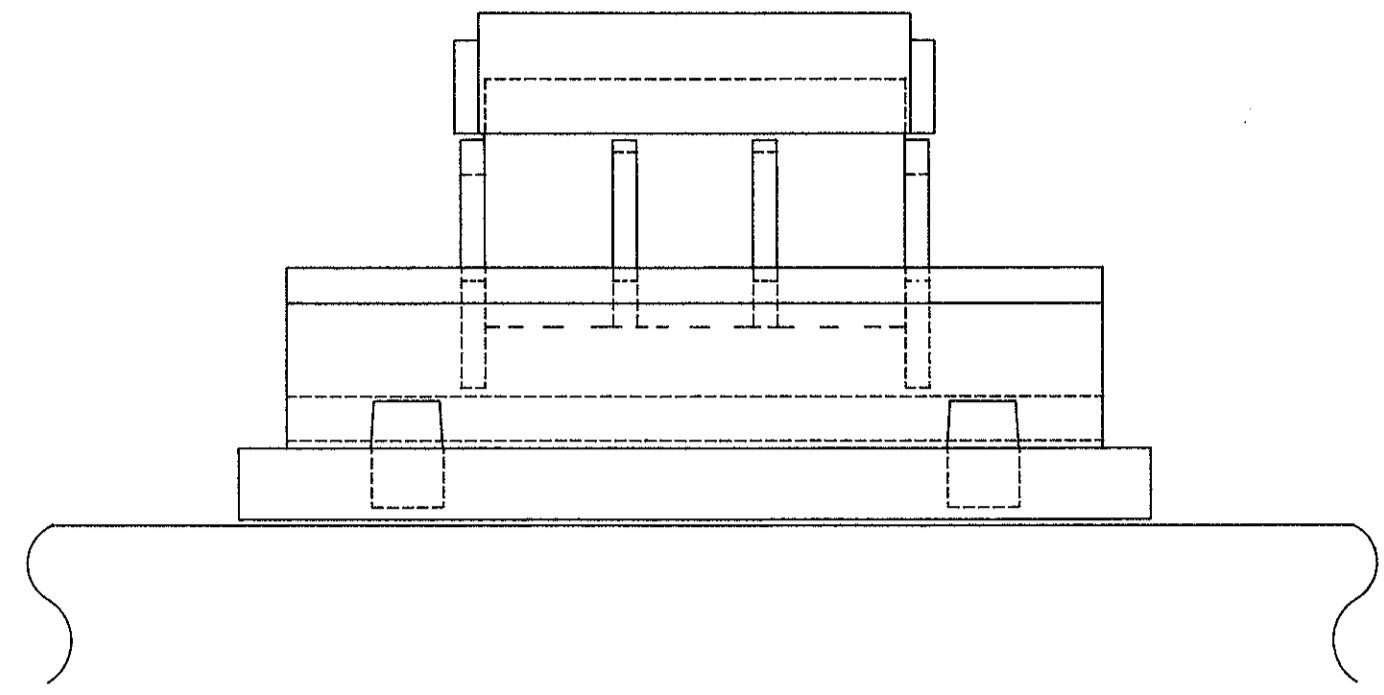
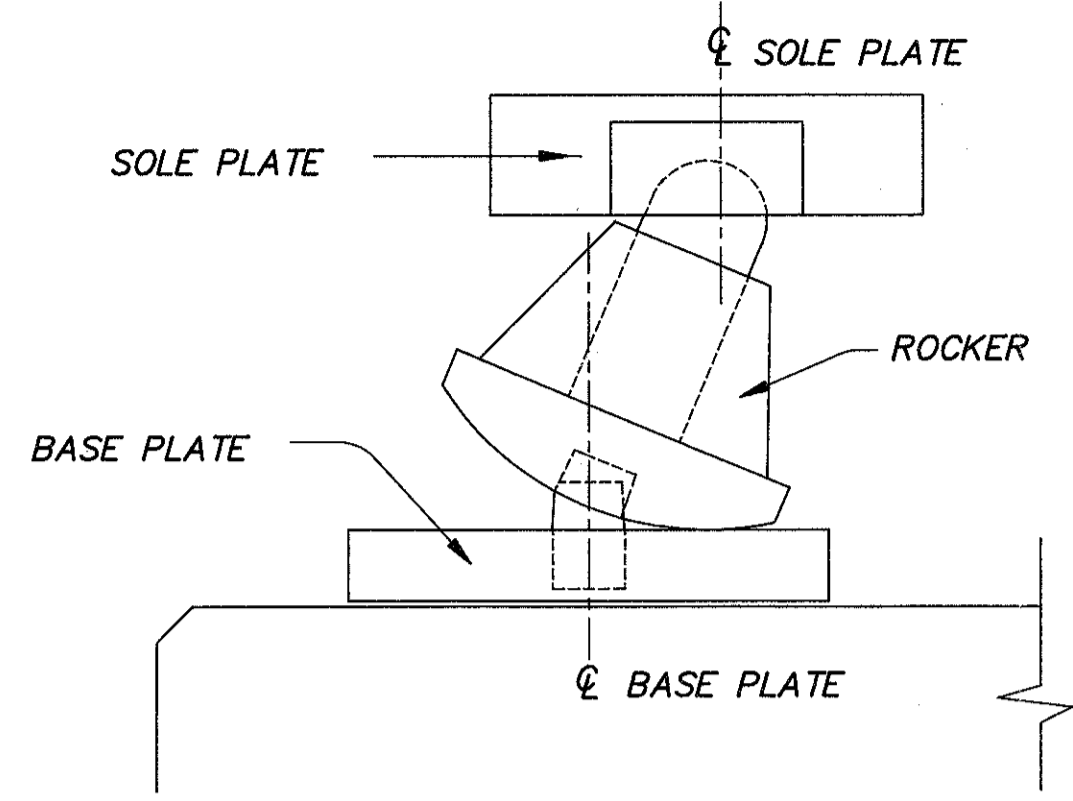


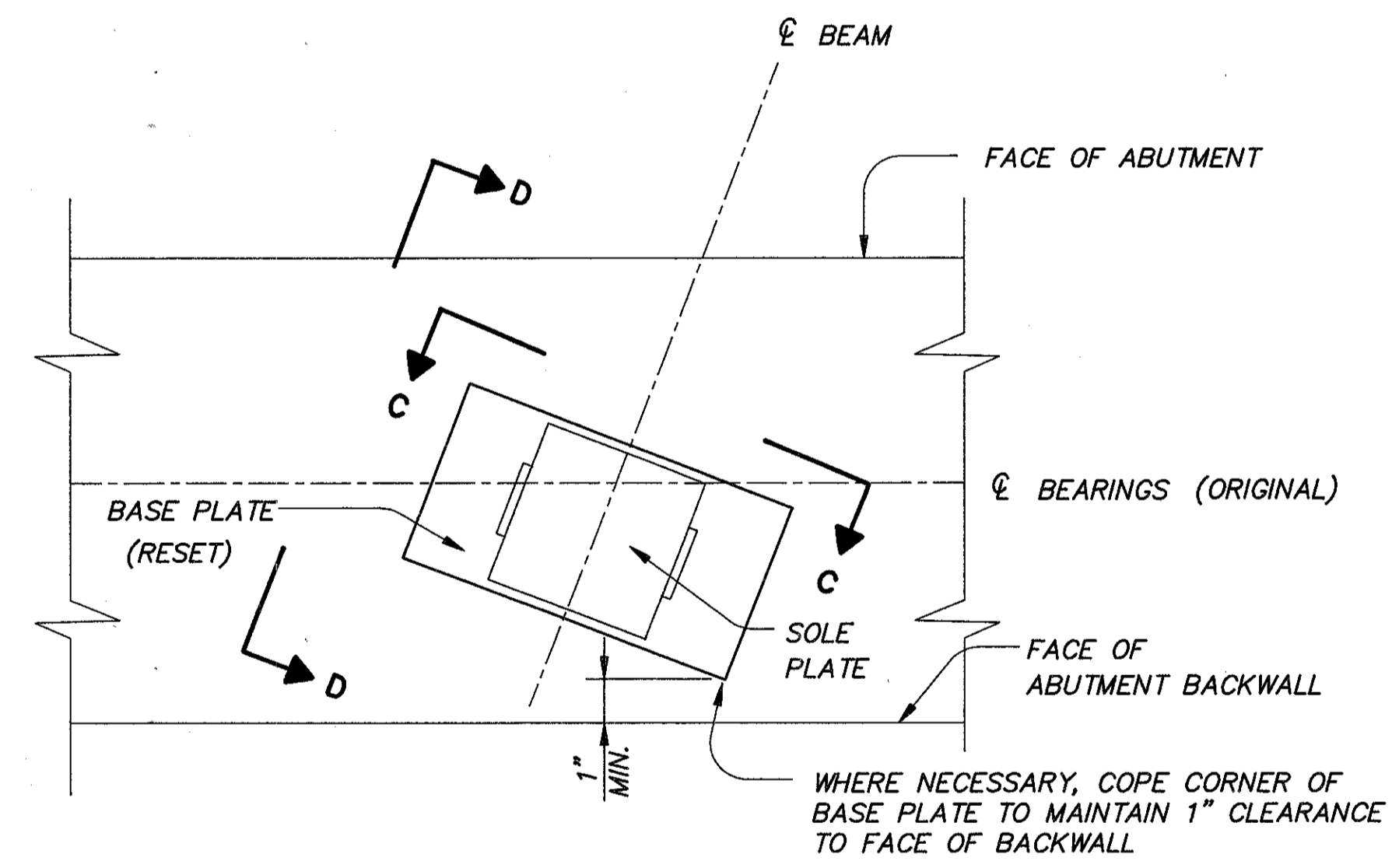
EXISTING PLAN VIEW



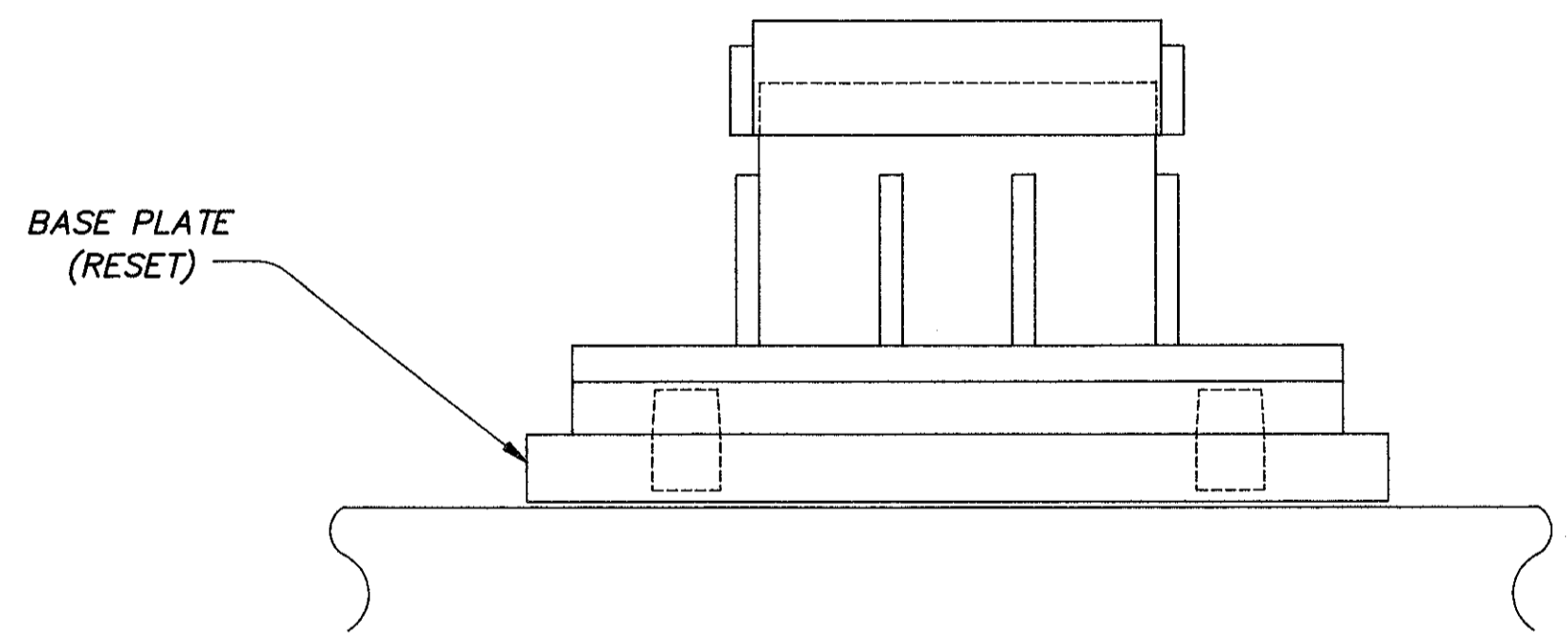
ELEVATION A-A



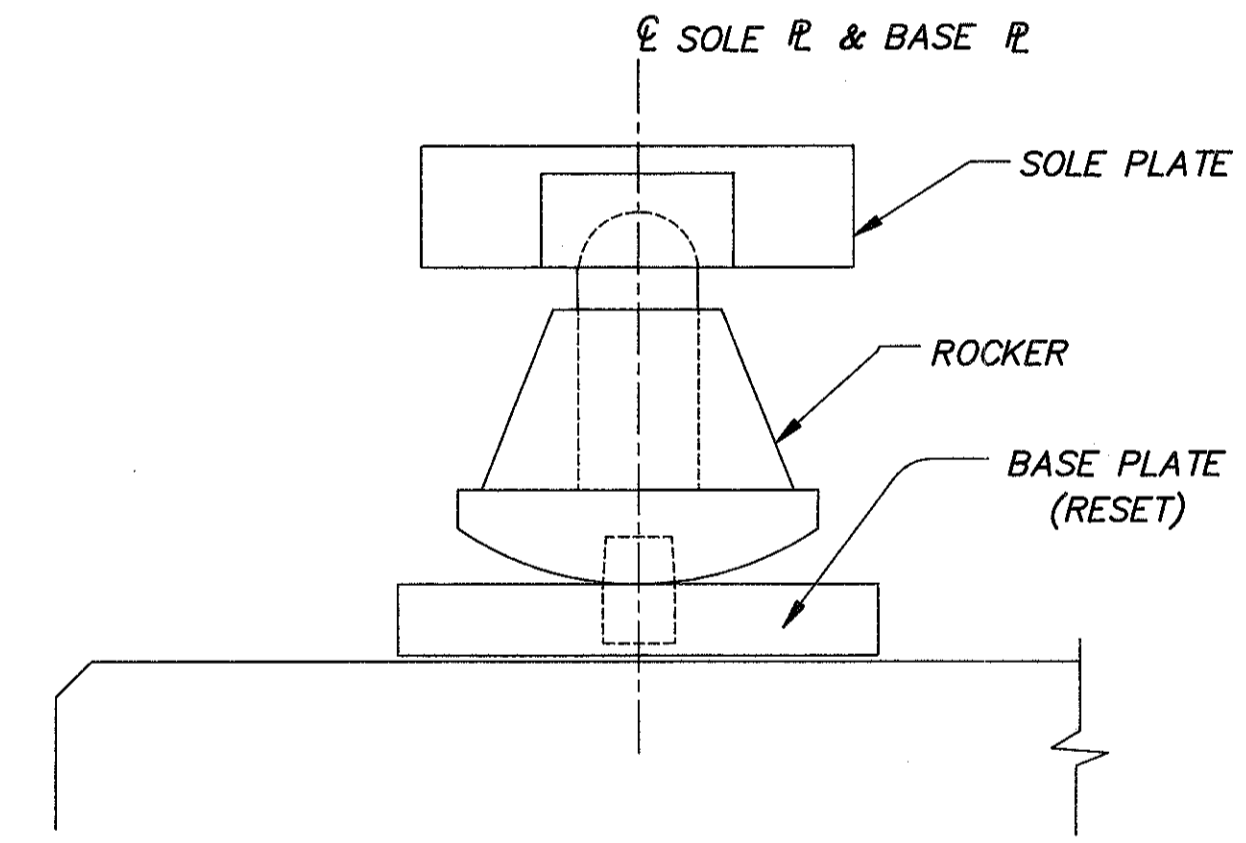
ELEVATION B-B



MODIFIED PLAN VIEW



ELEVATION C-C



ELEVATION D-D

- NOTES:
- ALL BEARINGS AT BOTH FORWARD AND REAR ABUTMENTS FOR LAK-2-0542 SHALL BE RESET.
  - PROCEDURE FOR RESETTING BEARINGS
    - RAISE THE ENTIRE SUPERSTRUCTURE AT THE ABUTMENT (MAX. LIFT TO BE 1/4") UNTIL THERE IS NO CONTACT BETWEEN THE SOLE PLATES AND THE ROCKERS.
    - RESET THE ROCKER AND BASE PLATE OR BASE PLATE ONLY IN FINAL POSITION, BY CENTERING THE BASE PLATE UNDER THE SOLE PLATE BOTH IN THE LONGITUDINAL AND TRANSVERSE DIRECTION.
    - LOWER ENTIRE SUPERSTRUCTURE AT THE ABUTMENT.

NOTATION: MAX. - MAXIMUM, MIN. - MINIMUM.

**CT COLPETZER-THOMAS, INC.**  
 AN ENGINEERING GROUP  
 WILLOUGHBY • MENTOR • NORTH CANTON • STEUBENVILLE • LORAIN 55/78

**RESET BEARINGS**  
 BRIDGE NO. LAK-2-0542  
 S.R.2 UNDER LOST NATION ROAD  
 LAKE COUNTY

DESIGNED	DRAWN	TRACED	CHECKED	REVIEWED	DATE	REVISED
J.E.A.	R.L.B.	R.L.B.	J.P.R.	R.J.C.	11/15/88	