

**SHEAR STUD SPACING DIAGRAM**  
 (Typical for All Beams)

A: 5 Spaces @ 12" = 5'-0"  
 B: 7 Spaces @ 15" = 8'-9"  
 C: 13 Spaces @ 17" = 18'-5"  
 D: 2 Spaces @ 16" = 2'-8"  
 E: 1 Space @ 14" = 1'-2"  
 F: 1 Space @ 9" = 0'-9"  
 G: 42 Spaces @ 15" = 52'-6"

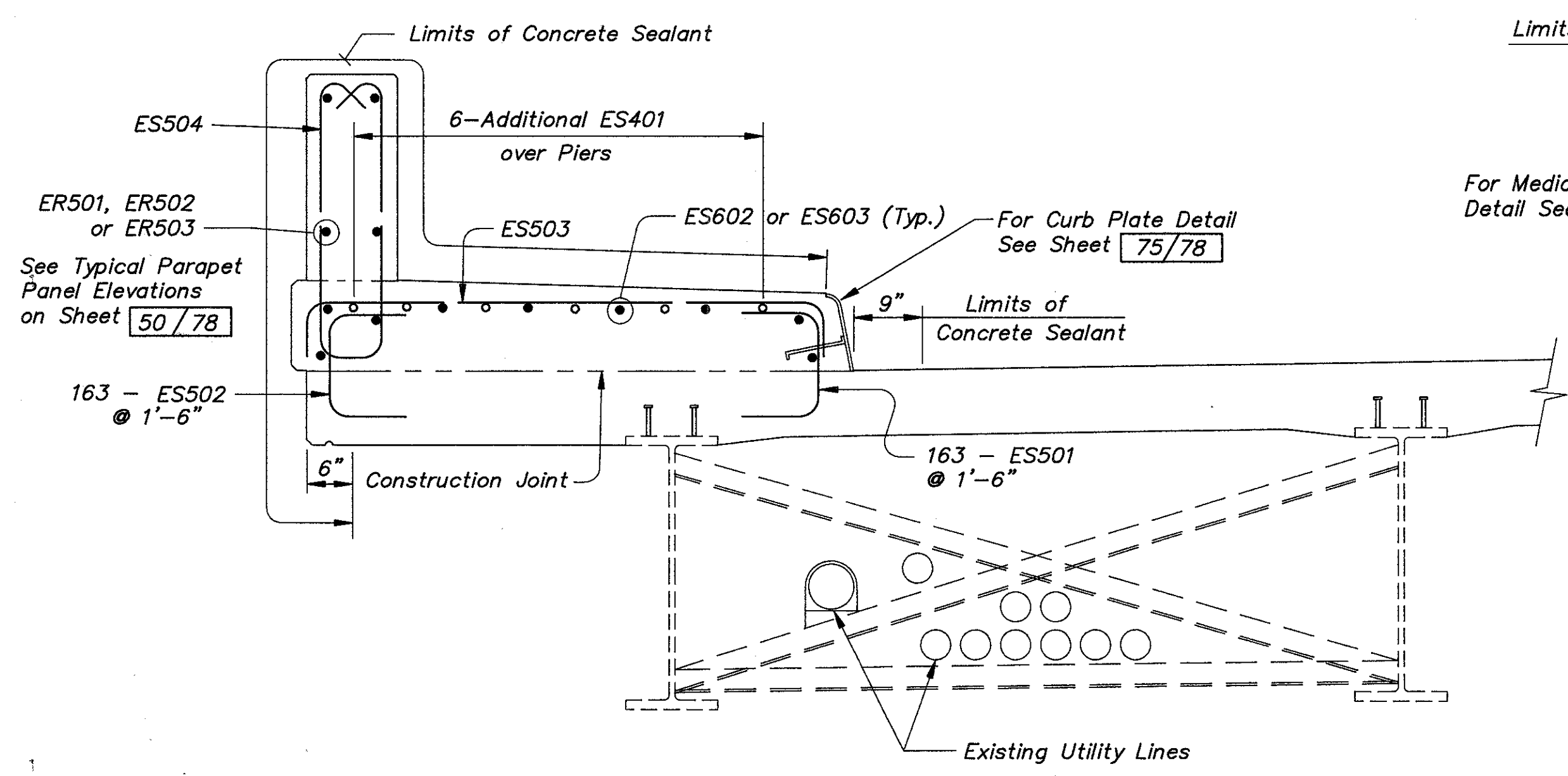
Welded attachment of supports for concrete deck finishing machine shall not be made for a distance of 11'-0" either side of the pier on the top flange.

Fillet welds to top flange shall be not closer than 1" from edge of flange, be not more than 2" long and be not smaller than the minimum size required by AASHTO.

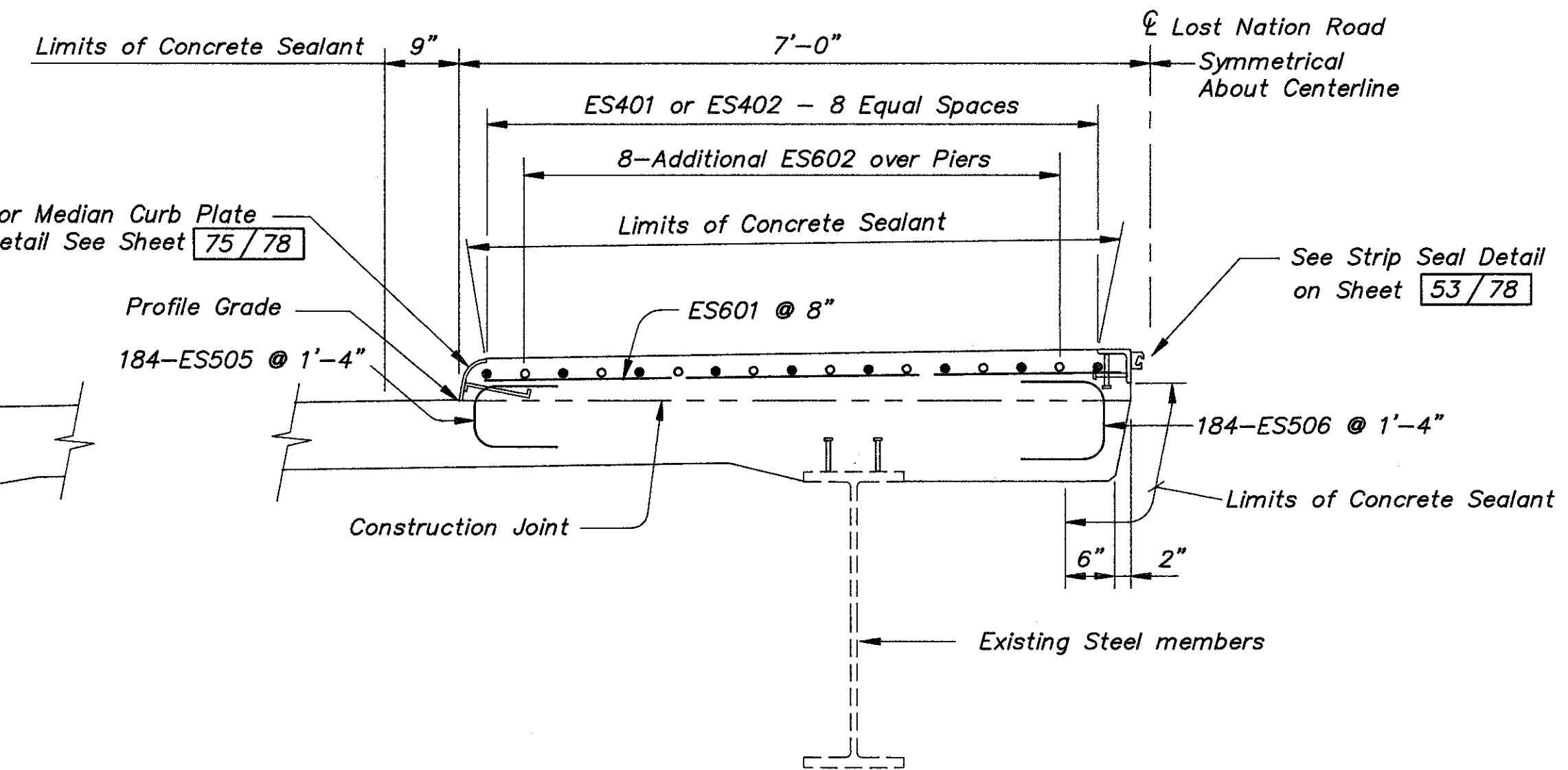
**HALF TRANSVERSE SECTION**

Southbound Lanes Shown  
 Northbound Lanes Opposite Hand  
 (All Crossframes not Shown)

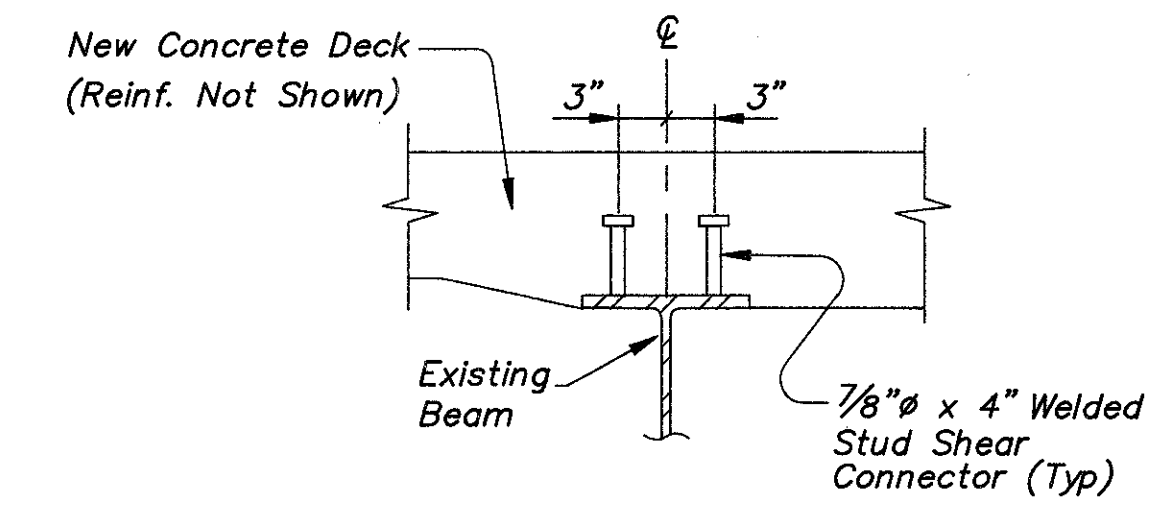
- NOTES:
1. A haunch width of 9" shall be used for computing quantity of concrete. However, the haunch width may vary between 6" and 12" (provided that the slope shall be not more than 1:4 for a haunch less than 9" in width)
  2. The nominal deck slab depth over beams is as indicated in Half Transverse Section. The actual slab depth may be more; it should not be less. After complete removal of the existing deck slab, the contractor shall determine actual top of beam elevations in the field and deduct them from proposed screed elevations to obtain actual slab depths. For depths less than those indicated, the proposed grade line and deck surface may have to be raised to provide the nominal depth, as directed by the Engineer. The quantity of deck concrete to be paid for shall be based on the nominal deck slab depth given above.
  3. Notation: Clr.-Clear, Bot.-Bottom, Typ.-Typical



**CURB AND PARAPET DETAIL**



**MEDIAN DETAIL**



**SECTION A-A**  
 (Typical for All Beams)

**COLPETZER-THOMAS, INC.**  
 AN ENGINEERING GROUP  
 WILLOUGHBY • MENTOR • NORTH CANTON • STEUBENVILLE • LORAIN 48/78

**SUPERSTRUCTURE**  
 BRIDGE NO. LAK-2-0542  
 S.R.2 UNDER LOST NATION ROAD  
 LAKE COUNTY

DESIGNED	DRAWN	TRACED	CHECKED	REVIEWED	DATE	REVISED
J.P.R.	R.L.B.	R.L.B.	R.J.C.	J.E.A.	11/15/88	