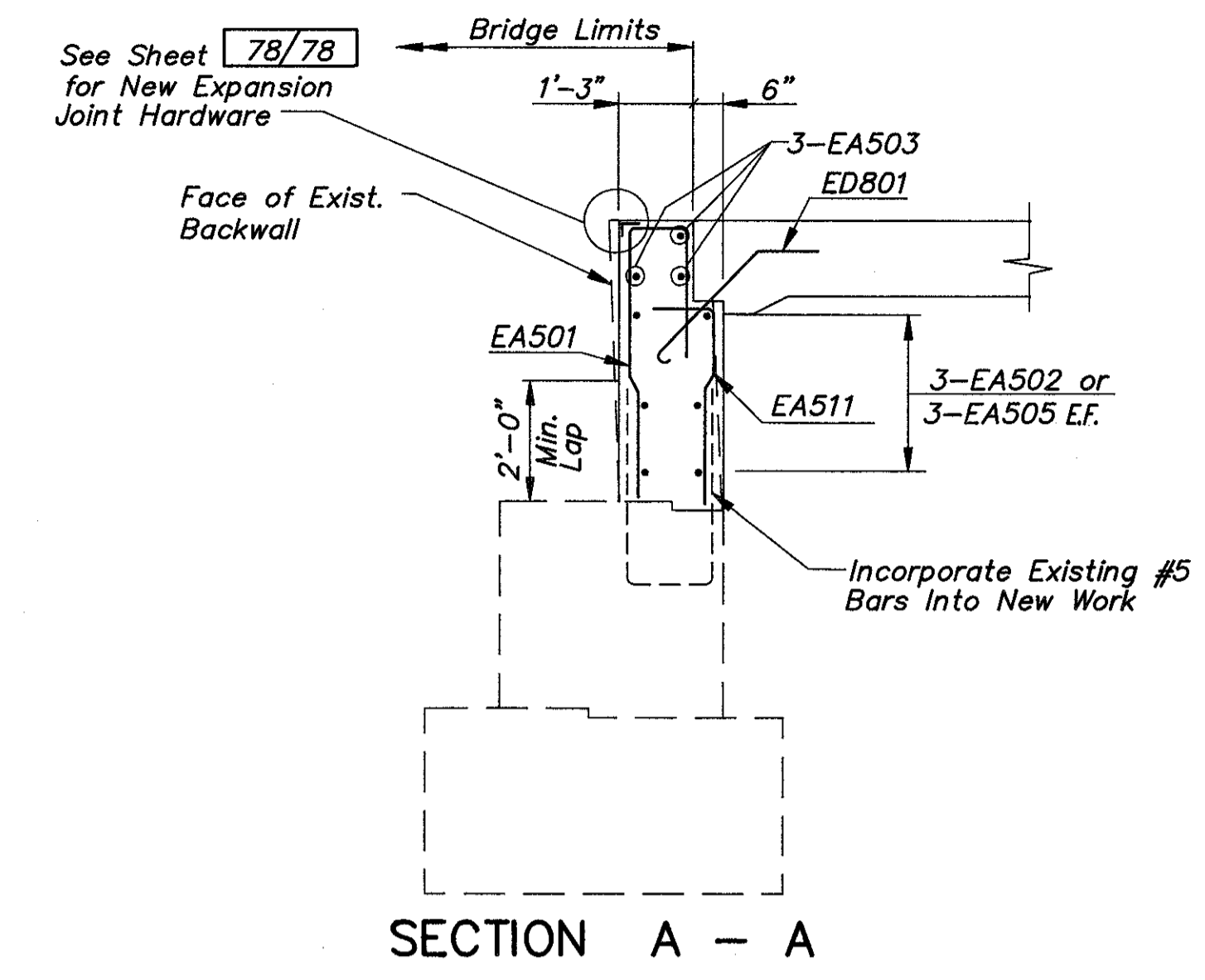
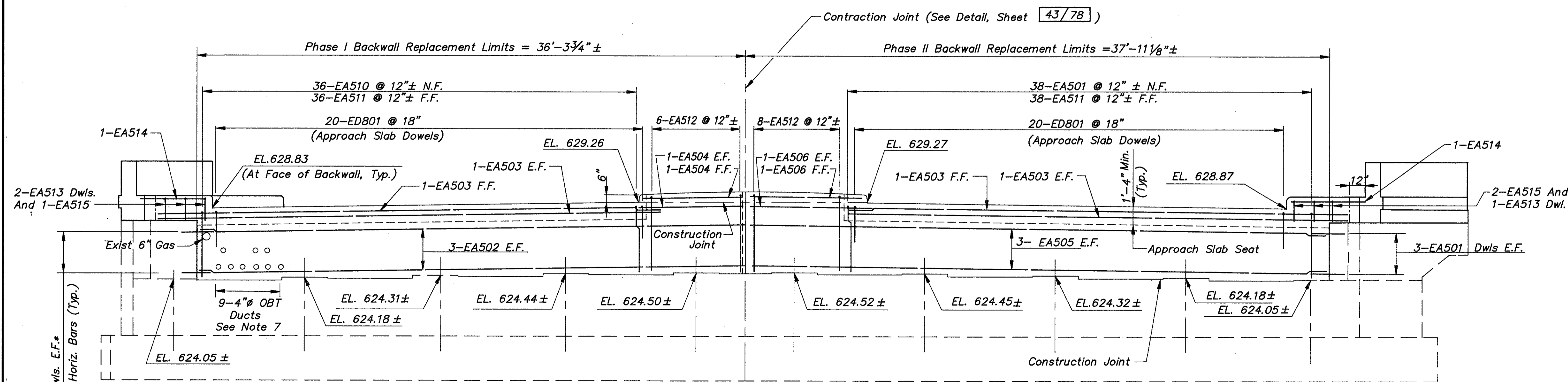


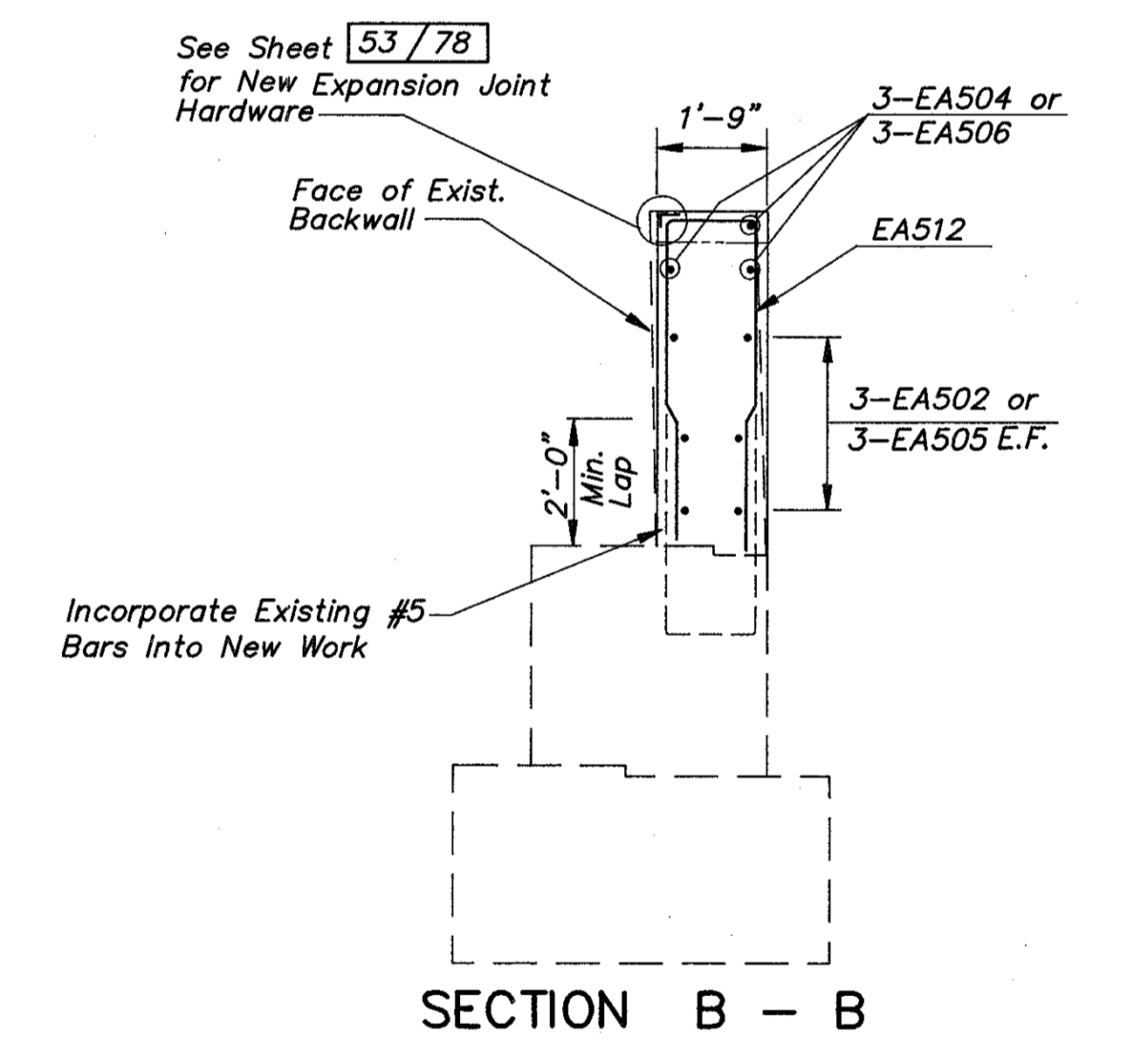
**PLAN**



**SECTION A - A**



**ELEVATION**



**SECTION B - B**

Notation: E.F.—Each Face, N.F.—Near Face, F.F.—Far Face, Exist.—Existing, Dwl.—Dowel, Typ.—Typical

\* - Drill Dowels 4" Clear of Surfaces, 12" Depth

**NOTES:**

- Elevations at Bridge Seat are from Field Survey. Contractor Shall Verify All Elevations and Dimensions Where Applicable to Backwall Reconstruction.
- See Sheet 40/78 for Limits of Phase Construction.
- For Backwall Excavation Limits See Sheet 75/78.
- Provide Dowel Holes for EA501 Bars Per Item 510.
- Field Adjust Re-steel as Required to Accomodate Existing 6" Gas Line and 9 - O.B.T. Duct Formation at Forward Abutment Backwall Reconstruction.
- Contractor Shall Field Verify the Location of all Existing Piping and O.B.T. Ductwork as Required to Accomodate Backwall Replacement.
- Contractor Shall Comply and Coordinate with Present Utility Company Standards Concerning Existing Piping and O.B.T. Ductwork Going Through New Backwall.
- For Approach Slab Replacement See Sheet 57/78.
- Median on Backwall Shall be Cast After Approach Slab is in Place.
- See Sheet 52/78 For Section C-C.

<b>COLPETZER-THOMAS, INC.</b> AN ENGINEERING GROUP WILLOUGHBY • MENTOR • NORTH CANTON • STEUBENVILLE • LORAIN					
<b>FORWARD ABUTMENT</b> <b>BRIDGE NO. LAK-2-0542</b> <b>S.R. 2 UNDER LOST NATION ROAD</b> LAKE COUNTY					
DESIGNED	DRAWN	TRACED	CHECKED	REVIEWED	DATE
J.P.R.	M.T.W.	M.T.W.	R.J.C.	J.E.A.	11/15/88