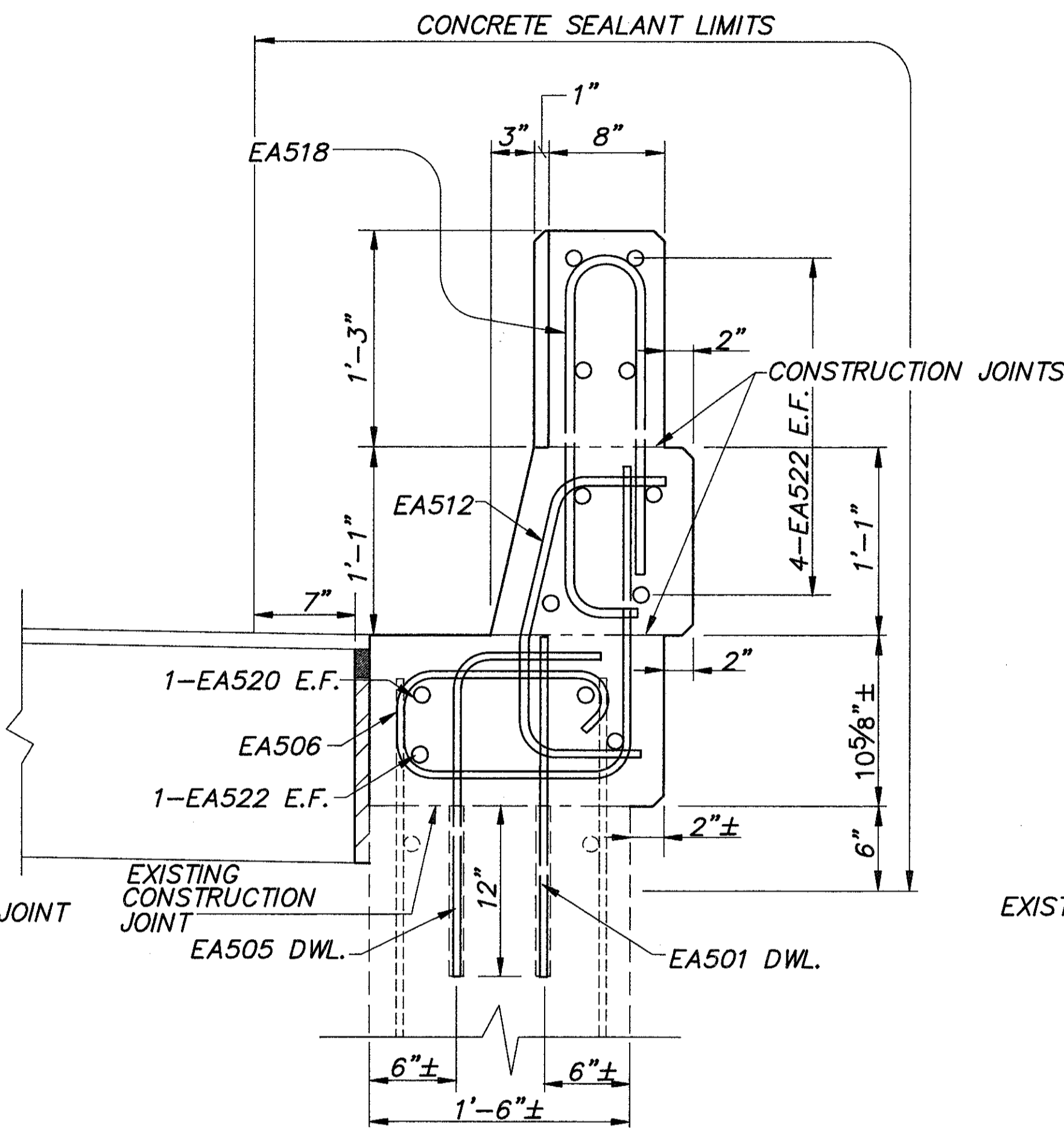
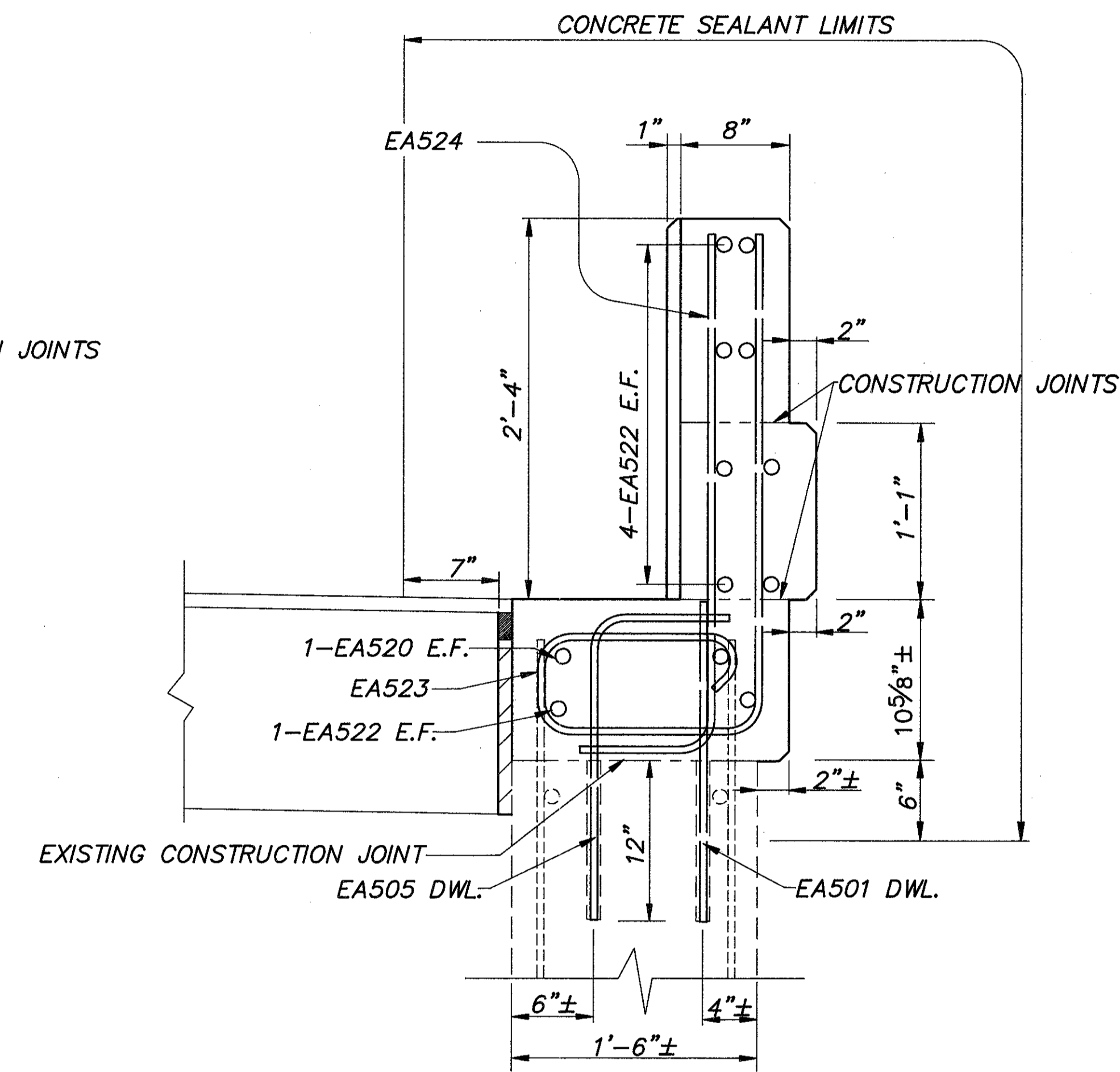


SECTION B-B
PROPOSED WINGWALL PARAPET
TRANSITION SECTION



SECTION C-C
PROPOSED WINGWALL PARAPET
END SECTION AT ABUTMENTS LR & RF



SECTION D-D
PROPOSED WINGWALL PARAPET
END SECTION AT ABUTMENTS RR & LF

Notation: E.F. - Each Face.
LR - Left Rear Abut.
LF - Left Forward Abut.
RR - Right Rear Abut.
RF - Right Forward Abut.

COLPETZER-THOMAS, INC. AN ENGINEERING GROUP <small>WILLOUGHBY • MENTOR • NORTH CANTON • STEUBENVILLE • LORAIN</small>						30/78
WINGWALL SECTIONS BRIDGE NO. LAK-2-0363 L & R OVER BEIDLER ROAD LAKE COUNTY						
DESIGNED	DRAWN	TRACED	CHECKED	REVIEWED	DATE	REVISED
J.P.R.	R.L.B. M.T.W.	R.L.B. M.T.W.	R.J.C.	J.E.A.	11/15/88	