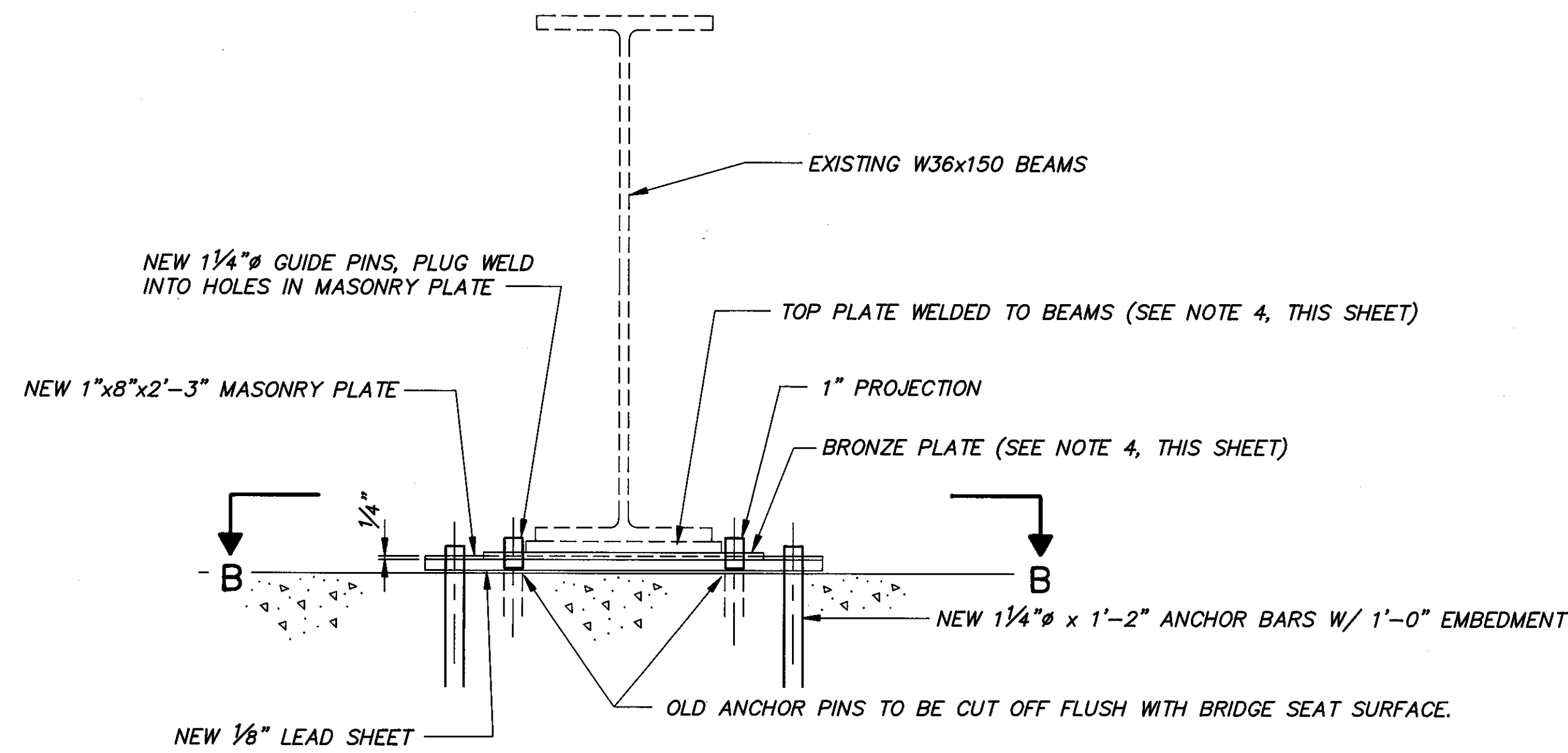
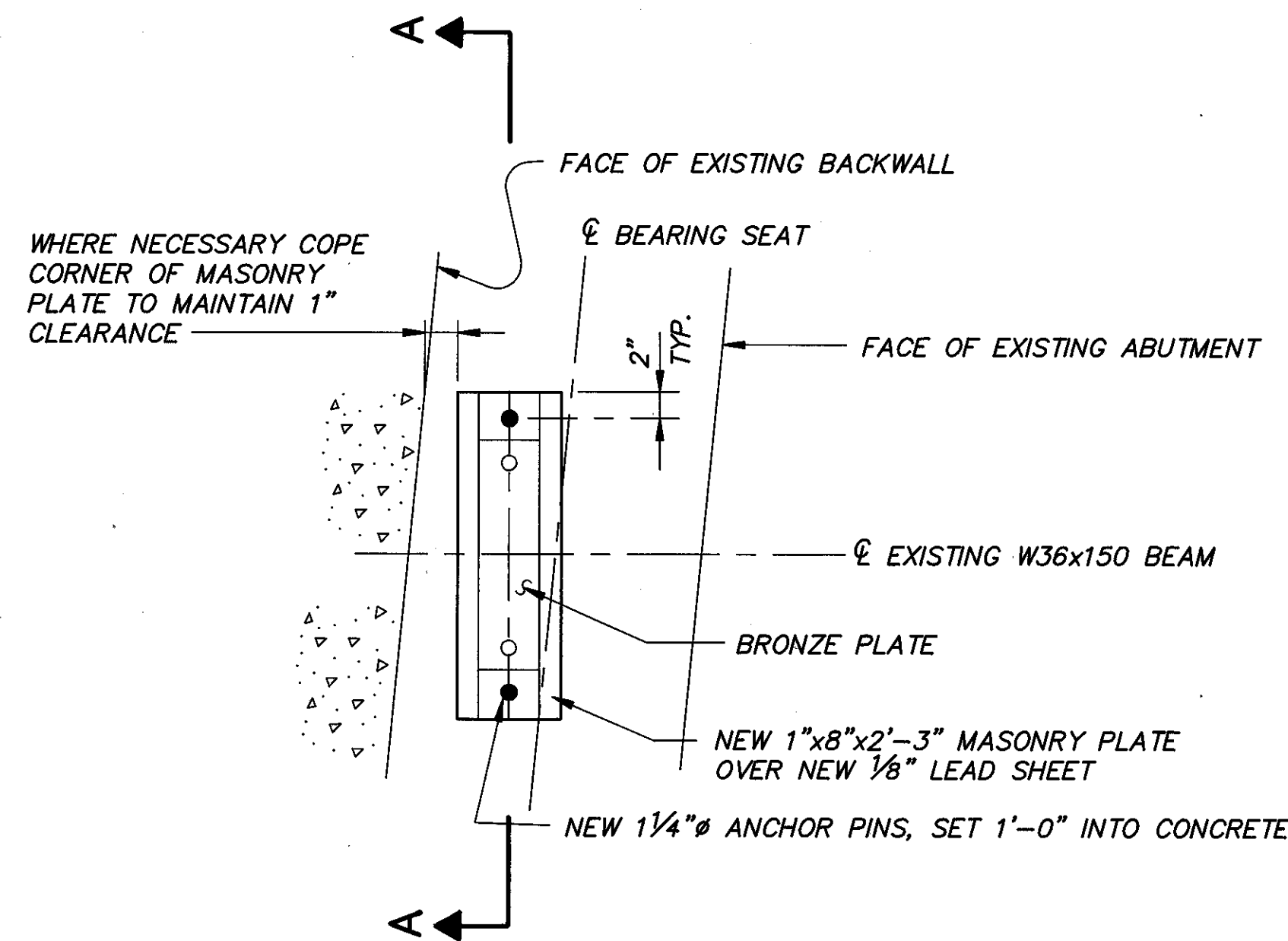


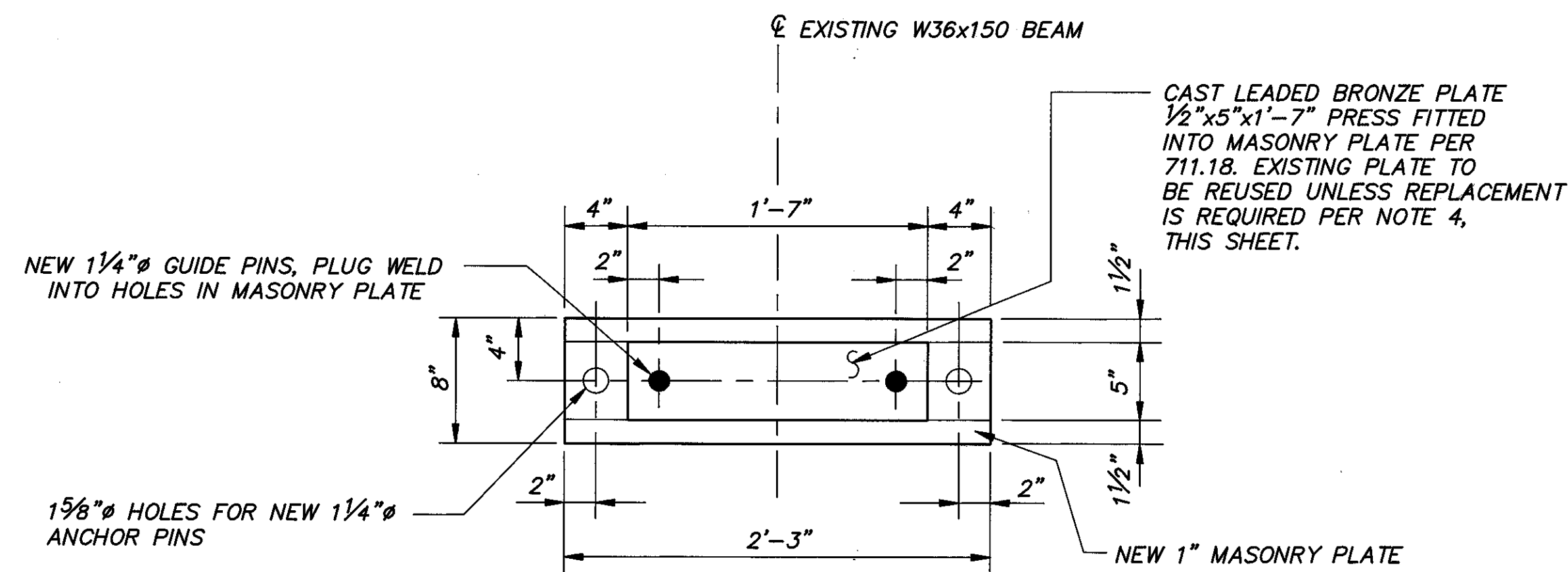
EXISTING PLAN VIEW



SECTION A-A



PROPOSED PLAN VIEW - NEW BEARING



VIEW B-B

PROCEDURE FOR RESETTING BEARINGS AT ABUTMENTS

- All bearings at both forward and rear abutments for Lak-2-0180 L & R shall be reset.
- Raise the entire superstructure at an abutment at one time, including the bottom masonry plate and bronze plate. Raise high enough to cut off the anchor bolt projections (maximum lift to be 1/4"). The contractor shall submit to the Engineer for approval his plan for jacking, bracing, shoring and resetting the bearings while portions of the bridge remain open to traffic. In addition, the contractor shall submit for Engineers approval a maintenance of traffic plan to be used during the jacking operation.
- Remove masonry and bronze plates. Masonry plates will be replaced with new 1"x8"x2'-3" plates as shown.
- Clean bronze plate and the top plate which is welded to beam flange for reuse. Any plates that appear to be deteriorated or pitted beyond reuse shall be replaced with new items of the same material as the existing at the direction of the Engineer. For estimating purposes, assume two top plates and two bronze plates per abutment will require replacing in addition to the replacement of all masonry plates. All new material required shall be included with Item 516 - Reset Bearings for payment. New steel shall be ASTM A36 and shall conform with 513.
- Remove existing anchor to below top of bridge seat.
- Plug weld new steel pins into new masonry plates as shown for beam guides.
- Reposition the new masonry plate and the bronze plate so they are centered below the top plate.
- Install plates and lower beams.
- New steel shall be painted per Item Special - Field Painting of New Structural Steel, System OZEU but shall be included in Item 516 - Reset Bearings for payment.

RESET BEARINGS BRIDGE NO. LAK-2-0180 L & R OVER RUSH ROAD LAKE COUNTY					
DESIGNED	DRAWN	TRACED	CHECKED	REVIEWED	DATE
R.J.C.	R.L.B.	R.L.B.	J.P.R.	J.E.A.	11/15/88