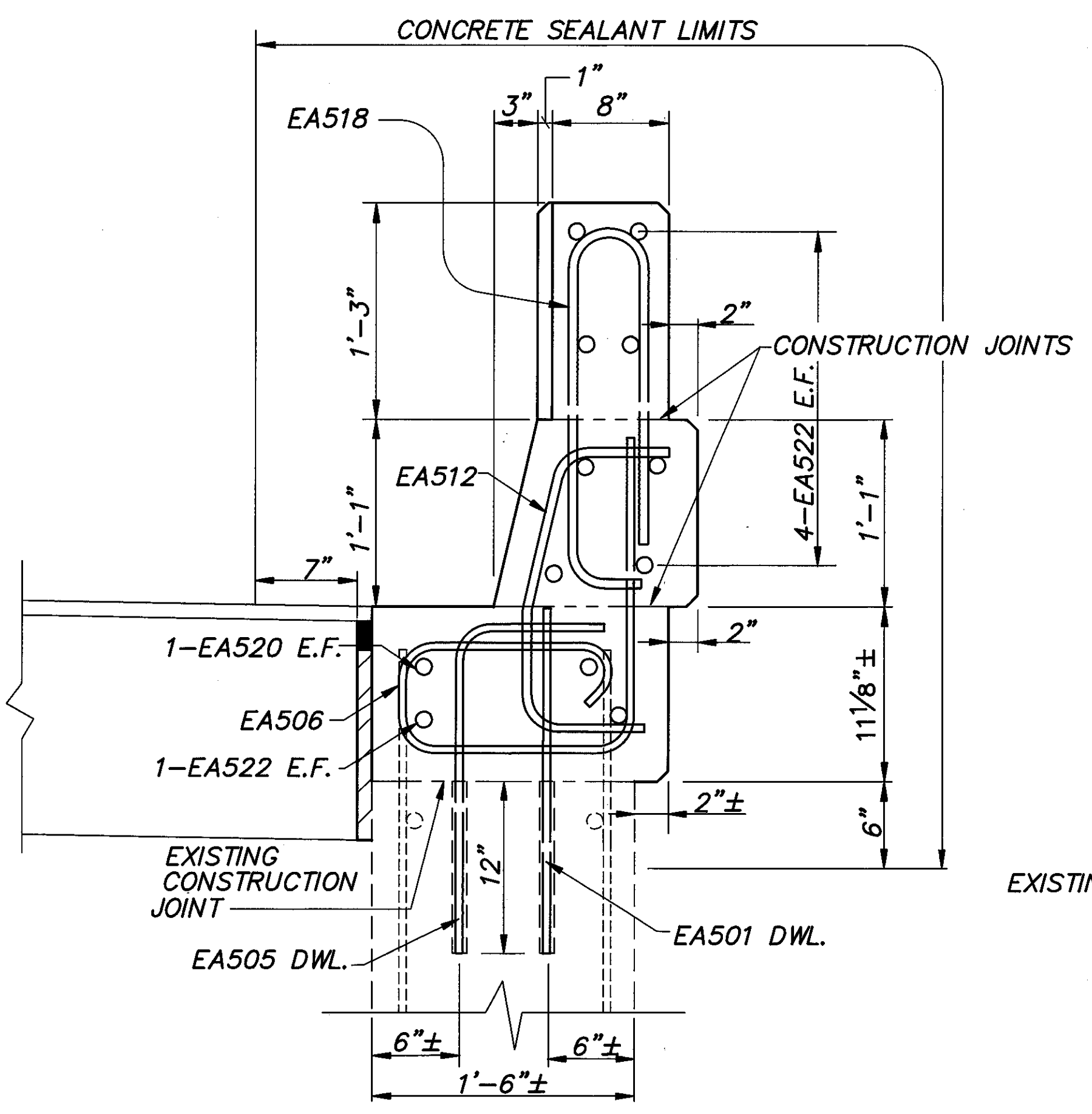
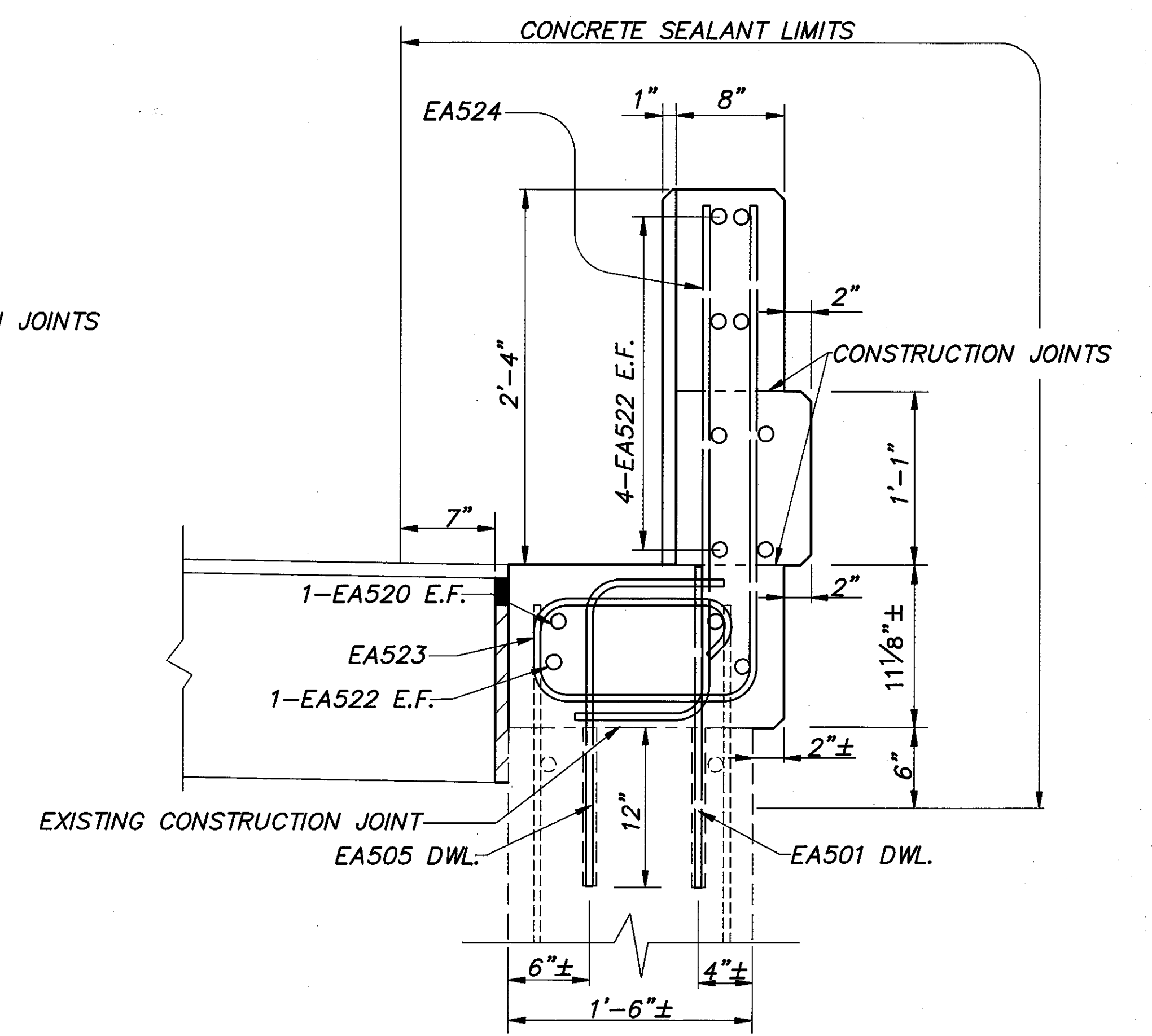


SECTION B-B
PROPOSED WINGWALL PARAPET
TRANSITION SECTION



SECTION C-C
PROPOSED WINGWALL PARAPET
END SECTION AT LR AND RF ABUTMENTS



SECTION D-D
PROPOSED WINGWALL PARAPET
END SECTION AT RR AND LF ABUTMENTS

Notation: E.F. - Each Face
 LR - Left Rear Abutment
 LF - Left Forward Abutment
 RR - Right Rear Abutment
 RF - Right Forward Abutment

COLPETZER-THOMAS, INC. AN ENGINEERING GROUP WILLOUGHBY • MENTOR • NORTH CANTON • STEUBENVILLE • LORAIN						13/78
WINGWALL SECTIONS						
BRIDGE NO. LAK-2-0180 L & R						
OVER RUSH ROAD						
LAKE COUNTY						
DESIGNED	DRAWN	TRACED	CHECKED	REVIEWED	DATE	REVISED
J.P.R.	R.L.B. M.T.W.	R.L.B. M.T.W.	R.J.C.	J.E.A.	11/15/88	