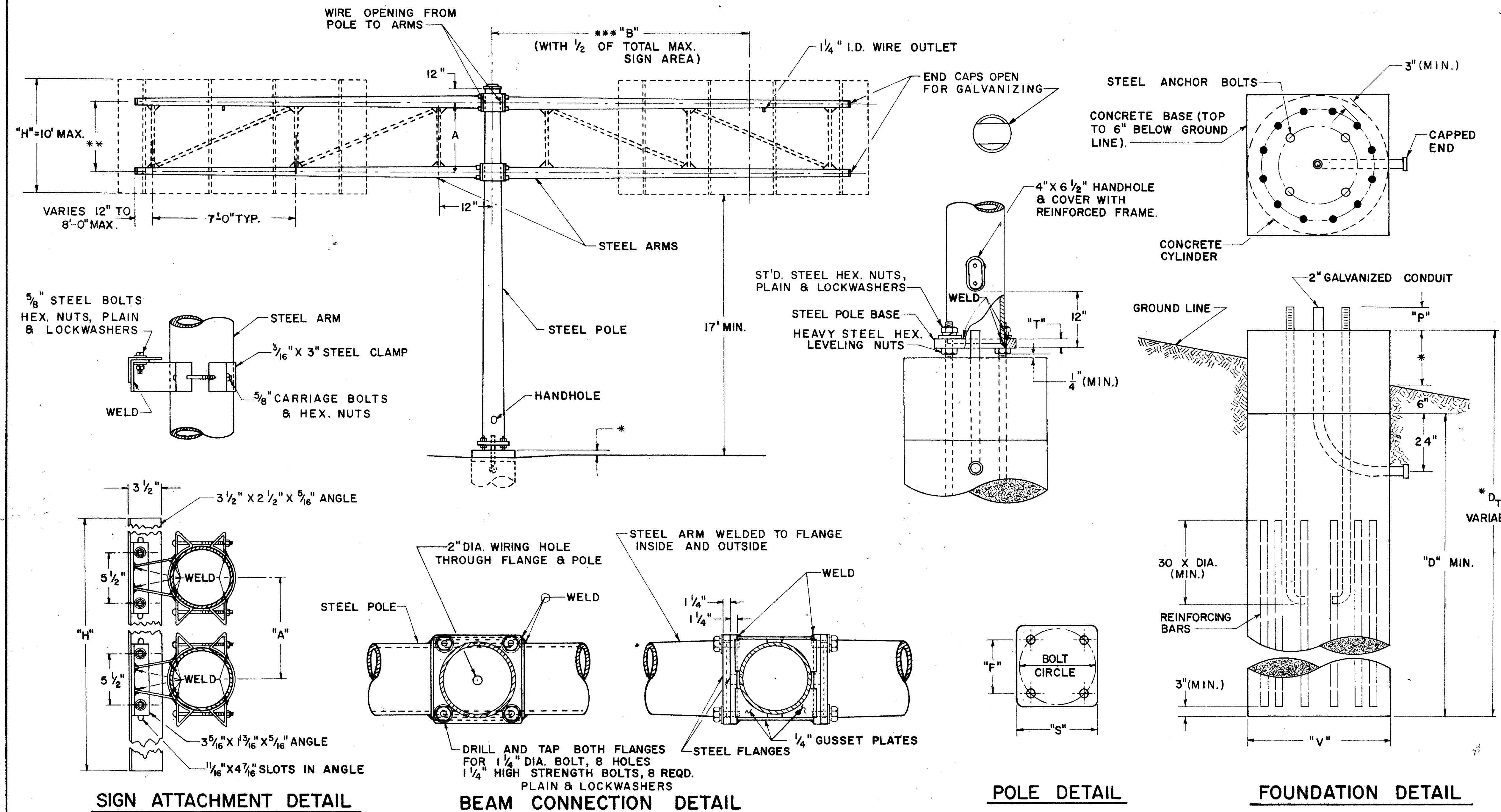


LAK-2-0.02



**NOTES**

**FABRICATION** - ALL PORTIONS OF THE SIGN SUPPORT INCLUDING SIGN ATTACHMENTS, SHALL BE HOT DIP GALVANIZED IN ACCORDANCE WITH THE REQUIREMENTS OF A.S.T.M. DESIGNATIONS A-123 AND A-153. THE CONDUIT SHALL BE GALVANIZED IN ACCORDANCE WITH SEC. 625.13 AND SHALL BE INCLUDED IN THE UNIT PRICE BID FOR OVERHEAD SIGN SUPPORTS FOR PAYMENT.

**\*FOUNDATION** - THE TOP ELEVATION OF ALL FOUNDATIONS SHALL BE BUILT UP 1'-0" ABOVE THE HIGHWAY CROWN.

**\*\*ERECTION** - ARMS 20' AND OVER IN LENGTH SHALL BE TRUSS TYPE USING 3" X 3" X 3/8" ANGLES WELDED TO GUSSET PLATES WITH THE INSIDE EDGES OF THE ARMS PARALLEL.

**\*\*\*VALUES OF "B"** MAY BE EXCEEDED PROVIDED THE PRODUCT OF ACTUAL SIGN AREA TIMES THE DISTANCE FROM C OF POLE TO C OF SIGN DOES NOT EXCEED THE PRODUCT OF "B" TIMES 1/2 THE MAX. SIGN AREA.

**GENERAL** - THE MAX. SIGN AREA ON EACH SIDE OF THE POLE EQUALS 1/2 THE MAX. TOTAL AREA IN THE CHART.

**MATERIAL** - STEEL POLE BASES, AND FLANGES SHALL CONFORM TO THE REQUIREMENTS OF ASTM SPECIFICATION A 30 GRADE B. HIGH STRENGTH STEEL BOLTS SHALL CONFORM TO ASTM SPECIFICATION A 193 GRADE B7. AFTER FABRICATION TAPERED POLES AND ARMS SHALL HAVE A MINIMUM YIELD STRENGTH OF 48,000 PSI.

**SOILS** - THE FOUNDATION DETAILS SHOWN ARE FOR AVERAGE SOIL CONDITIONS (MEDIUM CLAY, CEMENTED SAND AND GRAVEL, SANDY CLAY, OR STIFF CLAY). FOR POOR SOIL CONDITIONS, INCREASE "D" MIN. BY: 50% IN DRY OR WET SAND, 60% IN SILTY CLAY, 100% IN SOFT CLAY, AND FROM 75% TO 150% IN WET SILT, DEPENDING ON QUICKSAND ACTION.

**REINFORCING STEEL** - REINFORCING STEEL AS SHOWN IN TABLE SHALL BE INSTALLED WHEN "D" EXCEEDS THE ANCHOR BOLT LENGTH BY MORE THAN 3 FT. THE COST AND PLACEMENT OF REINFORCING STEEL SHALL BE INCLUDED IN THE UNIT PRICE FOR 816 CONCRETE FOR SIGN SUPPORT FOUNDATIONS.

**DESIGN**

THE DESIGN OF OVERHEAD SUPPORTS IS IN ACCORDANCE WITH A.A.S.H.O. SPECIFICATION FOR THE DESIGN AND CONSTRUCTION OF STRUCTURAL SUPPORTS FOR HIGHWAY SIGNS, ADOPTED JUNE 12, 1961.

DESIGN NO.	POLE SIZE	** ARM SIZE	DIM. A	DIM. ***B	DIM. "D" MIN.	DIM. F	DIM. P	DIM. S	DIM. T	BOLT CIRCLE	ANCHOR BOLT SIZE	DIM. V	MAX SIGN AREA	REINF. BARS SIZE	NO.
1	3ga. 18" X 14.64" X 24'-0"	7ga., 5.7" X 4.02" X 12'-0"	4'	8'	9'	18"	8 3/8"	26 1/2"	2"	25 1/2"	2" X 96"	3'-0"	160	3/4"	12
2	3ga. 18" X 14.64" X 24'-0"	7ga., 6.9" X 4.66" X 16'-0"	4'	12'	9'	18"	8 3/8"	26 1/2"	2"	25 1/2"	2" X 96"	3'-0"	160	3/4"	12
3	0ga., 18" X 14.64" X 24'-0"	7ga., 7.5" X 5.82" X 12'-0"	4'	8'	11'	18"	9 3/8"	26 1/2"	2 1/2"	25 1/2"	2 1/4" X 108"	3'-0"	240	1"	12
4	0ga., 18" X 14.64" X 24'-0"	7ga., 8.3" X 6.06" X 16'-0"	4'	12'	11'	18"	9 3/8"	26 1/2"	2 1/2"	25 1/2"	2 1/4" X 108"	3'-0"	240	1"	12
5	0ga., 18" X 14.64" X 24'-0"	7ga., 10" X 7.2" X 20'-0"	4'	16'	11'	18"	9 3/8"	26 1/2"	2 1/2"	25 1/2"	2 1/4" X 108"	3'-0"	220	1"	12
6	2 ply 3ga., 18" X 14.5" X 25'-0"	7ga., 10" X 7.48" X 18'-0"	6'	10'	14'	18"	11 1/4"	26 1/2"	3"	25 1/2"	3" X 144"	3'-0"	360	1 1/8"	12
7	2 ply 3ga., 18" X 14.5" X 25'-0"	7ga., 11" X 7.92" X 22'-0"	6'	14'	14'	18"	11 1/4"	26 1/2"	3"	25 1/2"	3" X 144"	3'-0"	360	1 1/8"	12
8	2 ply 0ga., 18" X 14.5" X 25'-0"	7ga., 12.5" X 9.14" X 24'-0"	6'	14'	17'	18"	11 1/4"	26 1/2"	3"	25 1/2"	3" X 168"	3'-0"	480	1 1/4"	12
9	2 ply 0ga., 18" X 14.5" X 25'-0"	3ga., 12.5" X 8.58" X 28'-0"	6'	18'	17'	18"	11 1/4"	26 1/2"	3"	25 1/2"	3" X 168"	3'-0"	480	1 1/4"	12

BUREAU OF TRAFFIC  
OHIO DEPARTMENT OF HIGHWAYS

**OVERHEAD SIGN SUPPORT**

816 No. 10.48

APPROVED *Robert E. Larson*  
ENGINEER OF TRAFFIC

DATE  
1-18-62  
3-30-62  
4-18-62  
5-19-62