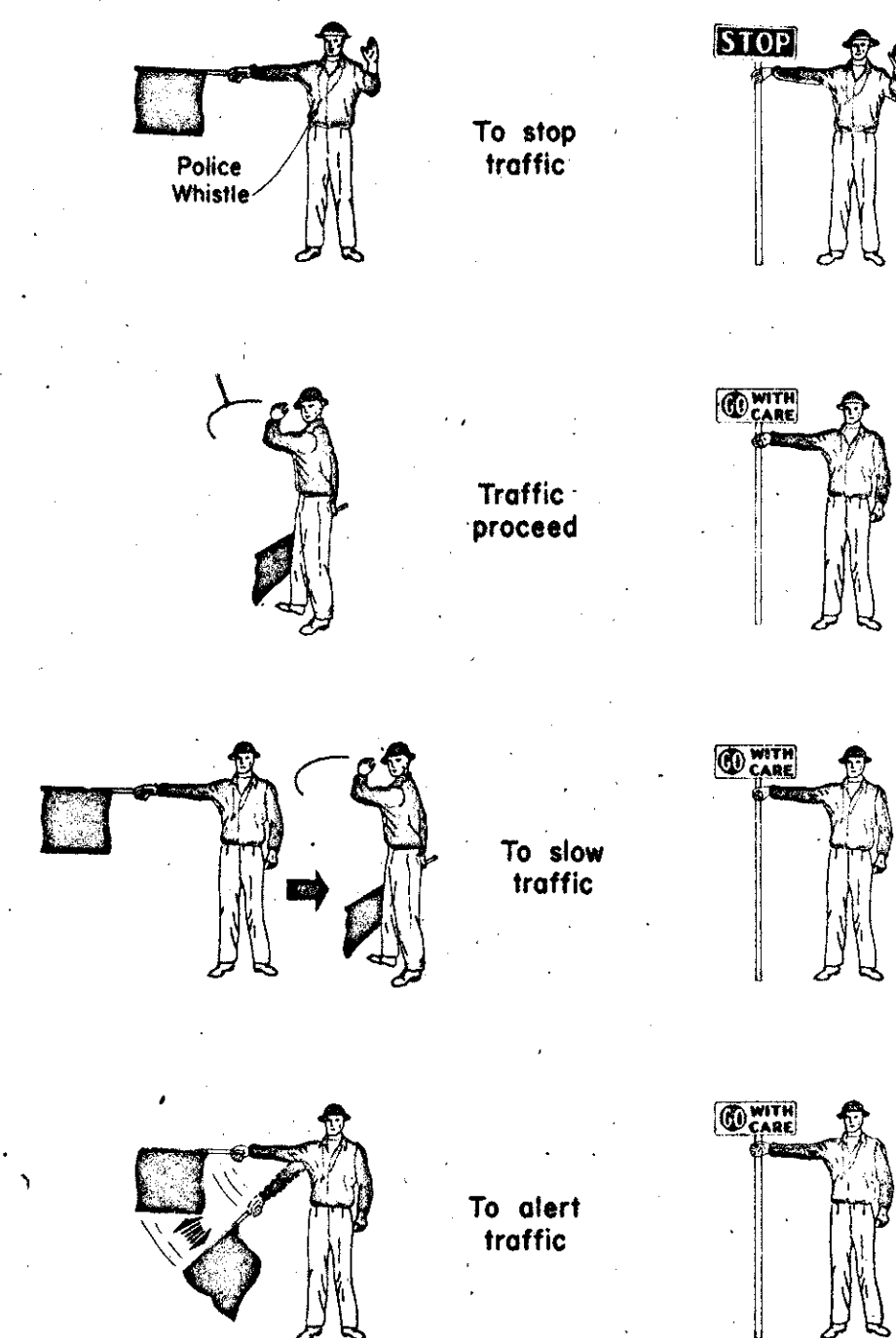
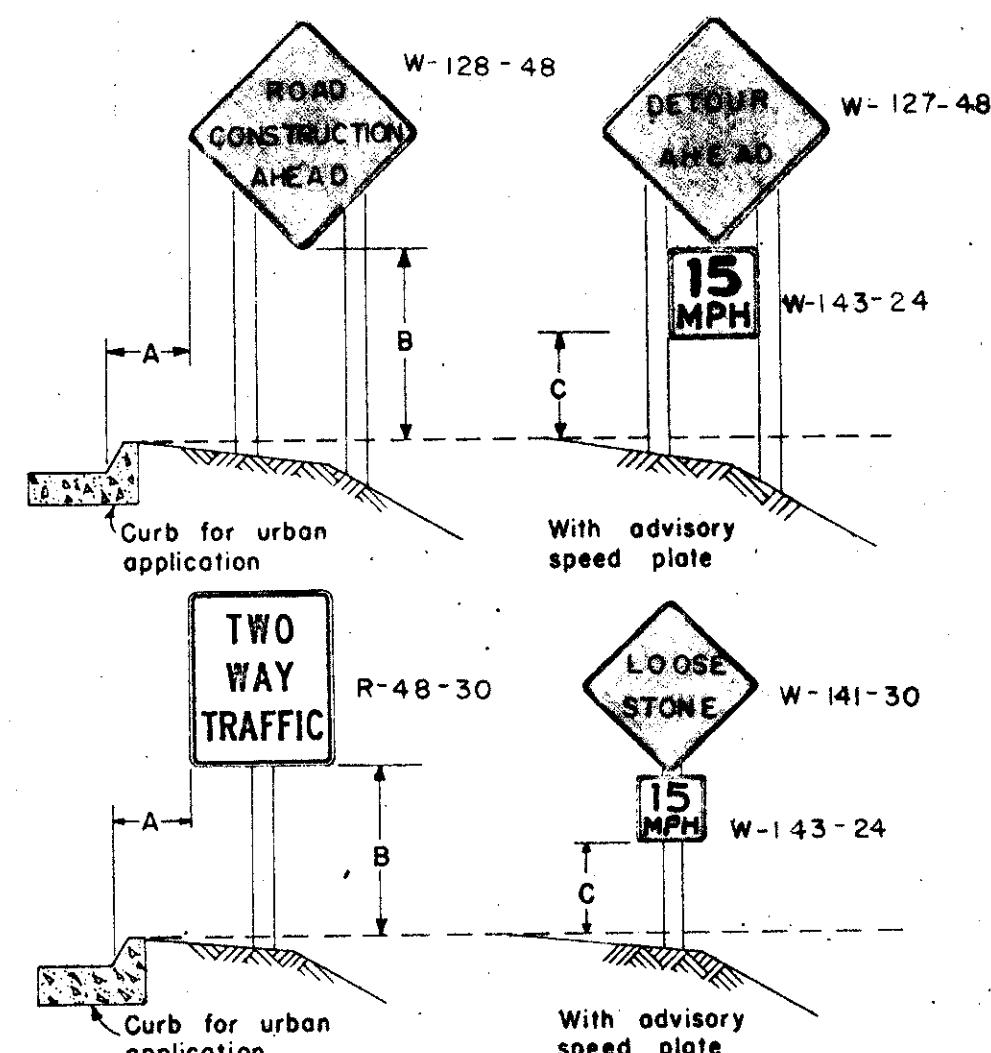


PROCEDURES FOR FLAGMAN



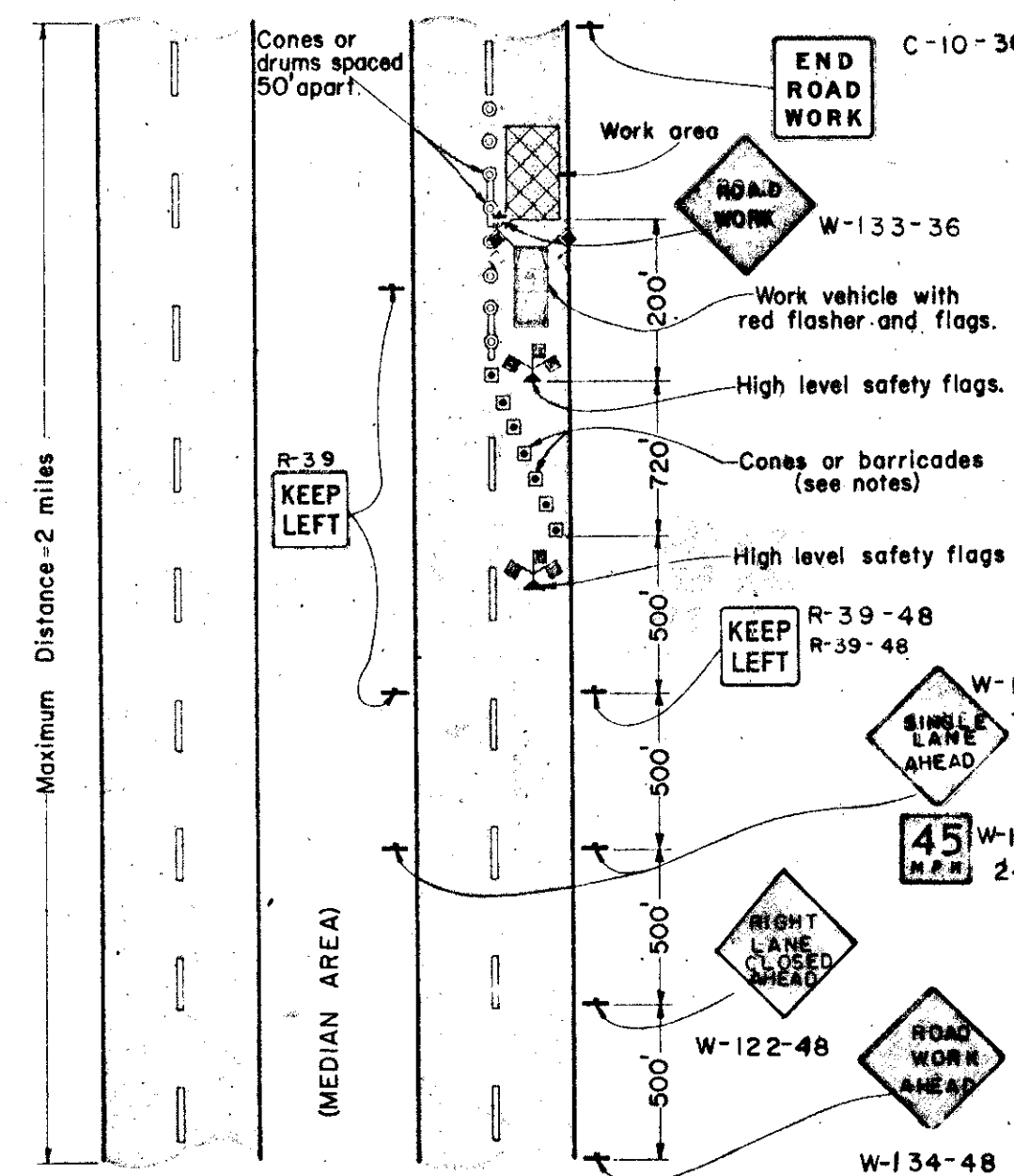
HEIGHT AND LATERAL LOCATION OF SIGNS

FOR TYPICAL RURAL AND URBAN INSTALLATIONS



Location	Urban	Rural
A	2'	6' to 12'
B	7'	5'
C	6'	4'

TYPICAL APPLICATIONS OF TRAFFIC CONTROL DEVICES FOR CLOSING ONE LANE ON A 4-LANE DIVIDED HIGHWAY

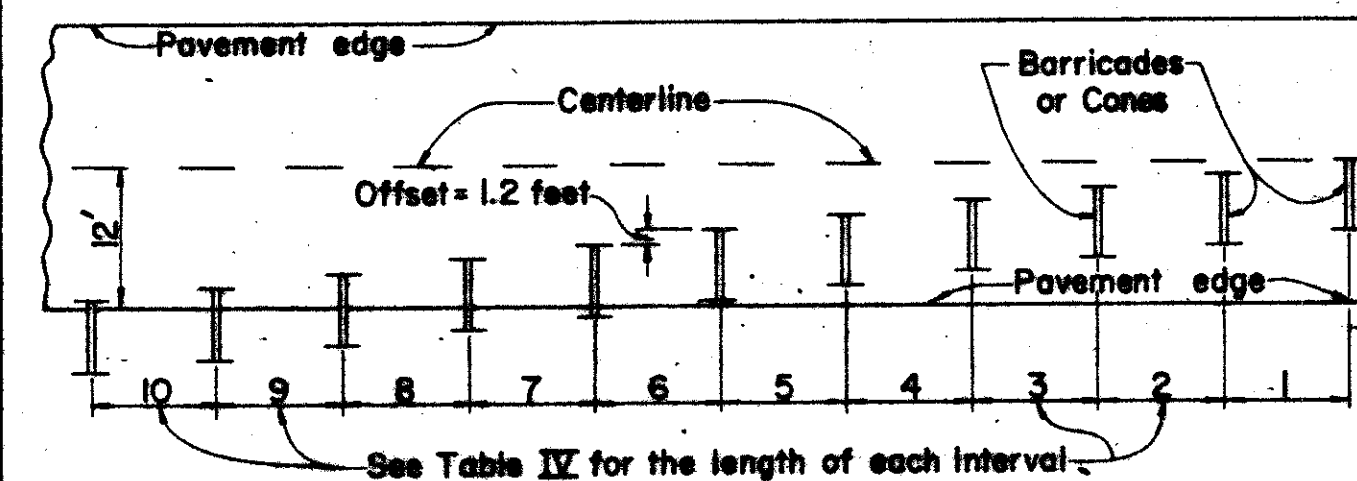


NOTES:
1. See Table III and Table IV for spacing and offset of cones on the taper.
2. Erect additional KEEP LEFT signs in the median at intervals of 1000 feet through the restricted area.

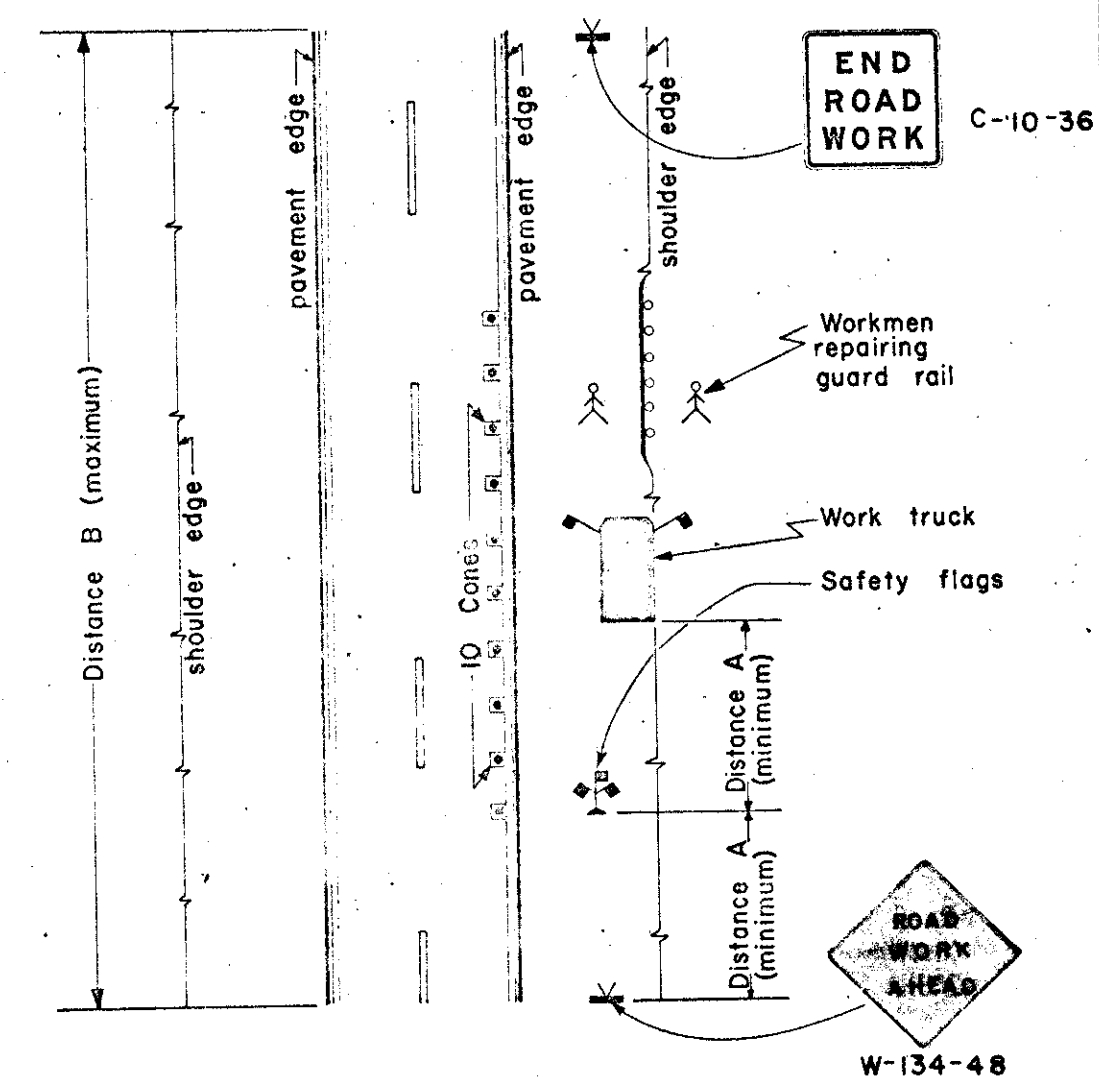
- SYMBOLS -

- Sign mounted on a post.
- Sign mounted on an easel.
- Sign on a portable barricade.
- Sign on a fixed barricade.
- Signs on a truck.
- Cone
- Drum
- Wet paint guard.
- Road edge delineator
- Safety flags
- Flagman
- Workman
- Guard rail
- Painted centerline.

PLACEMENT OF BARRICADES OR CONES



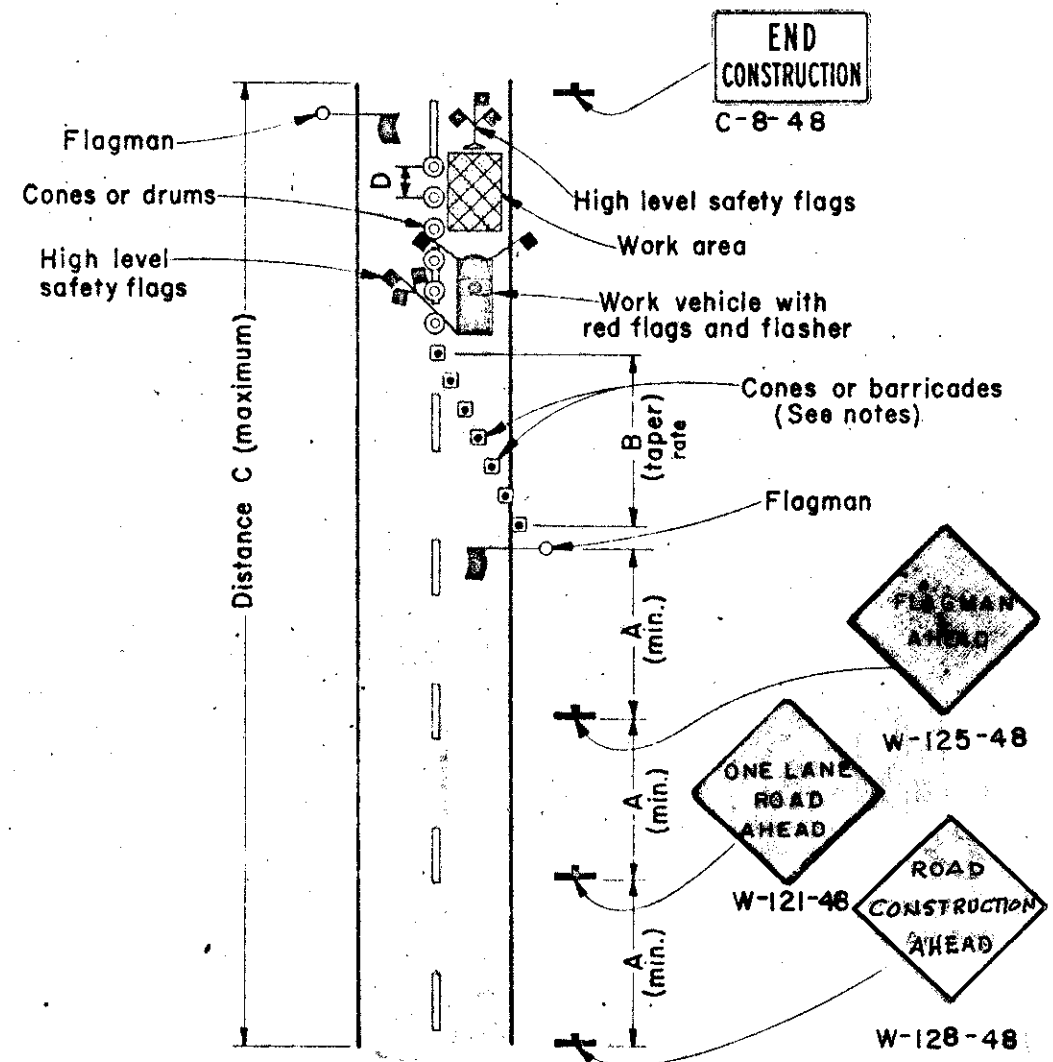
TYPICAL APPLICATIONS OF TRAFFIC CONTROL DEVICES FOR STATIONARY OPERATIONS ON THE SHOULDER



NOTES:
1. Space the 10 cones as shown in table IV.
2. For work within the median, install the same cones and signs for both directions of travel.

TYPE OF ROADWAY	DISTANCE	
	A-ft	B-mi
Urban	200	0.5
Rural-Minor	350	1.0
Rural-Major	500	1.0
Expressway	750	2.0

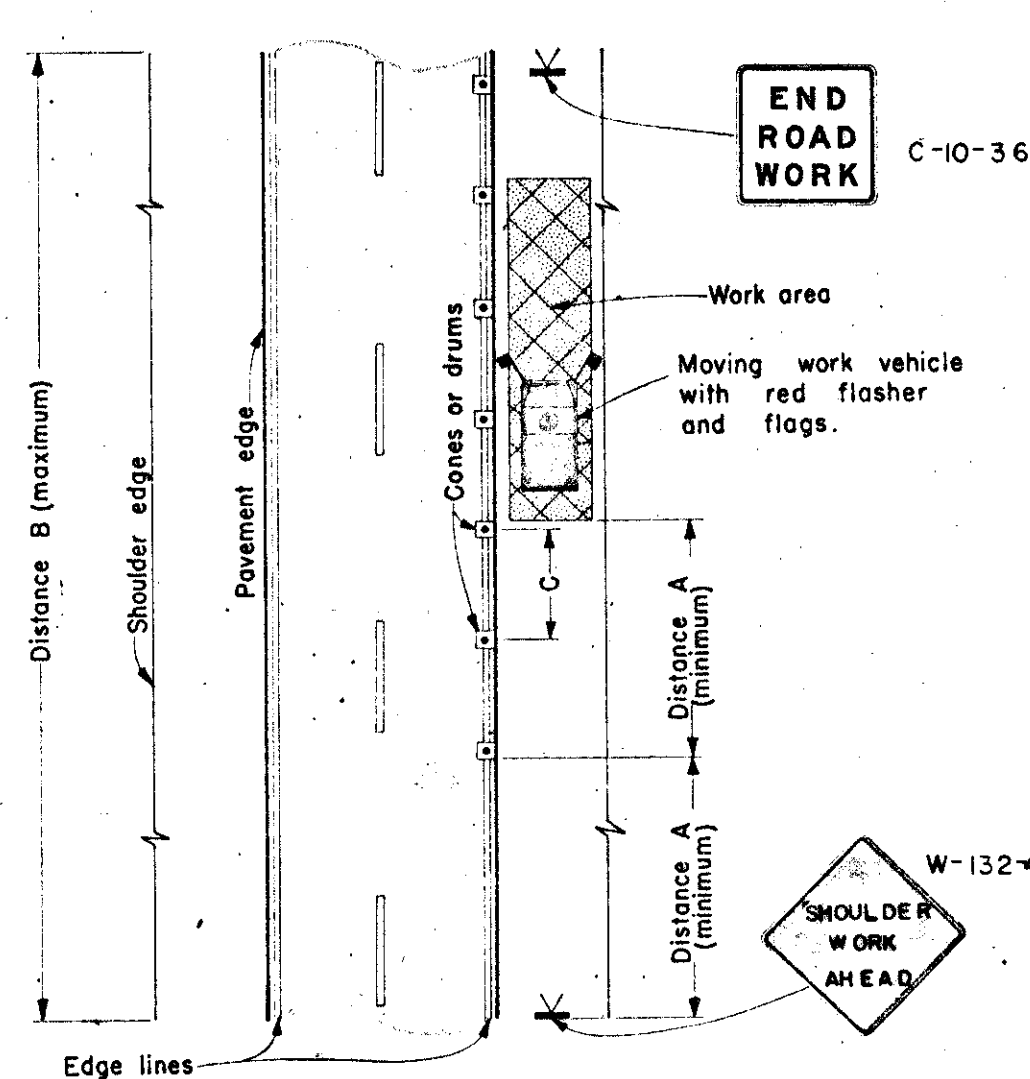
TYPICAL APPLICATIONS OF TRAFFIC CONTROL DEVICES FOR STATIONARY OPERATIONS IN ONE LANE



NOTES:
1. See Table III and Table IV for locating cones on the taper.
2. Use the same warning signs on the opposite approach.

TYPE OF ROADWAY	DISTANCE			
	A-ft	B-rate	C-mi	D-ft
Urban	200	1:10	0.5	50
Rural-Minor	350	1:20	1.0	100
Rural-Major	500	1:40	1.0	100

TYPICAL APPLICATIONS OF TRAFFIC CONTROL DEVICES FOR MOVING OPERATIONS ON THE SHOULDER



NOTES:
1. For work within the median, use the same treatment for both directions of travel.

TYPE OF ROADWAY	DISTANCE		
	A-ft	B-mi	C-ft
Urban	200	0.5	50
Rural-Minor	350	1.0	100
Rural-Major	500	1.0	200
Expressway	750	2.0	300

TABLE C-III
TAPER RATES AND LENGTHS

HIGHWAY DESIGN SPEED (MPH)	85% HIGHWAY SPEED (MPH)	RATIO (RATE)	TAPER LENGTHS			
			9' Lane	10' Lane	11' Lane	12' Lane
10	9	1:10	90	100	110	120
20	18	1:20	180	200	220	240
30	27	1:30	270	300	330	360
40	34	1:40	340	400	440	480
50	40	1:50	450	500	550	600
60	48	1:60	540	600	660	720
70	59	1:70	630	700	770	840

TABLE C-IV
LOCATION OF CONES OR BARRICADES

TYPE	NUMBER CONES OR BARRICADES	INTERVALS IN FEET BETWEEN CONES OR BARRICADES									
		1	2	3	4	5	6	7	8	9	10
URBAN	9	16	24	32	40	48	56	64	68		
	10	16	24	32	40	48	56	64	68		
MINOR RURAL ROUTE	10	20	36	44	52	60	68	76	84	88	
	11	28	36	44	52	60	68	76	84	88	88
MAJOR RURAL ROUTE	10	38	46	54	62	70	78	86	94	98	
	11	38	46	54	62	70	78	86	94	98	98
FREEWAY	10	48	56	64	72	80	88	96	104	108	
	11	48	56	64	72	80	88	96	104	108	108

NOTE: Additional cones or barricades may be added to the start of the taper by maintaining the even spacing of the last distance.

MAINTENANCE OF TRAFFIC

TRAFFIC SHALL BE MAINTAINED ON THE EXISTING PAVEMENT WITHOUT INTERRUPTION DURING CONSTRUCTION OF THE WORK EXCEPT AS OTHERWISE APPROVED BY THE ENGINEER. THE CONTRACTOR SHALL SET UP AND OPERATE HIS EQUIPMENT IN SUCH A MANNER AS TO ENCR OACH UPON THE TRAVELED WIDTH OF THE PAVEMENT TO A MINIMUM EXTENT.

THE CONTRACTOR SHALL ERECT AND MAINTAIN ALL WARNING AND INFORMATIONAL SIGNS. THESE SIGNS WILL BE FURNISHED BY THE STATE. THE CONTRACTOR SHALL DETERMINE WHAT SIGNS ARE NEEDED AND ADVISE THE ENGINEER TWO (2) WEEKS IN ADVANCE OF THE TIME THEY WILL BE NEEDED FOR TRAFFIC MAINTENANCE.

THE CONTRACTOR SHALL FURNISH AND MAINTAIN ALL FLAGS, FLAGMEN, WATCHMEN, BARRICADES, SIGN SUPPORTS, CONES AND INCIDENTALS RELATED THERETO.

OTHER SIGNS (REGULATORY AND ROUTE GUIDE TYPE) AND SUPPORTS NEEDED TO MAINTAIN TRAFFIC WILL BE FURNISHED, ERECTED AND MAINTAINED BY OTHERS.

LANE RESTRICTIONS ON ANY ROADWAY OR STREET SHALL OCCUR DURING HOURS OTHER THAN 7:00 A.M TO 9:00 A.M. AND 4:00 P.M. TO 6:00 P.M. MONDAY THROUGH FRIDAY.

WHEN IT IS NECESSARY TO STOP ALL TRAFFIC FOR ERECTION OF OVERHEAD SUPPORTS, THE WORK SHALL BE SO ARRANGED THAT THE STOPPAGE IS LESS THAN TEN (10) MINUTES IN ANY ONE (1) CONSECUTIVE THIRTY (30) MINUTE PERIOD.

NO TRAFFIC STOPPAGE SHALL OCCUR FOR ERECTION OF OVERHEAD SUPPORTS WITHOUT ENFORCEMENT PERSONNEL AT EACH SITE FOR ASSISTANCE IN CONTROLLING TRAFFIC AND INFORMING DRIVERS AS TO THE NATURE OF THE DELAY.

PROPER SIGNS, CONES, BARRICADES AND FLAGMEN SHALL BE UTILIZED IN CONFORMANCE WITH THE OHIO MANUAL OF UNIFORM TRAFFIC CONTROL DEVICES FOR STREETS AND HIGHWAYS, 1963 EDITION.