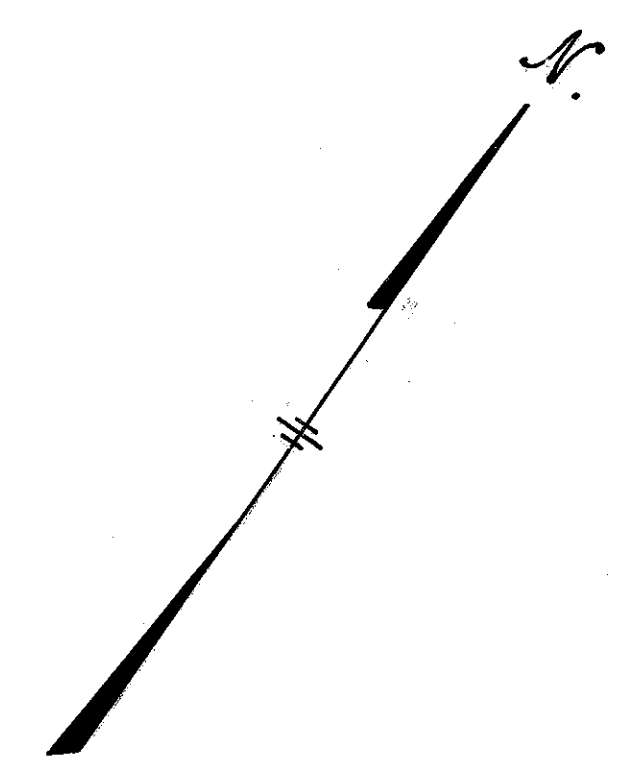


FED. RD. DIVISION	STATE	PROJECT	FISCAL YEAR
2	OHIO		

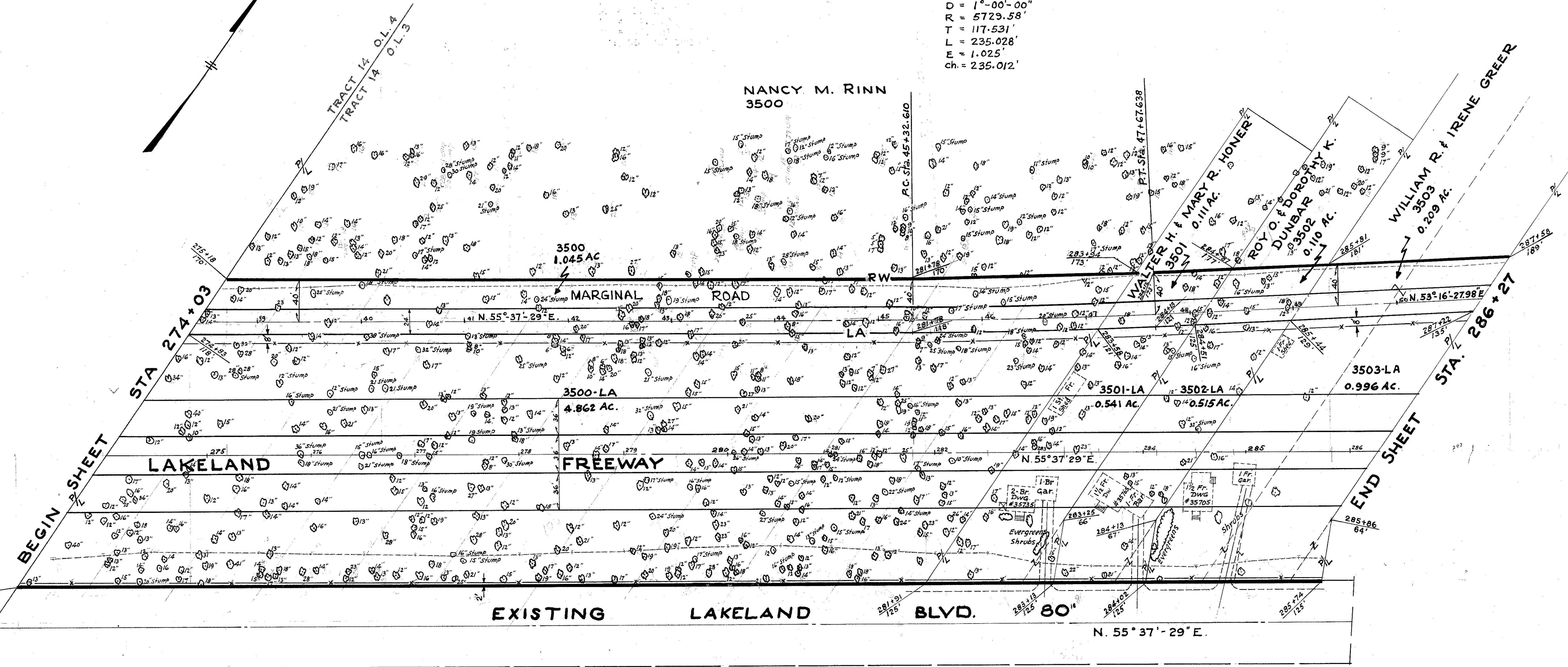
128
394

LAKE COUNTY
LAK-2 - 0.00
LIMITED ACCESS

± MARGINAL RD. CURVE DATA
 A = 2°-21'-01.02"
 D = 1°-00'-00"
 R = 5729.58'
 T = 117.531'
 L = 235.028'
 E = 1.025'
 ch. = 235.012'



NANCY M. RINN
3500



2500 LIN. FT. 55-18 FENCE TYRE #C
Scale: 1" = 50'