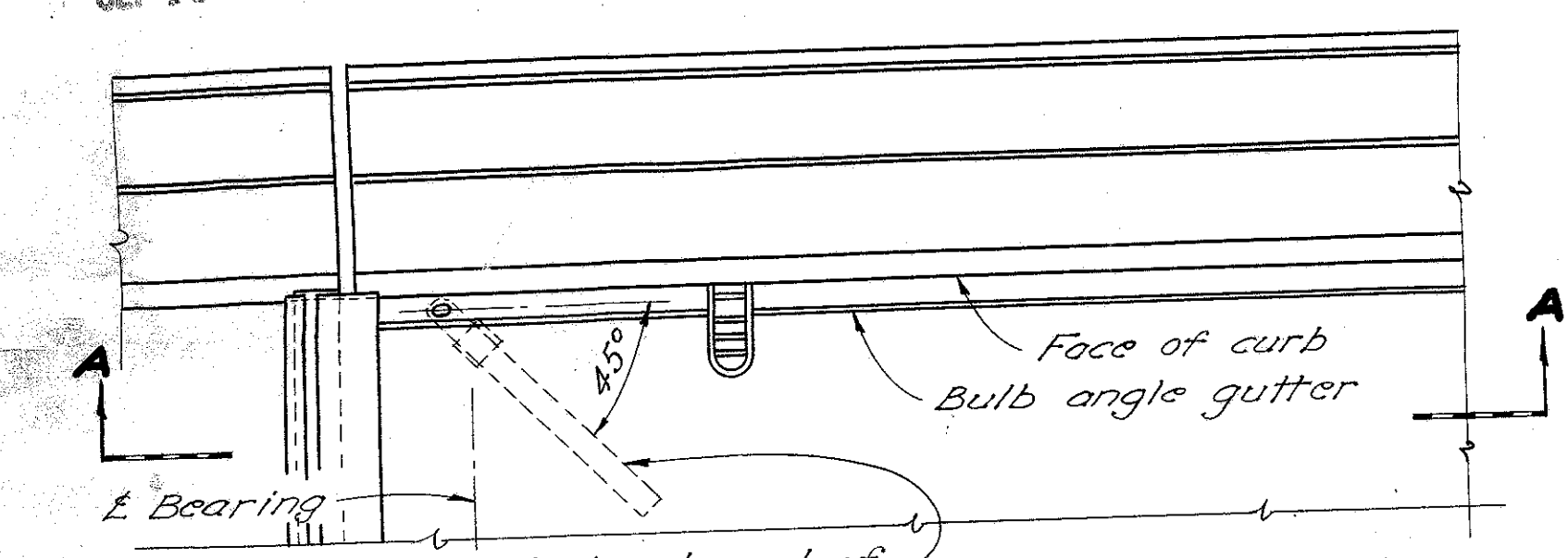


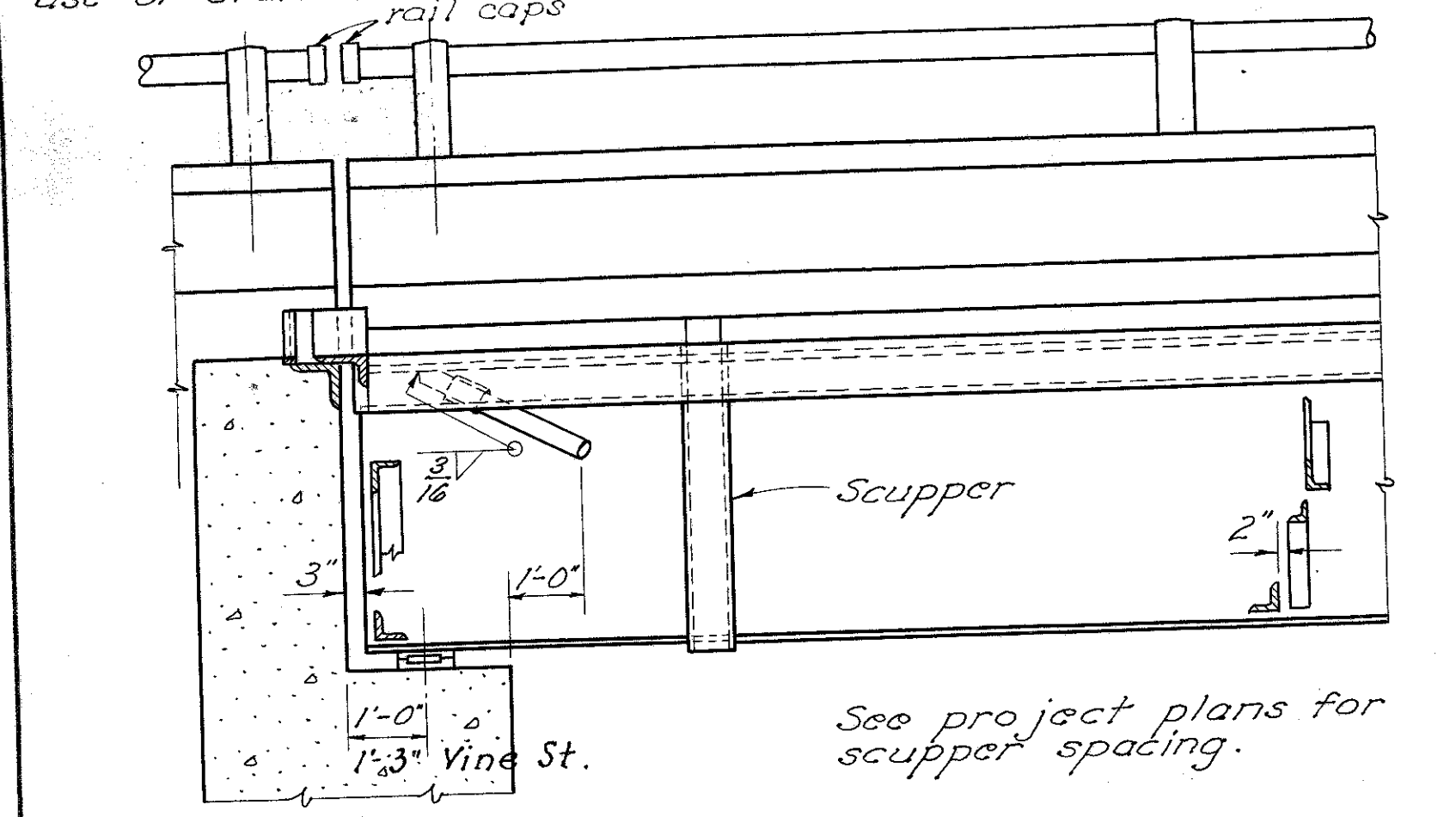
MICROFILMED
SEP 18 1986

LAK-2-0.00



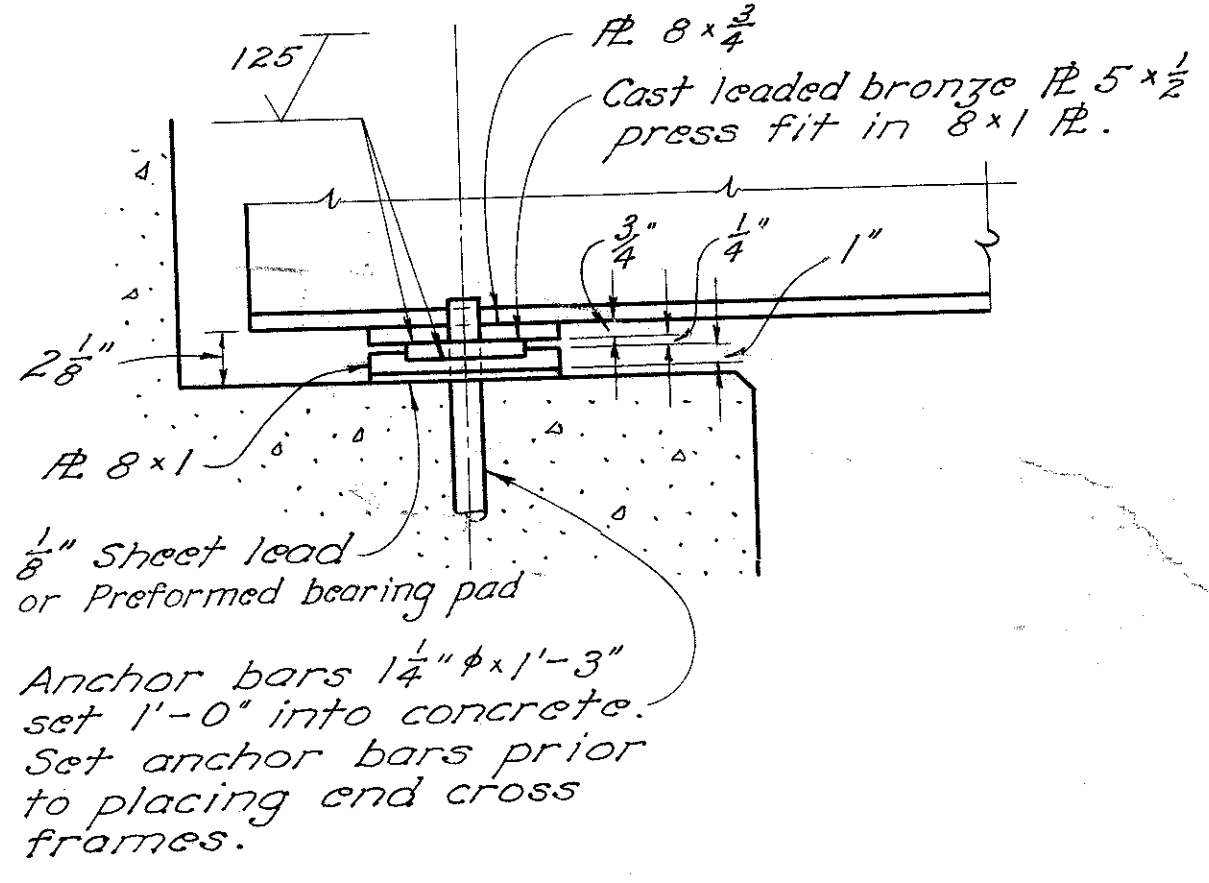
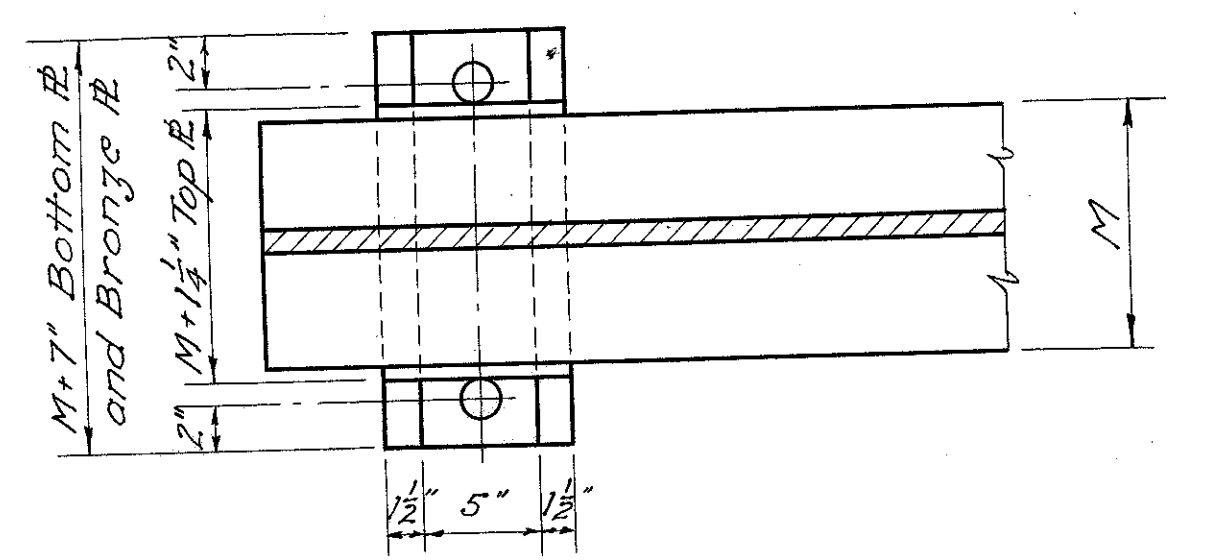
PART PLAN AT ABUTMENT

2" Dia. standard pipe drain at end of B.A. gutter where grade slopes down to end dam. Use standard elbow and coupling. A welded bend may be used where space does not permit use of standard rail elbow.



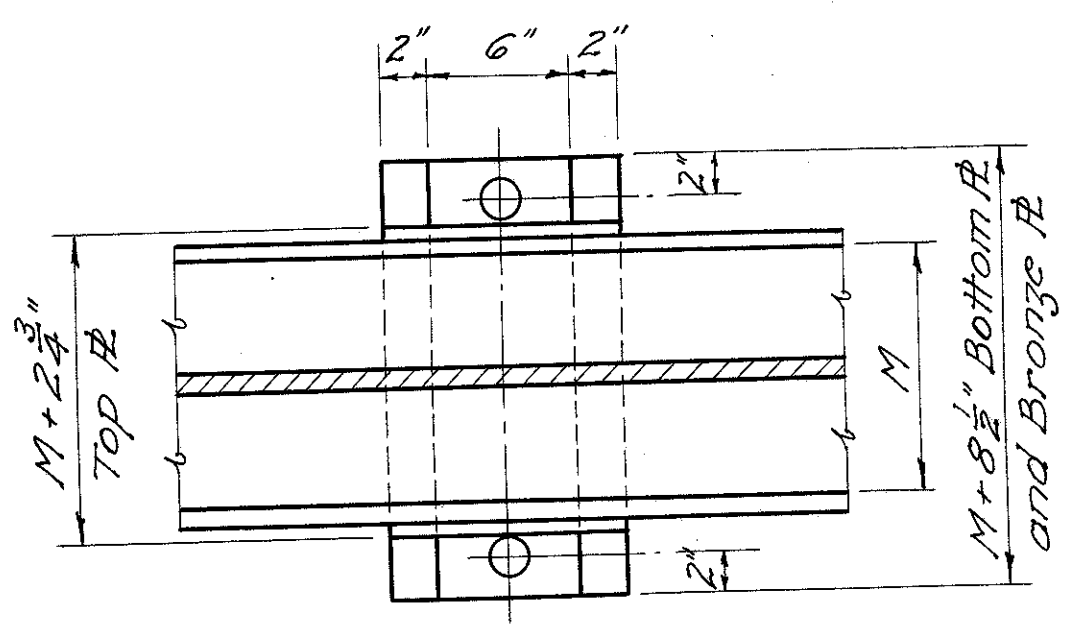
SECTION A-A

See project plans for scupper spacing.

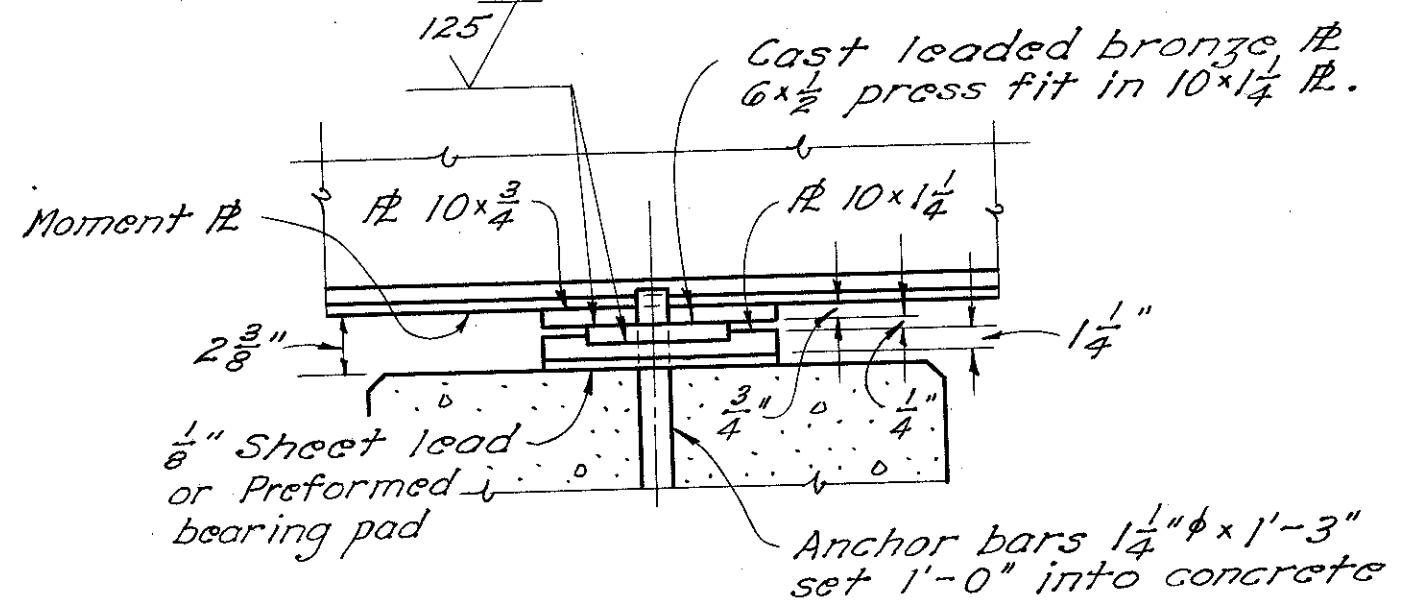


ABUTMENT BEARING PLATES

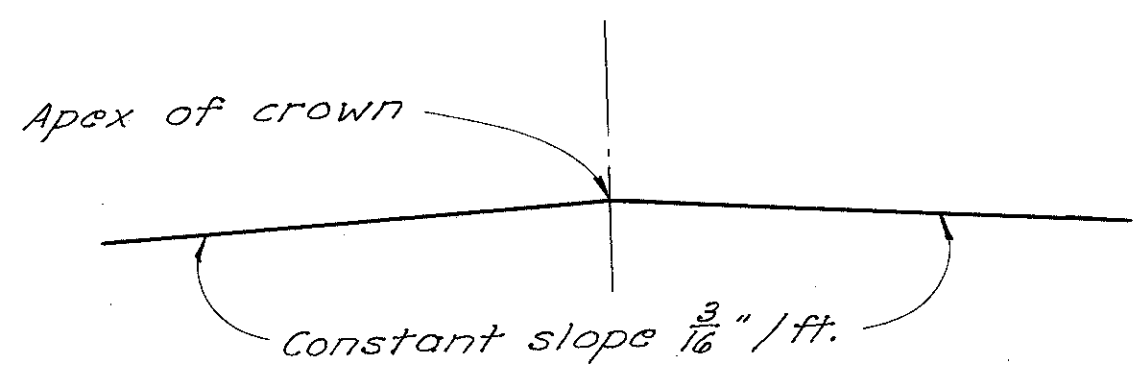
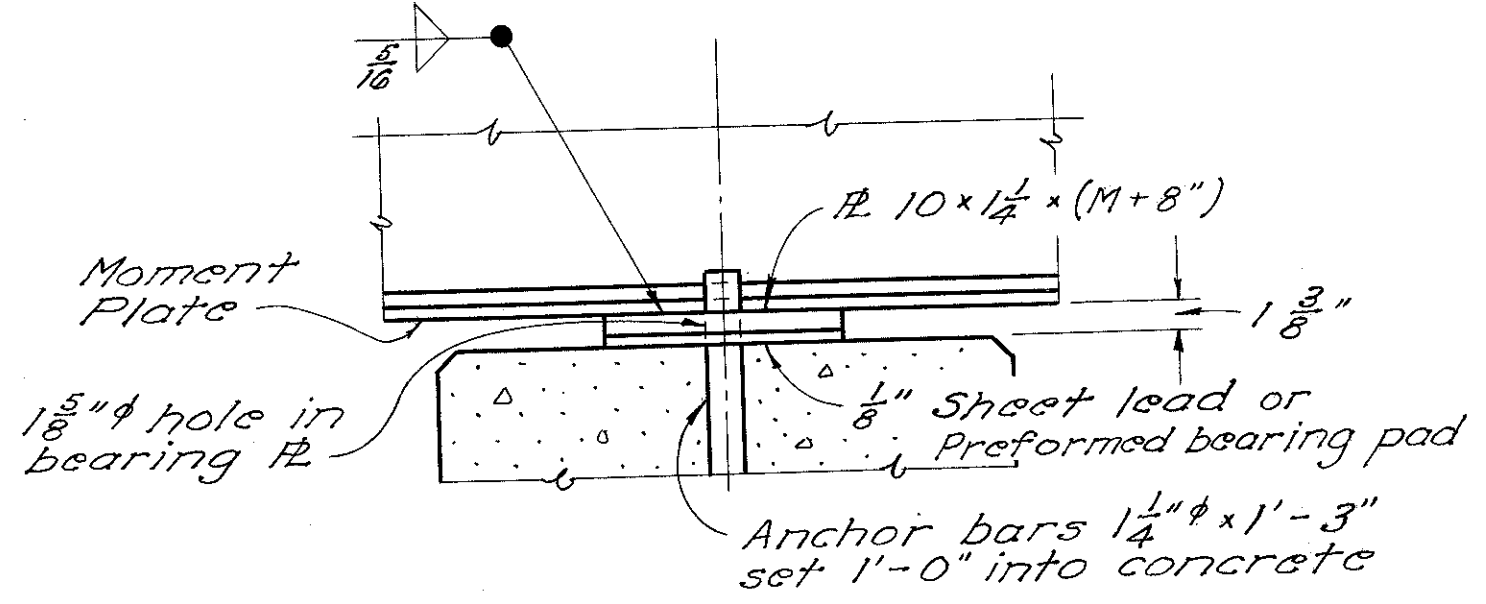
Anchor bars 1 1/2" x 1'-3" set 1'-0" into concrete. Set anchor bars prior to placing end cross frames.



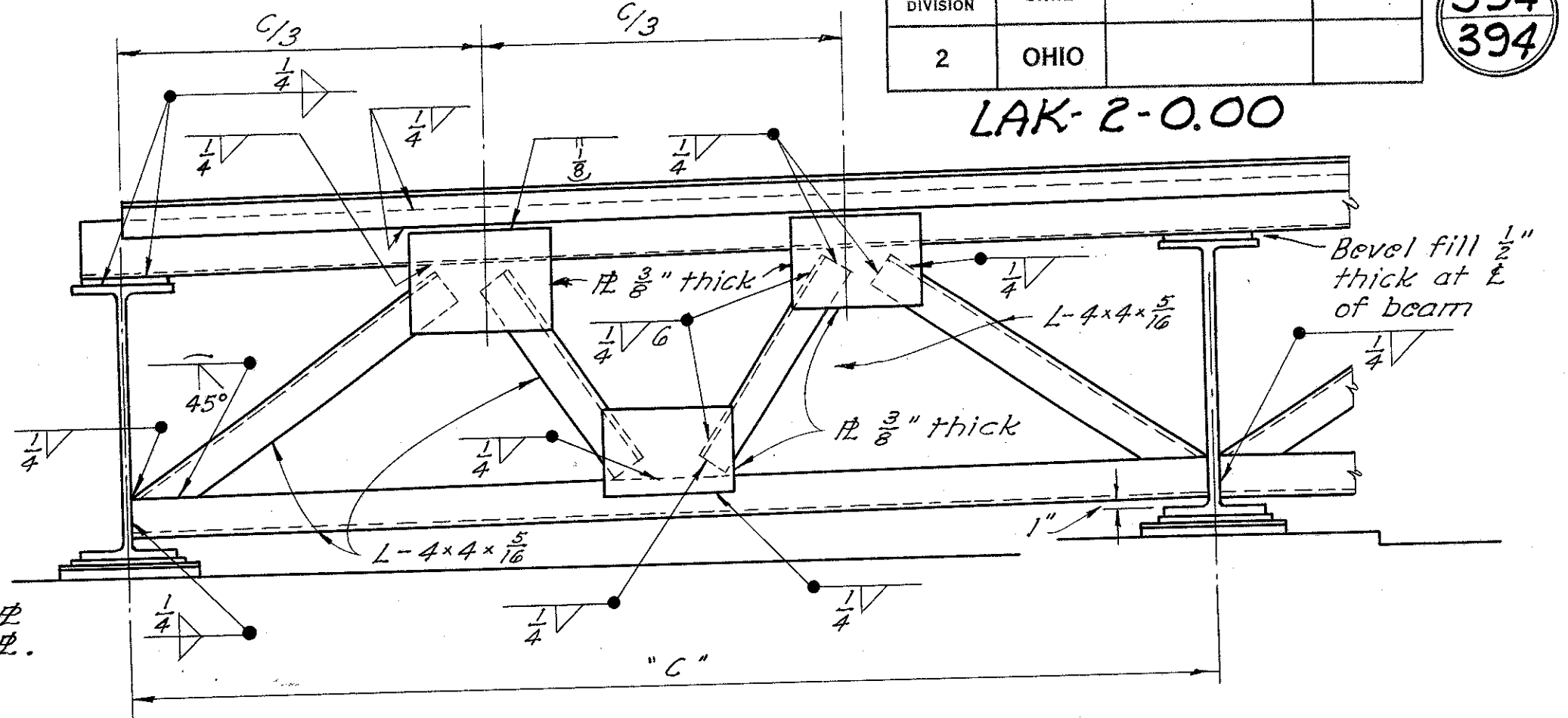
EXPANSION



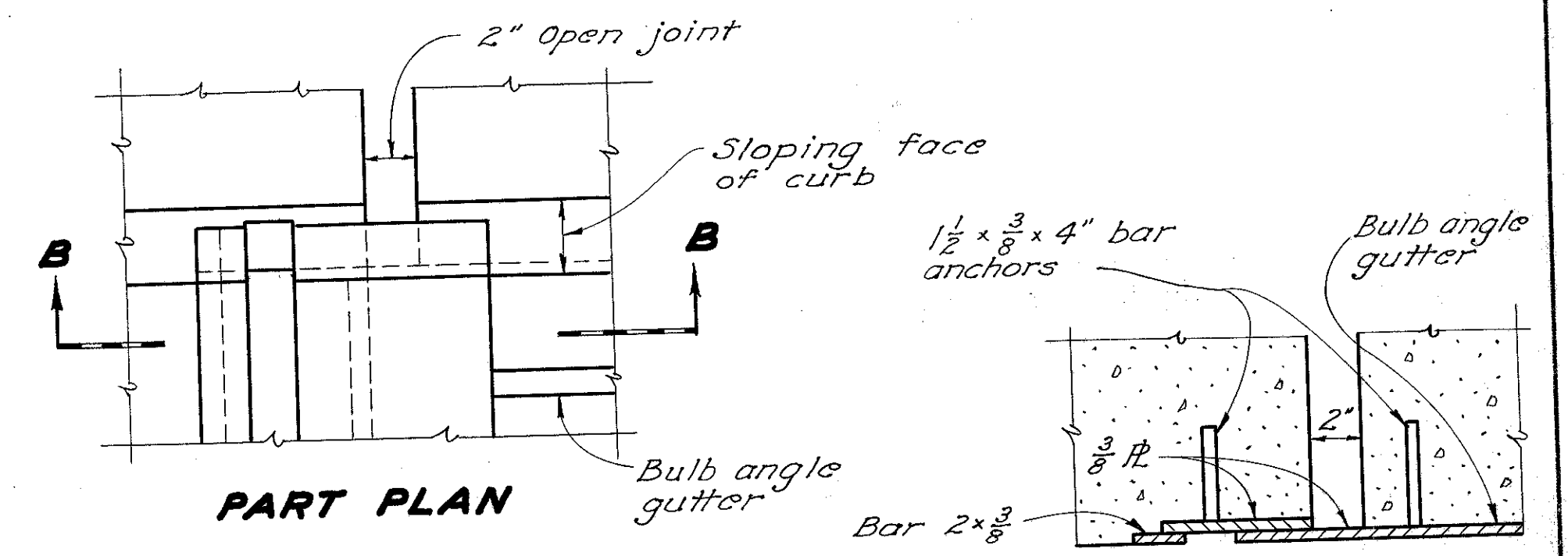
PIER BEARING PLATES



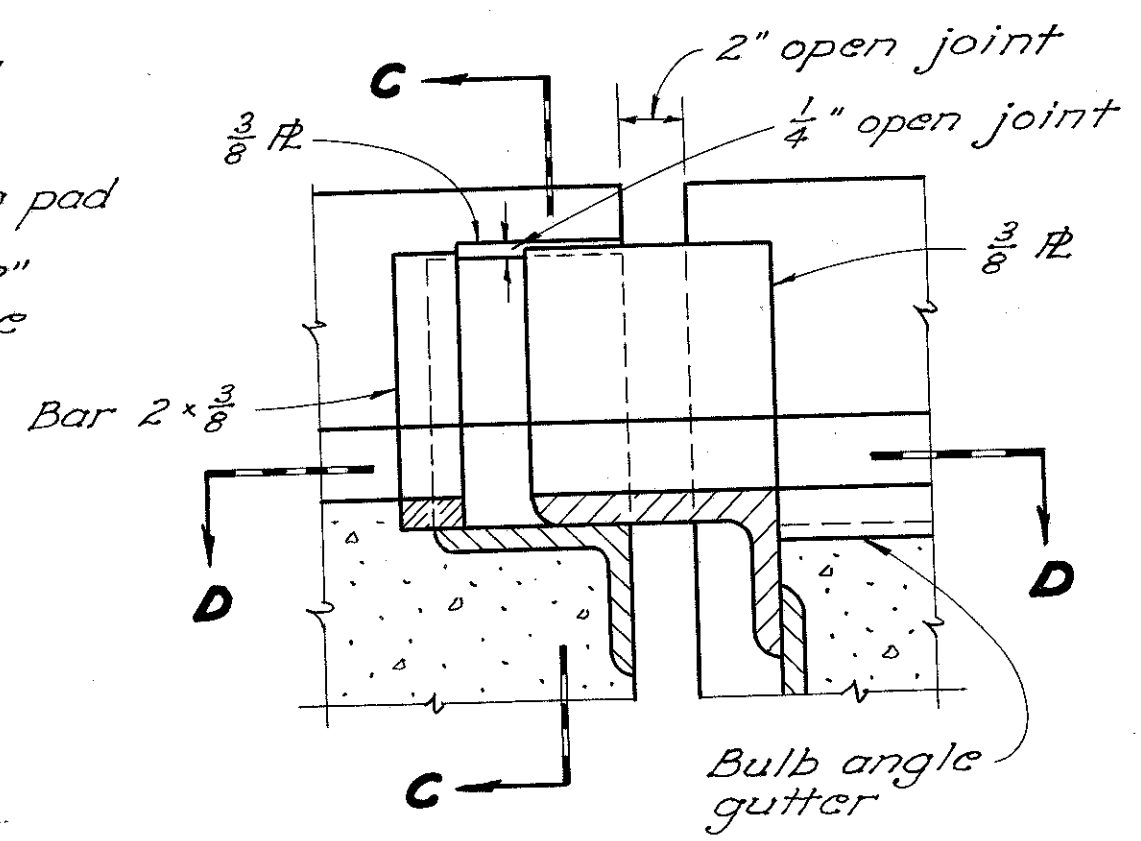
BRIDGE ROADWAY CROWN
(For structures not super-elevated)



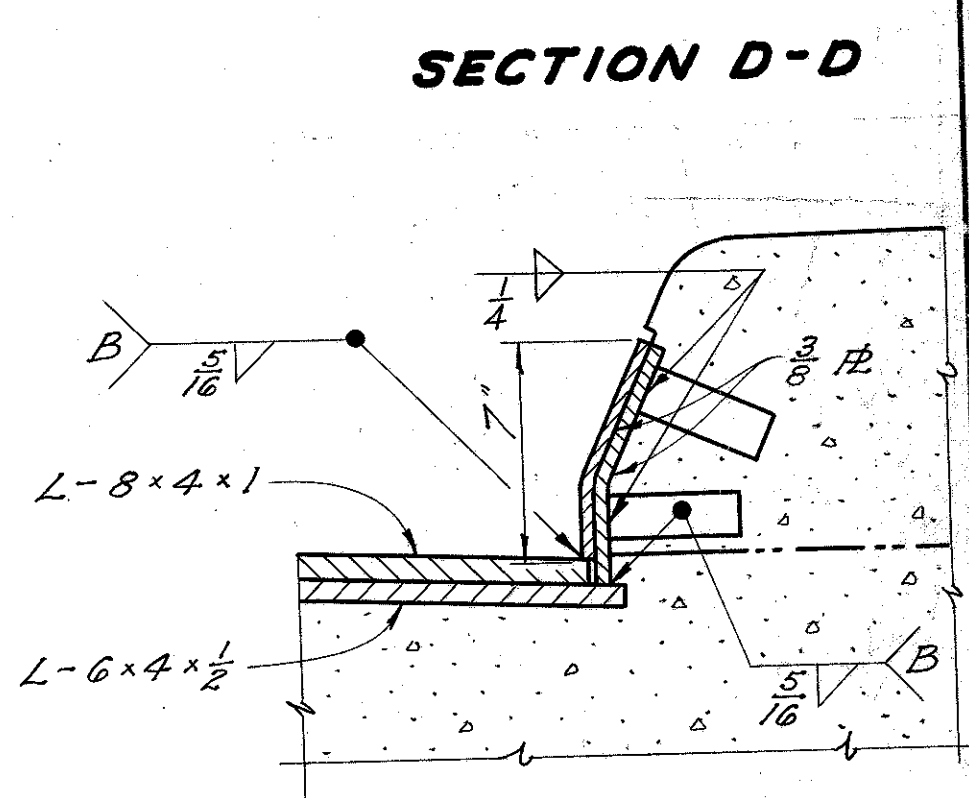
END CROSSFRAME DETAILS



PART PLAN



SECTION B-B

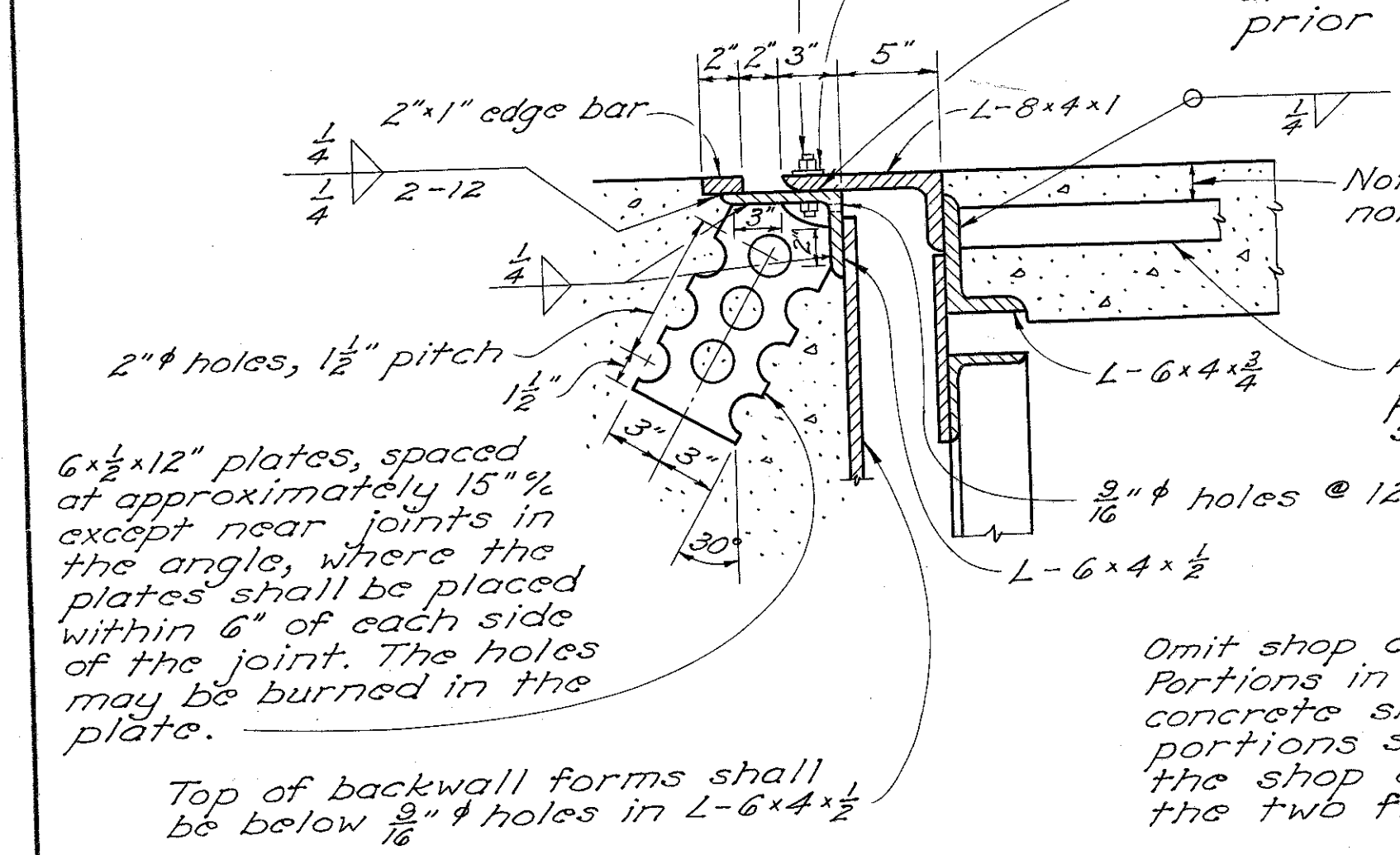


SECTION C-C

CURB PLATE DETAILS

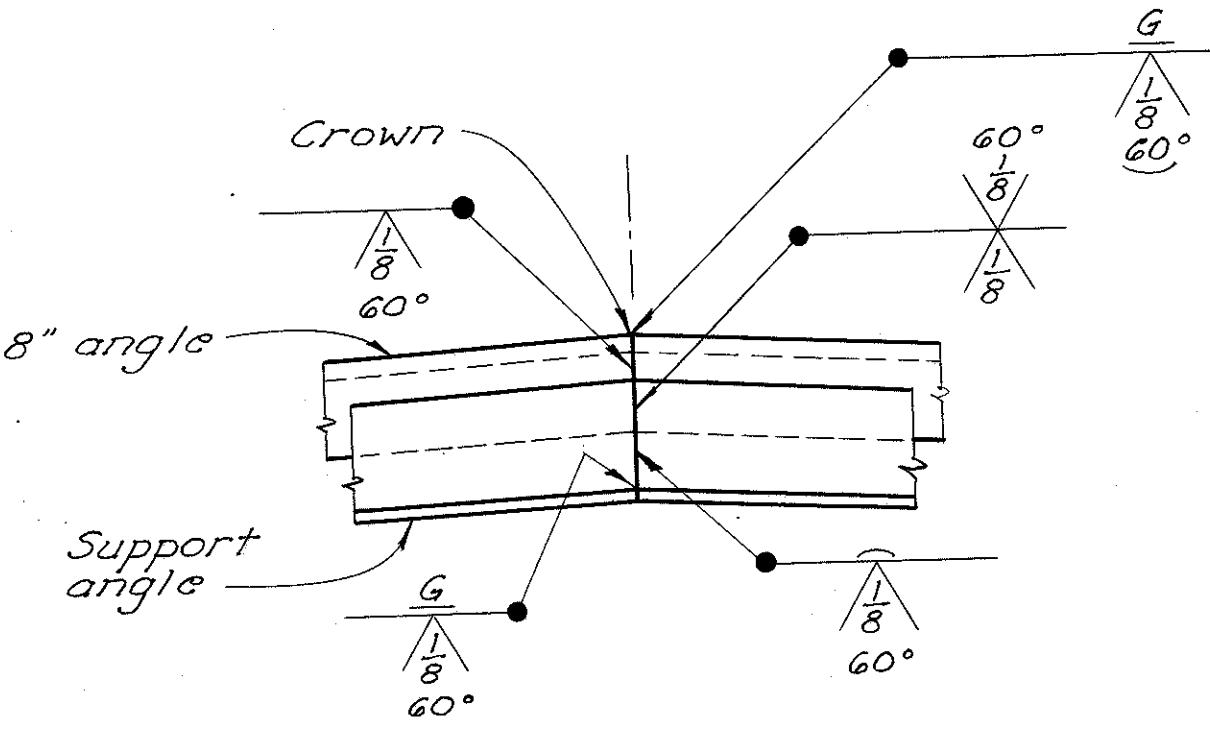
5/8" x 2" bolts at not more than 2'-0" o/c with nuts tack-welded to underside of lower angle. Center 5/8" bolts in 1/16" holes in upper angle. Center 5/8" bolts in 1/16" holes. Apply flake graphite between washers and angle. Turn bolt tight and re-lease one-half turn. Remove bolts as soon as concrete has set, preferably within two hours after placing, to avoid damage due to temperature expansion or contraction of superstructure. Fill holes with bituminous material.

This contact surface shall not be painted and shall be lubricated with flake graphite prior to placing of backwall concrete.

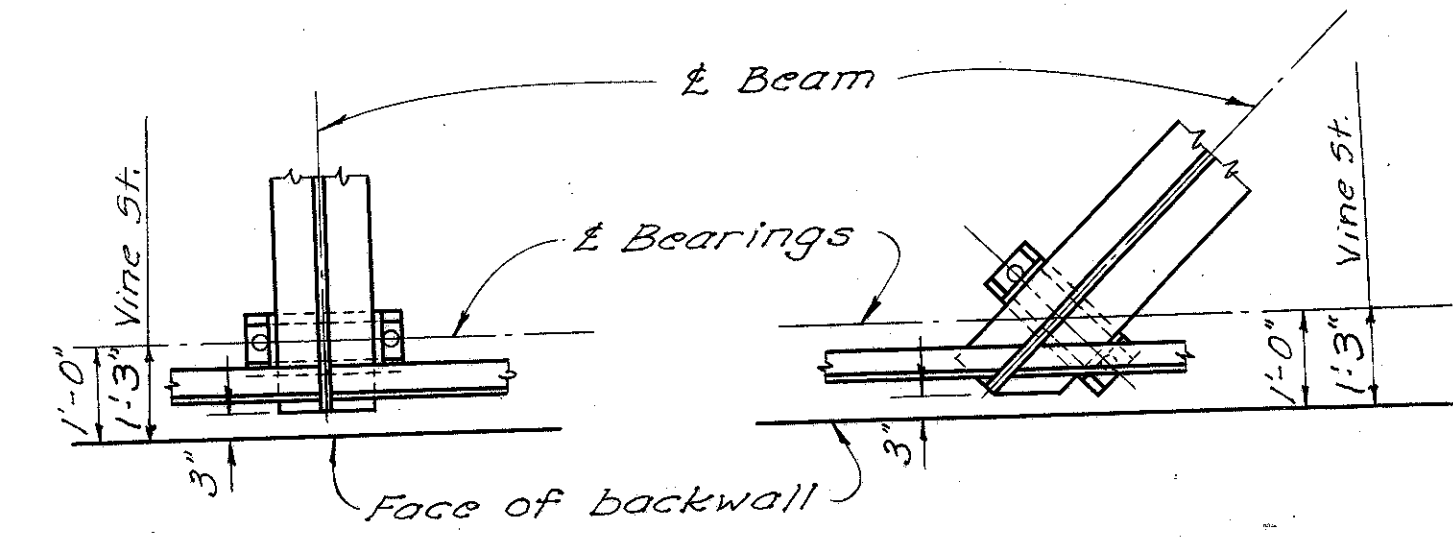


END DAM DETAILS

Omit shop coat on all portions of end dam. Portions in contact with steel or with concrete shall not be painted. All other portions shall be cleaned and given the shop coat in the field as well as the two field coats.



WELDED BUTT JOINT IN SUPER-STRUCTURE END DAM ANGLES AT APEX OF CROWN



BEAM END DETAILS
FOR SQUARE BRIDGES FOR SKEWED BRIDGES

STATE OF OHIO DEPARTMENT OF HIGHWAYS DIVISION OF DESIGN AND CONSTRUCTION BUREAU OF BRIDGES					
COMMON DETAILS					
LAKELAND EXPRESSWAY					
Lake County					
DESIGNED	DRAWN	TRACED	CHECKED	REVIEWED	DATE
RHN	RHY	pro		gfr	11-19-59
					REVISED
					12-4-58