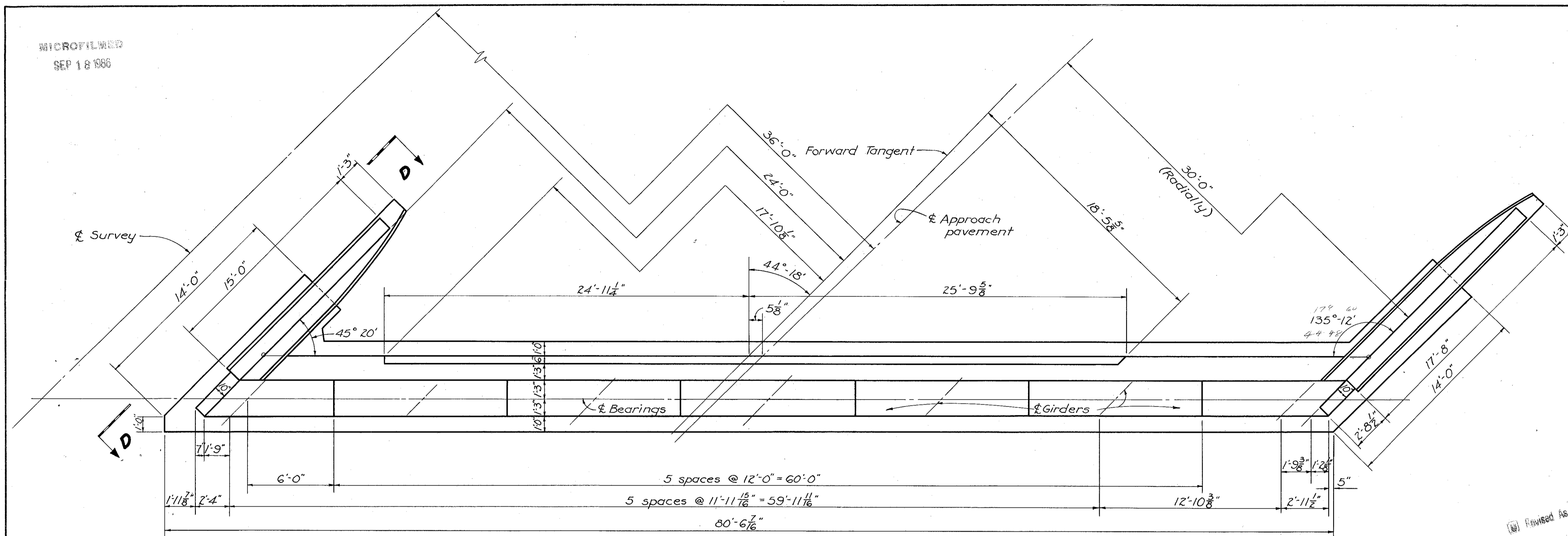


MICROFILMED  
SEP 18 1986

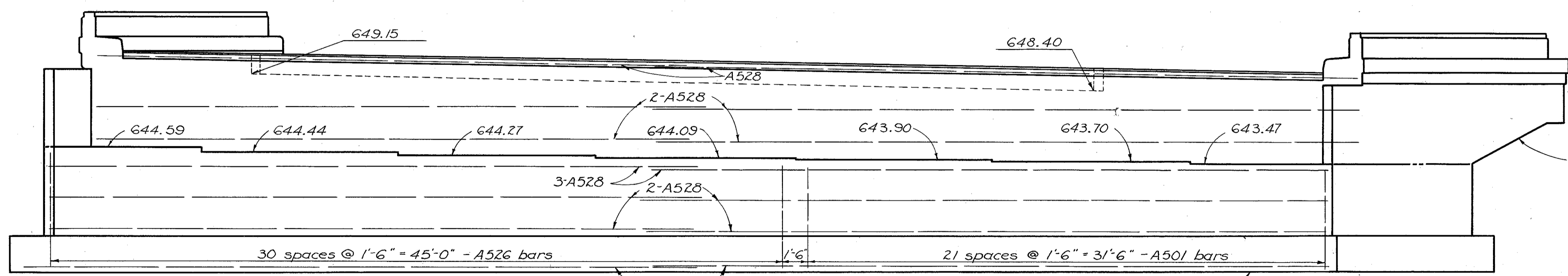
FED. RD. DIVISION	STATE	PROJECT	
2	OHIO		

388  
394

LAK-2-0.00



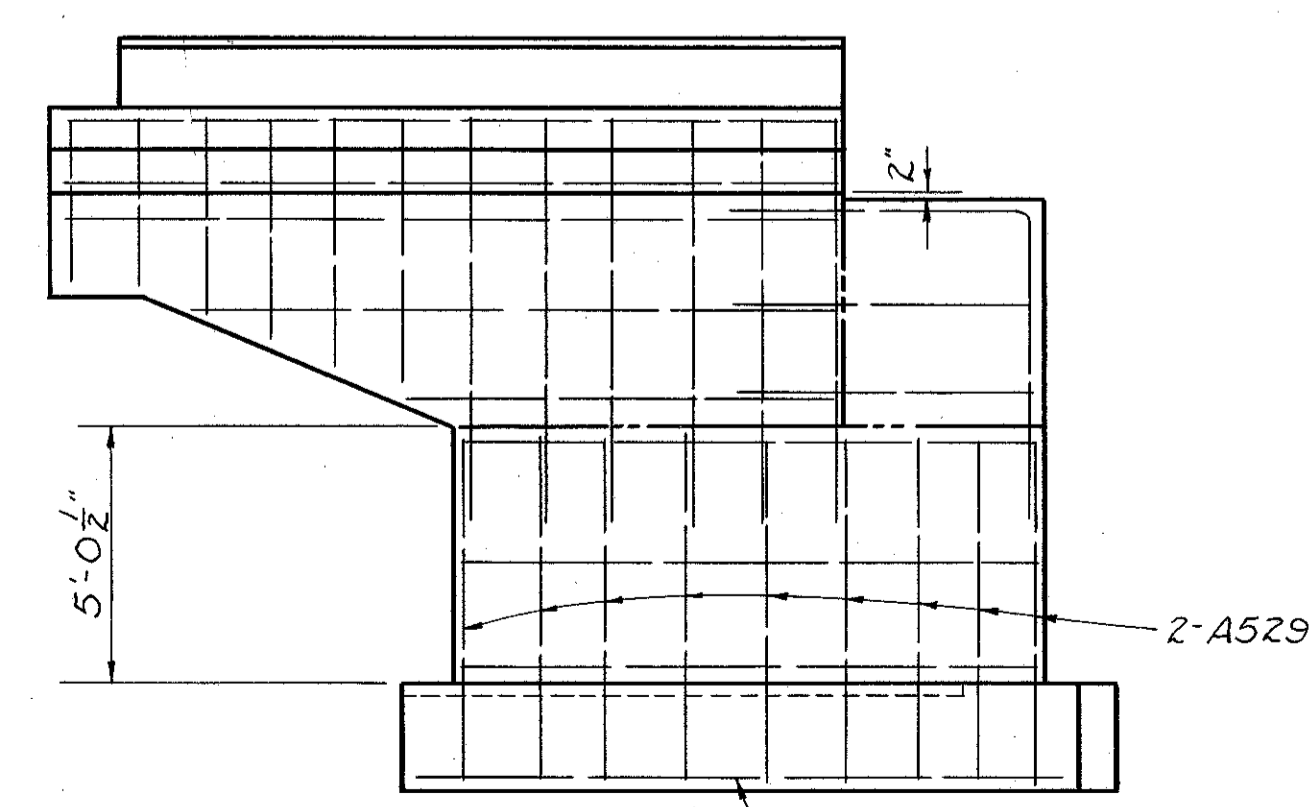
PLAN



ELEVATION

Revised As-Built  
Revised As-Built

See View B-B, sheet No. 386  
for details of reinforcing steel.



VIEW D-D

For additional details see View CC sheet No. 386

ESTIMATED QUANTITIES

ITEM	TOTAL	UNIT	DESCRIPTION	SUPER.	ABUTS.	PIERS	GEN.	As Built	
E-2	795	Cu. Yd.	Unclassified excavation		505	290		Co-3 + 200	995
S-1	766	Cu. Yd.	Class "C" concrete, superstructure	766					
S-1	177	Cu. Yd.	Class "C" concrete, pier caps and columns				177		
S-1	149	Cu. Yd.	Class "E" concrete, pier footings				149		
S-1	575	Cu. Yd.	Class "E" concrete, abutments		575				
S-4	296,201	Lbs.	Reinforcing steel	225,708	22,055	48,438			
S-7	755,000	Lbs.	Structural steel	755,000					
S-8	755,000	Lbs.	Field painting of structural steel, as per plan	755,000					
S-14	1028.64	Lin. Ft.	Railing (aluminum rail & supports, concrete parapet)	1028.64					
S-16	Lump	Sum	First test pile				Lump		
S-18	4,140	Lin. Ft.	Steel piles 12 BP53			4,140			
S-29	154	Cu. Yd.	Porous backfill				154		

NOTE: For additional details see sheet No. 387

STATE OF OHIO  
DEPARTMENT OF HIGHWAYS  
DIVISION OF DESIGN AND CONSTRUCTION  
BUREAU OF BRIDGES

**REAR ABUTMENT DETAILS FOR WESTBOUND LANES AND ESTIMATED QUANTITIES**  
BRIDGE No. LAK-2-0401 L & R  
OVER VINE STREET  
LAKE COUNTY  
STA. 310+54.21  
312+82.13

DESIGNED	DRAWN	TRACED	CHECKED	REVIEWED	DATE	REVISED
RHN	RHN	JGW	Kay	BFG	12-31-58	2-20-59

Revised As-Built VLA-6-11-63