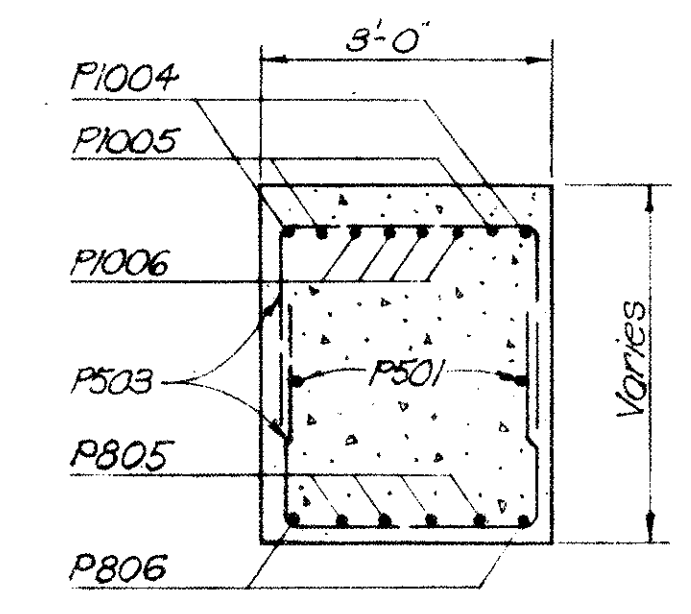
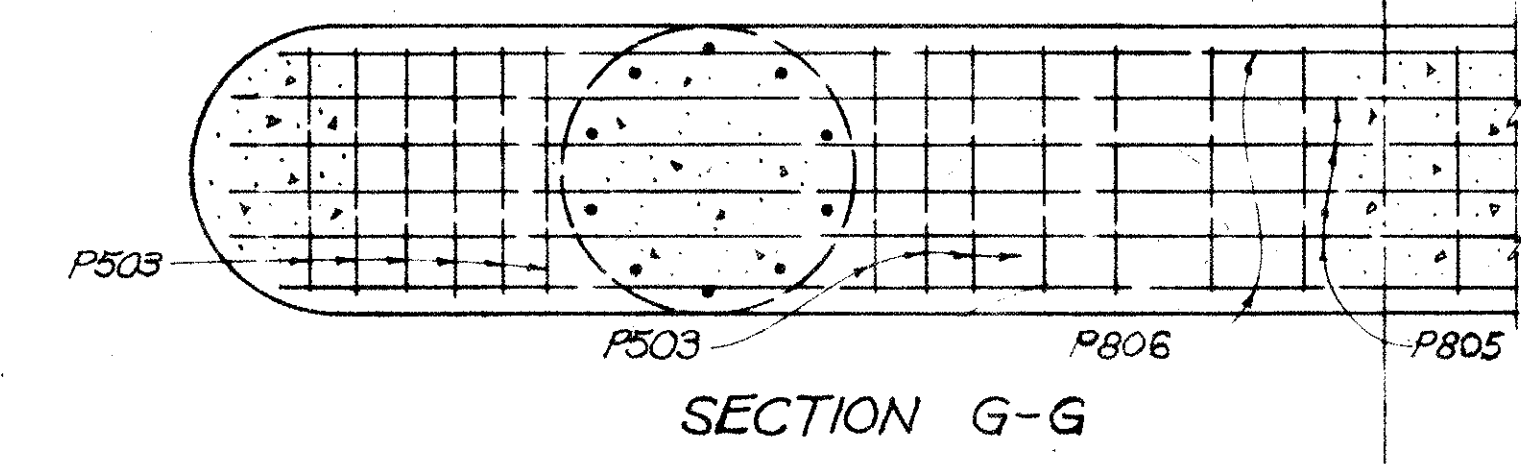
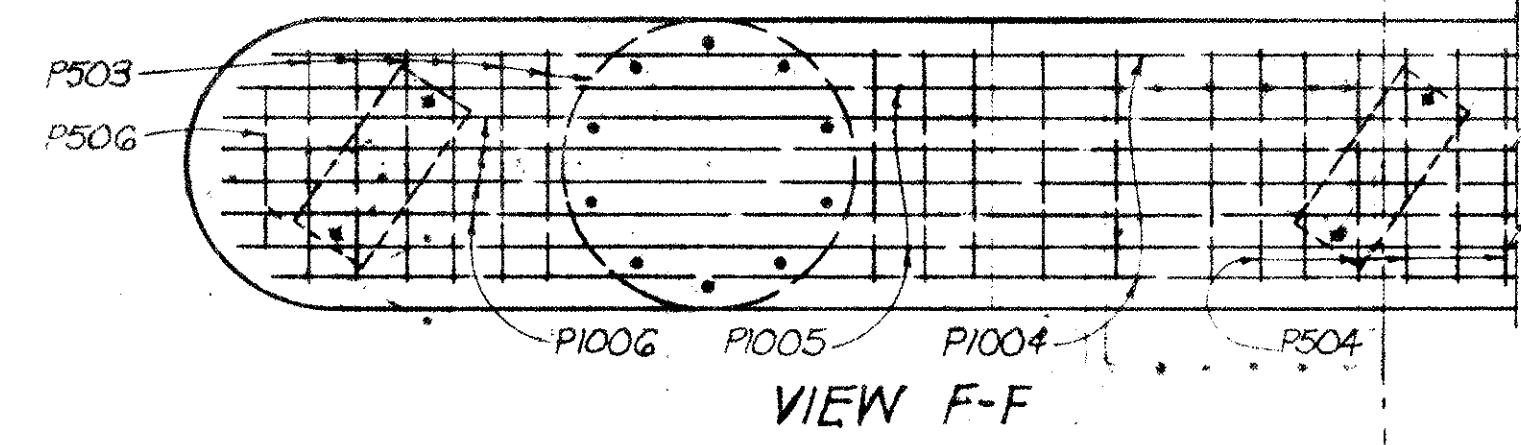
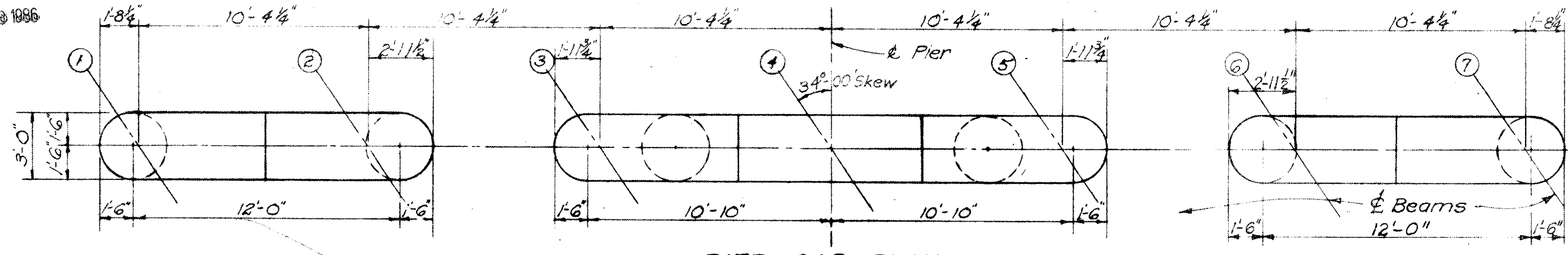


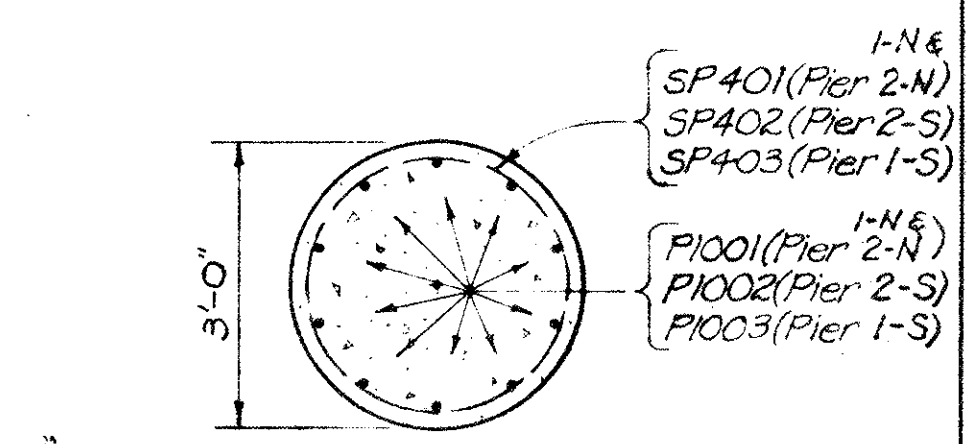
MICROFILMED  
SEP 18 1986

FED. RD. DIVISION	STATE	PROJECT	352 394
2	OHIO		

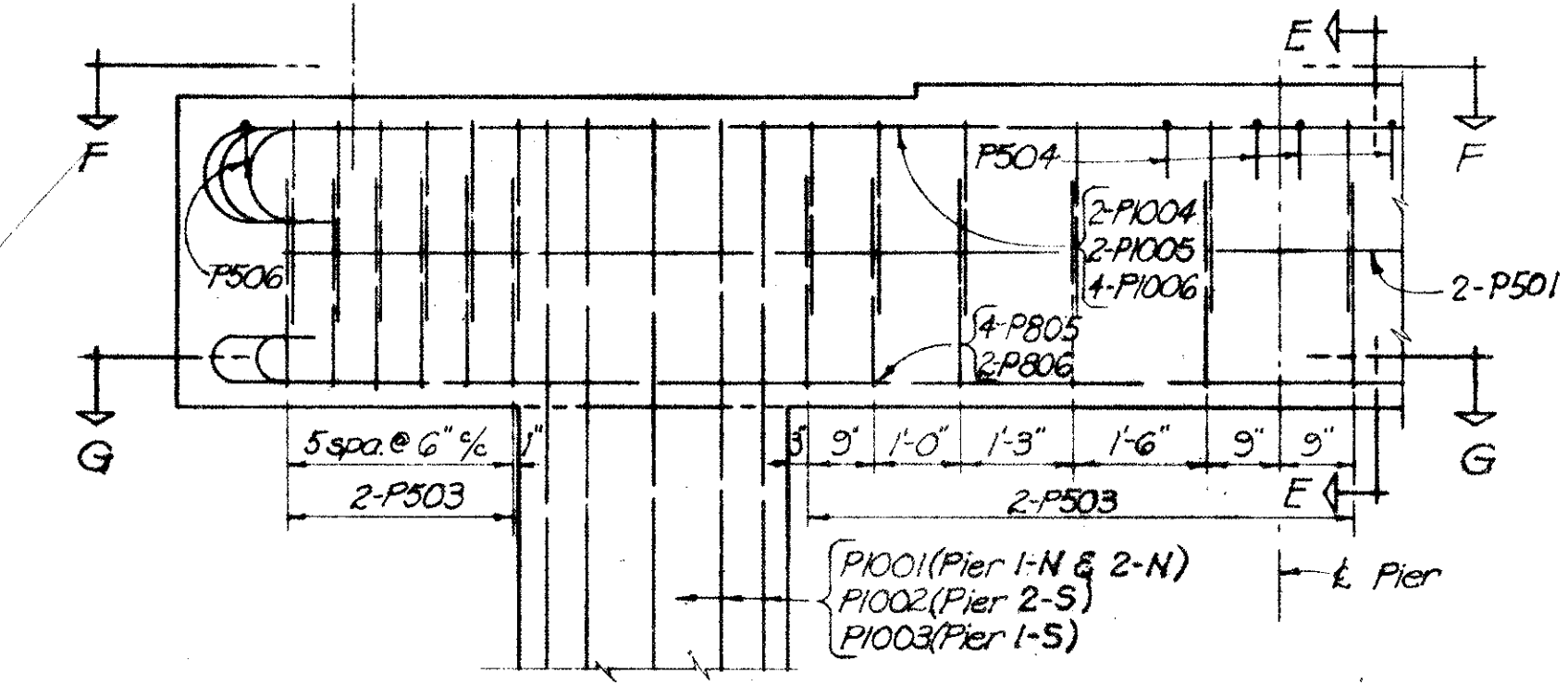
LAK-2-000



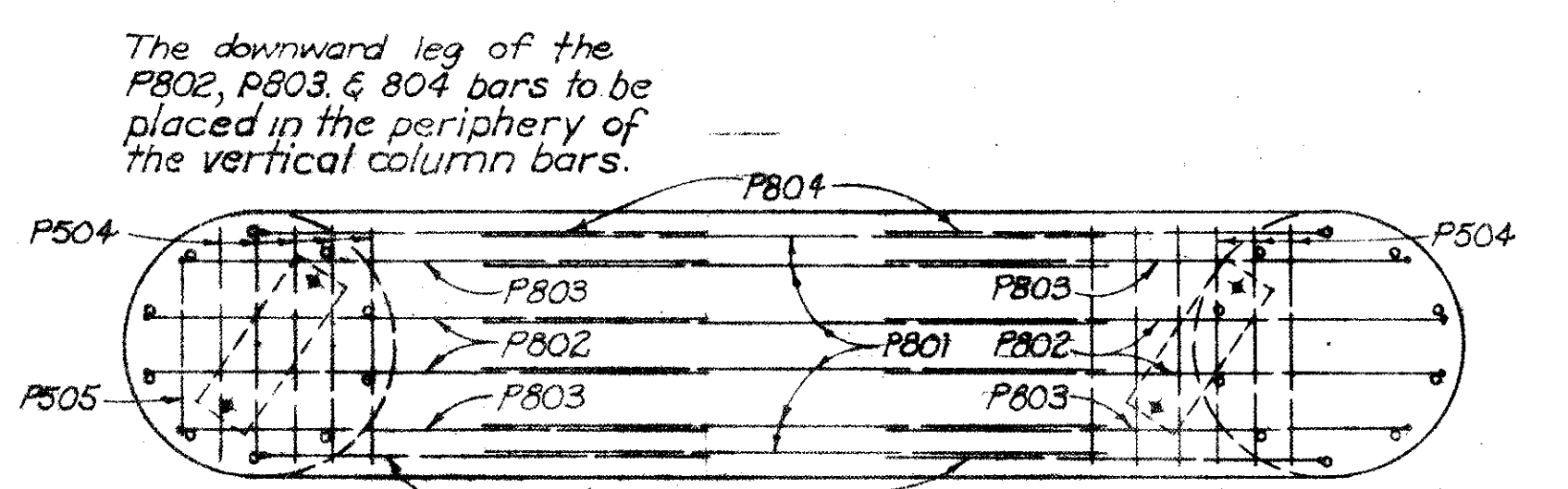
SECTION E-E



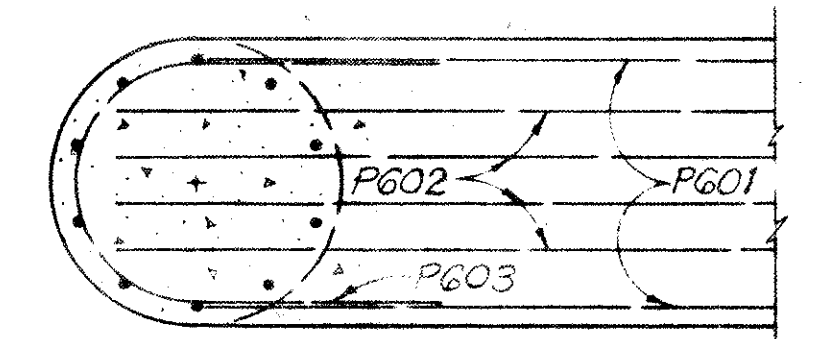
SECTION A-A



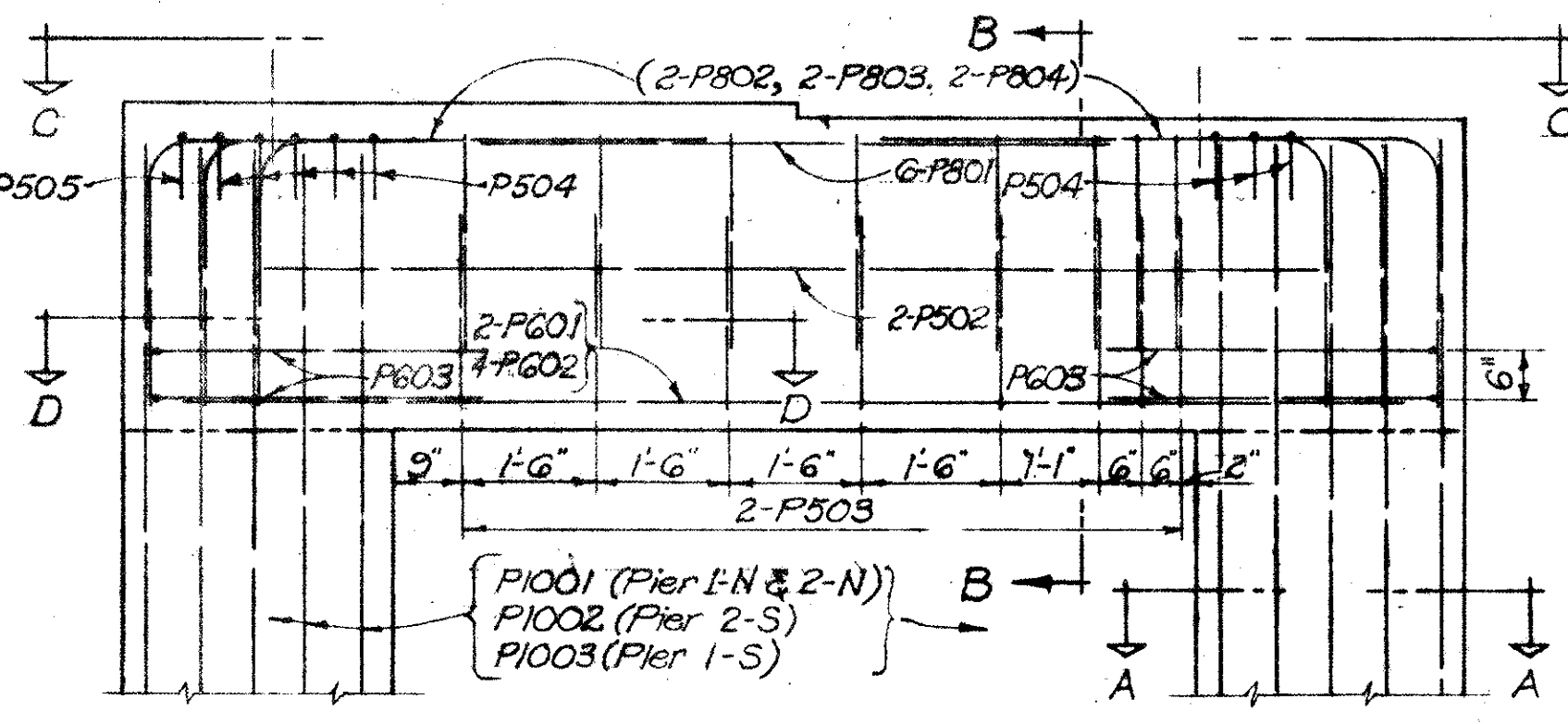
INTERIOR BAY OF PIER



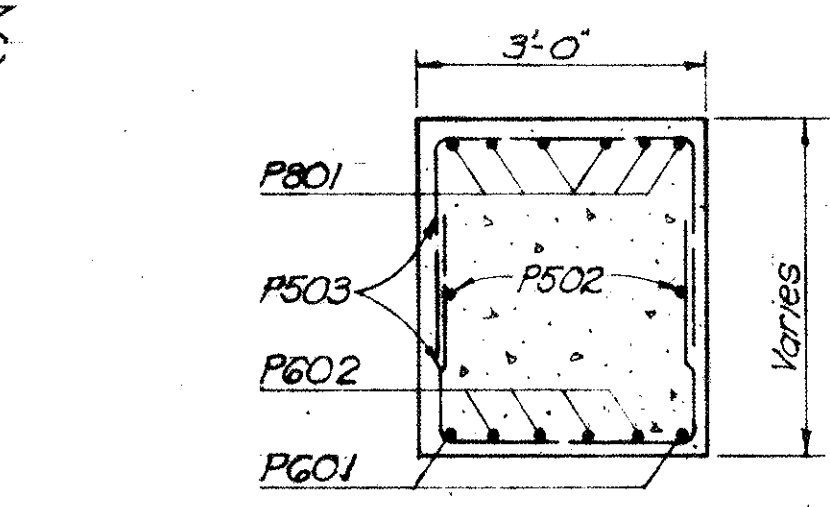
VIEW C-C



SECTION D-D



EXTERIOR BAY OF PIER



SECTION B-B

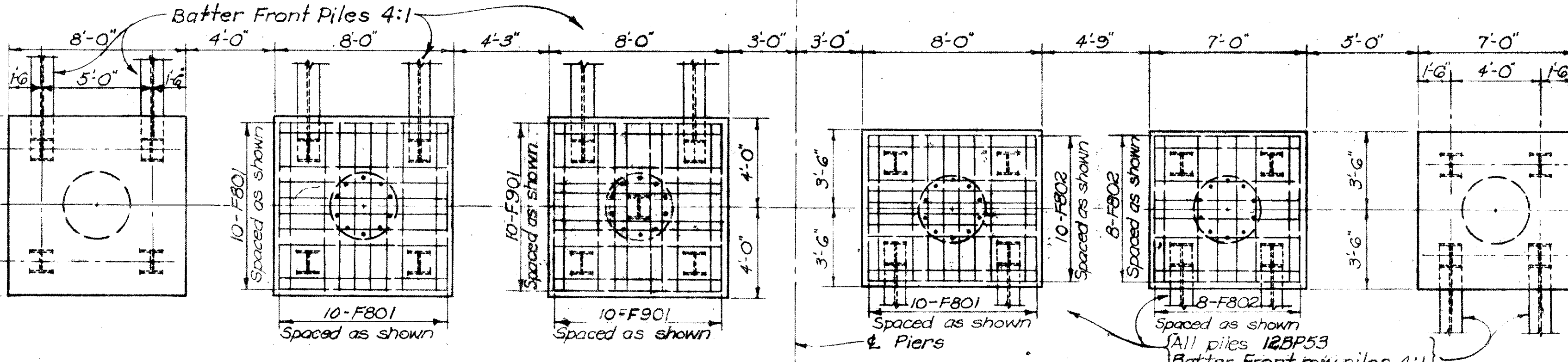
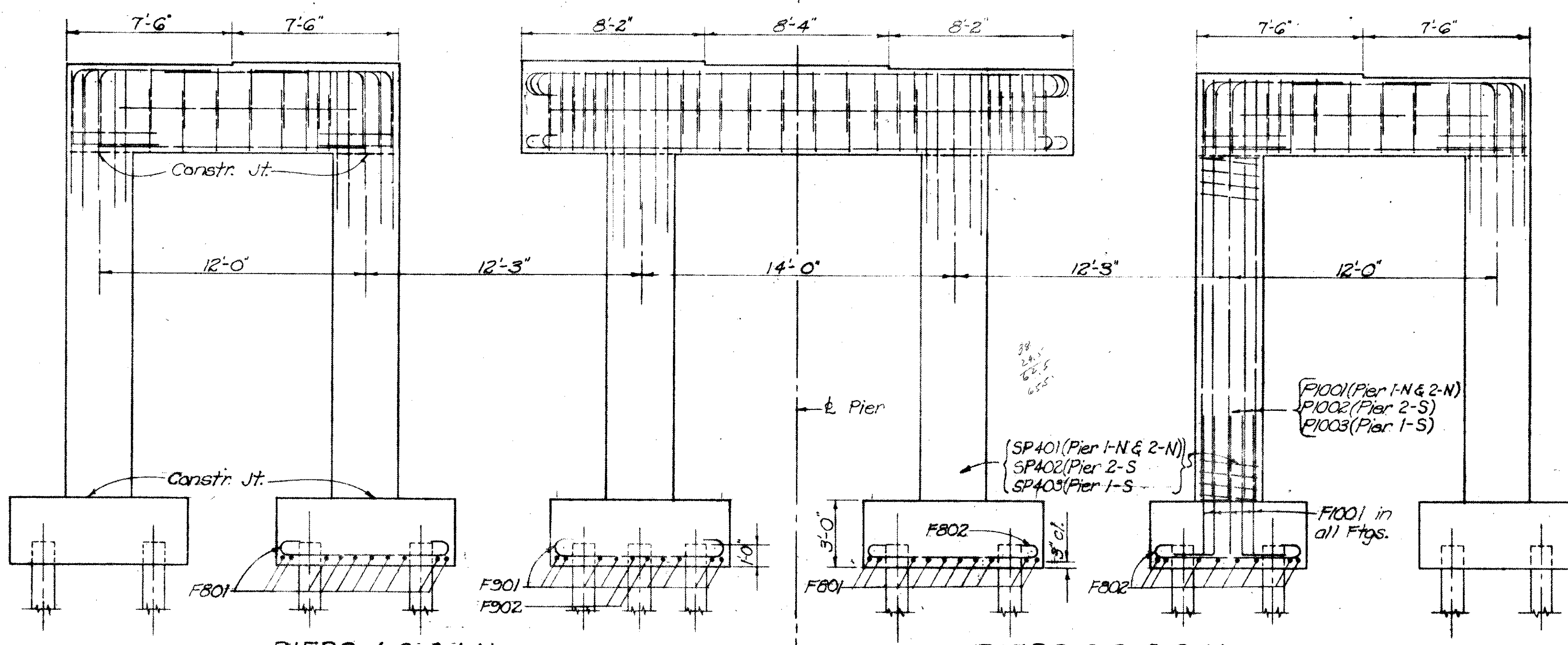


	TABLE OF ELEVATIONS							Top of Column	Bottom of Ftgs.
	Bearing Area								
	1	2	3	4	5	6	7		
Pier 1-S	645.82	645.92	646.01	645.83	645.66	645.49	645.32	641.82	626.50
Pier 2-S	646.04	646.15	646.24	646.08	645.92	645.76	645.60	642.10	626.50
Pier 1-N	645.81	645.92	646.02	646.13	646.24	646.09	645.92	642.31	626.50
Pier 2-N	645.94	646.06	646.18	646.29	646.41	646.27	646.11	642.44	626.50

Note: See General Plan for Pier designation.

NOTE:  
Special care shall be taken in placing reinforcing steel in the bridge seat so that it will not interfere with the drilling of anchor bolt holes.

STATE OF OHIO  
DEPARTMENT OF HIGHWAYS  
DIVISION OF DESIGN AND CONSTRUCTION  
BUREAU OF BRIDGES

PIER DETAILS  
BRIDGE NO. LAK-2-0363 L&R  
OVER BEIDLER ROAD  
LAKE COUNTY STA. 291+88.11  
293+25.53

DESIGNED	DRAWN	TRACED	CHECKED	REVIEWED	DATE	REVISED
J.V.G.	Mosier	J.V.G.	E.B.L.	qf	11-28-58	