

MICROFILMED  
SEP 18 1986

FED. RD. DIVISION	STATE	PROJECT	380 394
2	OHIO		

LAK-2-000

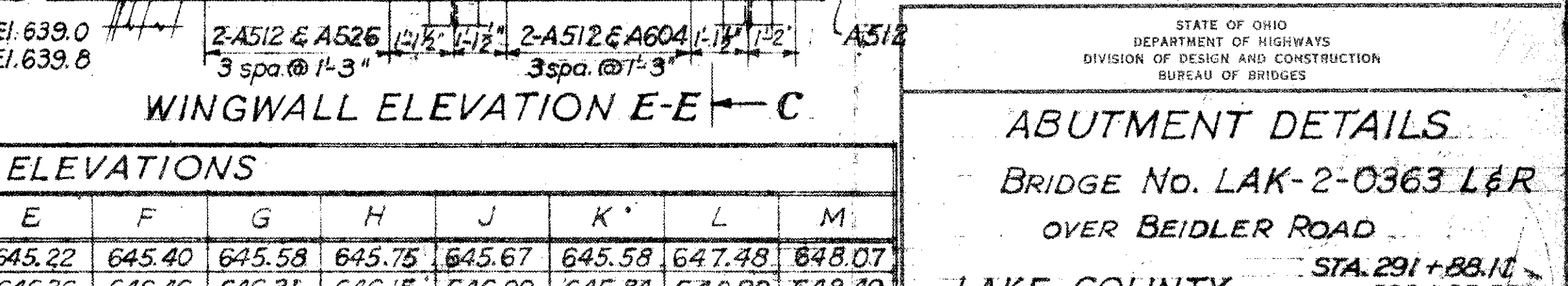
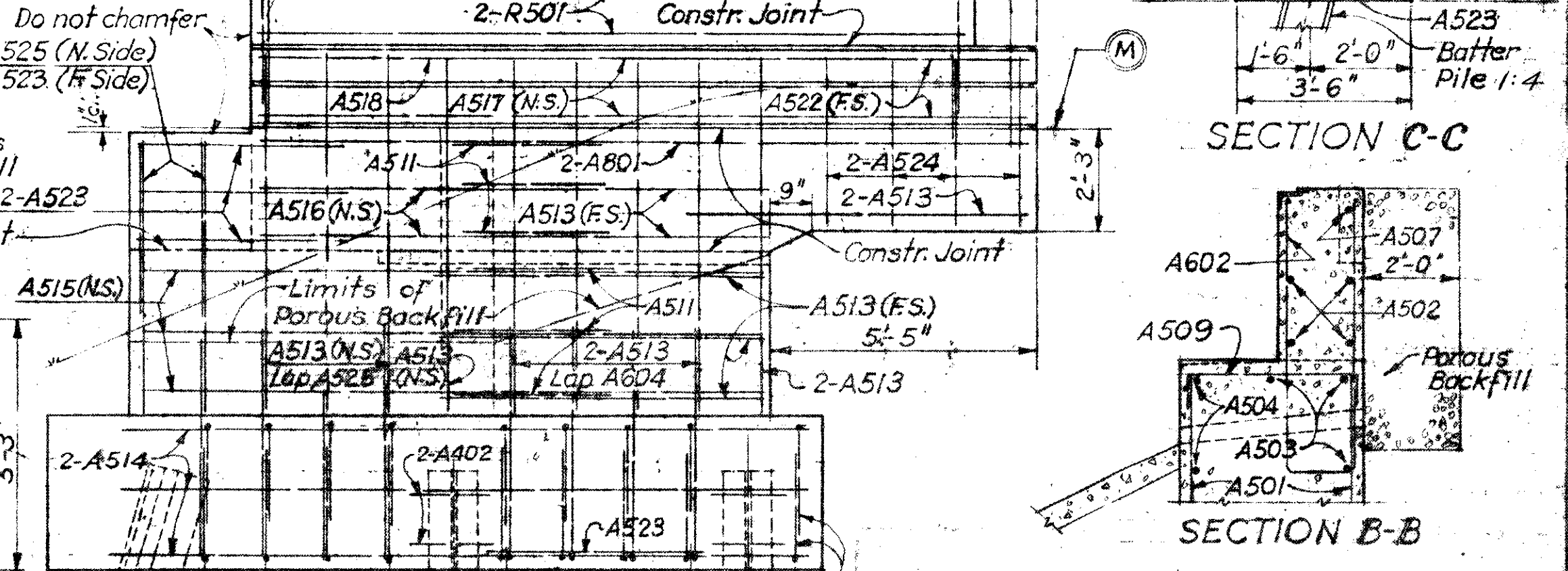
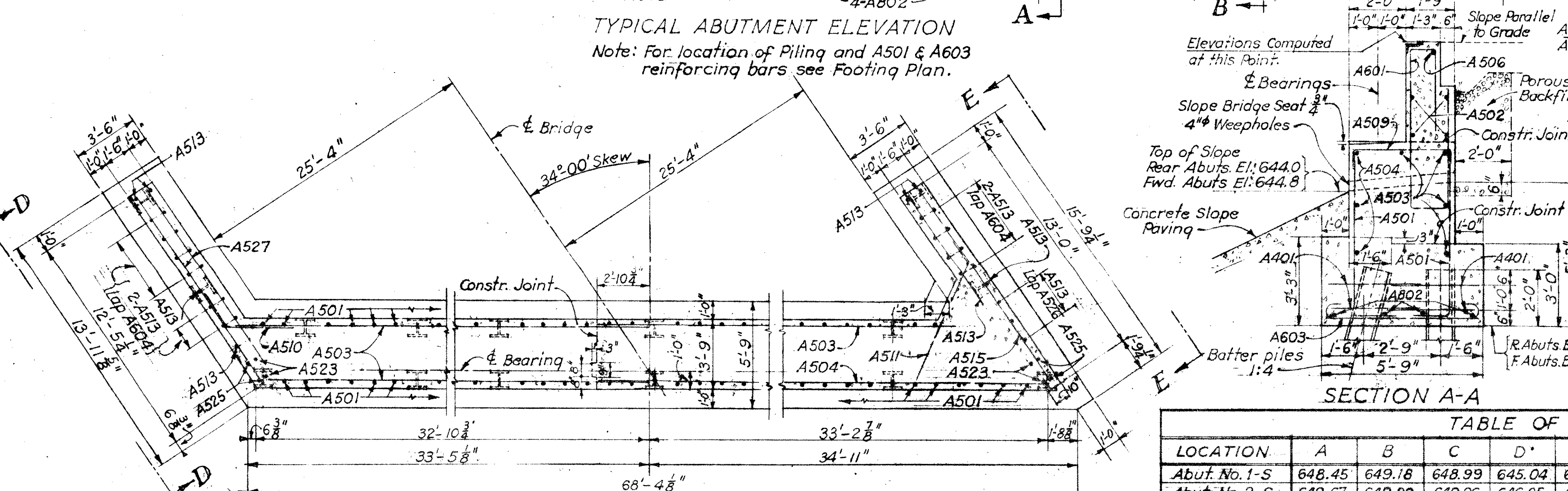
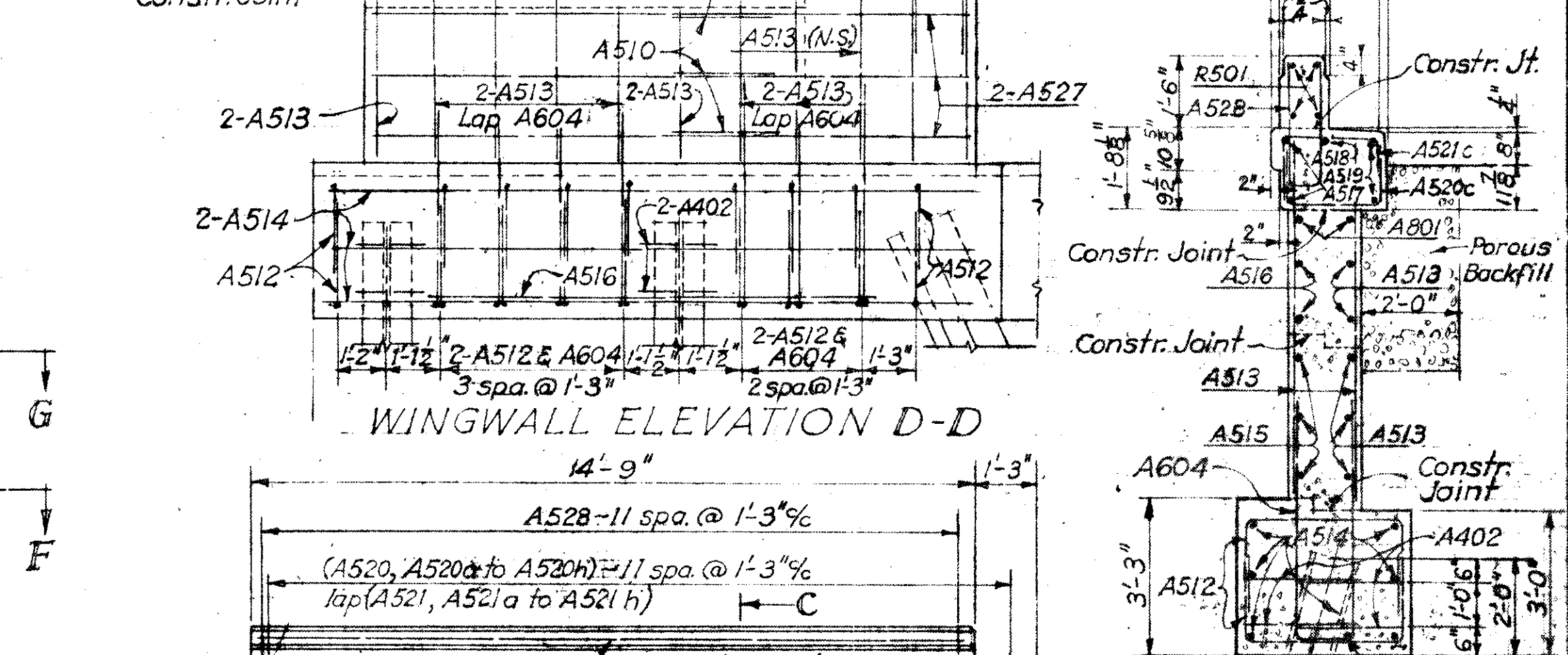
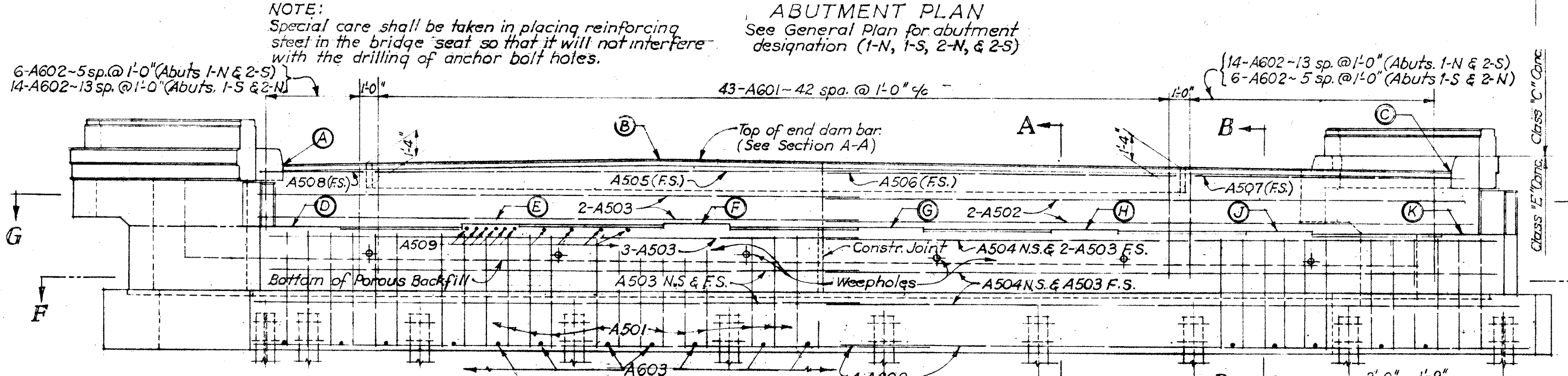
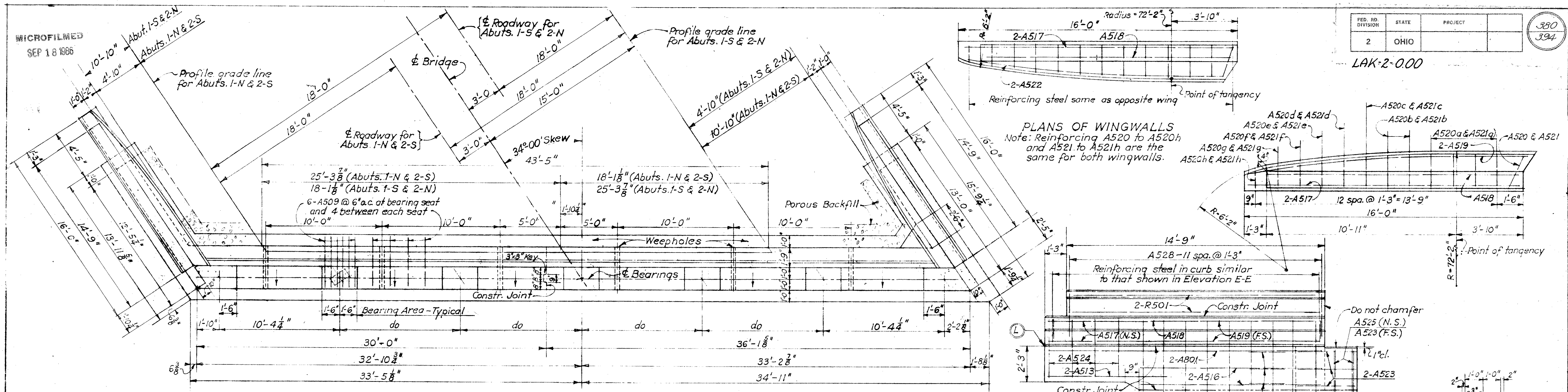


TABLE OF ELEVATIONS

LOCATION	A	B	C	D	E	F	G	H	J	K	L	M
Abut. No. 1-S	648.45	649.18	648.99	645.04	645.22	645.40	645.58	645.75	645.67	645.58	647.48	648.07
Abut. No. 2-S	649.67	649.89	649.26	646.25	646.36	646.46	646.31	646.15	646.00	645.84	648.90	648.49
Abut. No. 1-N	649.11	649.45	649.03	645.70	645.87	646.03	645.93	645.83	645.72	645.62	648.17	648.12
Abut. No. 2-N	649.52	650.01	649.72	646.10	646.22	646.35	646.47	646.59	646.45	646.30	648.72	648.93

STATE OF OHIO  
DEPARTMENT OF HIGHWAYS  
DIVISION OF DESIGN AND CONSTRUCTION  
BUREAU OF BRIDGES

ABUTMENT DETAILS  
BRIDGE No. LAK-2-0363 L&R  
OVER BEIDLER ROAD  
LAKE COUNTY STA. 291 + 88.11  
293 + 25.53

DESIGNED	DRAWN	TRACED	CHECKED	REVIEWED	DATE	REVISED
J.V.G.	J.V.G.		F.B.L.	B.F.G.	11-28-58	