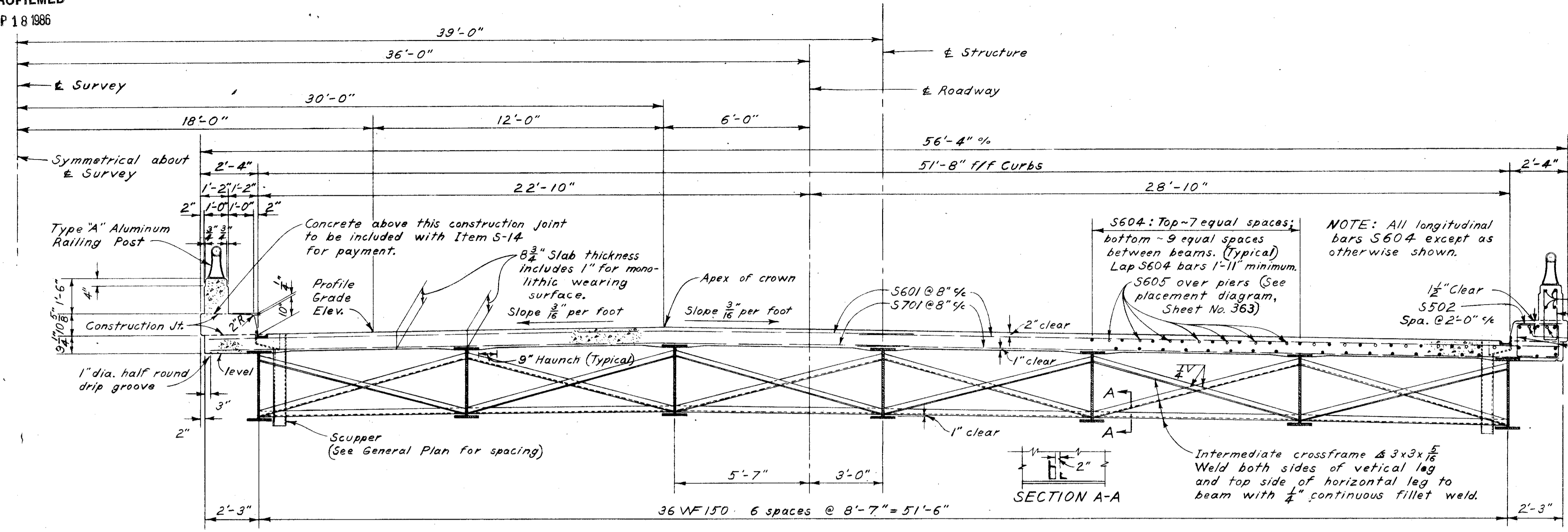


LAK-2-0.00



TRANSVERSE HALF SECTION
Eastbound Bridge Shown

NOTE: Curb and parapet dimensions and reinforcing are the same for both sides of bridge.

R502 for end panels; R501 for intermediate panels.
S503: 6 spaces @ 2'-0" in end panels; 7 spaces @ 2'-1" in intermediate panels.

NOTE: All longitudinal bars S604 except as otherwise shown.

S604: Top ~ 7 equal spaces; bottom ~ 9 equal spaces between beams. (Typical) Lap S604 bars 1'-11" minimum.

S605 over piers (See placement diagram, Sheet No. 363)

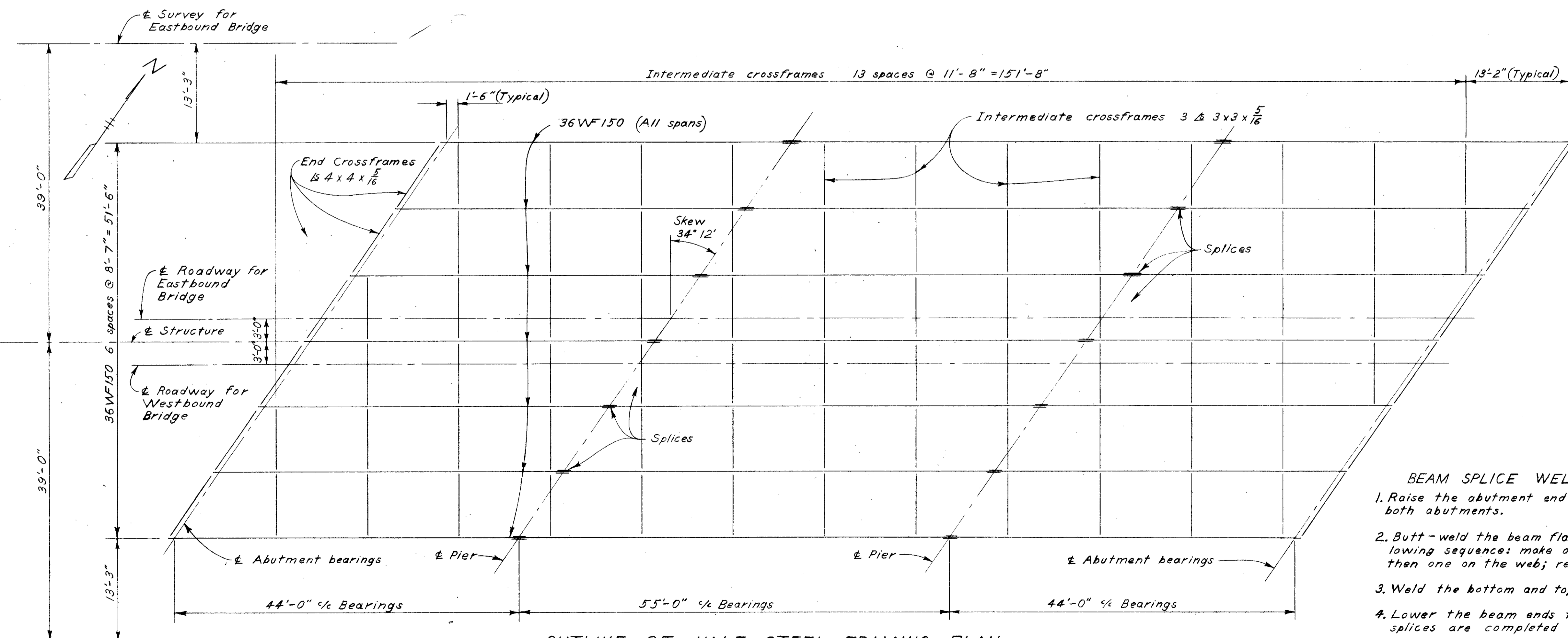
1/2" Clear S502 Spa. @ 2'-0" %

NOTE: Care shall be taken in placing the S503 bars so that they clear the face of the concrete in the parapet expansion joints by 2".

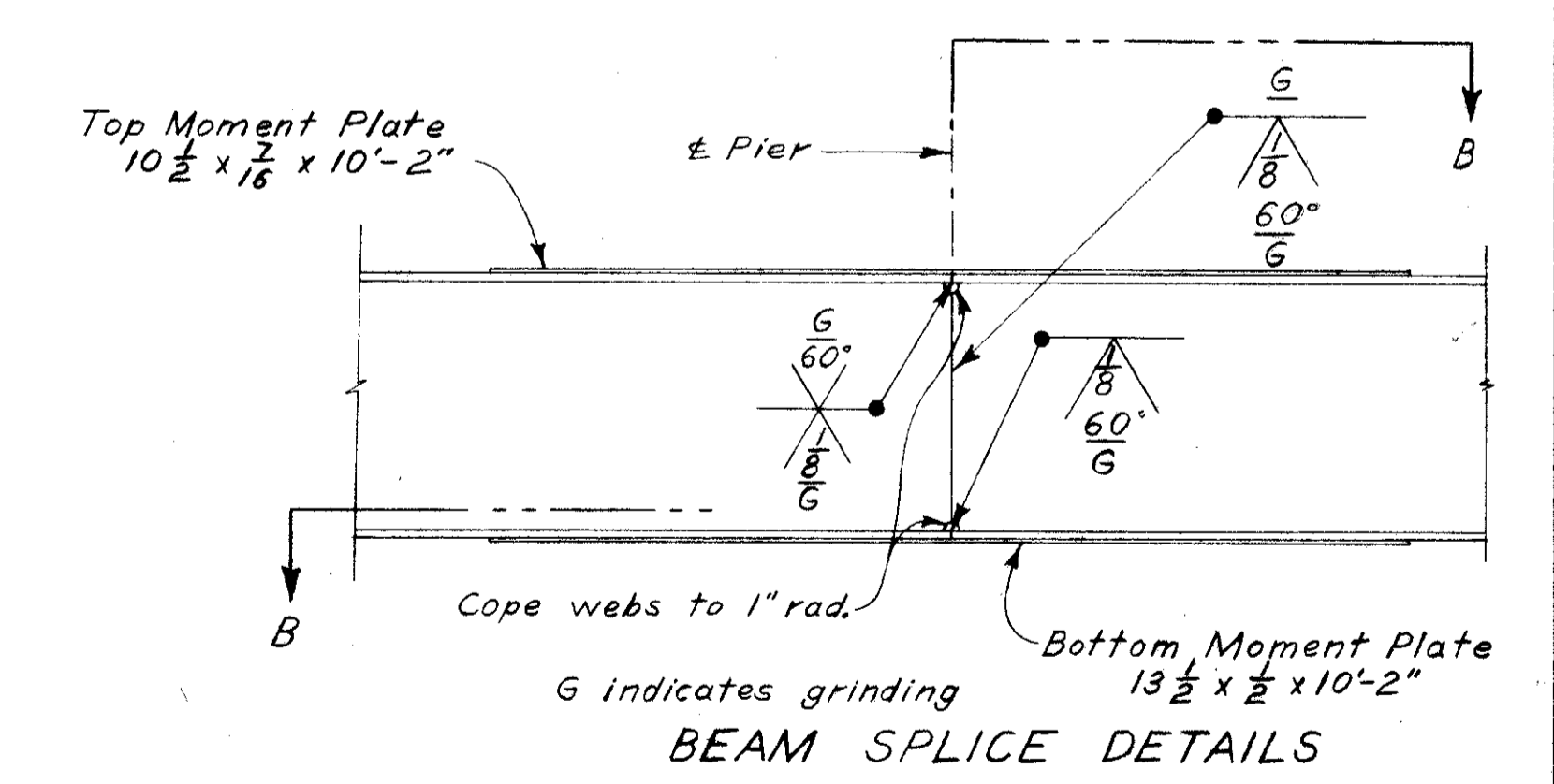
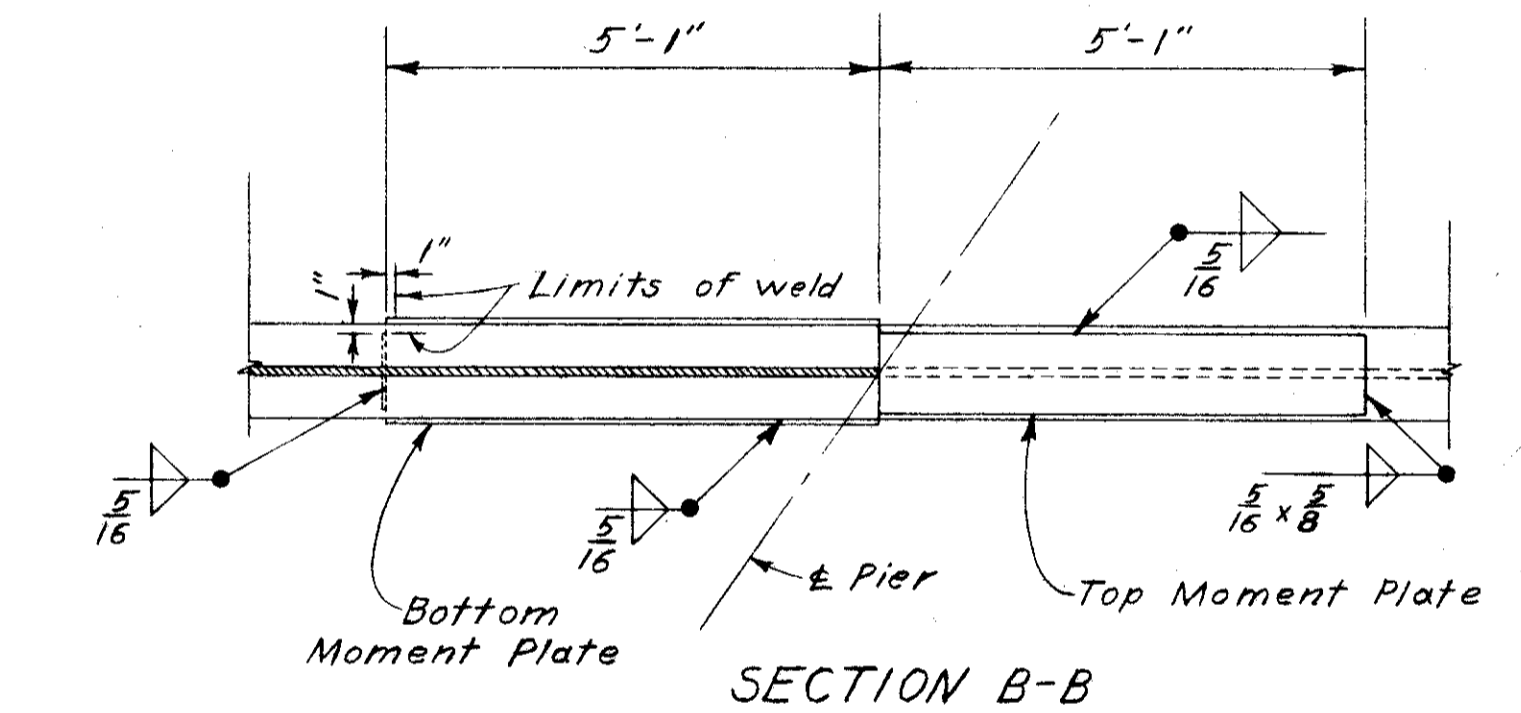
DEFLECTION of beams due to dead load is 1/8" in the end spans, and 1/16" in the middle span.

CAMBERING of beams is not required.

CONCRETE shall be Class "C"



OUTLINE OF HALF STEEL FRAMING PLAN



- BEAM SPLICE WELDING PROCEDURE**
1. Raise the abutment end of the beams 1/2" at both abutments.
 2. Butt-weld the beam flanges and web, using the following sequence: make one pass on each flange, then one on the web; repeat until welds are completed.
 3. Weld the bottom and top moment plates.
 4. Lower the beam ends to final position after the splices are completed at both piers.

STATE OF OHIO
DEPARTMENT OF HIGHWAYS
DIVISION OF DESIGN AND CONSTRUCTION
BUREAU OF BRIDGES

SUPERSTRUCTURE DETAILS
BRIDGE No. LAK-2-0255 L&R
OVER CAMPBELL ROAD
LAKE COUNTY
Sta. 234+69.16
Sta. 236+17.60

DESIGNED	DRAWN	TRACED	CHECKED	REVIEWED	DATE	REVISED
FFE	FFE			NJB	9/7	11-28-58